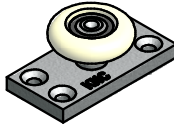
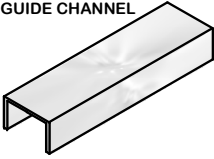


# C-915/C-916 GUIDE SYSTEM INSTRUCTION SHEET



## PARTS LIST

C-916 GUIDE CHANNEL



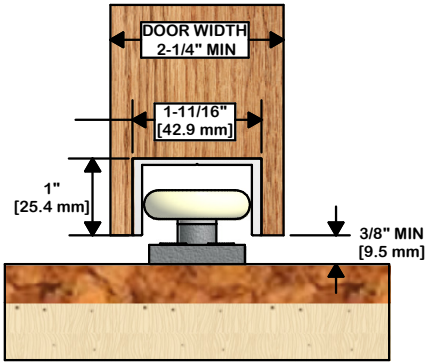
C-915 BALL BEARING ROLLER GUIDE



#10 X 1-1/2" FLATHEAD SCREWS (4 PER C-913)

### OPTION 1:

GUIDE CHANNEL IN DOOR  
WITH GUIDE ON FLOOR



### STEP 1

CUT C-916 ALUMINUM GUIDE CHANNEL TO CORRECT LENGTH IF REQUIRED (TYPICALLY, LENGTH EQUALS DOOR WIDTH. EXAMPLE: DOOR WIDTH IS 36" THEREFORE CHANNEL IS 36".)

### STEP 2

PREPARE SLOT IN DOOR AT LEAST 1-11/16" [42.9 mm] WIDE IN CENTER OF DOOR, AND AT LEAST 1" [25.4 mm] DEEP. IT IS RECOMMENDED TO MAKE THE SLOT AS ACCURATE AS POSSIBLE FOR SECURE FIT AND NEAT APPEARANCE.

### STEP 3

DRILL HOLES IN C-916 CHANNEL, AND PRE-DRILL HOLES IN DOOR. SCREW CHANNEL INTO PLACE WHILE KEEPING IT FLUSH WITH THE EDGE OF THE DOOR. (#8 SCREW SIZE RECOMMENDED)

### STEP 4

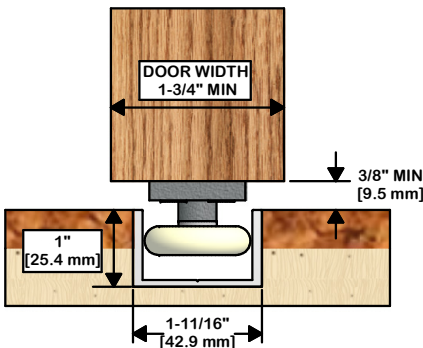
LOCATE C-915 ROLLER GUIDE AS REQUIRED AND SECURE TO FLOOR WITH #10 X 1-1/2" FLATHEAD SCREWS (4).

### STEP 5

CONTINUE WITH PROJECT BY INSTALLING HANGERS AND PLACING DOOR IN POSITION.

### OPTION 2:

GUIDE CHANNEL IN FLOOR  
WITH GUIDE ON DOOR



### STEP 1

CUT C-916 ALUMINUM GUIDE CHANNEL TO CORRECT LENGTH IF REQUIRED.

### STEP 2

PREPARE SLOT IN FLOOR SAME SIZE AS INDICATED ABOVE IN STEP 2. GUIDE CHANNEL SHOULD BE FLUSH WITH FINISHED FLOOR.

### STEP 3

DRILL HOLES IN C-916 CHANNEL, AND PRE-DRILL HOLES IN FLOOR. SCREW CHANNEL INTO PLACE. (#8 SCREW SIZE RECOMMENDED)

### STEP 4

LOCATE C-915 ROLLER GUIDE 1" FROM EACH EDGE OF DOOR. SECURE TO DOOR WITH #10 X 1-1/2" FLATHEAD SCREWS (4).

### STEP 5

CONTINUE WITH PROJECT BY INSTALLING HANGERS AND PLACING DOOR IN POSITION.



**K.N. CROWDER MFG. INC.**

1220 BURLOAK DRIVE  
BURLINGTON, ONTARIO, CANADA, L7L 6B3  
TELEPHONE: 905-315-9788 - FAX: 905-315-8090  
TOLL FREE FAX: 1-800-567-0123

**K.N. CROWDER INC.**

210 EIGHTH STREET SOUTH  
LEWISTON, NEW YORK, U.S.A. 14092  
TELEPHONE: 1-716-754-8247  
TOLL FREE FAX: 1-800-567-0123

WEBSITE: [www.kncrowder.com](http://www.kncrowder.com) -- E-MAIL: [customerservice@kncrowder.com](mailto:customerservice@kncrowder.com)