

CRT-101 TOP MOUNT HANGER SLIDING DOOR KIT INSTRUCTION SHEET FOR 1-3/8" TO 2-1/4" DOORS



PARTS LIST (FOR 1 DOOR KIT)

| | | | | |
|--|---|--|---|--------------------------------------|
| CRT-101 HANGER S/S (2) | CRT-110 SHOCK ABSORBING STOP S/S (2) | CRT-111-WB WALL MOUNT BRACKET S/S (2) * | #10 X 2" PHILLIPS FLAT HEAD S/S WOOD SCREW (8) | #10 X 1-1/2" FLATHEAD SCREWS (4) |
| CRT-100 ANTI-LIFT S/S (2) | 5/16"-18 EXPANSION SHIELD (2) * | C-913 FLOOR GUIDE (1) | C-914 GUIDE CHANNEL (1 X DOOR WIDTH) | |
| CRT-100 SOLID S/S ROUND BAR TRACK (1 X KIT LENGTH) | 5/16"-18 X 3/4" LOW PROFILE HEAD S/S SOCKET CAP SCREW (2) | 5/16"-18 X 2-1/2" S/S SOCKET CAP SCREW (2) * | SPECIFICATIONS: -LOAD CAPACITY: 300 LBS PER DOOR. -FOR SURFACE MOUNT/BARN STYLE APPLICATIONS. -HEAVY-DUTY PRECISION BALL BEARING WITH DELRIN WHEEL. (1 PER HANGER) -NO HEIGHT ADJUSTMENT AVAILABLE ON HANGER -IDEAL FOR SOLID CORE DOORS 1-3/8" TO 2-1/4" THICK | |

LEGEND
S/S - STAINLESS STEEL
* - QUANTITY IS BASED ON KIT SIZE

- 72" KIT INCLUDES 5 SETS (SPACING: 8"[203.2] -14"[355.6] X 4 -8"[203.2])
- 84" KIT INCLUDES 6 SETS (SPACING: 7"[177.8] -14"[355.6] X 5 -7"[177.8])
- 96" KIT INCLUDES 6 SETS (SPACING: 8"[203.2] -16"[406.4] X 5 -8"[203.2])
- 108" KIT INCLUDES 7 SETS (SPACING: 6"[152.4] -16"[406.4] X 6 -6"[152.4])
- 120" KIT INCLUDES 8 SETS (SPACING: 7.5"[190.5] -15"[381] X 7 -7.5"[190.5])
- 144" KIT INCLUDES 9 SETS (SPACING: 8"[203.2] -16"[406.4] X 8 -8"[203.2])

INSTALLATION INSTRUCTIONS

STEP 1

DETERMINE OPENING SIZE, DOOR SIZE & WALL HEIGHT BASED ON DIMENSIONS SHOWN IN DETAIL VIEWS AND CLEARANCE REQUIRED BELOW DOOR. TRACK SHOULD BE AT LEAST TWO TIMES DOOR WIDTH. EXAMPLE: 36" DOOR REQUIRES 72" TRACK. TRACK LENGTHS ARE ONLY AVAILABLE IN PER FOOT INCREMENTS. CRT SERIES TRACK MUST BE INSTALLED ONTO SOLID BACKING/SUPPORT (IN WALL).

STEP 2

ONCE DOOR SIZE HAS BEEN DETERMINED, CALCULATE THE DISTANCE FROM THE FINISHED FLOOR TO THE CENTER OF THE TRACK WITH THE FOLLOWING FORMULA: **(NOTE: MINIMUM GROUND CLEARANCE IS 3/8" [9.5 mm], 1/2" [12.7 mm] IS USED FOR CALCULATION EXAMPLE)** DOOR HEIGHT (A) + 2" [50.8 mm] + MINIMUM 1/2" [12.7 mm] GROUND CLEARANCE (B) = DISTANCE TO CENTER OF TRACK. EXAMPLE FOR 84" [2134 mm] DOOR: 84" [2134 mm] (A) + 2" [50.8 mm] + 1/2" [12.7 mm] = 86-1/2" [2197 mm] FROM FINISHED FLOOR TO CENTER OF TRACK.

STEP 3

MARK A HORIZONTAL LINE WITH A LEVEL ON WALL AT THE MEASUREMENT CALCULATED IN STEP 2. LOCATE TRACK ON WALL AND MARK HOLE LOCATIONS AS PER SPACING SHOWN IN THE LEGEND OR WITH TRACK. DRILL 5/8" HOLE AT LEAST 2" DEEP AT THE LOCATIONS MARKED.

STEP 4

INSERT ONE 5/16"-18 EXPANSION SHIELD (SUPPLIED) INTO EACH HOLE.
NOTE: INSERT WITH THREADED END INTO THE HOLE FIRST.

STEP 5

INSERT ONE CRT-111-WB (WALL BRACKET) INTO EACH HOLE ON THE BACK OF THE TRACK (LARGE HOLE ON TRACK IS THE BACK SIDE) WHILE PUTTING ONE 5/16"-18 X 2-1/2" S/S SOCKET CAP SCREW THROUGH THE FRONT HOLE.

STEP 6

LIFT TRACK UP TO WALL AND LOOSELY SCREW THE SOCKET CAP SCREWS INTO THE EXPANSION SHIELDS PLACED IN STEP 4. SECURE TRACK TO WALL BY TIGHTENING SOCKET CAP SCREWS. ENSURE THAT EXPANSION SHIELDS HAVE BEEN FULLY SEATED.

STEP 7

PREPARE BOTTOM OF DOOR & INSTALL C-914 GUIDE CHANNEL. SEE OPTION #1 ON THE C-913/C-914 INSTRUCTION SHEET FOR MORE DETAILS.

STEP 8

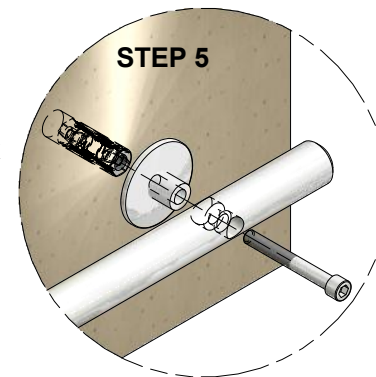
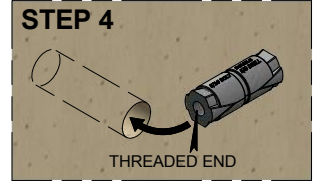
LOCATE & INSTALL CRT-101 TOP MOUNT HANGERS ON DOOR MINIMUM 5" FROM CENTER OF HANGER TO EDGES OF DOOR WITH FOUR #10 X 2" S/S FLATHEAD SCREWS (PER HANGER).

STEP 9

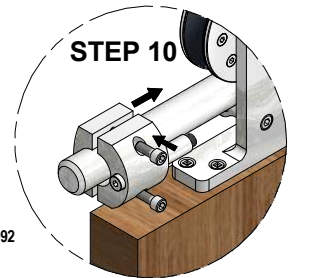
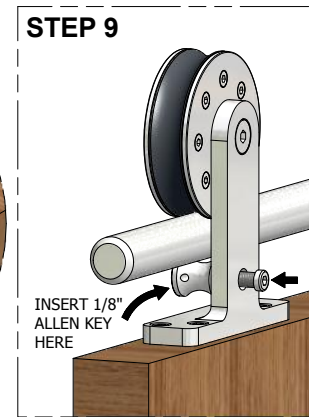
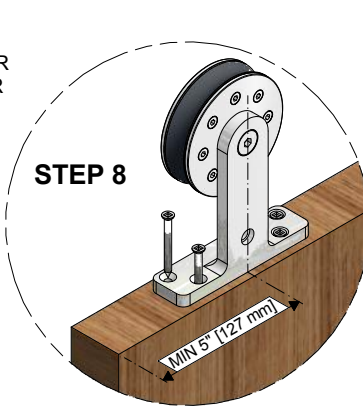
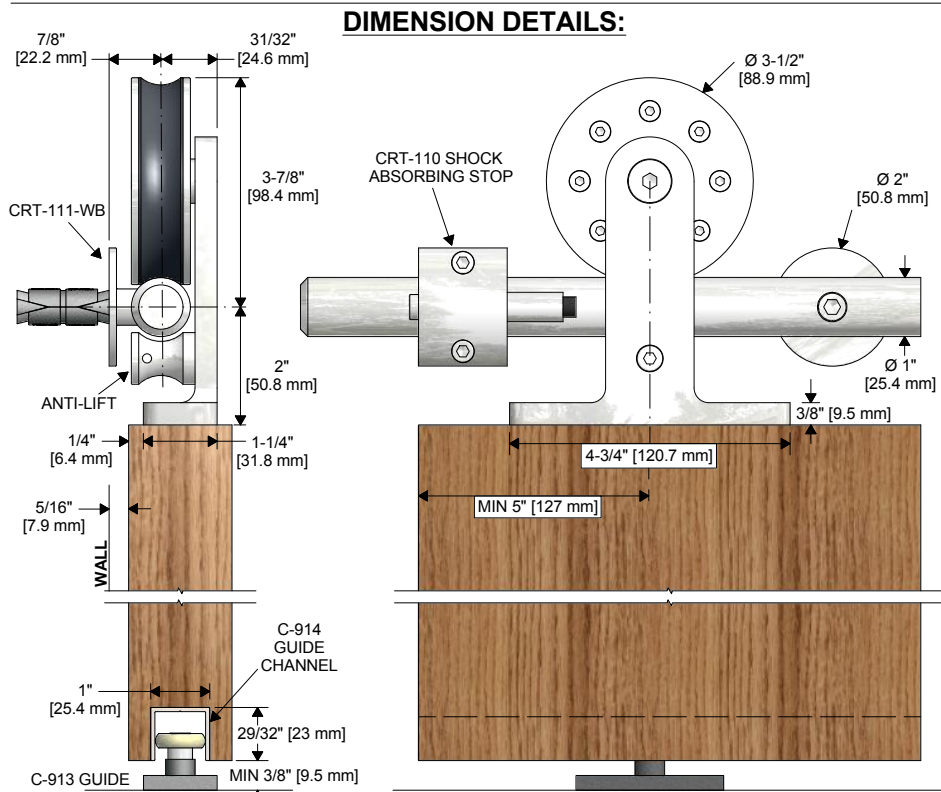
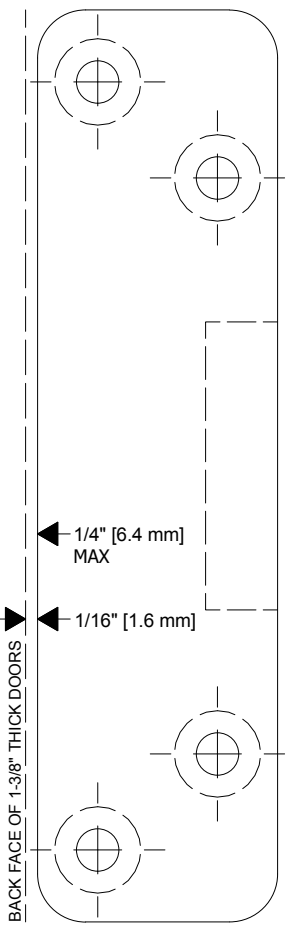
PLACE DOOR ONTO TRACK. THE DELRIN WHEEL SHOULD BE RESTING ON THE TOP OF THE ROUND BAR TRACK. INSTALL CRT-100 ANTI-LIFT ONTO CRT-101 HANGER WITH THE SUPPLIED 5/16"-18 X 3/4" LOW PROFILE HEAD S/S SOCKET CAP SCREW WITH LOCTITE. **NOTE: THE "CRT-100 ANTI-LIFT" COMPONENT MUST BE INSTALLED AS THIS WILL PREVENT THE DOOR FROM LIFTING OFF THE TRACK. USE AN ALLEN KEY TO HOLD THE ANTI-LIFT (HOLE IN ANTI-LIFT) WHILE TIGHTENING THE SOCKET CAP SCREW.**

STEP 10

INSTALL CRT-110 SHOCK ABSORBING STOPS FROM THE END OF THE TRACK. LOOSEN THE CAP SCREWS HOLDING THE CLAMP TOGETHER TO ALLOW YOU TO SLIDE IT ONTO THE TRACK FROM THE ENDS. THE STOPS ARE REVERSIBLE. LOCATE THE STOPS AS REQUIRED TO LIMIT THE SLIDING DISTANCE OF THE DOOR AND SECURE THE STOP CLAMP TO THE TRACK WITH THE TWO CAPS SCREWS. **NOTE: THE "CRT-110 STOPS" MUST BE INSTALLED AS THIS WILL PREVENT THE DOOR FROM RUNNING OFF THE TRACK AND PROVIDE THE REQUIRED STOPPING FORCE FOR THE DOOR(S).**



CRT-101 TOP MOUNT HANGER SCREW HOLE LOCATION TEMPLATE



K.N. CROWDER MFG. INC.
1220 BURLOAK DRIVE
BURLINGTON, ONTARIO, CANADA, L7L 6B3
TELEPHONE: 905-315-9788 - FAX: 905-315-8090
TOLL FREE FAX: 1-800-567-0123
WEBSITE: www.kncrowder.com -- E-MAIL: customerservice@kncrowder.com

K.N. CROWDER INC.
210 EIGHTH STREET SOUTH
LEWISTON, NEW YORK, U.S.A. 14092
TELEPHONE: 1-716-754-8247
TOLL FREE FAX: 1-800-567-0123

BACK FACE OF 1-3/4" OR THICKER DOORS
BACK FACE OF 1-3/8" THICK DOORS