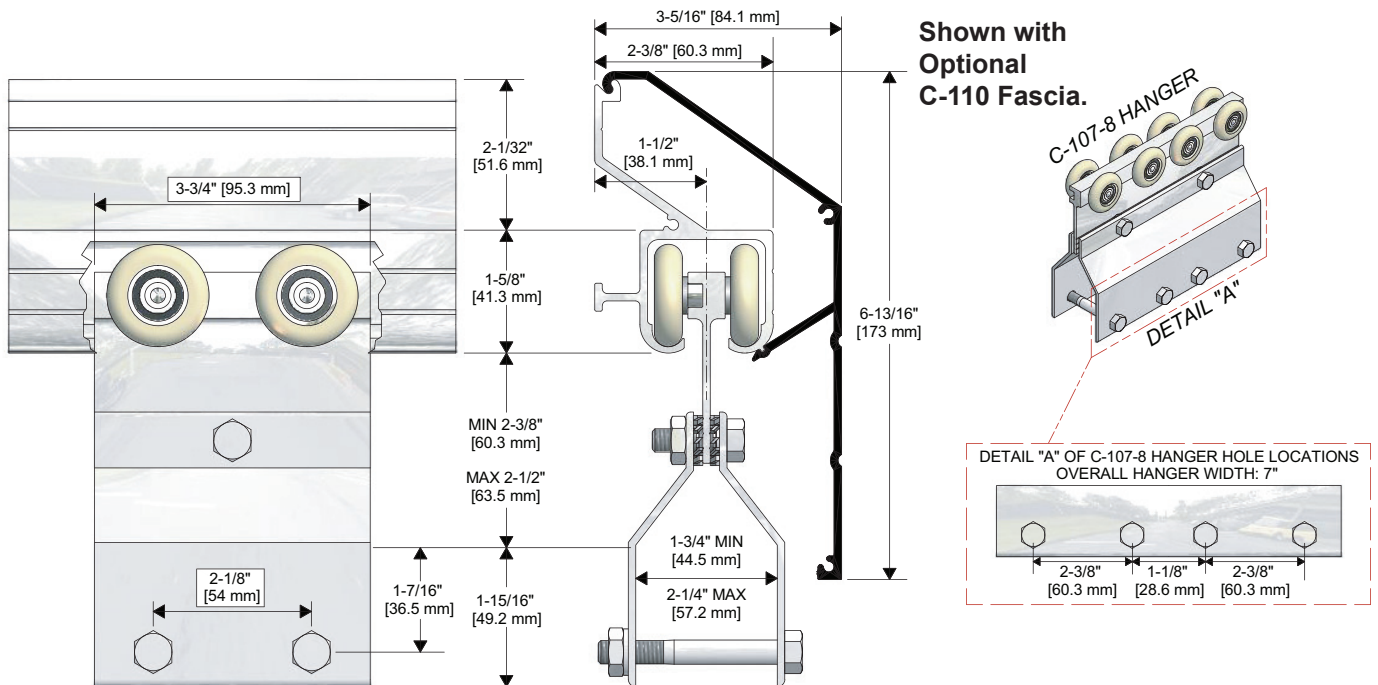


## C-107-4-108 OR C-107-8-108



### KEY FEATURES:

- Heavy-duty clamp type face mounting hangers for Single or Bi-parting Wall Mounted doors.
- **C-107-4** Hangers c/w Four Precision Ground Ball Bearing, Nylon Tire Wheels.
- Load Capacity **350lbs. (two hangers)**
- **C-107-8** Hangers c/w Eight Precision Ground Ball Bearing, Nylon Tire Wheels.
- Load Capacity **500lbs. (two hangers)**
- Use with Extruded Aluminum **C-108** Side Mount Track, 6063T5 Alloy
- Optional Extruded Aluminum **C-110** Snap-on Fascia used to cover hardware (Kit No. **C-107-4(8)-110**)



<b>Part Number:</b>	<b>Part Description:</b>		
<b>Customer Name:</b>	<b>Job Number/Name:</b>	<b>Date:</b>	<b>Provided By:</b>
<b>Notes:</b>			