

MEDIUM TO HEAVY-DUTY TOP MOUNT SYSTEMS



CC-810 Zero Clearance Hanger

With CC-904 Top Mount Track

For Single or Bi-Parting, By-Passing, Pocket or Wall Mounted Doors.

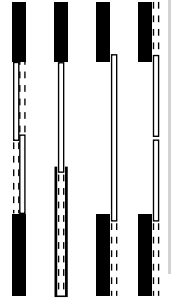
Using the popular design from the standard C-810 Zero Clearance Hangers, our well-known precision ball bearing nylon tire wheels, and adding Catch'N'Close technology, results in the ultimate sliding door system! The CC-810 Hanger allows for a minimal clearance of 3/16" [4.8mm] between the door and underside of track which also reduces light and sound entry. Using the new CC-904 Track, combined with the CC-940 Fascia can result in significant savings by eliminating the need for constructing a bulkhead to hide the track & hardware.

- **CC-810** Hanger Load Capacity **300 lbs. (two Hangers)**
- Use with Extruded Aluminum **CC-904 Track**, 6061T6 Alloy
- Use with **CC-2** Catch'N'Close closing device for up to **200lbs. doors**
- Use with **CC-3** Catch'N'Close closing device for up to **300lbs. doors**

Up to
300lbs.
per door

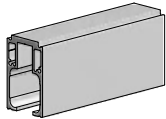


CC-904

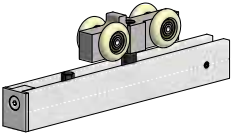


CC-?-810 X (track size)" 1DR KIT COMPLETE

Complete Kits available for 24" [610 mm] to 72" [1829 mm] wide doors.



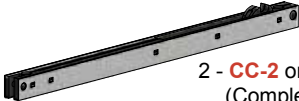
- 1 - **CC-904** Top Mount Track X Length (2 x Door Width)
(Example: 36" [914mm] Door = 72" [1829mm] Track)



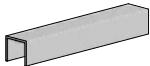
- 2 - **CC-810** Zero Clearance Catch'N'Close Hangers
(Complete with screws & adjustment tools)



- 2 - **CC-101HD** Catch'N'Close In-track Stops
(Complete with set screws for friction fit)



- 2 - **CC-2** or **CC-3** Catch'N'Close closing device
(Complete with screws. See above for weight capacity)



- 1 - **C-914** Guide Channel X Length (equal to Door Width)
(Example: 36" [914mm] Door = 36" [914mm] Guide Channel)



- 1 - **C-913** Floor Guide
(Complete with screws)

OPTIONAL PRODUCTS



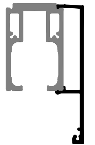
FOR:



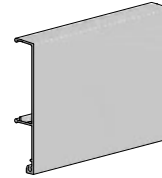
- CC-941** End Cap only
(For use with CC-904 Track only)



FOR:



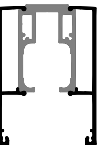
- CC-942** End Cap only
(For use with CC-904 Track & **one (1)** CC-940 Fascia combination only)



CC-940 Snap-On Fascia



FOR:



- CC-943** End Cap only
(For use with CC-904 Track & **two (2)** CC-940 Fascia combination only)

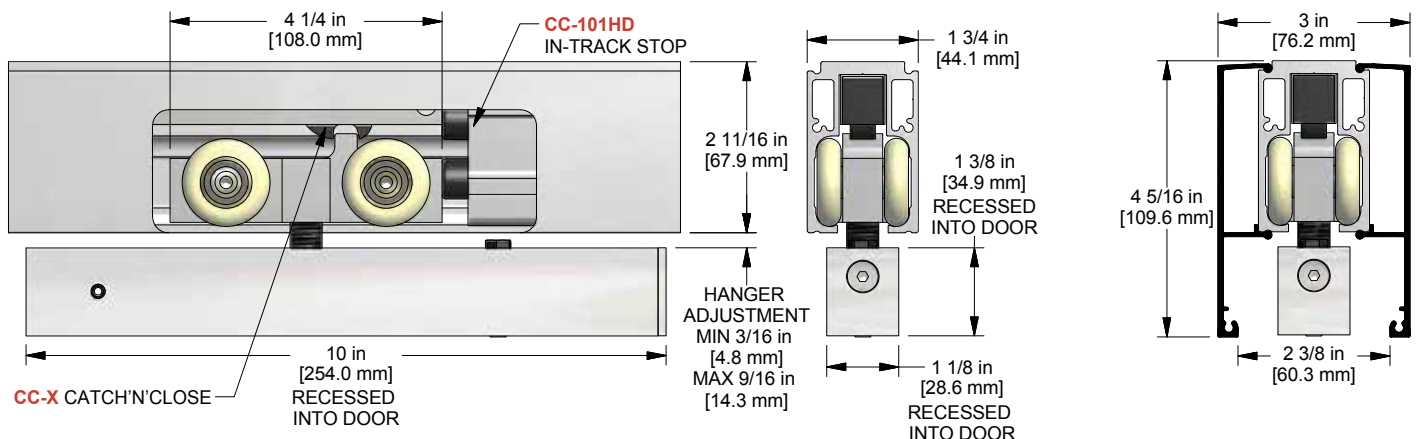


For **Door Locks & Pulls**, see pages 72-75 in the K.N. Crowder Sliding Door Track & Hardware Catalogue



C-102HD Floor Stop

CC-810 HANGER WITH CC-904 TRACK DETAIL



[Optional **CC-940** Snap-On Fascia illustrated as solid **black** profile. Can be used on both sides of the track or one side only]