

CFT-200 SERIES

FLAT BAR TRACK SERIES

new

Architecture & Design Collection

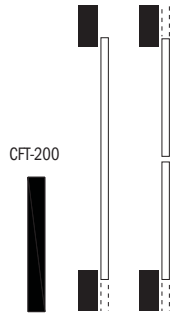


CFT-201 HANGER TOP MOUNT FOR WOOD DOORS

NEW Crowdertrack Flat Bar Track (CFT) series starts with our Basic Top Mount Hanger for wood doors. Mimicking the traditional flat track system used in barns, of steel rollers on a steel bar, this series is ideal for industrial style barn doors. The CFT series is available in 304 Stainless Steel polished to satin finish, and steel with Black Finish. Other finishes available upon request.

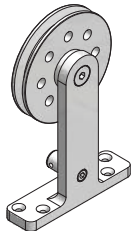
- **CFT-200-SS Track** Polished 304 **Satin Stainless Steel 1/4" [6.4mm] x 2" [50.8mm] Solid Flat Bar** weighing 1.720 lbs. per foot.
- **CFT-200-BP Track** Black Finish **Cold Rolled Steel 1/4" [6.4mm] x 2" [50.8mm] Solid Flat Bar** weighing 1.700 lbs. per foot.
- Load Capacity **300 lbs. (two hangers)**
- Load Capacity **450 lbs. (three hangers)**
- Load Capacity **600 lbs. (four hangers)**

Up to **300 lbs.** per door



CFT-201 COMPLETE KIT FOR ONE DOOR

2 - CFT-201 top mount hangers complete with anti-lift and screws.



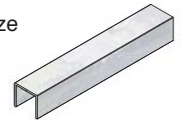
CFT-211-WB wall mount brackets for flat bar track (quantity is based on kit size). Complete with 5/16"-18 flat head socket screws and expansion shields.



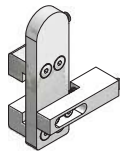
1 - CFT-200 (2" [50.8mm] x 1/4" [6.4mm] Flat bar track) X length based on kit size (eg. 72" [1829mm]) Kit for 36" [914mm] wide door



1 - C-914 aluminum guide channel x length based on kit size (eg. 72" [1829mm]) Kit = 36" [914mm] long guide channel



2 - CFT-210 shock absorbing stops (clamps around 2" [50.8mm] x 1/4" [6.4mm] flat bar)



1 - C-913 floor guide complete with screws



CFT-201 HANGER WITH CFT-200 TRACK DETAIL

