

SINGLE TRACK SYSTEMS

HEAVY-DUTY

C-206-4 HANGER

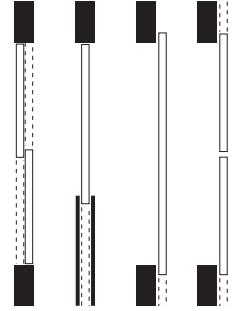
C-204 TRACK

For Single & Bi-Parting, By-Passing, Pocket or Wall Mounted Doors

Top mount only. Four Precision Ball Bearings, Steel wheels. Locknuts hold vertical adjustment. Suitable for all types of heavy sliding doors.

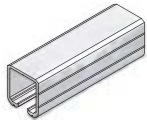
- Use with Extruded Aluminum **C-204 Track**, 6061T6 Alloy
- Load Capacity **225 lbs. (two hangers)**

Up to 225 lbs per door



C-206-4 COMPLETE KIT FOR 1 DOOR

COMPLETE KITS AVAILABLE FOR 24" [610MM] TO 72" [1829MM] WIDE DOORS. FOR BY-PASSING DOOR APPLICATIONS USE TWO COMPLETE KITS.



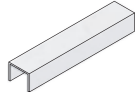
1 - C-204 TRACK LENGTH: 2 X DOOR WIDTH (EXAMPLE: 36" [914MM] DOOR = 72" [1829MM] TRACK)



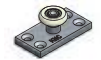
2 - C-206-4 HANGERS COMPLETE WITH SCREWS



2 - C-100HD IN-TRACK STOP COMPLETE WITH SCREWS

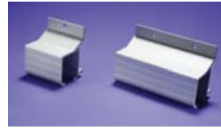


1 - C-914 GUIDE CHANNEL LENGTH: EQUAL TO DOOR WIDTH (EXAMPLE: 36" [914MM] DOOR = 36" [914MM] GUIDE CHANNEL)



1 - C-913 FLOOR GUIDE COMPLETE WITH SCREWS

OPTIONAL PRODUCTS



C-205 Side-Mount Bracket/C-203 Side Mount Joiner. (See page 68 for more details).



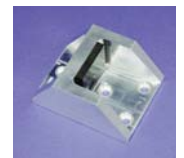
C-90 Door Locks & Pulls Series. (See pages 72-75 for more details).



C-80 Door Locks & Pulls Series. (See pages 72-75 for more details).



CAS-1 or CAS-2 Stops. (See page 69 for more details).



C-102HD Floor Stop. (See page 69 for more details).



Optional Fascias. (See page 67 for more details).

C-206-4 HANGER WITH C-204 TRACK DETAIL

