

SINGLE TRACK SYSTEMS

MEDIUM TO HEAVY-DUTY

new

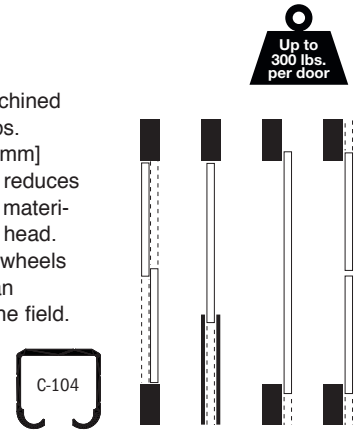
C-810 ZERO CLEARANCE HANGER C-104 TRACK



For Single & Bi-Parting, By-Passing, Pocket or Wall Mounted Doors

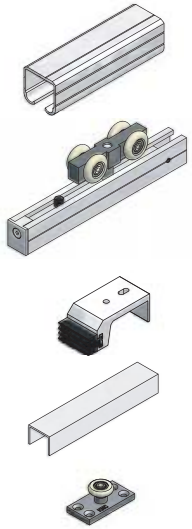
ZERO CLEARANCE HANGER carriage assembly is machined steel allowing a load capacity for heavy doors up to 300lbs. This system allows for a minimal clearance of 3/16" [4.8mm] between the door and underside of the track which also reduces light and sound entry. It will also allow minimal costs on materials and time when hiding the track and hanger in a bulk head. Constructed using four precision ball bearing, nylon tire wheels on a solid, machined steel body, comes complete with an adjusting wrench and Allen key for easy adjustment in the field.

- Use with Extruded Aluminum **C-104 Track**, 6063T5 Alloy
- Load Capacity **300 lbs. (two hangers)**



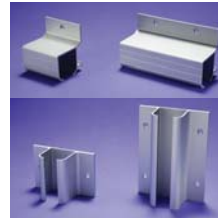
C-810 COMPLETE KIT FOR 1 DOOR

COMPLETE KITS AVAILABLE FOR 24" [610MM] TO 72" [1829MM] WIDE DOORS. FOR BY-PASSING DOOR APPLICATIONS USE TWO COMPLETE KITS.



- 1 - C-104 TRACK
LENGTH: 2 X DOOR WIDTH (EXAMPLE: 36" [914MM] DOOR = 72" [1829MM] TRACK)
- 2 - C-810 HANGERS
COMPLETE WITH SCREWS
- 2 - C-100HD IN-TRACK STOP COMPLETE WITH SCREWS
- 1 - C-914 GUIDE CHANNEL
LENGTH: EQUAL TO DOOR WIDTH (EXAMPLE: 36" [914MM] DOOR = 36" [914MM] GUIDE CHANNEL)
- 1 - C-913 FLOOR GUIDE COMPLETE WITH SCREWS

OPTIONAL PRODUCTS



C-402 Side-Mount Bracket/
C-403 Side-Mount Joiner or
C-406/C-407 Top Mount Bracket.
(See page 68 for more details).



C-90 Door Locks & Pulls
Series. (See pages
72-75 for more details).



C-80 Door Locks & Pulls
Series. (See pages
72-75 for more details).



CAS-1 or CAS-2 Stops.
(See page 69 for more details).



C-102HD Floor
Stop. (See page 69
for more details).



Optional Fascias.
(See page 67 for more details).

C-810 HANGER WITH C-104 TRACK DETAIL

