

SINGLE TRACK SYSTEMS

MEDIUM TO LIGHT DUTY (BARN STYLE)

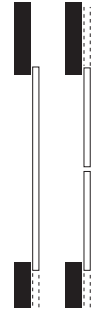
C-412 HANGER C-412 SIDE-MOUNT TRACK

Quick Release "Spinwheel" Hanger For Single or Bi-Parting Face Mounted Doors.

An essential safety feature for **Nursing Homes** and **Hospitals**. The Quick Release Hanger with four Precision ball bearing, nylon tire wheels allows for fast and easy door removal from the outside (eg: when a patient in distress in a washroom requires immediate assistance). Levelling and height adjustment can be accomplished by one person during door installation without the use of tools.

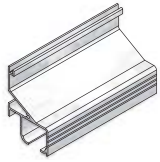
- Use with Extruded Aluminum **C-412 Track** 6063T5 Alloy
- Load Capacity **150 lbs. (two hangers)**

Up to
150 lbs.
per door

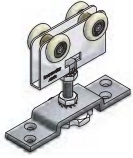


C-412 COMPLETE KIT FOR 1 DOOR

COMPLETE KITS AVAILABLE FOR 24" [610MM] TO 72" [1829MM] WIDE DOORS.



- 1 - C-412 TRACK
LENGTH: 2 X DOOR WIDTH
(EXAMPLE: 36" [914MM] DOOR =
72" [1829MM] TRACK)



- 2 - C-412 HANGERS COMPLETE WITH
SCREWS



- 2 - C-1202 FLOOR GUIDES COMPLETE
WITH SCREWS



- 2 - CDC-411 IN-TRACK STOP & CATCH
COMPLETE WITH SCREWS

OPTIONAL PRODUCTS



C-413 Fascia & C-413 End
Cap. (See page 67
for more details).



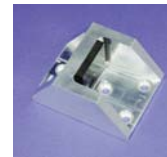
C-90 Door Locks & Pulls
Series. (See pages
72-75 for more details).



C-80 Door Locks & Pulls
Series. (See pages
72-75 for more details).



CAS-1 or CAS-2 Stops.
(See page 69 for more details).

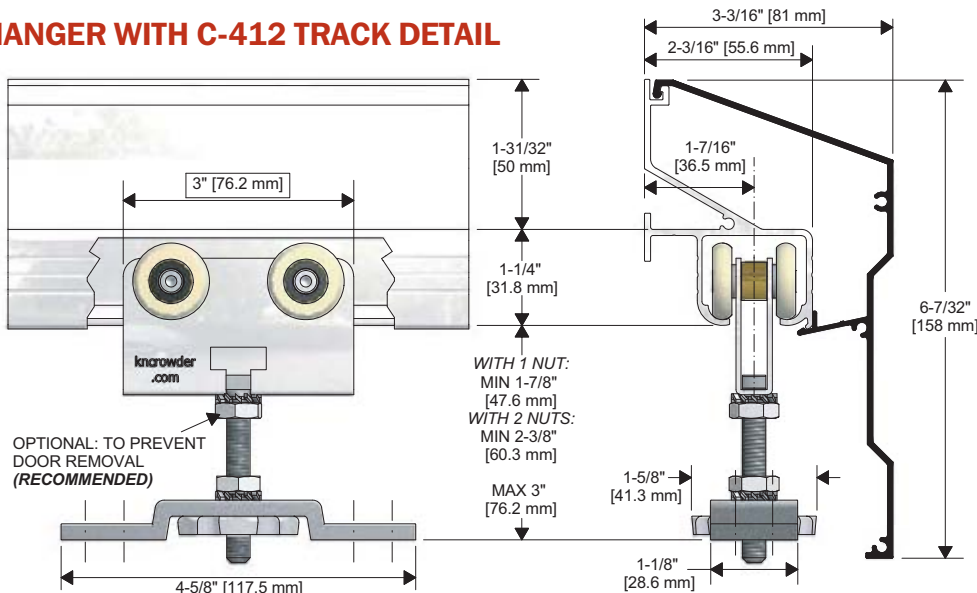


C-102HD Floor
Stop. (See page 69
for more details).



CSM-913-412 or CSM-200-412
Side-Mount Guides with C-914
or C-201 Guide Channel. (See
pages 70-71 for more details).

C-412 HANGER WITH C-412 TRACK DETAIL



SHOWN WITH C-413 FASCIA, OPTIONAL

