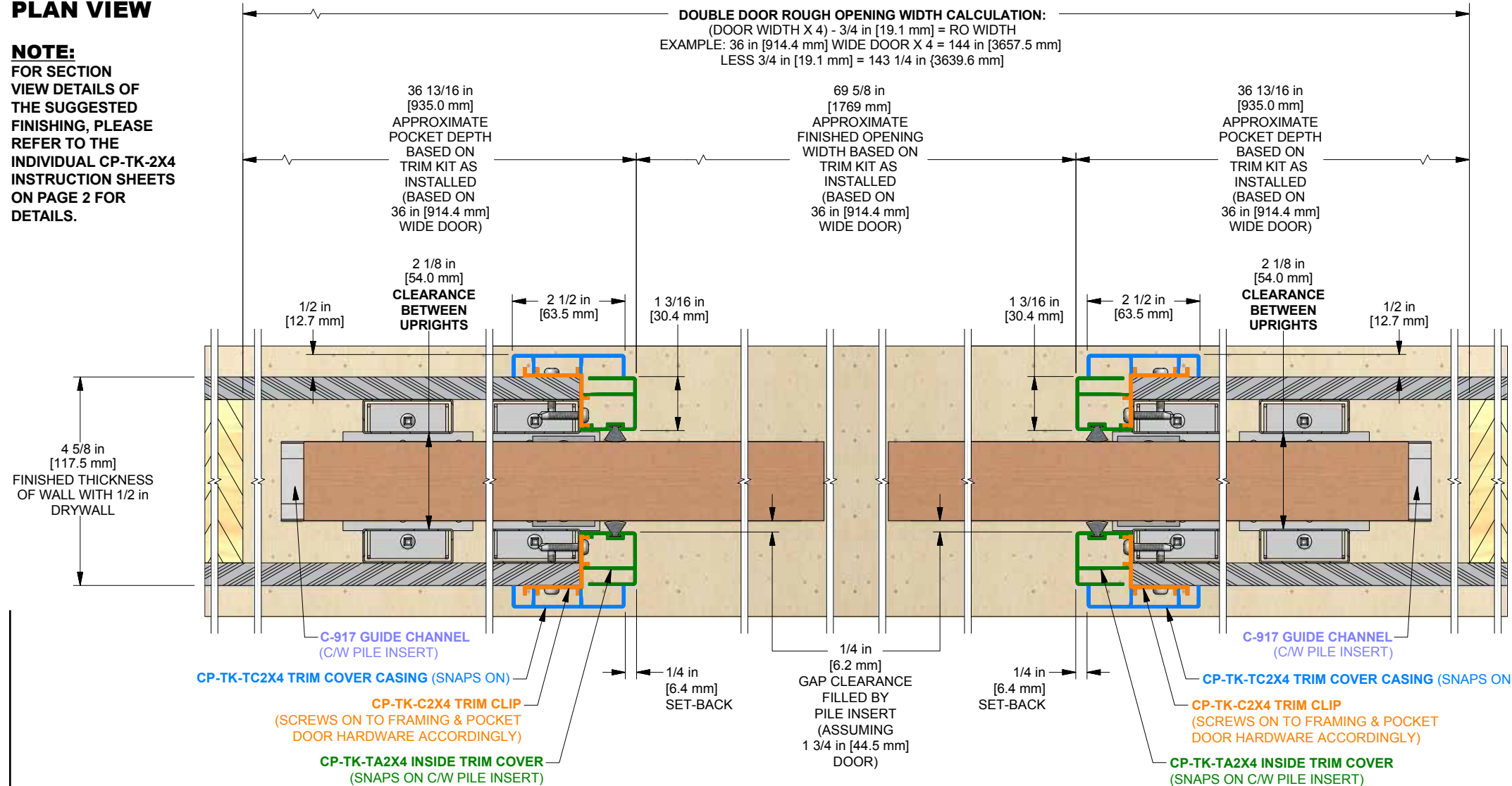


**TYPE CC-W CATCH'N'CLOSE CROWDERFRAME POCKET DOOR KIT
WITH CPD-CC-JOINER KIT & CPD-TK-2X4 DOUBLE POCKET TRIM KIT DIMENSION DETAILS (CONT'D)**

NOTE:
DIMENSION DETAILS ARE BASED ON A DOUBLE 36 in [914 mm] WIDE X 84 in [2134 mm] HIGH DOOR USING TWO TYPE CC-W CATCH'N'CLOSE CROWDERFRAME POCKET DOOR KITS WITH CPD-CC-JOINER KIT AND THE CPD-TK-2X4 DOUBLE POCKET TRIM KIT.

PLAN VIEW

NOTE:
FOR SECTION VIEW DETAILS OF THE SUGGESTED FINISHING, PLEASE REFER TO THE INDIVIDUAL CP-TK-2X4 INSTRUCTION SHEETS ON PAGE 2 FOR DETAILS.

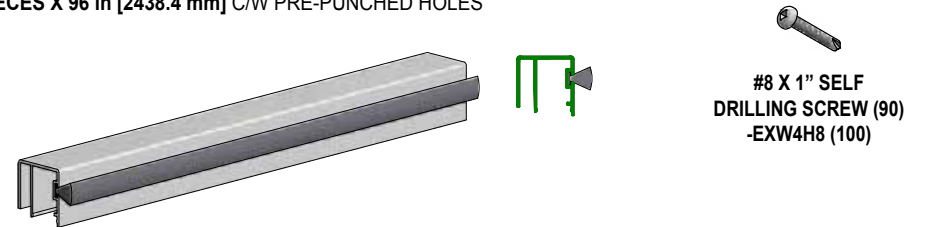


**PARTS LIST FOR CPD-TK-2X4 OR
CPD-TK-2X4-EXW4H8 DOUBLE POCKET TRIM KITS**

LEGEND:
(X) = QUANTITY OF ITEM SUPPLIED IN KITS
FOR DOORS UP TO 36 in [914 mm] WIDE X 84 in [2134 mm] OR 2150mm HIGH
-EXW4H8 (X) = QUANTITY SUPPLIED IN EXTRA WIDTH & EXTRA HEIGHT KITS FOR DOORS
FOR DOORS UP TO 48 in [1219 mm] WIDE X 96 in [2438 mm] OR 2455mm HIGH

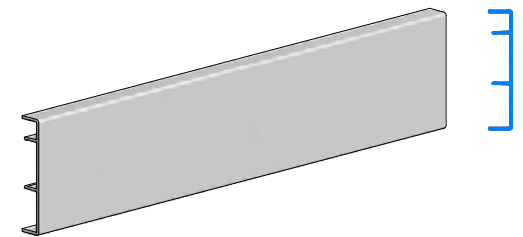


CP-TK-C2X4 CLIP X
(QUANTITY AND LENGTH OPTIONS LISTED BELOW)
FOR CPD-TK-2X4 KITS FOR 2 DOORS UP TO 36 in [914 mm] WIDE X 84 in [2134 mm] OR 2150mm HIGH:
(4) PIECES X 84 in [2133.6 mm] C/W PRE-PUNCHED HOLES
(2) PIECES X 72 in [1828.8 mm] C/W PRE-PUNCHED HOLES
FOR CPD-TK-2X4-EXW4H8 KITS FOR 2 DOORS UP TO 48 in [1219 mm] WIDE X 96 in [2438 mm] OR 2455mm HIGH:
(4) PIECES X 96 in [2438.4 mm] C/W PRE-PUNCHED HOLES
(2) PIECES X 96 in [2438.4 mm] C/W PRE-PUNCHED HOLES

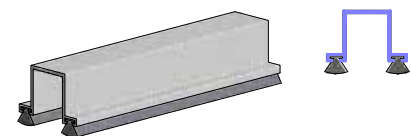


#8 X 1" SELF DRILLING SCREW (90) -EXW4H8 (100)

CP-TK-TA2X4 INSIDE TRIM COVER X
(QUANTITY AND LENGTH OPTIONS LISTED BELOW)
FOR CPD-TK-2X4 KITS FOR 2 DOORS UP TO 36 in [914 mm] WIDE X 84 in [2134 mm] OR 2150mm HIGH:
(4) PIECES X 86 in [2183.3 mm] C/W PILE INSERT
(2) PIECES X 74 in [1879.6 mm] C/W PILE INSERT
FOR CPD-TK-2X4-EXW4H8 KITS FOR 2 DOORS UP TO 48 in [1219 mm] WIDE X 96 in [2438 mm] OR 2455mm HIGH:
(4) PIECES X 98 in [2489.2 mm] C/W PILE INSERT
(2) PIECES X 98 in [2489.2 mm] C/W PILE INSERT



CP-TK-TC2X4 TRIM COVER CASING X
(QUANTITY AND LENGTH OPTIONS LISTED BELOW)
FOR CPD-TK-2X4 KITS FOR 2 DOORS UP TO 36 in [914 mm] WIDE X 84 in [2134 mm] OR 2150mm HIGH:
(4) PIECES X 88 in [2235.2 mm]
(2) PIECES X 79 in [2006.6 mm]
FOR CPD-TK-2X4-EXW4H8 KITS FOR 2 DOORS UP TO 48 in [1219 mm] WIDE X 96 in [2438 mm] OR 2455mm HIGH:
(4) PIECES X 100 in [2540.0 mm]
(2) PIECES X 103 in [2616.2 mm]



C-917 GUIDE CHANNEL X
(QUANTITY AND LENGTH OPTIONS LISTED BELOW)
FOR CPD-TK-2X4 KITS FOR 2 DOORS UP TO 36 in [914 mm] WIDE X 84 in [2134 mm] OR 2150mm HIGH:
(2) PIECES X 36 in [914.4 mm] C/W PILE INSERT
FOR CPD-TK-2X4-EXW4H8 KITS FOR 2 DOORS UP TO 48 in [1219 mm] WIDE X 96 in [2438 mm] OR 2455mm HIGH:
(2) PIECES X 48 in [1219.2 mm] C/W PILE INSERT

INSTALLATION INSTRUCTIONS FOR CPD-TK-2X4 DOUBLE POCKET TRIM KIT

STEPS #1 TO 8: FOLLOW STEPS FROM TYPE CC-W SINGLE DOOR POCKET KIT INSTRUCTION SHEETS. (SAME FOR "NR" NARROW KITS). FOLLOW THE STEPS IN THE CPD-CC-JOINER KIT INSTRUCTION SHEET FOR APPLICABLE STEPS FOR SET-UP.

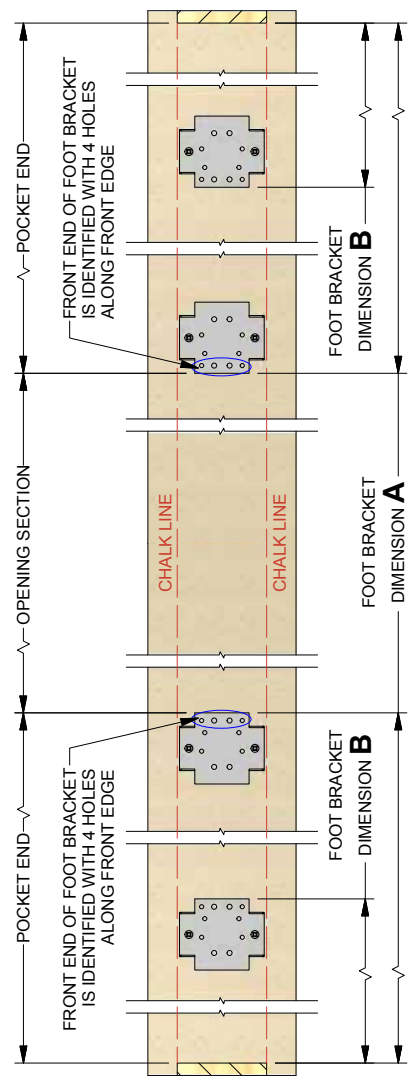
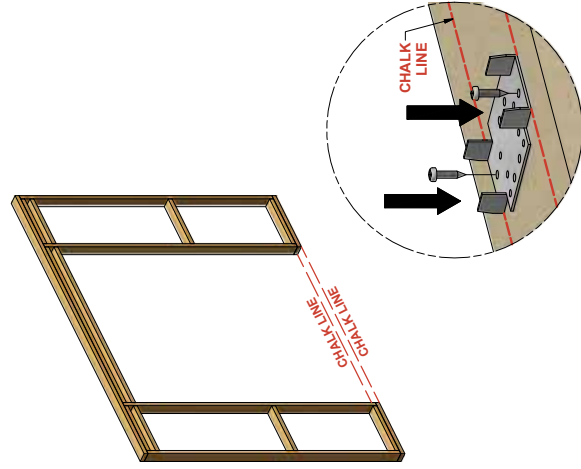
STEP #TKD-1: USE A CHALK LINE AGAINST THE BOTTOM STUDS OF THE WALL TO MARK THE LINES OF THE OPENING ON BOTH SIDES. LOCATE AND SECURE THE CP-2X4 FOOT BRACKETS (2) OR (3) FOR EXTRA WIDTH KITS AS PER THE FOOT BRACKET LOCATION CHART C LISTED BELOW. SECURE THE FOOT BRACKETS WITH #8 X 3/4" PAN HEAD SCREWS (2 PER FOOT BRACKET). **NOTE: FOOT BRACKETS HAVE A FRONT EDGE AND THIS EDGE SHOULD FACE THE OPENING AS SHOWN IN THE ILLUSTRATIONS BELOW. FOOT BRACKETS ARE TO BE MOUNTED ON FINISHED FLOOR. IF FINISHED FLOOR IS NOT INSTALLED, PLEASE SHIM FOOT BRACKETS THE THICKNESS OF THE FINISHED FLOOR. FOOT BRACKET LOCATION DIMENSIONS ARE BASED USING THE CP-TK-2X4 POCKET TRIM KIT AS PER THE DIMENSION DETAILS FOUND ON THE PREVIOUS PAGE.**

CHART C: FOOT BRACKET LOCATION DIMENSIONS A, B, C

DOOR WIDTH	DIMENSION A	DIMENSION B	DIMENSION C
18 in (1'-6")	[457 mm]	10 1/2 in [267 mm]	----
20 in (1'-8")	[508 mm]	10 1/2 in [267 mm]	----
22 in (1'-10")	[559 mm]	12 1/2 in [318 mm]	----
24 in (2'-0")	[610 mm]	12 1/2 in [318 mm]	----
26 in (2'-2")	[661 mm]	13 1/2 in [343 mm]	----
28 in (2'-4")	[711 mm]	14 1/2 in [368 mm]	----
30 in (2'-6")	[762 mm]	16 1/2 in [419 mm]	----
32 in (2'-8")	[813 mm]	16 1/2 in [419 mm]	----
34 in (2'-10")	[864 mm]	18 1/2 in [470 mm]	----
36 in (3'-0")	[914 mm]	20 1/2 in [521 mm]	----

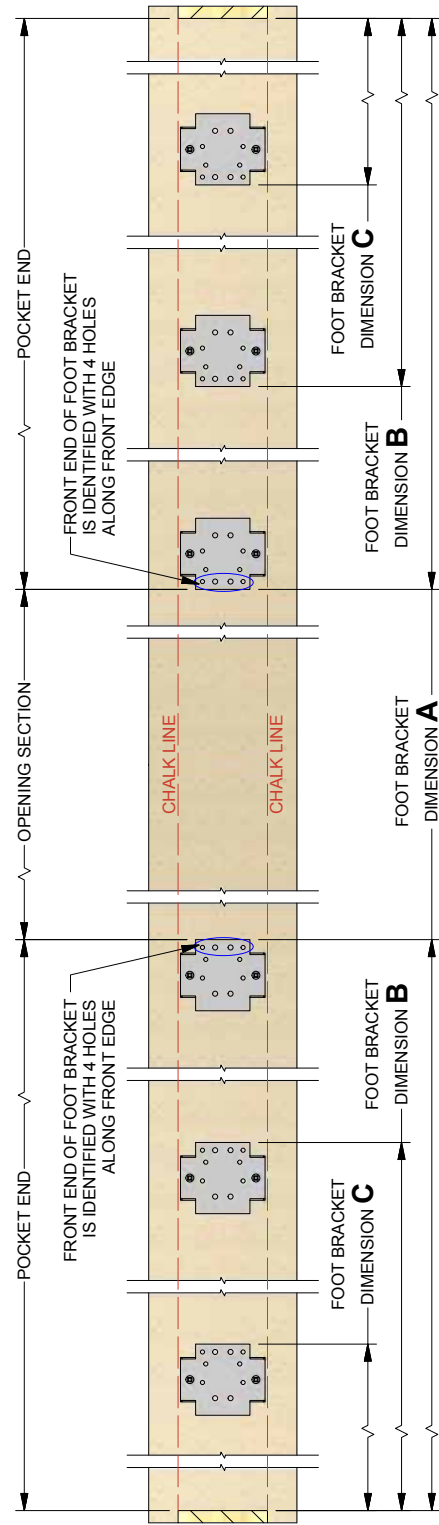
BELOW APPLY TO -EXW4 (EXTRA WIDTH) CROWDFRAME POCKET DOOR KITS

38 in (3'-2")	[965 mm]	25 1/2 in [648 mm]	12 1/2 in [318 mm]
40 in (3'-4")	[1016 mm]	27 1/2 in [699 mm]	14 1/2 in [368 mm]
42 in (3'-6")	[1067 mm]	28 1/2 in [724 mm]	14 1/2 in [368 mm]
44 in (3'-8")	[1118 mm]	30 1/2 in [775 mm]	16 1/2 in [419 mm]
46 in (3'-10")	[1169 mm]	31 1/2 in [800 mm]	16 1/2 in [419 mm]
48 in (4'-0")	[1219 mm]	32 1/2 in [826 mm]	16 1/2 in [419 mm]



**DOUBLE STD
PLAN VIEW
(FOR TWO DOORS
36 in [914 mm] WIDE
OR LESS)**

**DOUBLE-EXW4 (EXTRA WIDTH) PLAN VIEW
(FOR TWO DOORS 37 in [940 mm] TO 48 in [1219 mm] WIDE)**



STEPS #BALANCE: FOLLOW THE REMAINING STEPS FROM TYPE CC-W SINGLE DOOR POCKET KIT (AND "NR" NARROW), CPD-CC-JOINER & CP-TK-2X4 POCKET TRIM KIT INSTRUCTION SHEETS TO COMPLETE THE INSTALLATION OF THE POCKET DOORS AND THE TRIM KIT ACCORDINGLY.

NOTE: FOR STEPS THAT INVOLVE LOCATING THE FINAL POSITION OF THE DOOR, ENSURE THE TRIM KIT DETAILS ARE TAKEN INTO CONSIDERATION AS PER THE DIMENSION DETAILS ON THE PREVIOUS PAGE. IF NOT, THE DOOR MAY NOT OPEN AND CLOSE PROPERLY ONCE THE TRIM KIT IS INSTALLED.