



K.N. CROWDER MFG. INC.
1220 BURLOAK DRIVE
BURLINGTON, ONTARIO
L7L 6B3 CANADA

K.N. CROWDER. INC.
210 EIGHTH STREET SOUTH
LEWISTON, NEW YORK
14092 U.S.A.

TOLL-FREE PHONE: 1-866-999-1KNC (1562)
WEBSITE: kncrowder.com
EMAIL: customerservice@kncrowder.com
© 2021 K.N. CROWDER MFG. INC. All Rights Reserved.

SDL LOUVERS COLOUR CHART

KNC SDL-V90, SDL-FP, SDL-SG Louvers are painted or primed using a VOC-free electrostatic painting process that causes the paint to be attracted to all exposed surface areas of the metal. This method yields a continuous coat of paint both inside and outside of the part providing excellent protection against moisture and dust, giving your product the longest lifespan possible.



Mineral Bronze (B)



AMS Beige (AB)



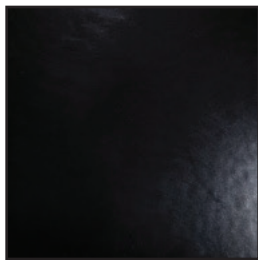
SC Beige (SB)



Sand (S)



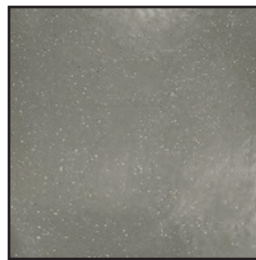
Brass (BRA)



Black (BK)



Flat Black (FBK)



Gray (G)



Silver (SI)



White (W)

Stock finish is only Mineral Bronze.

Lead time & pricing of the above colours available through Customer Service.

Please email customerservice@kncrowder.com

SDL Louver Paint/Re-coating Suggestions (For steel and galvanized steel products only):

The powder coat paints used on our Steel and Galvanized product may be re-coated provided the procedures listed below are followed:

- Abrade the entire paint surface with an abrasive pad. Choose a pad designed not to shred, rust or splinter.
- It is recommended that all parts be cleaned well, before any paint is applied in the field. After abrading the surface, the parts should be wiped with an alcohol-based product which will clean and help reopen the surface for the best adhesion of the topcoat. Be sure to read the product directions prior to use
- Use a high-quality paint that is suitable for metal. K.N. Crowder Mfg. Inc. cannot accept liability for the performance of specific brands of paint.