

CRT-100 SERIES

ROUND BAR TRACK SERIES

new

Architecture & Design Collection



CRT-103 GLASS HANGER

FACE MOUNT FOR GLASS DOORS

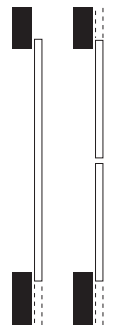
NEW & MODERN Crowdertrack Round Bar Track (CRT) series features Fashionable & Original Face Mount hangers for full glass doors. Ideal for a high end barn door style sliding hardware for use with tempered glass doors.

Prominent & Exposed hardware for surface mounted barn door style applications: featuring large, 3-1/2" [88.9mm] diameter, delrin wheels with polished stainless steel side plates. Delrin has excellent strength and wear resistance while providing minimal friction. Combined with precision ball bearings, these wheels provide extremely smooth and silent door operation. Precision machined and polished Solid 304 Satin Stainless Steel round bar track and hardware components combined for state-of-the-art appearance.

Our **CRT-103 Hanger** requires two 3/4" [19.1mm] holes per hanger in order to clamp the glass door to the hanger. Works for 3/8" [10mm] to 1/2" [12mm] thick glass.

- **CRT-100 Track** Polished 304 **Satin Stainless Steel 1" [25.4mm] Solid Round Bar** weighing 2.700 lbs. per foot.
- Load Capacity **350 lbs. (two hangers)**
- Load Capacity **450 lbs. (three hangers)**
- Load Capacity **600 lbs. (four hangers)**

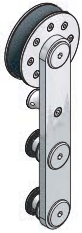
Up to **350 lbs.** per door



CRT-103 COMPLETE KIT FOR ONE DOOR

2 - CRT-103

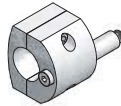
Face mount glass hangers (specify glass thickness) complete with anti-lift and custom mounting screws



CRT-111-WB wall mount brackets for round bar track (quantity is based on kit size). Complete with 5/16"-18 Socket Cap Screws and Expansion Shields.



2 - CRT-110 shock absorbing stops (clamps around 1" [25.4mm] bar)



1 - CRT-100 1" round bar track x length based on kit size (eg. 72" [1829mm] Kit for 36" [914mm] wide door)



1 - CGGS-038 (for 3/8" [10mm]) or **CGGS-012** (for 1/2" [12mm]) Aluminum Bottom Glass Stationary Guide



CRT-103-GWB (Glass Wall Bracket) also available. Please contact Customer Service for more information.



CRT-103 HANGER WITH CRT-100 TRACK DETAIL

FACE MOUNT FOR 3/8" [10MM] OR 1/2" [12MM] THICK GLASS DOORS.

