

CFT-200 SERIES

FLAT BAR TRACK SERIES

new

Architecture & Design Collection



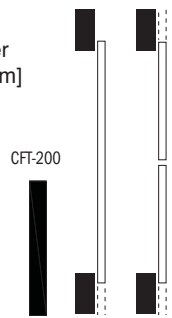
CFT-202 HANGER STRAP MOUNT FOR WOOD DOORS

NEW Crowdertrack Flat Bar Track (CFT) series features Fashionable & Original Strap Mount Hangers for wood doors. Ideal for barn door style hardware to mimic the old-school flat track sliding system used in Barns. Mimicking the traditional flat track system used in barns, of steel rollers on a steel bar, this series is ideal for industrial style barn doors. The CFT series is available in 304 Stainless Steel polished to satin finish, and steel with Black Finish. Other finishes available upon request. This series is only suitable for 1-3/4" [44.5mm] thick doors.

Our **CFT-202 Hanger** requires two 3/4" [19.1mm] holes per hanger in order to clamp the wood door to the hanger.

- **CFT-200-SS Track** Polished 304 Satin Stainless Steel 1/4" [6.4mm] x 2" [50.8mm] Solid Flat Bar weighing 1.720 lbs. per foot.
- **CFT-200-BP Track** Black Finish Cold Rolled Steel 1/4" [6.4mm] x 2" [50.8mm] Solid Flat Bar weighing 1.700 lbs. per foot.
- Load Capacity **300 lbs. (two hangers)**
- Load Capacity **450 lbs. (three hangers)**
- Load Capacity **600 lbs. (four hangers)**

Up to 300 lbs. per door



CFT-202 COMPLETE KIT FOR ONE DOOR

2 - CFT-202 strap mount hangers complete with anti-lift and custom mounting screws.

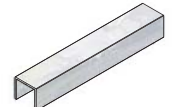


CFT-222-WB wall mount brackets for flat bar track (quantity is based on kit size). Complete with 5/16"-18 flat head socket screws and expansion shields.

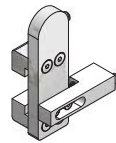


1 - CFT-200 (1/4" x 2" Flat bar track) X length based on kit size (eg. 72" [1829mm] Kit for 36" [914mm] wide door)

1 - C-914 aluminum guide channel x length based on kit size (eg. 72" [1829mm] kit = 36" [914mm] long guide channel)



2 - CFT-220 shock absorbing stops (clamps around 2" [50.8mm] x 1/4" [6.4mm] flat bar)



1 - C-913 floor guide complete with screws



CFT-202 HANGER WITH CFT-200 TRACK DETAIL

STRAP MOUNT FOR 1-3/4" [44.5MM] THICK DOORS.

