

SINGLE TRACK SYSTEMS

HEAVY-DUTY

C-207-4 OR C-207-8 HANGER

C-204 TRACK

For Single & Bi-Parting, By-Passing, Pocket or Wall Mounted Doors

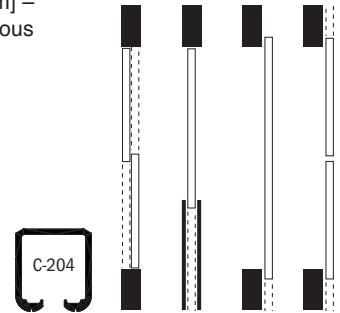
Four Precision Ball Bearings, Steel wheels. Clamp type face mounting – adjustable for thickness of door (1-3/4" [44.5mm] – 2-1/4" [57.2mm]) using shim spacers on main bolt. Continuous Hanger for full door widths also available.

- Use with Extruded Aluminum **C-204 Track**, 6061T6 Alloy

- **C-207-4 Hanger** Four-wheel version
- Load Capacity **500 lbs. (two hangers)**
- **C-207-8 Hanger** Eight-wheel version
- Load Capacity **700 lbs. (two hangers)**

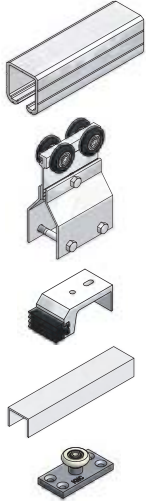
Up to 500 lbs. per door for C-207-4

Up to 700 lbs. per door for C-207-8



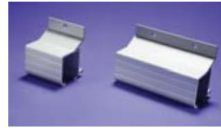
C-207-4 OR 207-8 COMPLETE KIT FOR 1 DOOR

COMPLETE KITS AVAILABLE FOR 24" [610MM] TO 72" [1829MM] WIDE DOORS. FOR BY-PASSING DOOR APPLICATIONS USE TWO COMPLETE KITS.



- 1 - C-204 TRACK
LENGTH: 2 X DOOR WIDTH
(EXAMPLE: 36" [914MM] DOOR = 72" [1829MM] TRACK)
- 2 - C-207-4 OR C-207-8 HANGERS
COMPLETE WITH BOLTS, WASHERS & NUTS
- 2 - C-100HD IN-TRACK STOP COMPLETE WITH SCREWS
- 1 - C-914 GUIDE CHANNEL
LENGTH: EQUAL TO DOOR WIDTH
(EXAMPLE: 36" [914MM] DOOR = 36" [914MM] GUIDE CHANNEL)
- 1 - C-913 FLOOR GUIDE COMPLETE WITH SCREWS

OPTIONAL PRODUCTS



C-205 Side-Mount Bracket/C-203 Side Mount Joiner.
(See page 68 for more details).



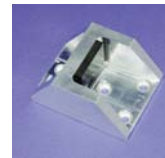
C-90 Door Locks & Pulls Series. (See pages 72-75 for more details).



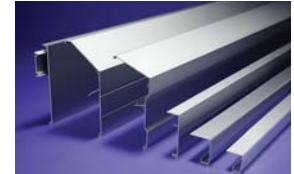
C-80 Door Locks & Pulls Series. (See pages 72-75 for more details).



CAS-1 or CAS-2 Stops.
(See page 69 for more details).

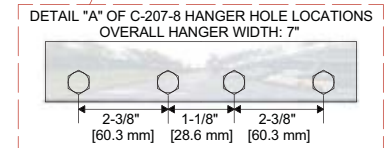
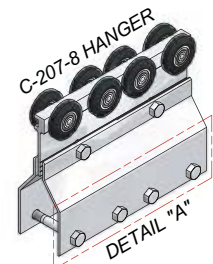
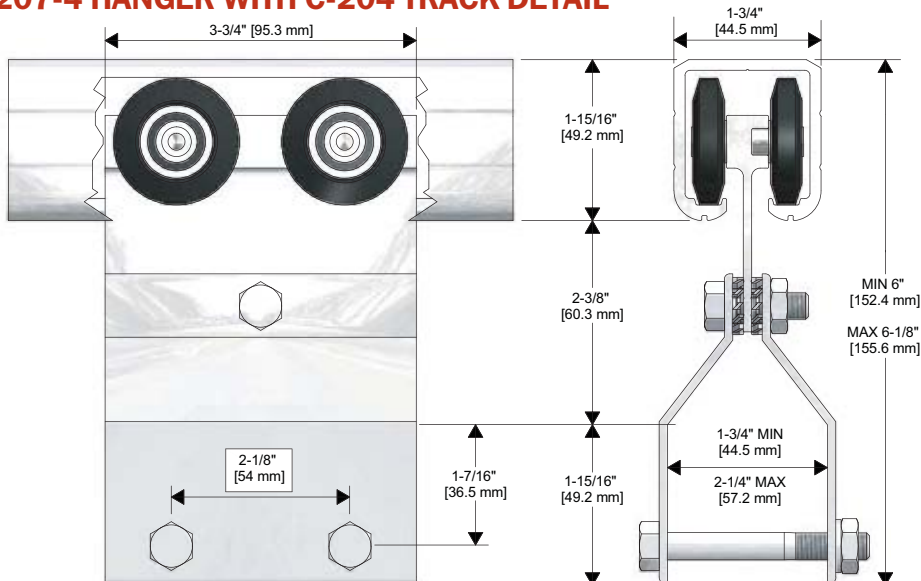


C-102HD Floor Stop. (See page 69 for more details).



Optional Fascias.
(See page 67 for more details).

C-207-4 HANGER WITH C-204 TRACK DETAIL



CONTINUOUS HANGER
Available for any door width