

# SINGLE TRACK SYSTEMS

MEDIUM TO HEAVY-DUTY

## C-911 QUICK RELEASE HANGER C-104 TRACK

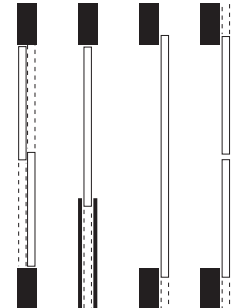
Up to  
200 lbs.  
per door



**Quick Release "Spinwheel" Hanger  
For Single & Bi-Parting, By-Passing, Pocket  
or Wall Mounted Doors**

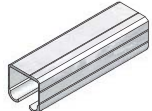
An essential safety feature for **Nursing Homes and Hospitals**. The Quick Release Hanger with four Precision ball bearing, nylon tire wheels, allows for fast and easy door removal from the outside (eg: when a patient in distress in a washroom requires immediate assistance). Levelling and height adjustment can be accomplished by one person during door installation. Minimum clearance of 1/2" [12.7mm] required between door and fascia to permit disengagement.

- Use with Extruded Aluminum **C-104 Track**, 6063T5 Alloy
- Load Capacity **200 lbs. (two hangers)**

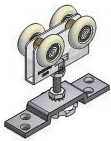


### C-911 COMPLETE KIT FOR 1 DOOR

COMPLETE KITS AVAILABLE FOR 24" [610MM] TO 72" [1829MM] WIDE DOORS. FOR BY-PASSING DOOR APPLICATIONS USE TWO COMPLETE KITS.



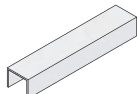
- 1 - C-104 TRACK  
LENGTH: 2 X DOOR WIDTH (EXAMPLE: 36" [914MM] DOOR = 72" [1829MM] TRACK)



- 2 - C-911 HANGERS  
COMPLETE WITH SCREWS



- 2 - CDC-911 DOOR STOP & CATCH COMPLETE WITH SCREWS.

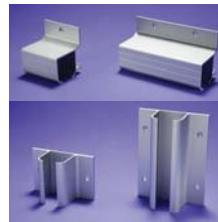


- 1 - C-914 GUIDE CHANNEL  
LENGTH: EQUAL TO DOOR WIDTH (EXAMPLE: 36" [914MM] DOOR = 36" [914MM] GUIDE CHANNEL)



- 1 - C-913 FLOOR GUIDE COMPLETE WITH SCREWS

### OPTIONAL PRODUCTS



C-402 Side-Mount Bracket/  
C-403 Side-Mount Joiner or  
C-406/C-407 Top Mount Bracket.  
(See page 68 for more details).



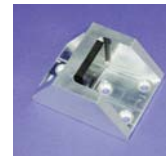
C-90 Door Locks & Pulls  
Series. (See pages  
72-75 for more details).



C-80 Door Locks & Pulls  
Series. (See pages  
72-75 for more details).



CAS-1 or CAS-2 Stops.  
(See page 69 for more  
details).

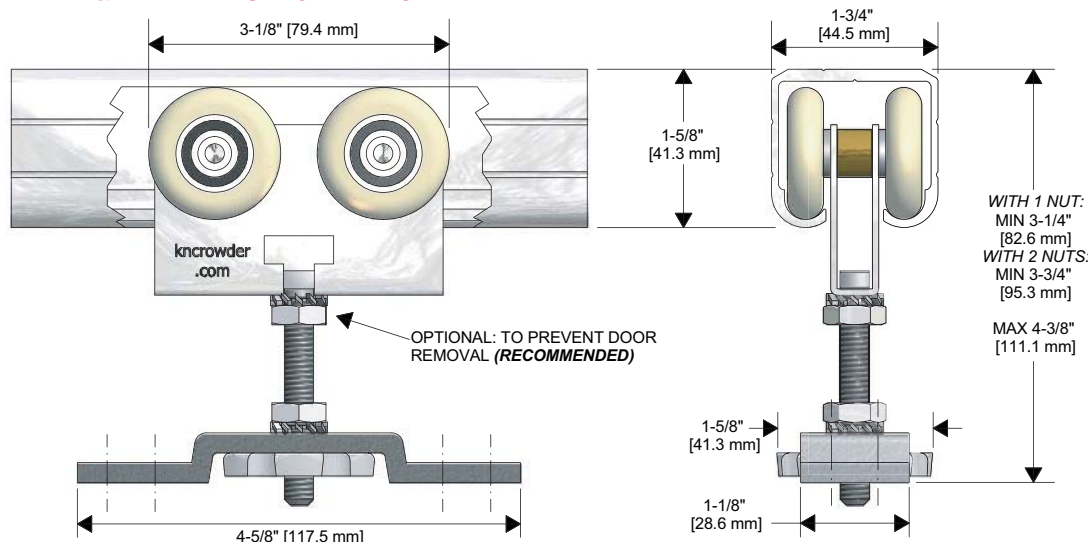


C-102HD Floor  
Stop. (See page 69  
for more details).



Optional Fascias.  
(See page 67 for more details).

### C-911 HANGER WITH C-104 TRACK DETAIL



www.kncrowder.com

A PRODUCT OF K. N. CROWDER MFG. INC.