

SINGLE TRACK SYSTEMS

MEDIUM TO HEAVY-DUTY

C-106-4 HANGER C-104 TRACK

For Single & Bi-Parting, By-Passing, Pocket or Wall Mounted Doors

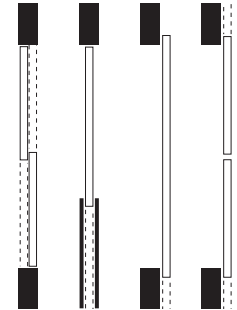
Four precision ball bearing, nylon tire wheels per hanger. Locknuts hold vertical adjustment. Suitable for all types of heavy sliding doors.

- Use with Extruded Aluminum **C-104 Track**, 6063T5 Alloy
- Load Capacity **175 lbs. (two hangers)**

Up to 175 lbs. per door



We specialize in Curved Track applications. See page 7 for details.

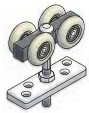


C-106-4 COMPLETE KIT FOR 1 DOOR

COMPLETE KITS AVAILABLE FOR 24" [610MM] TO 72" [1829MM] WIDE DOORS. FOR BY-PASSING DOOR APPLICATIONS USE TWO COMPLETE KITS.



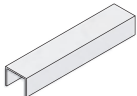
- 1 - C-104 TRACK
LENGTH: 2 X DOOR WIDTH (EXAMPLE: 36" [914MM] DOOR = 72" [1829MM] TRACK)CK



- 2 - C-106-4 HANGERS
COMPLETE WITH SCREWS



- 2 - C-100HD IN-TRACK STOP COMPLETE WITH SCREWS

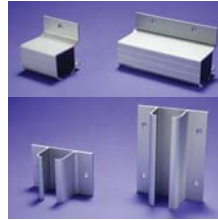


- 1 - C-914 GUIDE CHANNEL
LENGTH: EQUAL TO DOOR WIDTH (EXAMPLE: 36" [914MM] DOOR = 36" [914MM] GUIDE CHANNEL)



- 1 - C-913 FLOOR GUIDE COMPLETE WITH SCREWS

OPTIONAL PRODUCTS



C-402 Side-Mount Bracket/
C-403 Side-Mount Joiner or
C-406/C-407 Top Mount Bracket.
(See page 68 for more details).



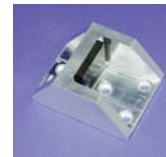
C-90 Door Locks & Pulls
Series. (See pages
72-75 for more details).



C-80 Door Locks & Pulls
Series. (See pages
72-75 for more details).



CAS-1 or CAS-2 Stops.
(See page 69 for more
details).



C-102HD Floor
Stop. (See page 69
for more details).



Optional Fascias.
(See page 67 for more details).

C-106-4 HANGER WITH C-104 TRACK DETAIL

