

DUAL TRACK BY-PASS SYSTEMS

LIGHT DUTY

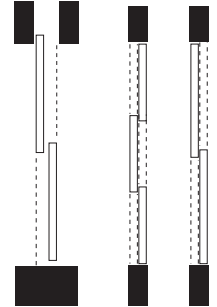
C-650 HANGER

C-650 TRACK

For By-Passing Light Duty Doors.

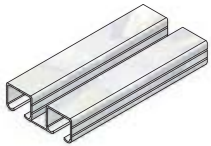
Design of an extra strong hanger is particularly useful on plywood or special material doors because of the secure anchorage it provides. Six nylon wheels assure smooth, quiet performance of every door. Concealed track and hangers require 1" headroom only.

- Use with Extruded Aluminum **C-650 Track**, 6063T5 Alloy
- Load capacity **75 lbs. (two hangers)**



C-650 COMPLETE KIT FOR 2 DOORS

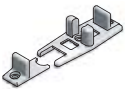
COMPLETE KITS AVAILABLE FOR DOOR WIDTHS FROM 24" [610MM] TO 72" [1829MM], AND WITH HARDWARE FOR 2 DOORS.



- 1 - C-650 TRACK
LENGTH: 2 X DOOR WIDTH
(EXAMPLE: 36" [914MM] DOOR = 72" [1829MM] TRACK)

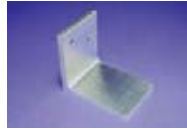


- 4 - C-650 HANGERS COMPLETE WITH EXPANSION SLEEVES



- 1 - C-1205 SELF ALIGNING FLOOR GUIDES COMPLETE WITH SCREWS

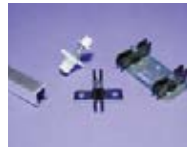
OPTIONAL PRODUCTS



CDSM-1 Side-Mount Bracket. (See page 68 for more details).



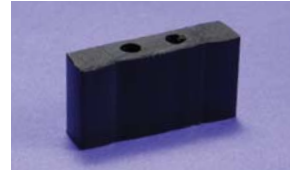
C-23, C-25, C-70, C-75 Door Pulls. (See page 72 for more details).



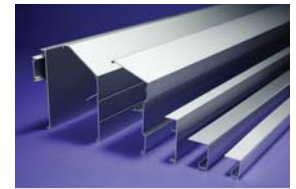
C-200 Guide, C-200D-138 Double Roller Guide or C-200B Spring Loaded Guide & C-201 Guide Channel. (See page 71 for more details).



C-238 or C-238S Guide Threshold. (See page 71 for more details).

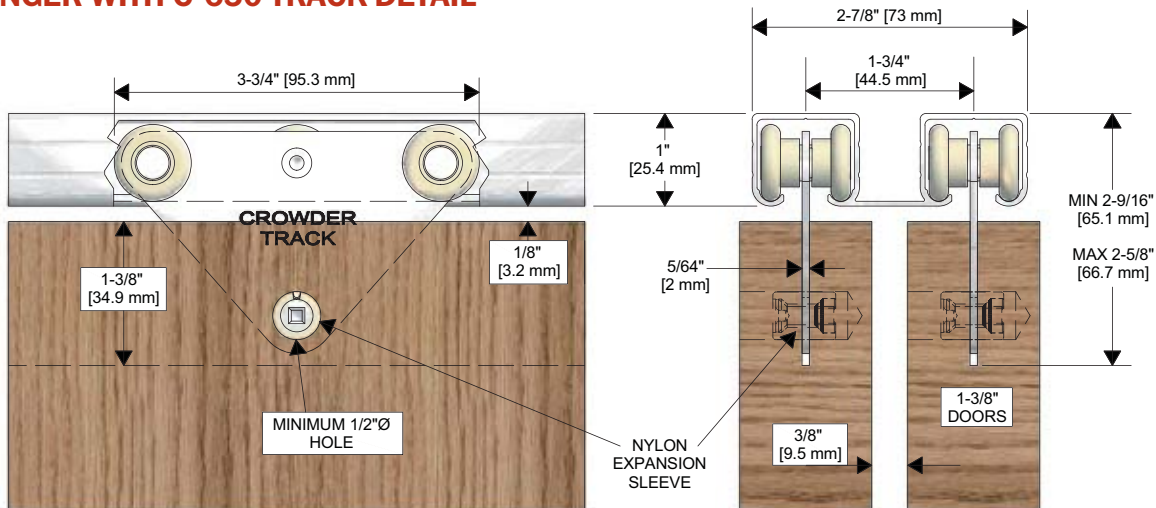


C-100 In-track Stop. (See page 69 for more details).



Optional Fascias. (See page 67 for more details).

C-650 HANGER WITH C-650 TRACK DETAIL



Dual By-pass Tracks