

BI-FOLD & PIVOTING SYSTEMS

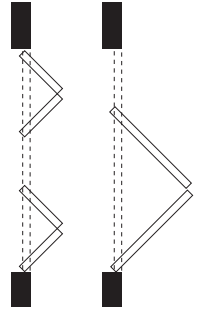
MEDIUM DUTY

CF-115 FOLDING DOOR HARDWARE

This series of folding door hardware is for medium weight bi-fold doors that are in constant use. **CF-115** pivot hanger has four ball bearing wheels with nylon tires. Maximum door height equals floor to header less 3" [76.2mm]. Minimum door height equals floor to header less 4" [101.6mm]. Hinges by others.

- Use with Extruded Aluminum **CF-115 Track**, 6063T5 Alloy
- Load capacity **50 lbs. per panel/leaf**
- All **CF-115** pivot parts are sturdy aluminum extrusion or steel

Up to 50 lbs. per panel

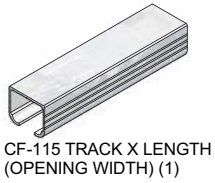


CF-115



CF-115 COMPLETE KIT FOR 2 DOORS BI-FOLDING

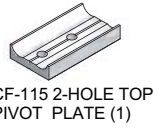
BI-FOLDING KITS AVAILABLE FROM 48" [1219MM] TO 144" [3658MM] TRACK WIDTH AND UP TO 4 DOORS.



CF-115 TRACK X LENGTH (OPENING WIDTH) (1)



CF-115 HANGER (1)



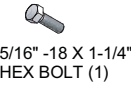
CF-115 2-HOLE TOP PIVOT PLATE (1)



CF-115 TOP PIVOT STUD (1)



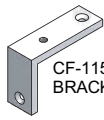
CF-115 BOTTOM PIVOT STUD (1)



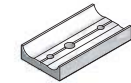
5/16" -18 X 1-1/4" HEX BOLT (1)



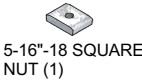
5/16" HEX NUT (3)



CF-115 ANGLE BRACKETS (3)



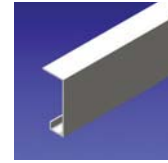
CF-115 3-HOLE BOTTOM PIVOT PLATE (1)



5-16" -18 SQUARE NUT (1)

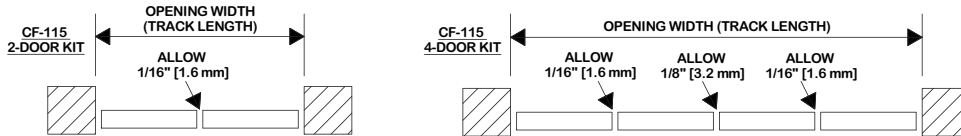
KITS COME COMPLETE WITH SCREWS

OPTIONAL PRODUCTS

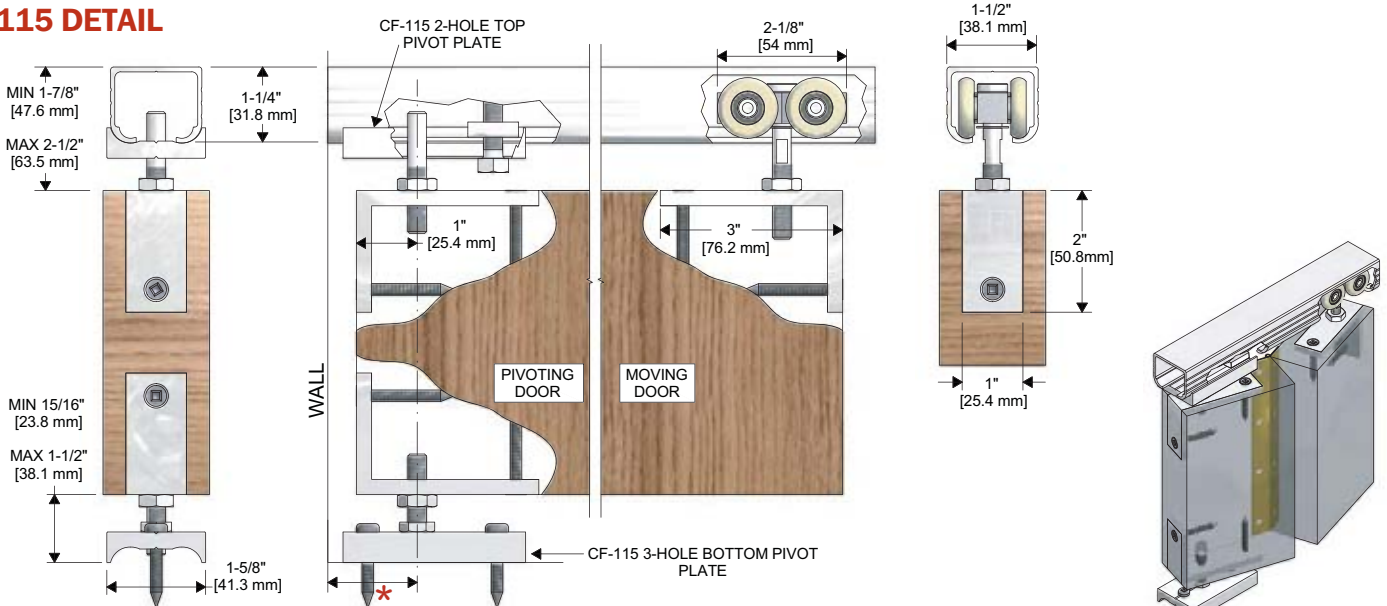


C-175 Fascia. (See Page 67 for more details).

PLAN VIEWS SHOWING CLEARANCE BETWEEN DOORS



CF-115 DETAIL



* 1-1/4" FOR 1-3/8" DOOR THICKNESS

* 1-3/8" FOR 1-3/4" DOOR THICKNESS