

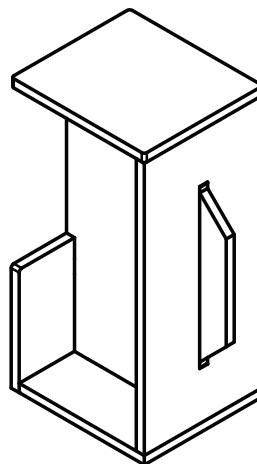
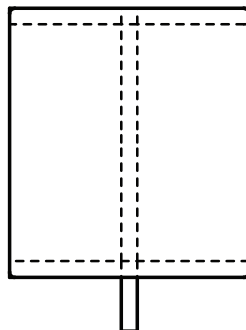
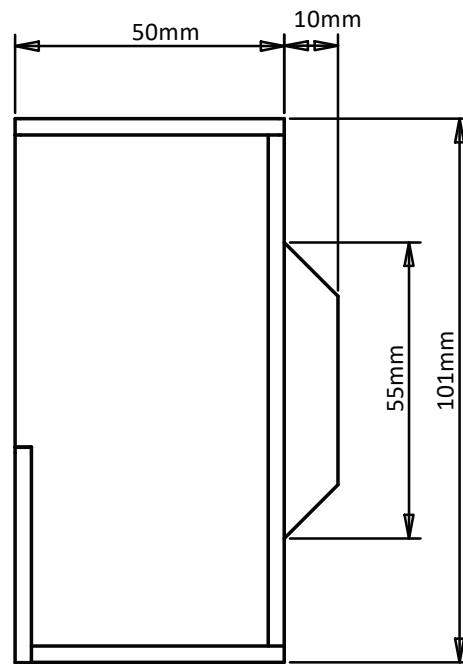
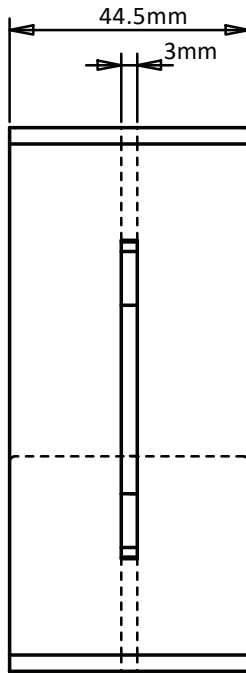
C-25 WOOD DOOR EDGE PULL

PRODUCT DETAIL & INSTALLATION TEMPLATE



INSTALLATION:

1. Cut out a pocket from the door edge to fit the C-25 Edge Pull, including a notch for the 3mm x 10mm x 55mm protrusion on the back.
2. Apply some construction adhesive to the notched out area, and on the top, bottom and back of the Pull to assist in holding the Pull firmly on the door.
3. Press-fit into the pocket, clean off any excess adhesive and allow the adhesive to dry properly before use.



K.N. CROWDER MFG. INC.

1220 BURLOAK DRIVE
BURLINGTON, ONTARIO, CANADA, L7L 6B3
TOLL-FREE PHONE: 1-866-999-1KNC (1562)
TOLL-FREE FAX: 1-800-567-0123

WEBSITE: www.kncrowder.com --- EMAIL: customerservice@kncrowder.com

K.N. CROWDER INC.

210 EIGHTH STREET SOUTH
LEWISTON, NEW YORK, U.S.A. 14092
TOLL-FREE PHONE: 1-866-999-1KNC (1562)
TOLL-FREE FAX: 1-800-567-0123

© 2018 K.N. CROWDER MFG. INC. All Rights Reserved.