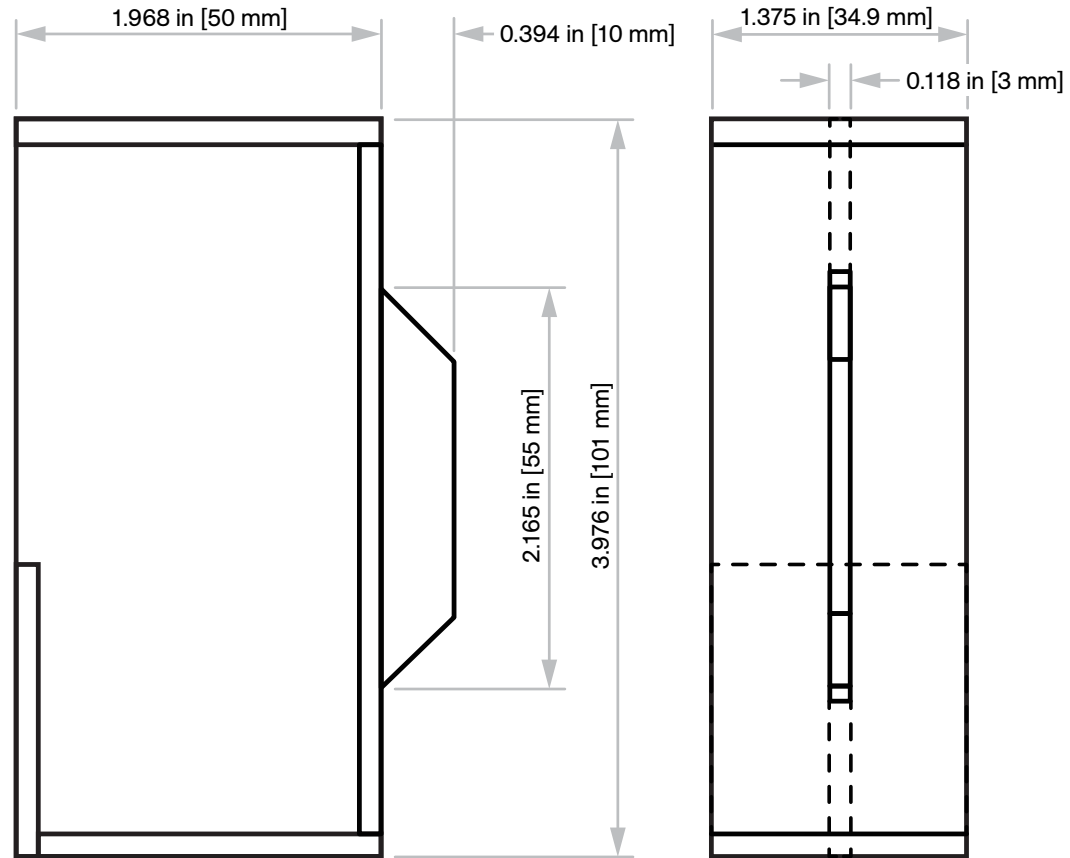
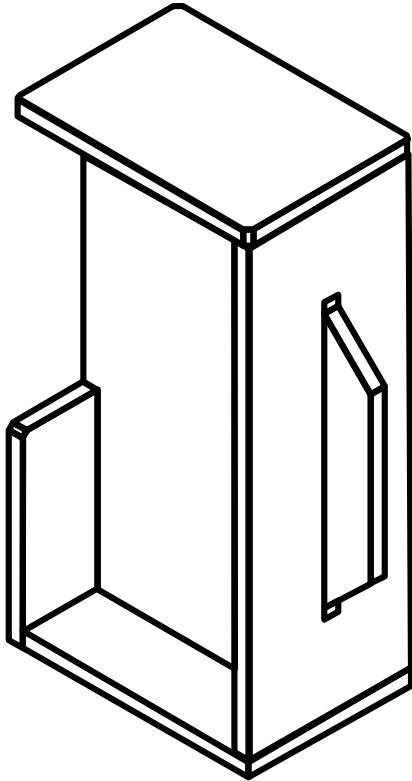


# C-23 Door Pull

Installation Instructions

**Door Thickness:** 1 3/8 in [34.9 mm]

**Not to scale**



## Step #1:

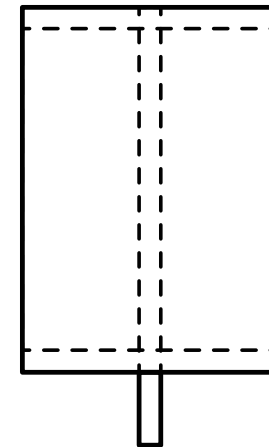
Cut out a pocket from wood door edge to fit C-23, including a notch for 0.118 in [3 mm] x 0.394 in [10 mm] x 2.165 in [55 mm] protrusion on back.

## Step #2:

Apply some construction adhesive to notched out area, and on top, bottom and back of pull to assist in holding pull firmly on door.

## Step #3:

Press-fit into pocket clean off any excess adhesive and allow adhesive to dry properly before use.



# KN Crowder

1220 Burloak Drive, Burlington, Ontario, Canada, L7L 6B3

T. 1-866-999-1562 customerservice@kncrowder.com kncrowder.com

© 2020-2025 K.N. Crowder Mfg. Inc. All Rights Reserved.

**KNC**  
Door Locks & Pulls