

C-30 Privacy Door Lock & Pull

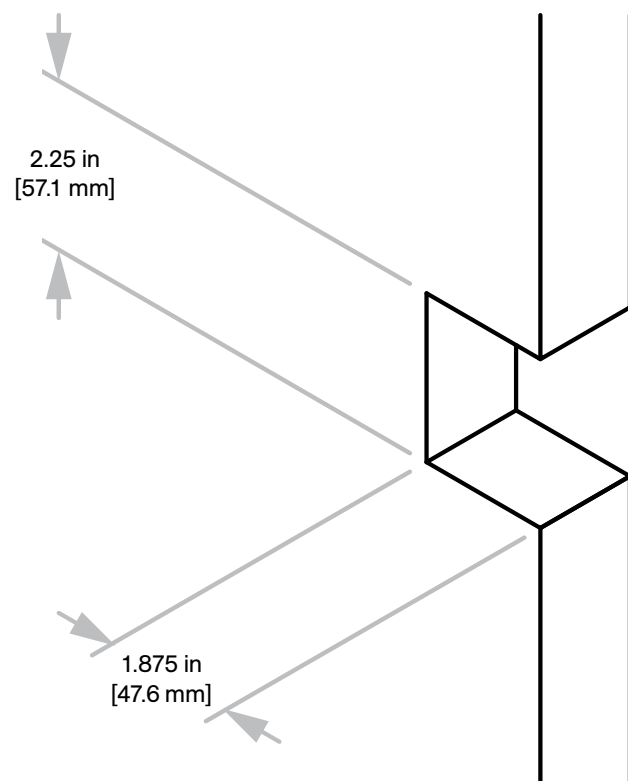
C-40 Passage Pull

Door Preparation & Installation

Not to scale

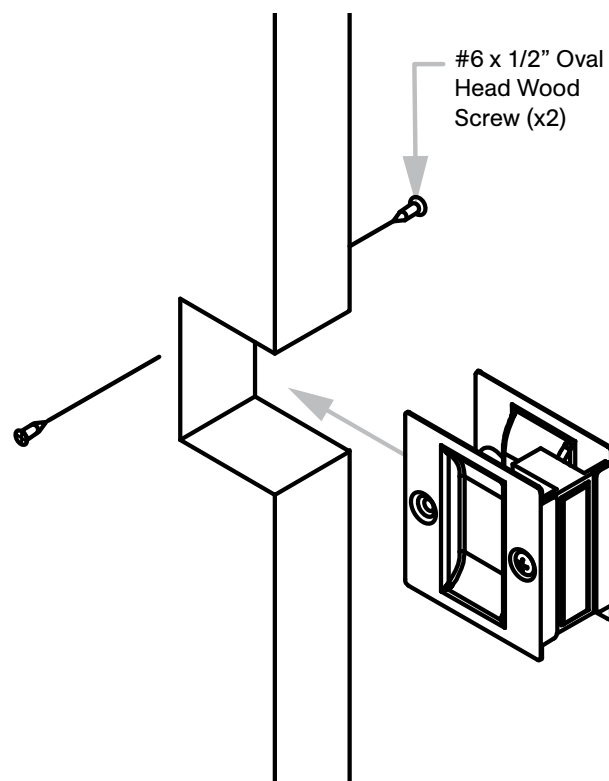
Step #1:

Cut notch in door as shown above.



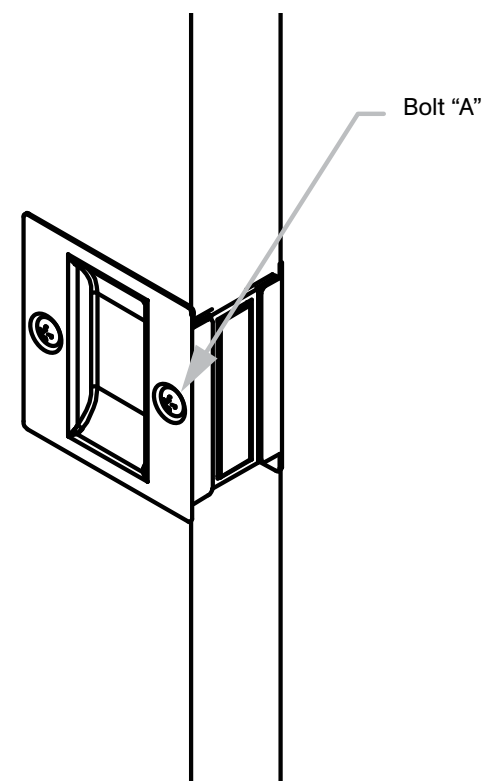
Step #2:

Slip pull into position as shown.



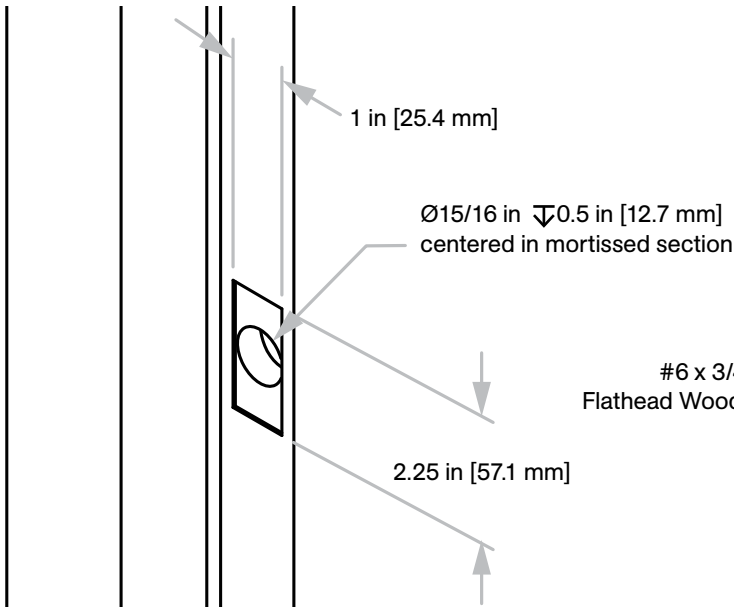
Step #3:

Bolt "A" (one per side) adjusts width of pull and tightens pull on door. Install wood screws (step 2) after adjusting each bolt "A".

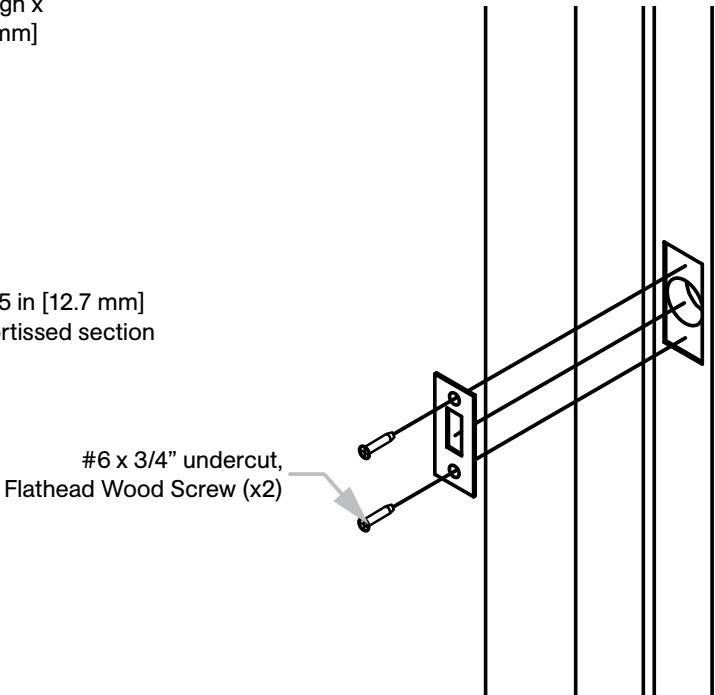


Strike Preparation & Installation (C-30 only)

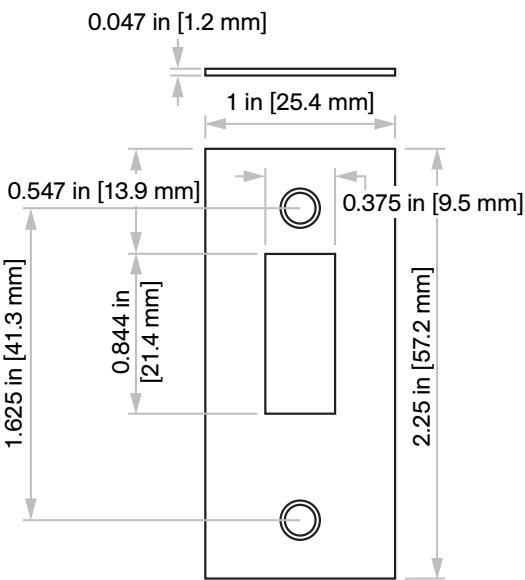
Step #1:
Mark and mortise strike on jamb to match lock position on door. Mortise 1 in [25.4 mm] wide x 2.25 in [57.1 mm] high x 0.047 in [1.1 mm] deep, drill Ø15/16 in hole 0.5 in [12.7 mm] deep in center of mortise.



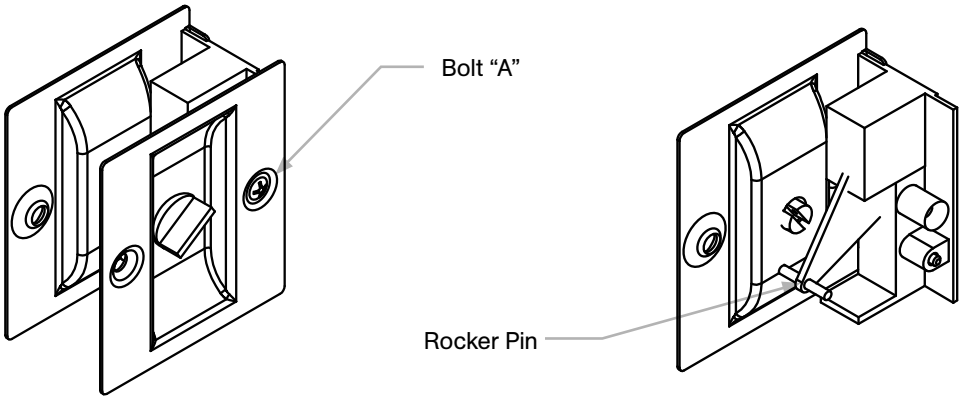
Step #2:
Install strike plate as shown below.



Strike Details



Assemble After Reversing Plates



Plates can be reversed to match required orientation. Unscrew both bolts "A" to remove plates. Reverse and reattached. Be sure to engage fork arm with rocker pin before reinstalling bolts.