

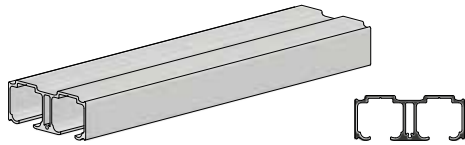
C-548-GT

Installation Instructions

KNC

- Top mount hanger with 3/4 in [19.1 mm] adjustment range
- Precision ground ball bearings with nylon wheels
- Cycle tested up to 150,000 times
- Top mount double (bypass) track
- For 1 3/8 in [34.9 mm] doors
- For up to 150 lbs. [68 kg] doors
- With guide threshold system
- Optional snap-on fascia (C-521)

Parts' List

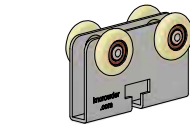


C-538 Top Mount Double (Bypass)

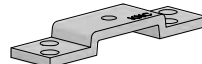
Track x length (1)

Length = 2 x door width, example:

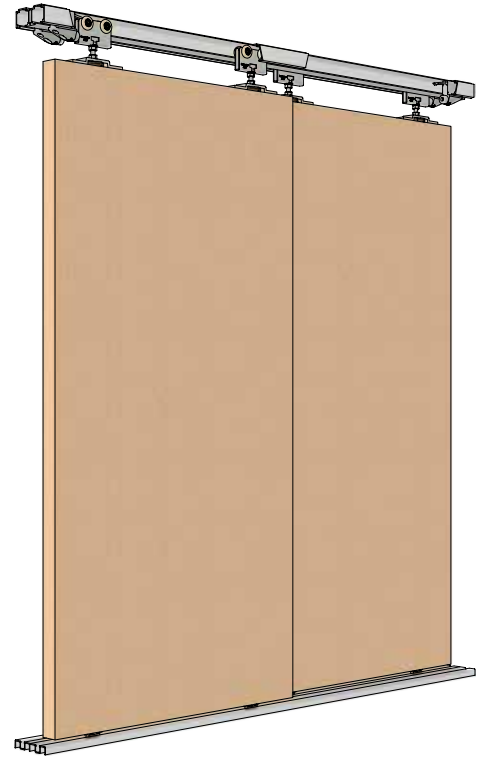
36 in [914 mm] door = 72 in [1829 mm] track



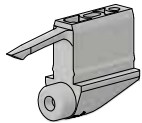
C-411 Hanger Body (4)
c/w wheels



C-411 Top Plate (4)



Complete C-548-GT kit illustrated.
Cut-outs in track to expose components.



CDC-411
Catch/Stop (4)



#10 x 2-1/4" Self-Drilling Screw (8)
[FT6]



C-411 T-Bolt (4)



C-411 Spinwheel Nut (4)



#8 x 3/4" Pan Head Screw (16)
[FT2]



5/16-18 K-Lock Nut (8)
[FT17]

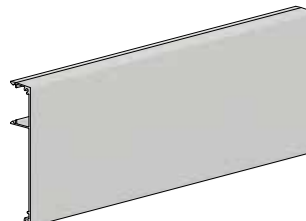


#10 x 1-3/4" Flathead Screw (16)
[FT9]

Optional Add-on Products



Complete C-548F kit illustrated. Cut-outs in track to expose components.

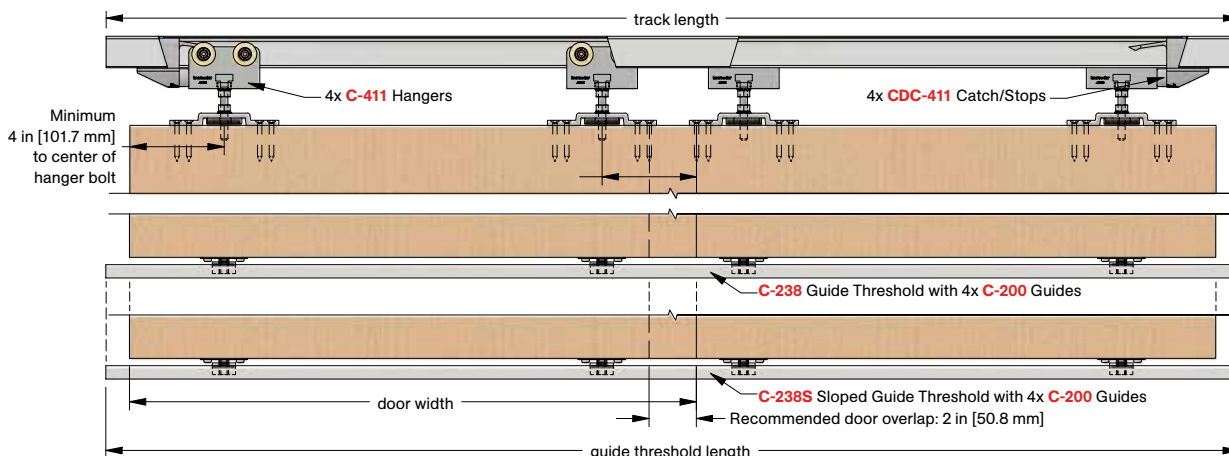


C-521 Snap-on Fascia x length (1)

Length = same as track length, example:

72 in [1829 mm] track = 72 in [1829 mm] fascia

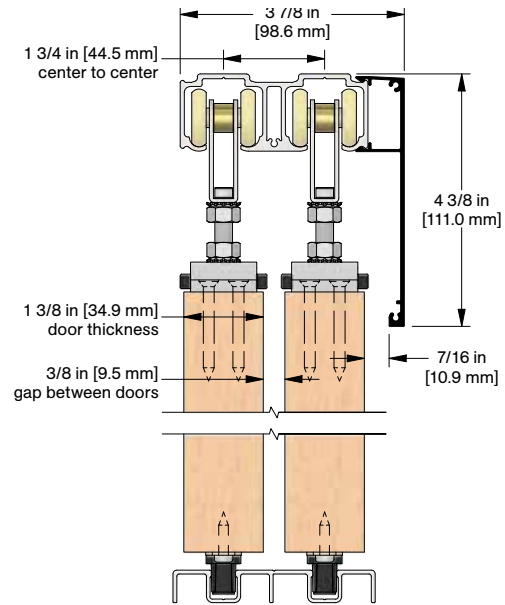
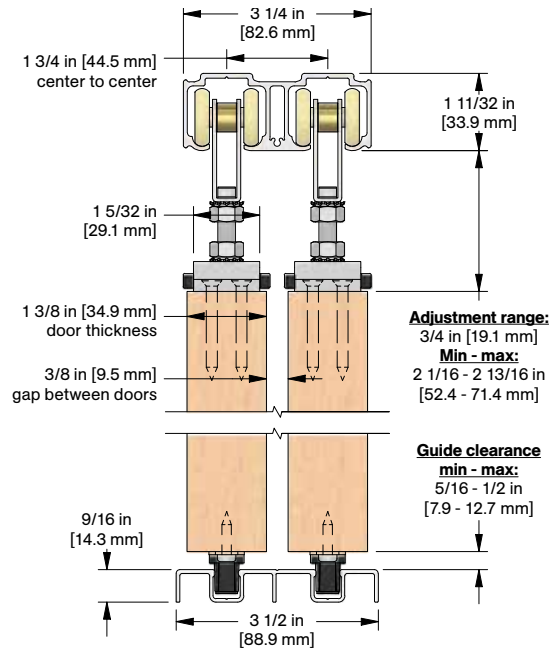
Elevation View



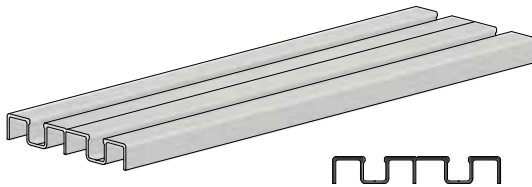
Product Details and Dimensions

Section View

Optional C-521 Snap-on Fascia illustrated as solid black profile

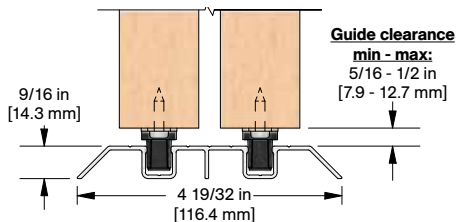
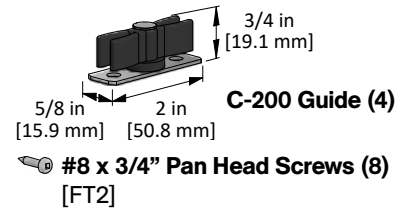


C-548-GT



C-238 Guide Threshold x length (1)

Length = same as track length, example:
72 in [1829 mm] track = 72 in [1829 mm]
guide threshold

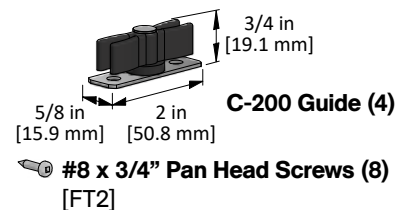


C-548-SGT



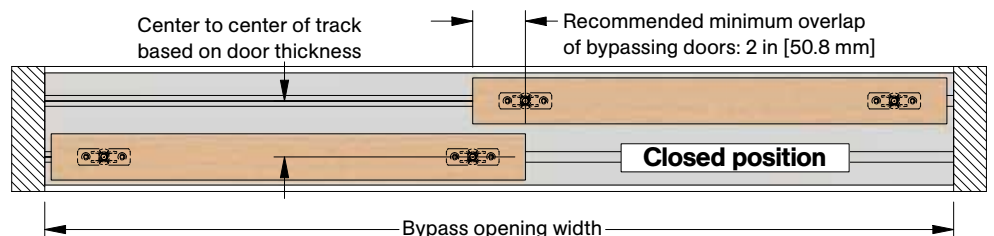
C-238S Sloped Guide Threshold x length (1)

Length = same as track length, example:
72 in [1829 mm] track = 72 in [1829 mm]
guide threshold



Typical installation location for floor guides

For bypassing applications



Installation Steps

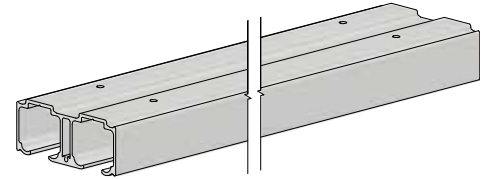
Step #1:

Determine door size, header height, track position and bottom clearance based on the kit code ordered by using dimensions shown in detail views on previous page.

Step #2:

Note: If access to the ends of track is not available, step #3 must be completed before step #2.

Cut C-538 aluminum track to size if required, typically 2 x the door width. Locate and pre-drill $\varnothing 3/16$ in [4.7 mm] holes through center of track. Secure track to structural support/header with #8 x 3/4" Pan Head Screws [FT2], quantity of 16 are supplied.

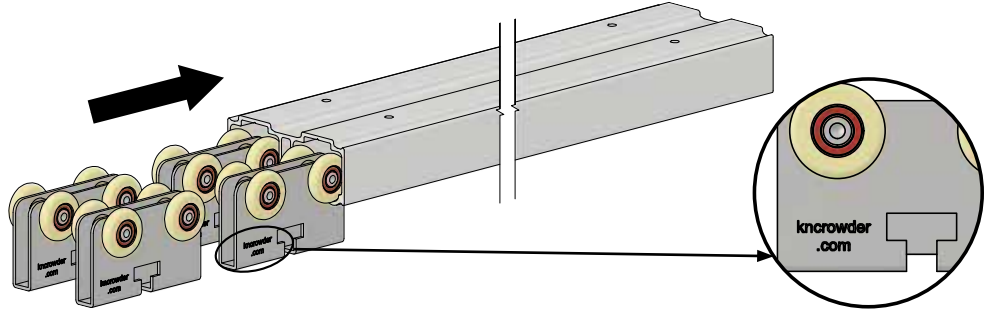


Note: Solid support is required and spacing is recommended to be between 12-16 in [300-400 mm] on center. Consult structural engineer to ensure adequate support and fastening.

Step #3:

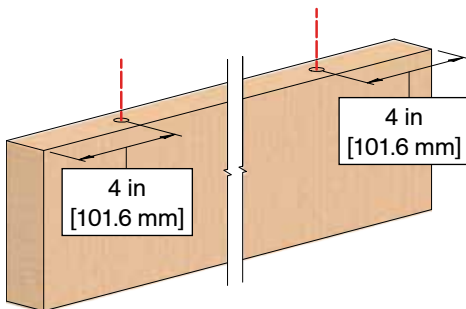
Slide four (4) C-411 Hanger Bodies with wheels into track as shown.

Note: Ensure "kncrowder.com" text on hanger bodies both face same side.



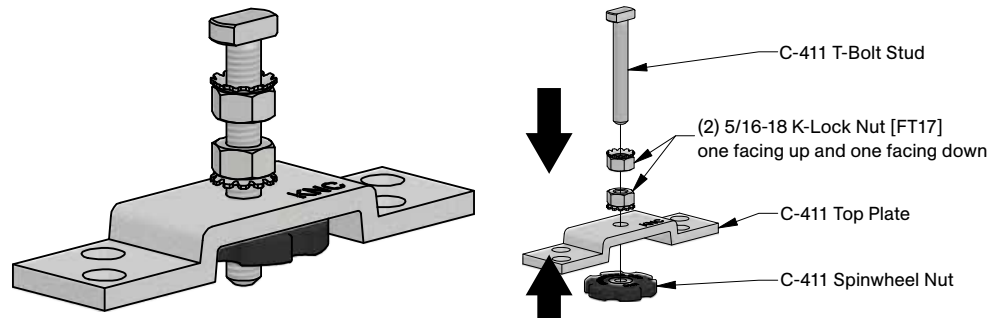
Step #4:

Locate center of clearance hole/top plate on top of each door and drill a $\varnothing 1/2$ in [12.7 mm] clearance hole at least 2 in [50.8 mm] deep as shown.



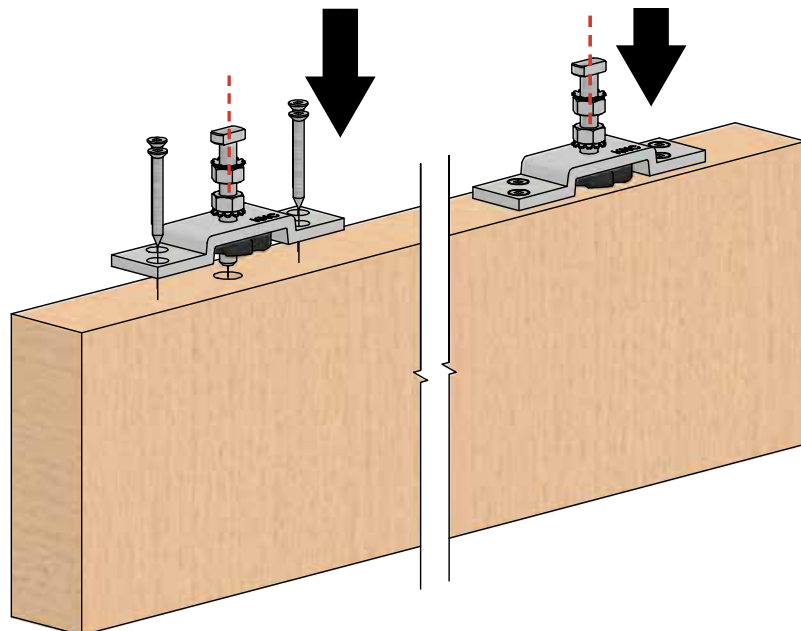
Step #5:

Assemble C-411 Top Plate assemblies as shown, 4 assemblies required.



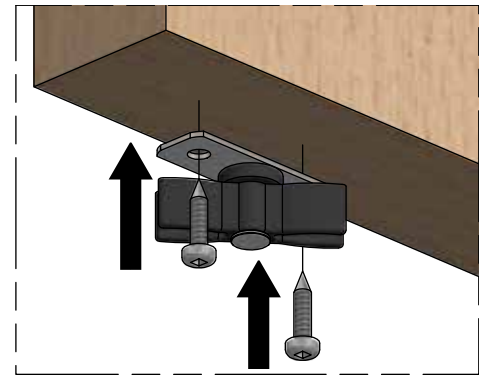
Step #6:

Place assemblies from step #5 on top edge of each door with t-bolt placed into clearance hole. Mark screw hole locations and pre-drill $\varnothing 1/8$ in [3.2 mm] holes at least 1 1/2 in [38.1 mm] deep. Secure with (4 per hanger) #10 x 1-3/4" Flathead Screws [FT9].



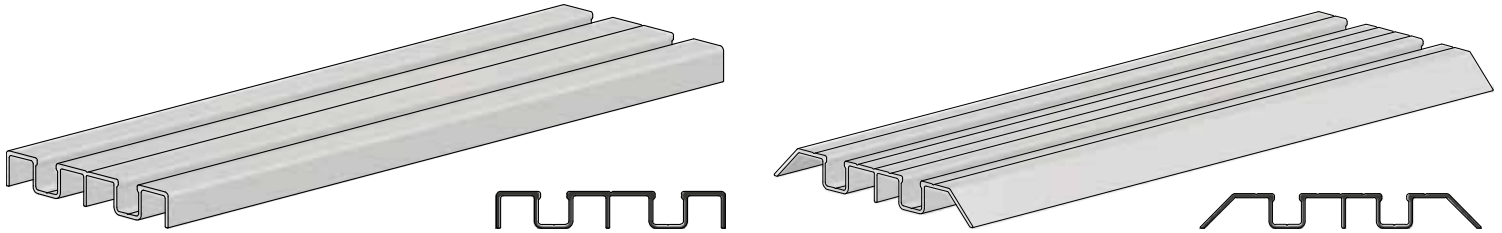
Step #7:

Mount two (2) C-200 Guides to bottoms of each door with (2 each guide) #8 x 3/4" Pan Head Screws [FT2]. It is recommended to mount guides at least 2 in [50.8 mm] from each edge of door.

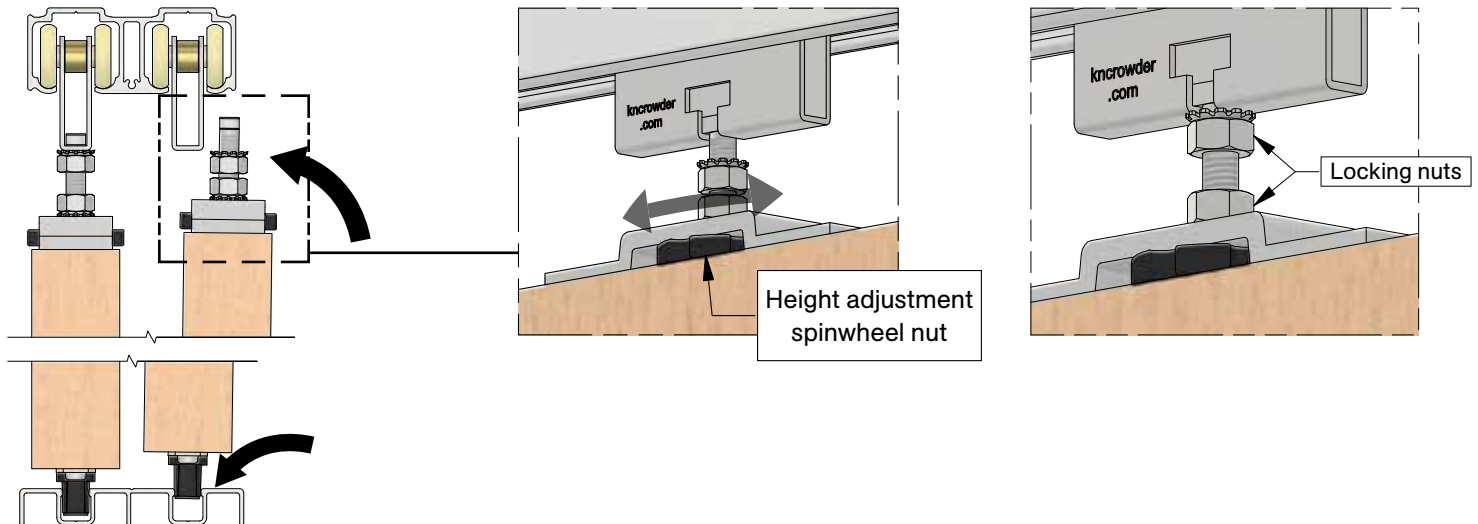
**Step #8:**

Cut C-238 or C-238S aluminum guide threshold to size as required, typically same length as track from **step #2**. Position guide threshold on floor or recessed in floor to line up with C-538 Track above.

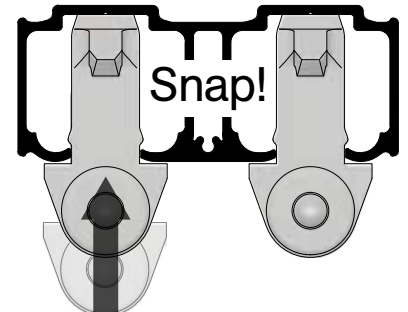
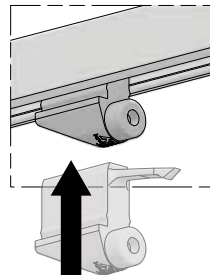
Note: The center lines of grooves in guide threshold should line up with center lines of track above.

**Step #9:**

Raise door under C-411 Hanger Bodies in track and position guides into guide threshold. Lift door up and engage t-bolt with t-slot on C-411 Hanger Bodies. Adjust door height and plumb using spinwheel nuts on top plate assembly lock final height adjustment with 5/16-18 K-Lock Nuts [FT17] using 1/2 in wrench. Repeat for front door.

**Step #10:**

After doors have been installed, snap CDC-411 Catch/Stops into each end of track with bumpers facing towards center of track. Once snapped into track, CDC-411 Catch/Stops should be free to slide within track.



Step #11:

Position door approximately 5-10 in [127-254 mm] away from final position at one end, shown below with left side. Push loose CDC-411 Catch/Stop against hanger and engage it with hanger, bumper should be against hanger body.

**Step #12:**

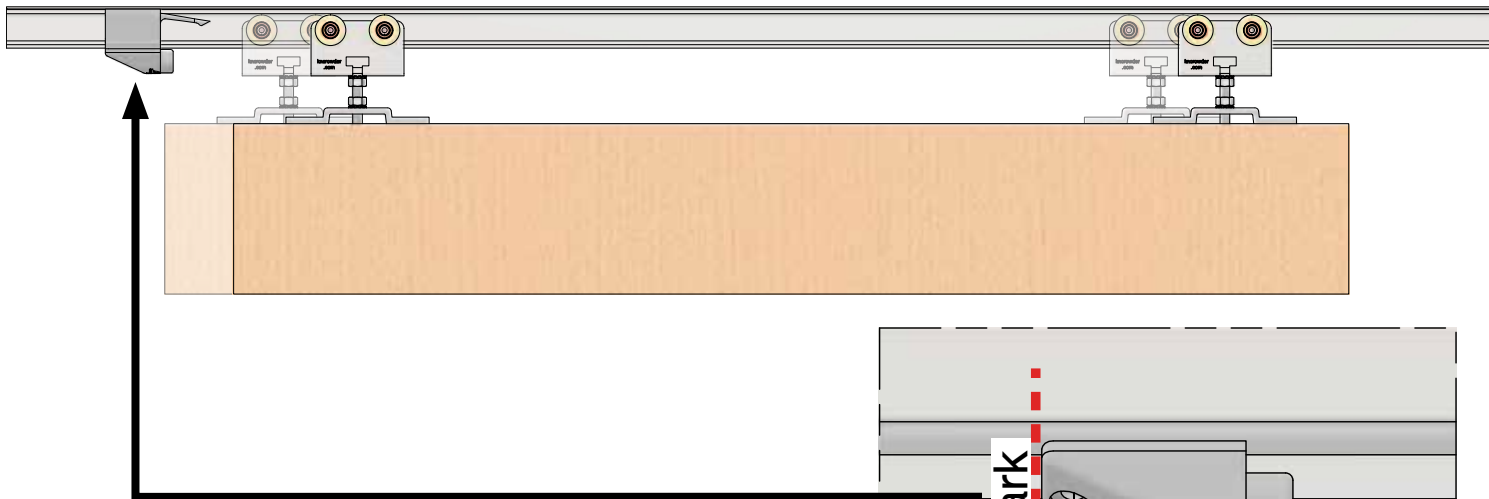
With CDC-411 Catch/Stop loose, slide door to final/desired position of door.

Note: Ensure that strike and trim thickness are taken into consideration for final/desired position of door.

**Step #13:**

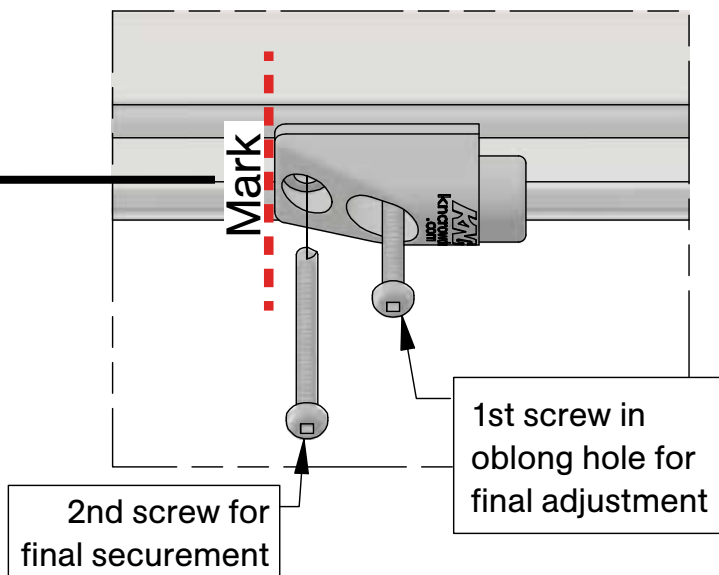
Once final position is achieved, mark outside edge of CDC-411 Catch/Stop as shown below, disengage CDC-411 Catch/Stop from hanger and slide door back. Position CDC-411 Catch/Stop at mark and secure with one (1) #10 x 2-1/4" Self-Drilling Screw [FT6] in oblong hole. Recheck door position and adjust CDC-411 Catch/Stop if necessary before securing in second hole with #10 x 2-1/4" Self-Drilling Screw [FT6].

Note: Remove any drill fillings from inside of track as this will affect operation of sliding door system.

**Step #14:**

Repeat steps #11 - 13 for opposite and other CDC-411 Catch/Stops.

Note: Ensure that strike and trim thickness are taken into consideration for where door will be in final position.



Optional C-521 Fascia Installation

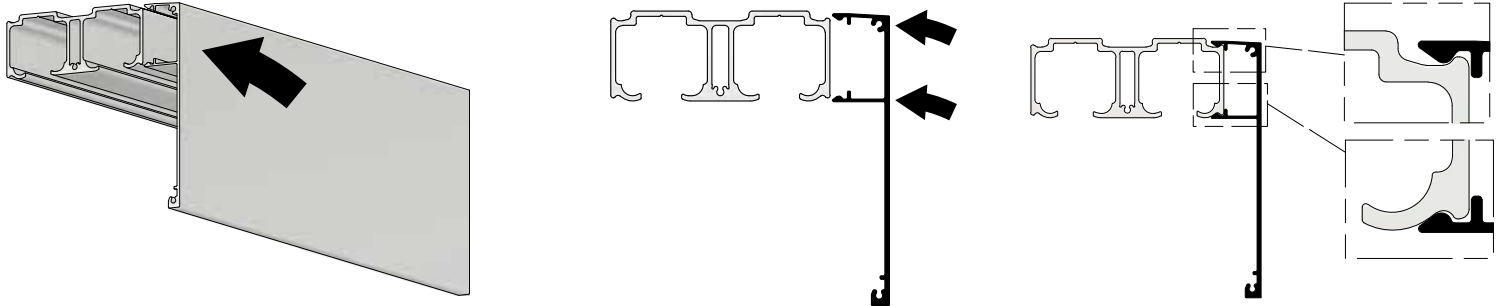
Step #F1:

Cut C-521 Fascia to correct length as required. Typically, fascia is same length as track previously installed.

Step #F2:

Lift fascia up to track and snap on as shown.

Note: If fascia is loose and a tighter fit is desired, use a rubber mallet on inside leg of fascia to reduce gap at +/-24 in [610 mm] intervals.



Top Plate Template

