

# C-61 Edge Pull Only

Installation Instructions

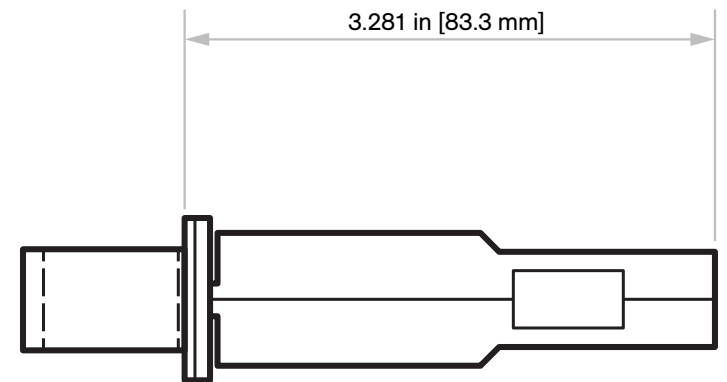
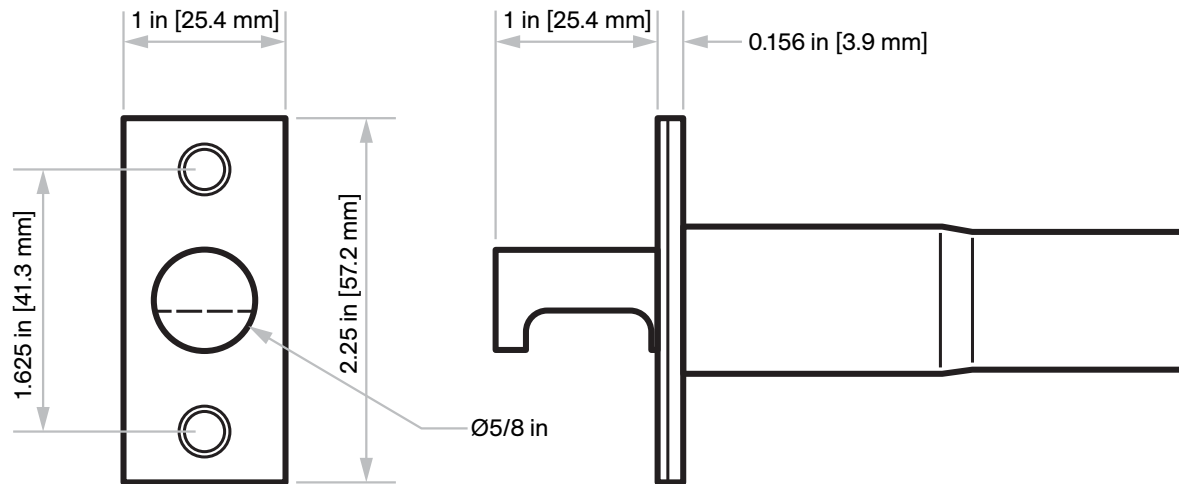
Suitable for 1 3/4 in [44.4 mm] or 1 3/8 in [34.9 mm] thick doors.

Spring Loaded Edge Pull

Can be used with a privacy set.

Not to scale

**KNC**  
Door Locks & Pulls

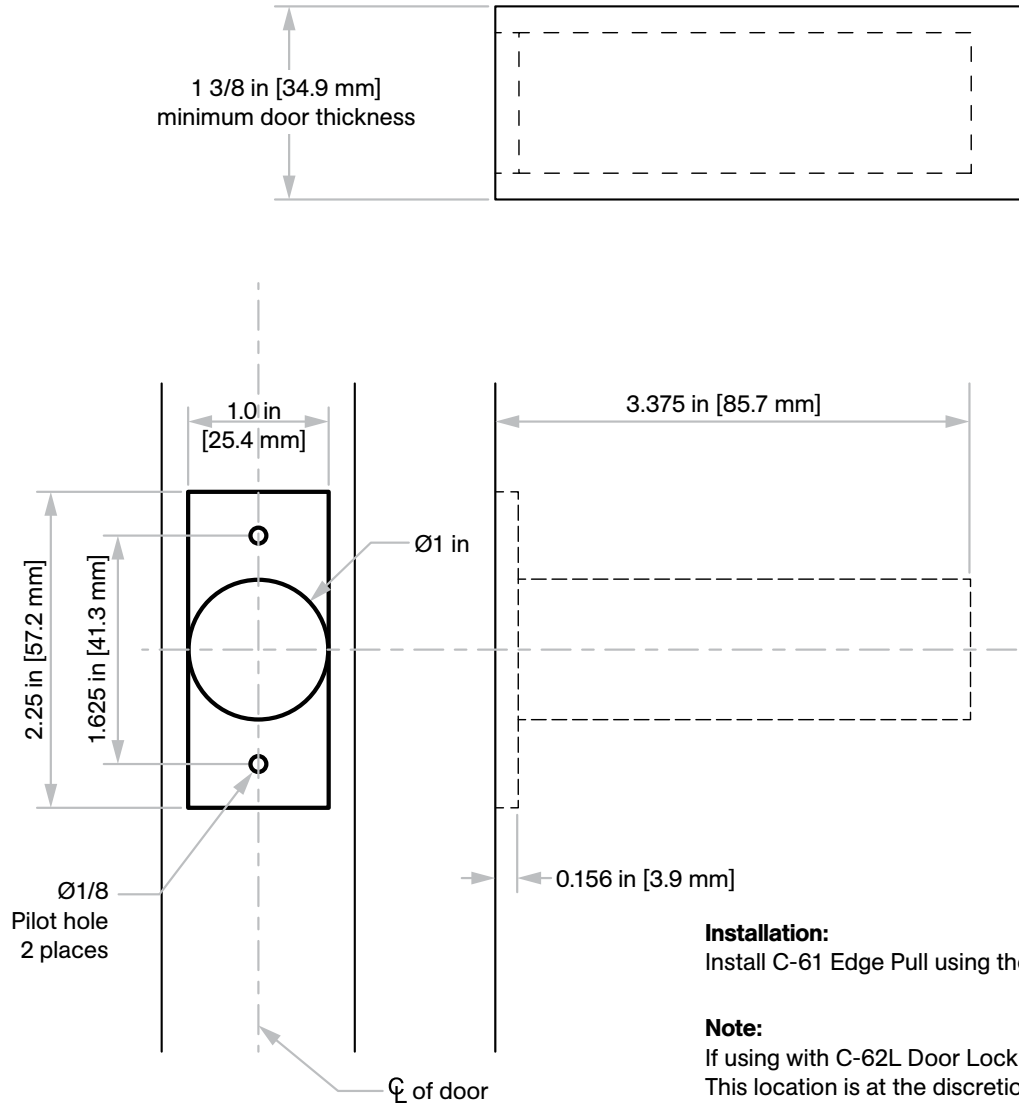


# Door Prep Template

## Responsibility:

Door and frame manufacturers are responsible for providing adequate construction or reinforcement for proper installation of hardware shown.

Not to scale



## Installation:

Install C-61 Edge Pull using the (2) #8 screws provided.

## Note:

If using with C-62L Door Lock, typically the C-61 Edge Pull is mounted below the C-62L. This location is at the discretion of the end user.

# C-62L-SET Lockset

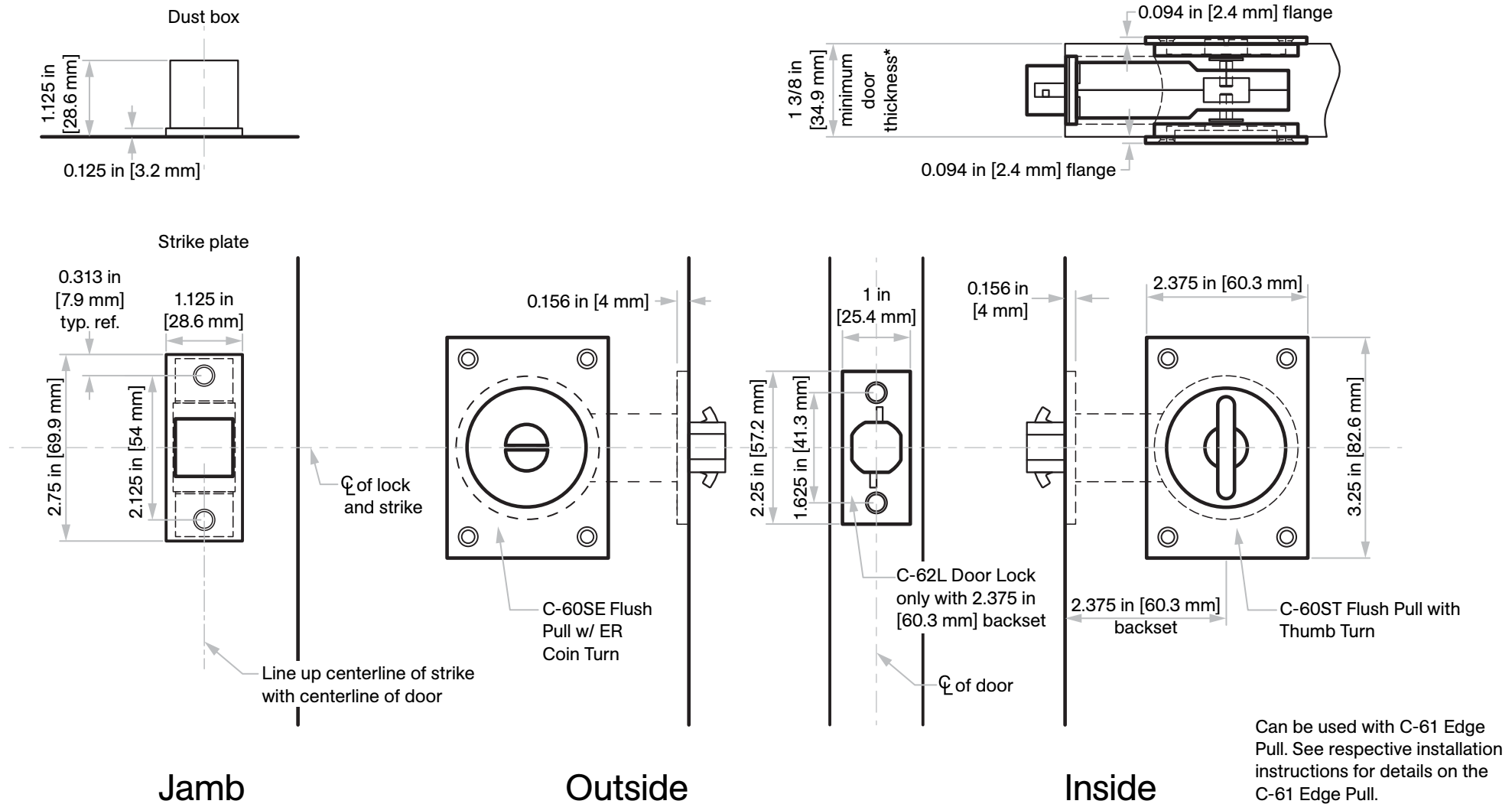
## c/w C-60SE & C-60ST Square Flush Pulls

Installation Instructions

**Not to scale**

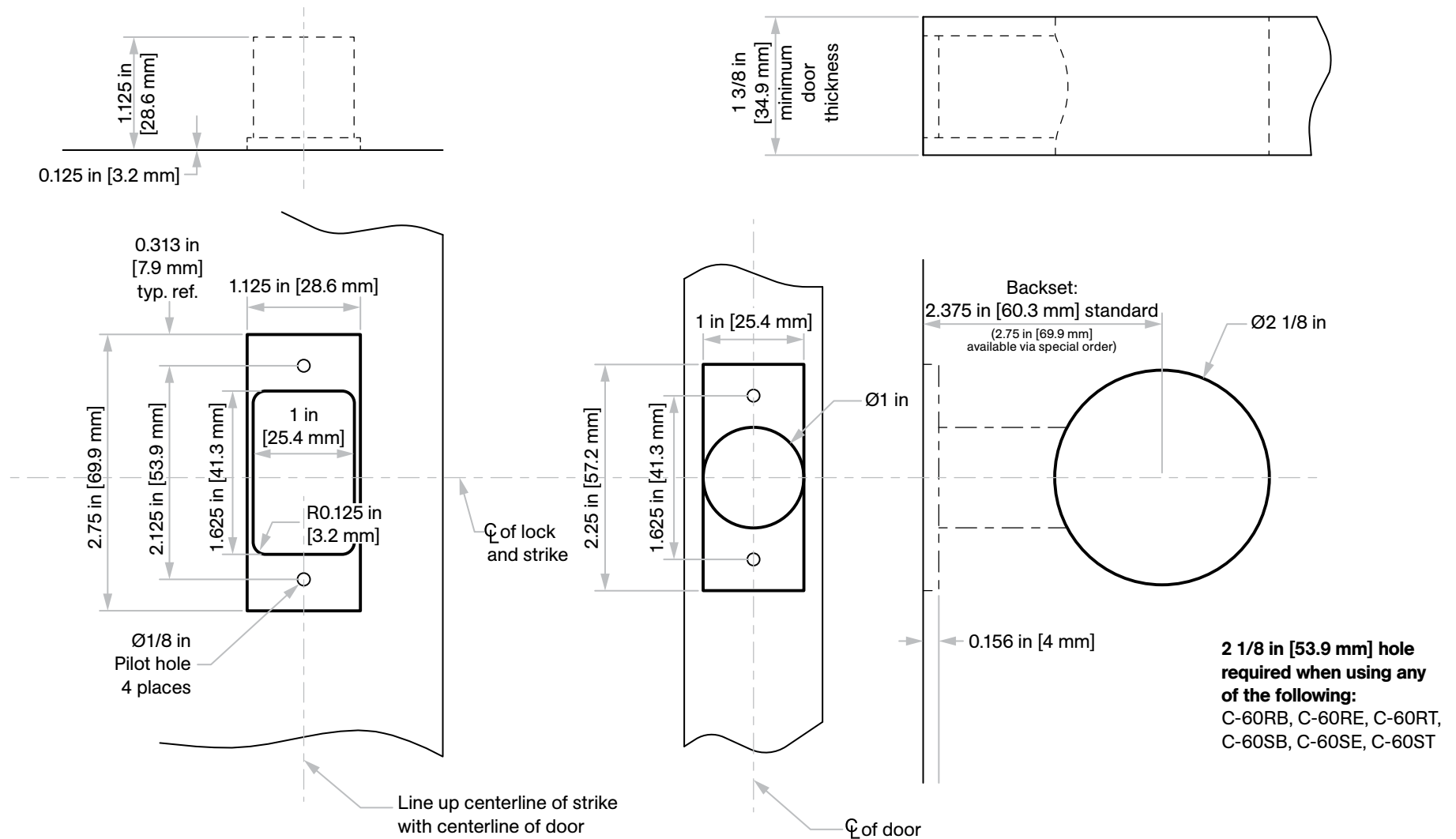
**Suitable for 1 3/8 in [34.9 mm]\* and 1 3/4 in [44.4 mm] thick doors**

For other door thicknesses, please contact Customer Service. \*To use the C-60SE & C60ST flush pulls on a 1 3/8 in [34.9 mm] thick door, the thru-bolted post on each flush pull are supplied with a notch that allows for shortening its length for 1 3/8 in [34.9 mm] thick doors. Twist off or cut with hack saw.



# Door Prep Template

Not to scale



## Responsibility:

Door and frame manufacturers are responsible for providing adequate construction or reinforcement for proper installation of hardware shown.

## Installation:

Install C-62L Lock & Strike plate, and C-60SE & C-60ST using the (12) #8 screws provided.