

C-94BL-HL Privacy Barn Door Lockset

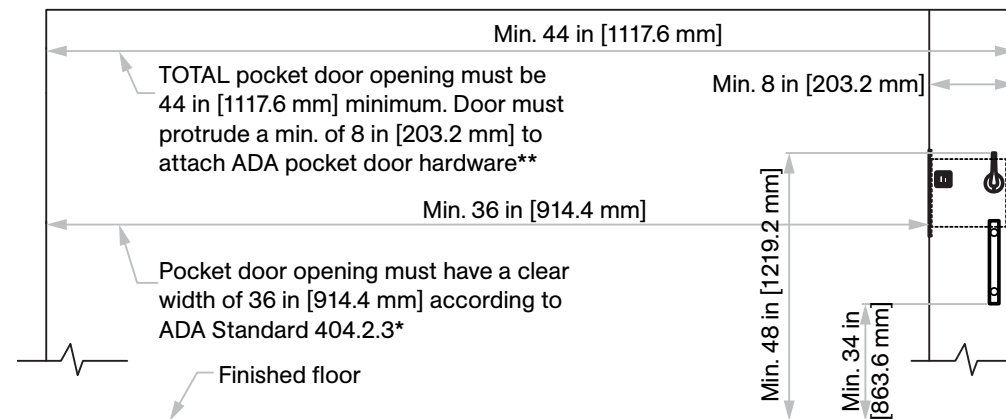
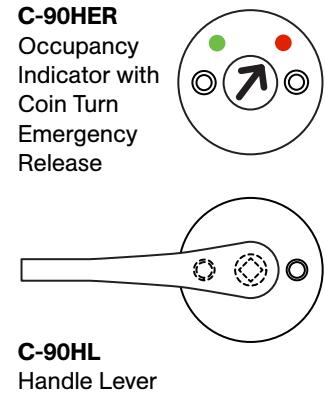
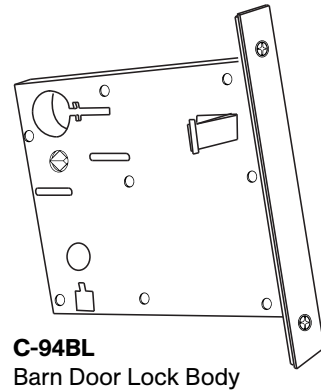
Barrier-Free (ADA Compliant)

Installation Instructions

Specifications

- Case:** Heavy gauge wrought
- Armor Front:** Brass, bronze, stainless
- Cam:** See details on right
- Door Thickness:** 1 3/4 in [44.5 mm]

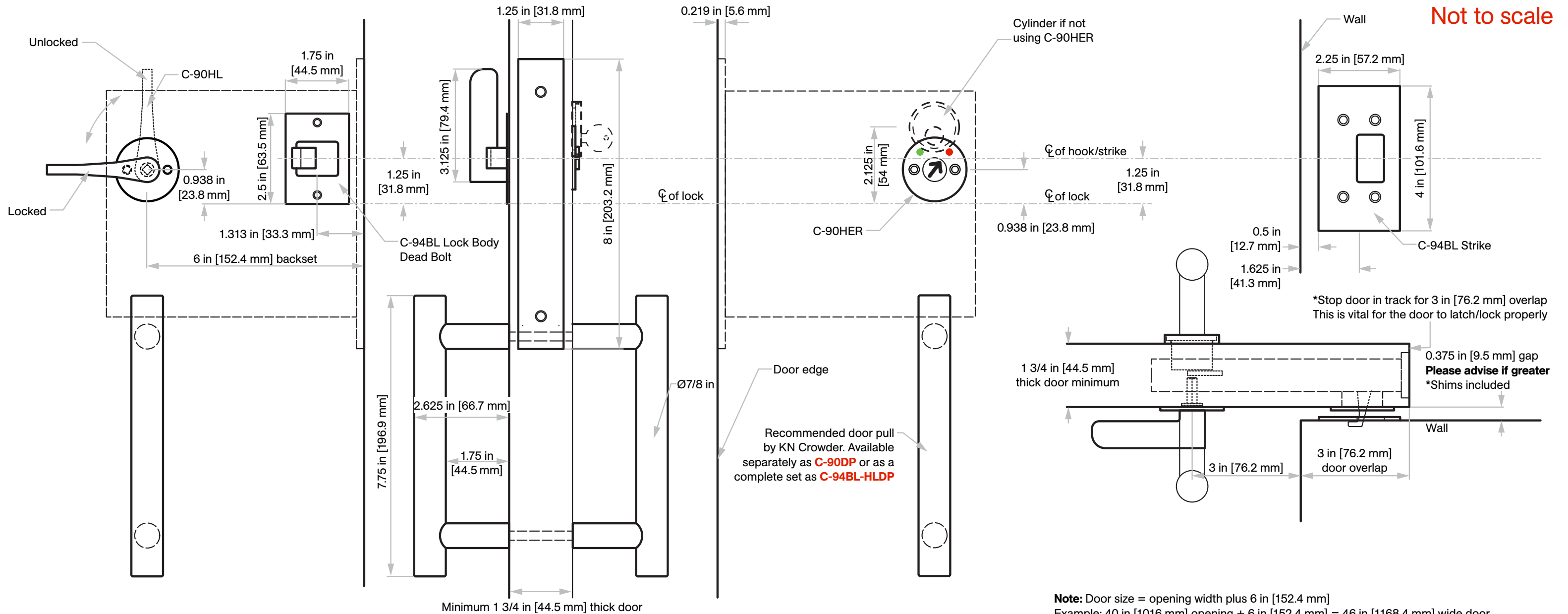
Included Components



The ADA Standard 404.2.3 is from the Dept. of Justice ADA Publication of Sept 15, 2010. KN Crowder encourages the end user to double check all state and federal standards for your particular project.

**The total opening has to be 8 in [203.2 mm] minimum greater than the federal "clear width" dimension of 36 in [914.4 mm] to work properly.

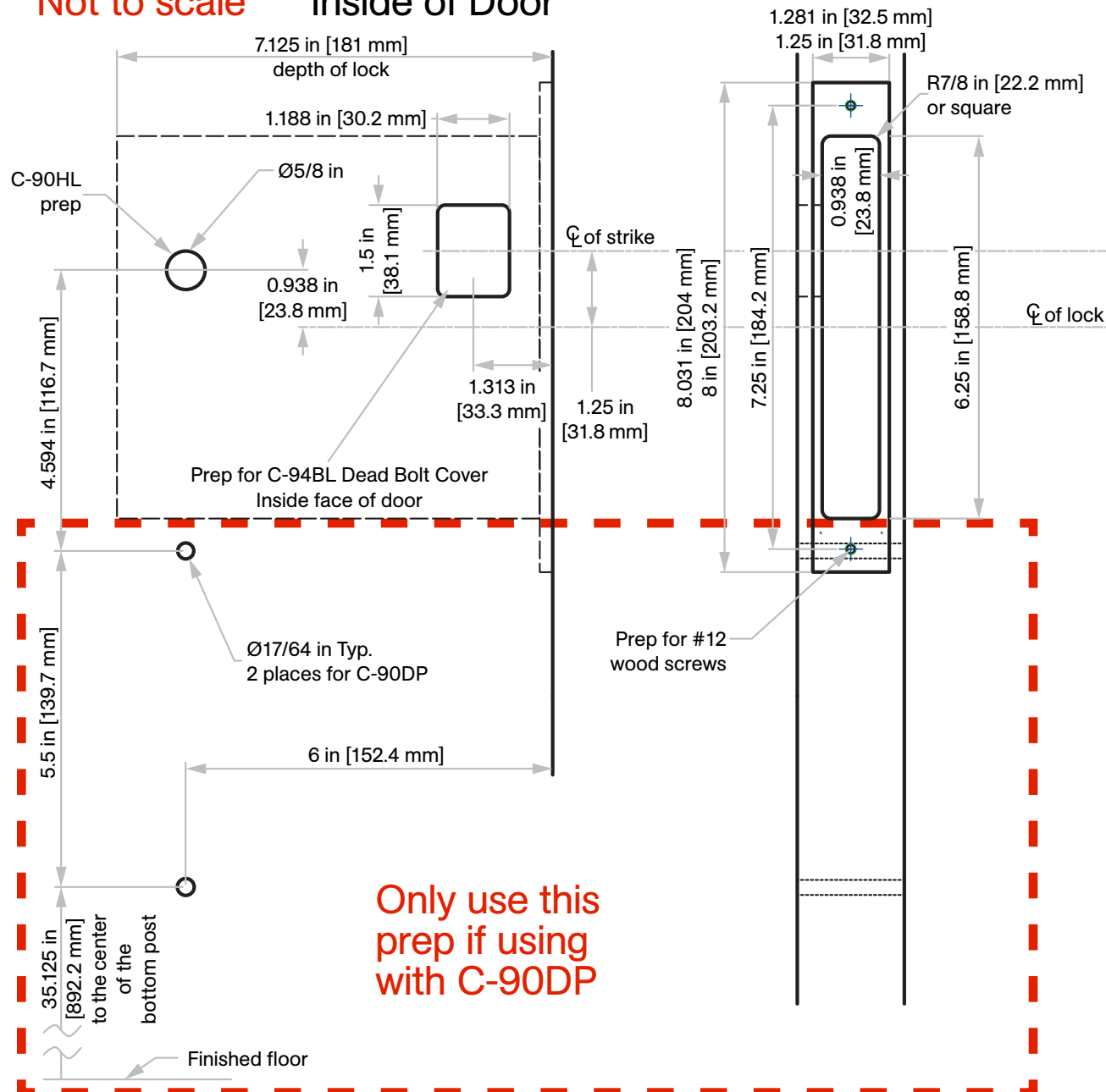
***The bottom of the C-90DP pulls must be installed 34 in [863.6 mm] from the finished floor. This will give 48 in [1219.2 mm] from the finished floor to the top of the C-90HL handle, thus meeting Code 404.2.7.



Note: Door size = opening width plus 6 in [152.4 mm]
Example: 40 in [1016 mm] opening + 6 in [152.4 mm] = 46 in [1168.4 mm] wide door

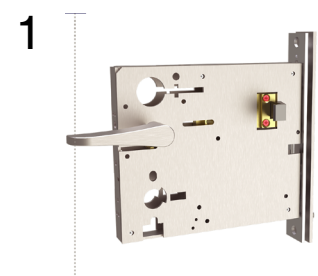
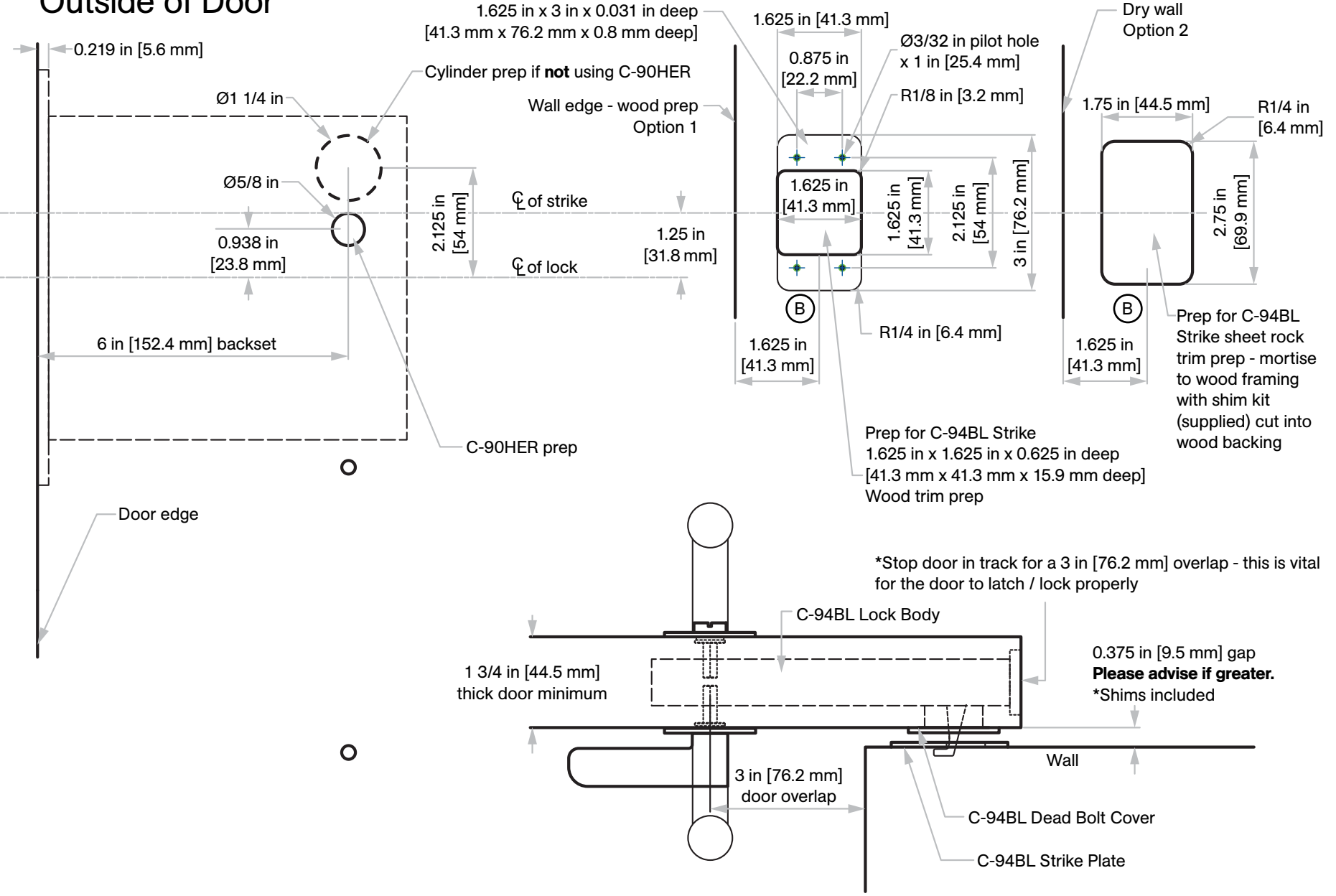
Door Prep Template

Not to scale Inside of Door



Only use this prep if using with C-90DP

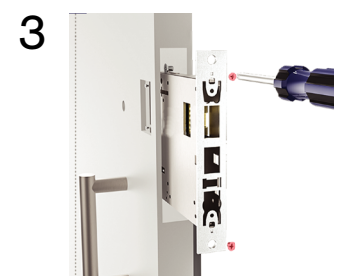
Outside of Door



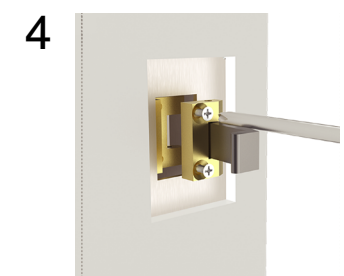
1 Expose screws
Rotate thumb turn 90 degrees to project bolt and expose the two bolt screws



2 Remove bolt from lock body
Extend the bolt and loosen screws without removing them and remove bolt assembly from the lock



3 Insert lock into door
Insert lock into door
Loosen insert mounting screws



4 Reattach bolt
Slightly rotate loose thumb turn to make lock body screws visible
Reinstall bolt assembly by aligning screw holes
Tighten screws
Use thumb turn to fit bolt assembly back in



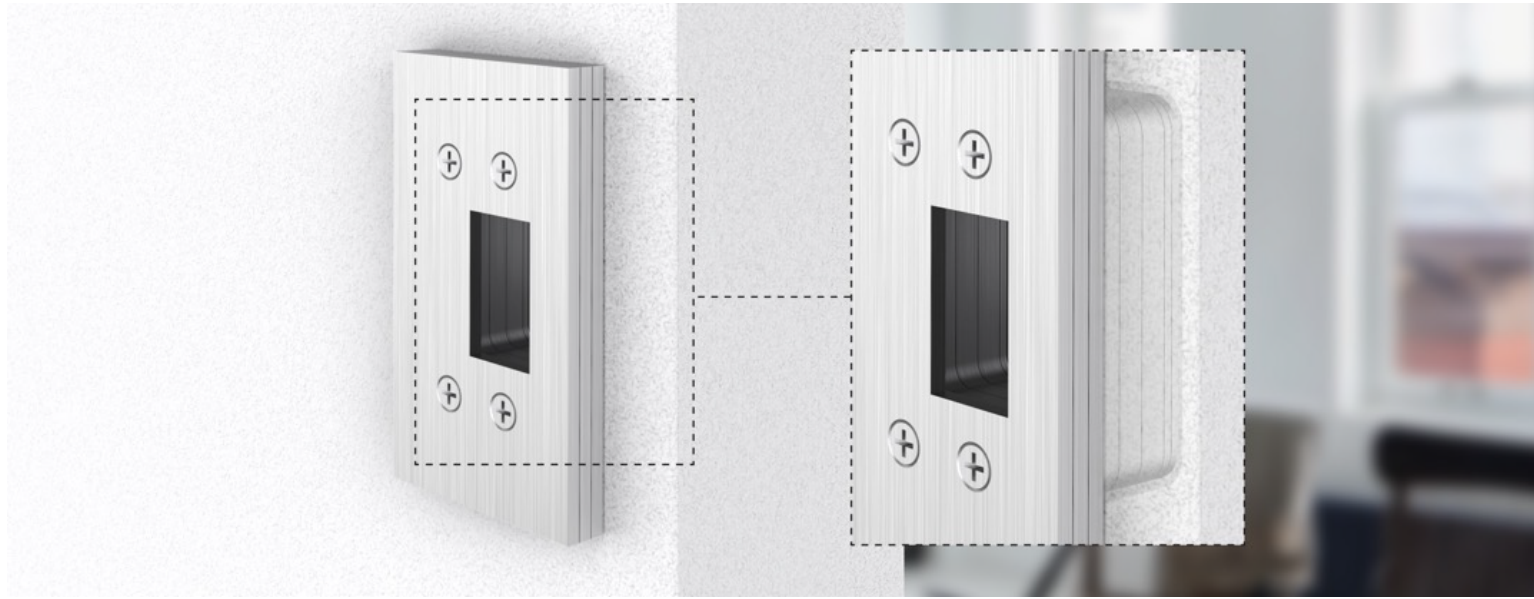
5 Install armour front
Secure lock in door by tightening screws into door
Install armour front onto base front



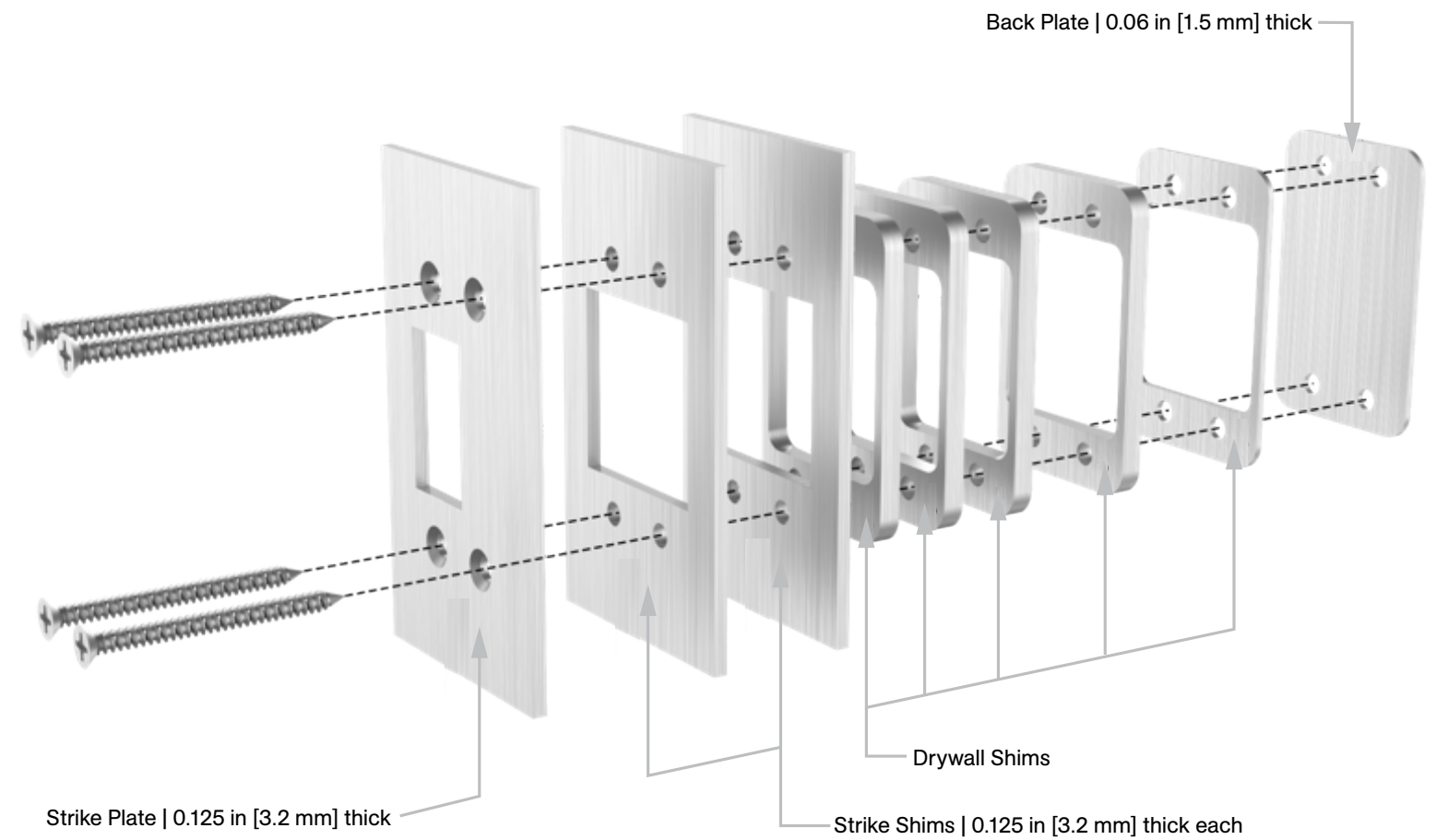
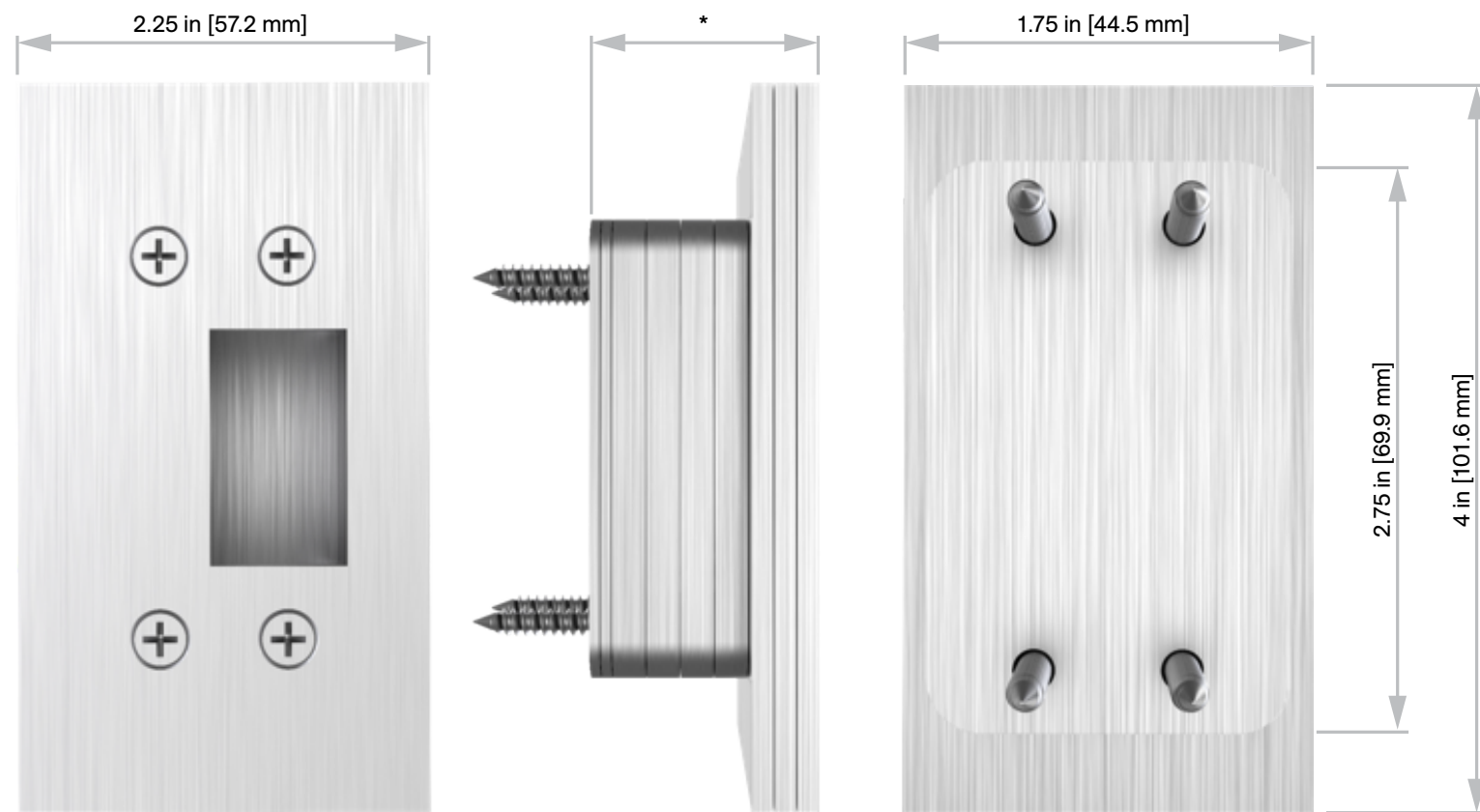
6 Mount cuff
Mount the bolt cuff aligning per template
Install trim accordingly

Strike Kit

Supplied Standard



Not to scale



Number of drywall shims used is a function of drywall thickness.

Number of strike shims used is a function of the gap between the face of the door and the wall.