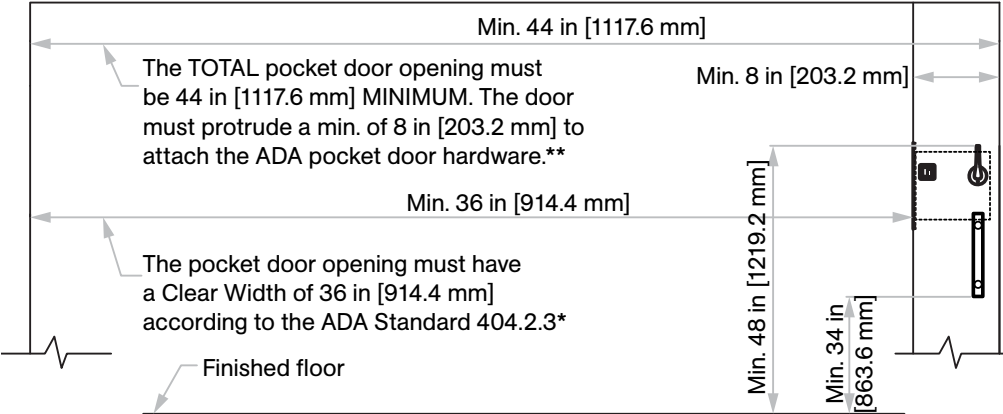


# C-94BL-HL Handicap Lockset

Barrier-Free (ADA Compliant)

Installation Instructions

For 1 3/4 in [44.5 mm] thick doors only

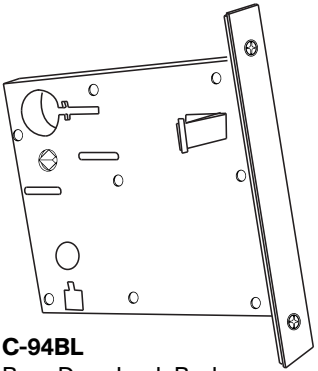


\*The ADA Standard 404.2.3\* is from the Dept. of Justice ADA Publication of Sept 15, 2010. K.N. Crowder Mfg. Inc. encourages the end user to double check all state and federal standards for your particular project.

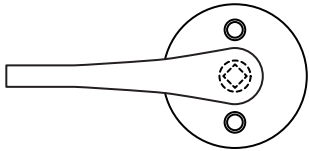
\*\*The total opening has to be 8 in [203.2 mm] minimum greater than the federal "clear width" dimension of 36 in [914.4 mm] to work properly.

\*\*\*The bottom of the C-90DP pulls must be installed 34 in [863.6 mm] from the finished floor. This will give 48 in [1219.2 mm] from the finished floor to the top of the C-90HL handle, thus meeting Code 404.2.7.

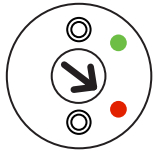
## Components Included:



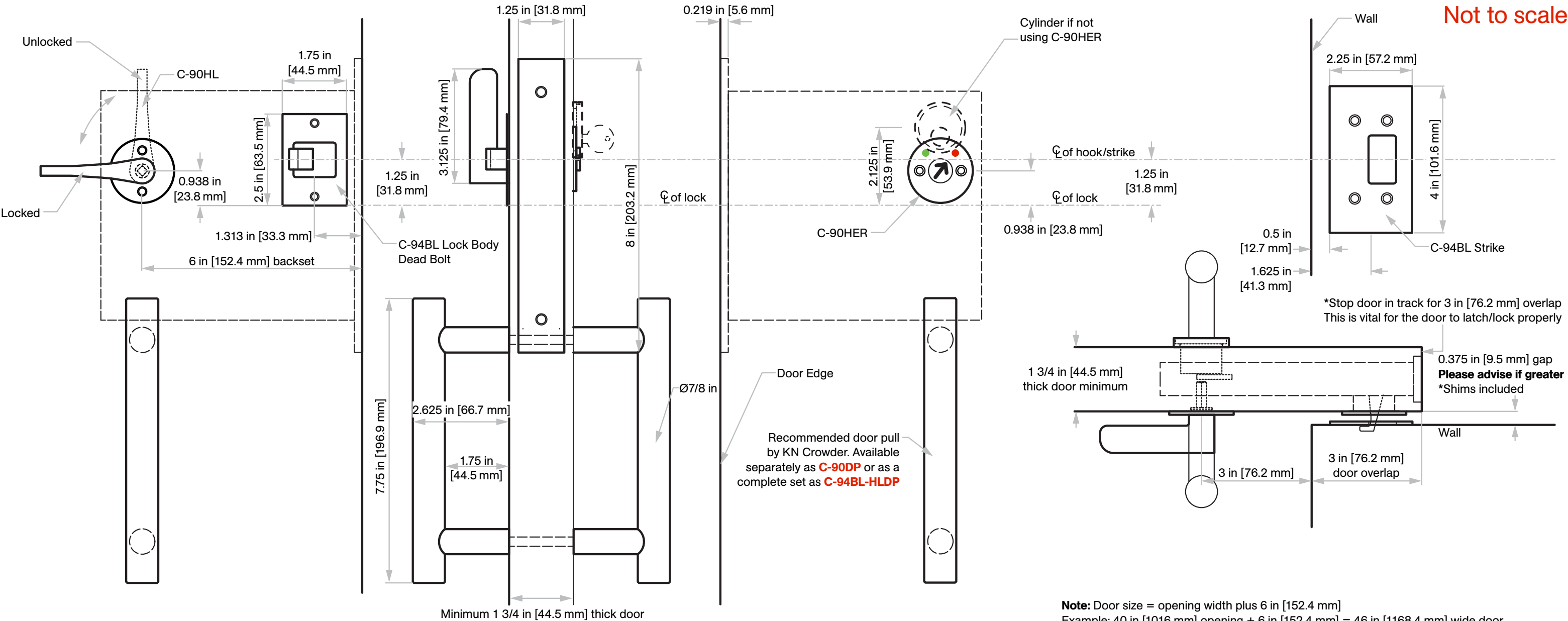
**C-94BL**  
Barn Door Lock Body



**C-90HL**  
Handle Lever



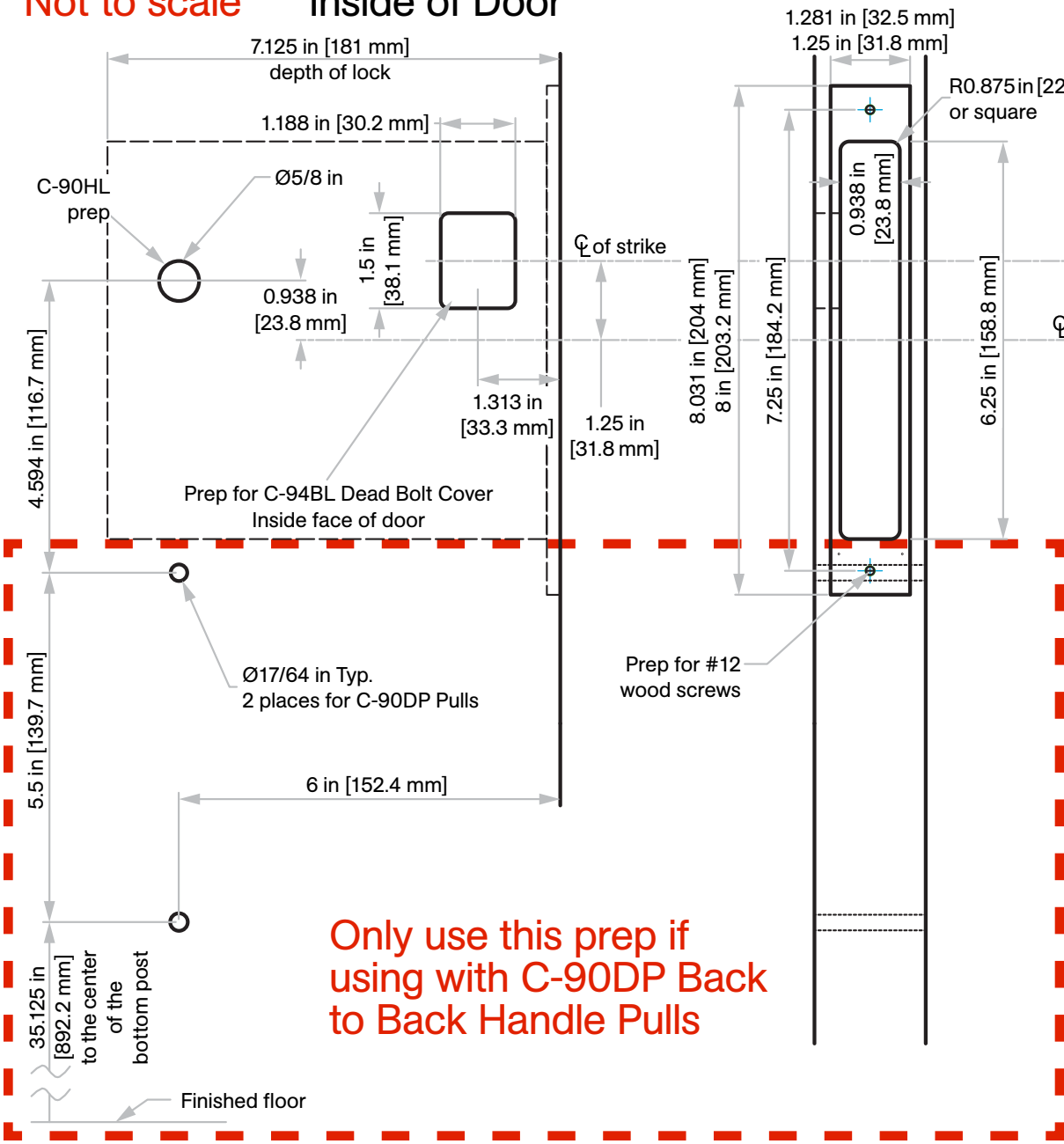
**C-90HER**  
Occupancy Indicator ER Coin Turn



**Note:** Door size = opening width plus 6 in [152.4 mm]  
Example: 40 in [1016 mm] opening + 6 in [152.4 mm] = 46 in [1168.4 mm] wide door

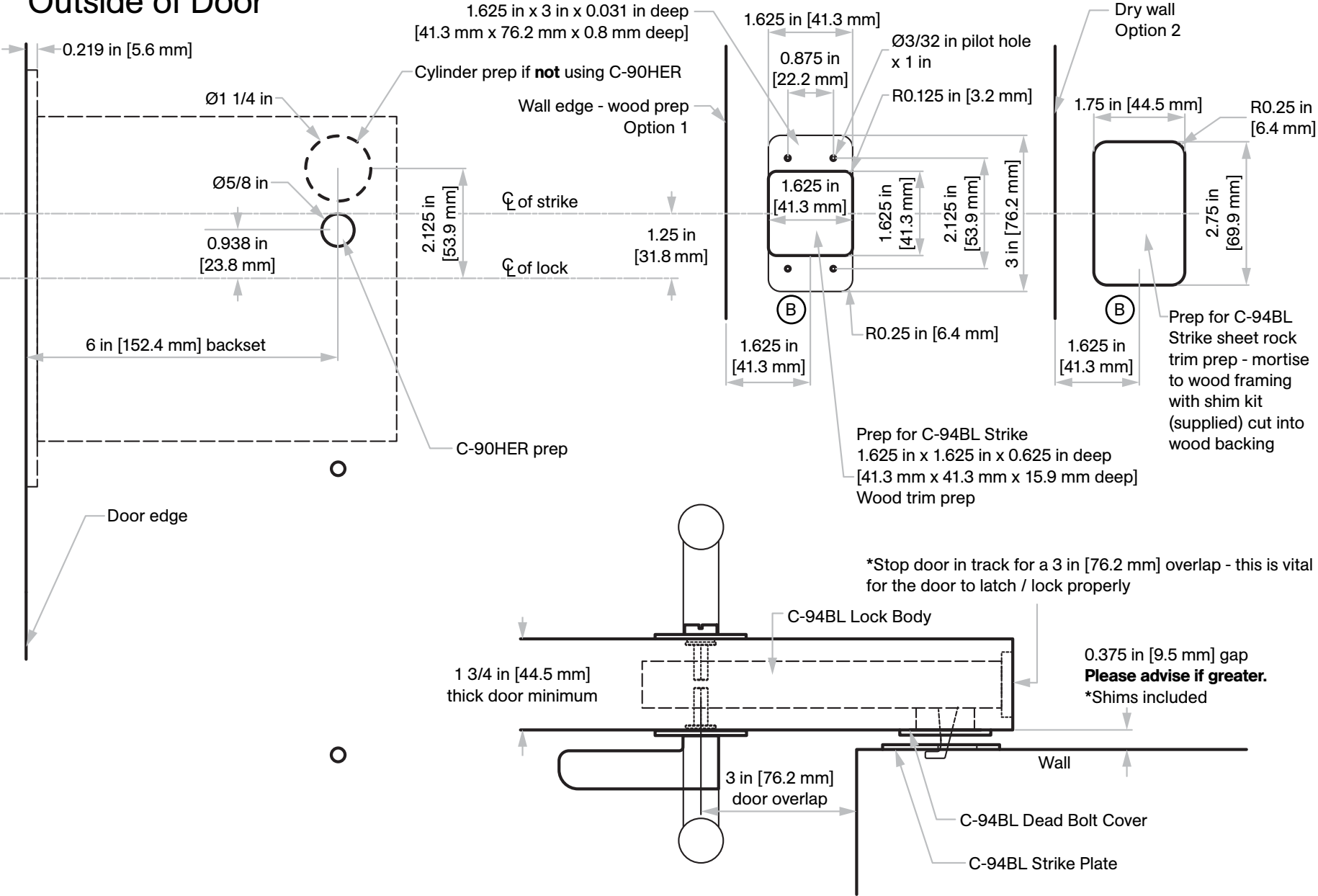
# Door Prep Template

Not to scale Inside of Door



Only use this prep if using with C-90DP Back to Back Handle Pulls

Outside of Door



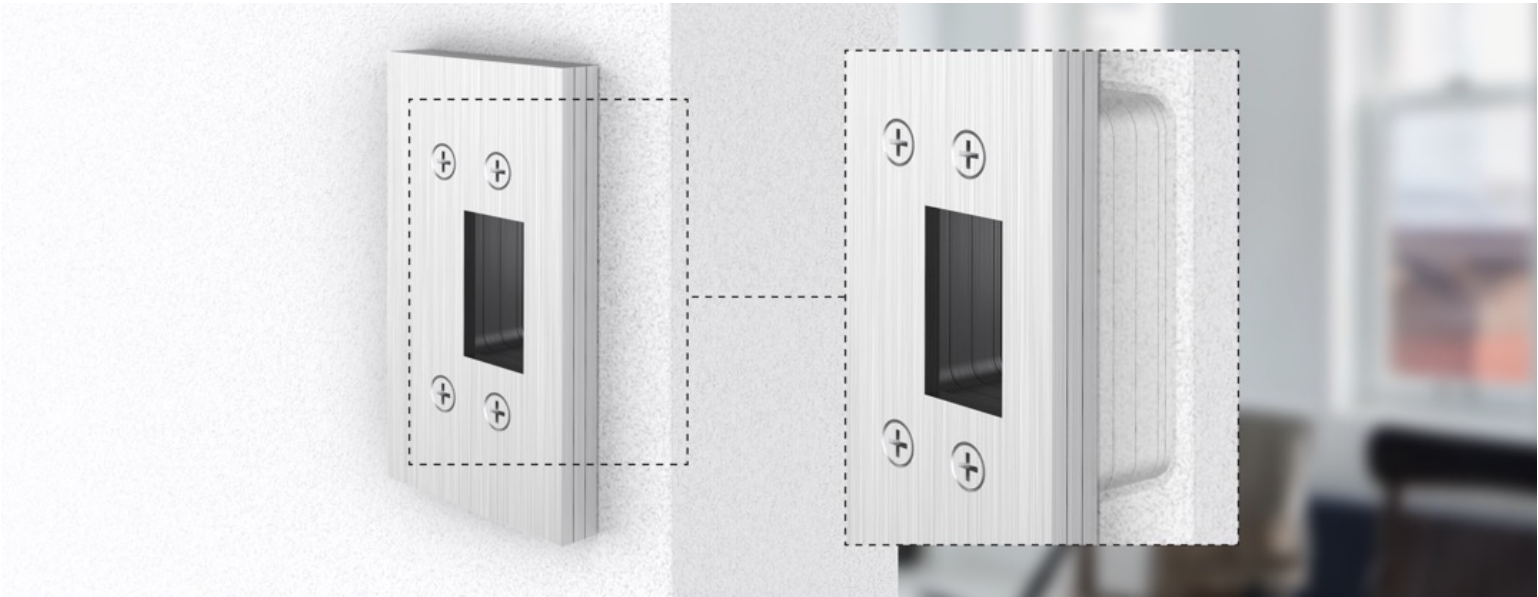
- Expose Screws**  
Rotate thumb turn 90 degrees to project bolt and expose the two bolt screws
- Remove Bolt from Lock Body**  
Extend the bolt and loosen screws without removing them and remove bolt assembly from the lock
- Insert Lock into Door**  
Insert lock into door  
Loosen insert mounting screws



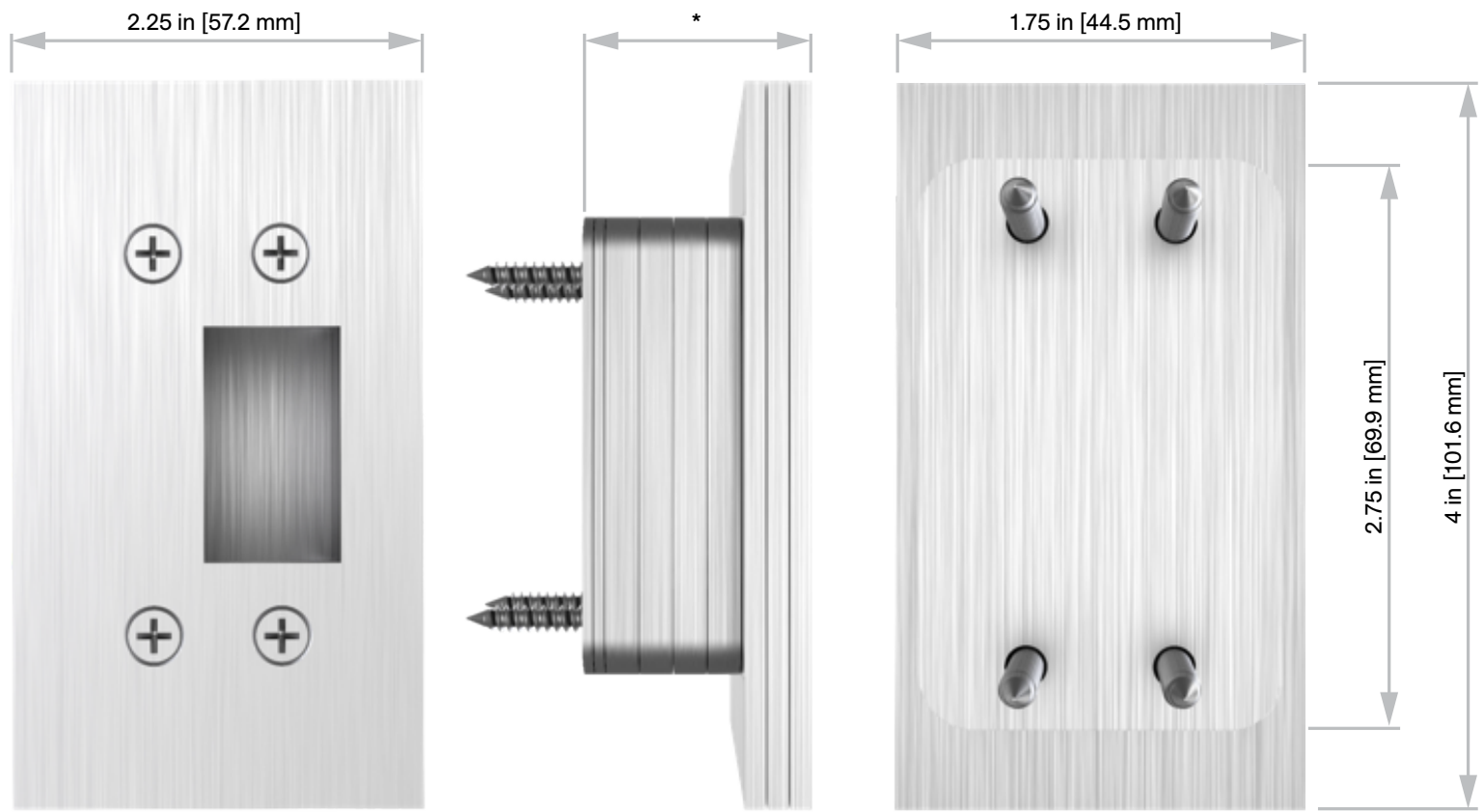
- Reattach Bolt**  
Slightly rotate loose thumb turn to make lock body screws visible  
Reinstall bolt assembly by aligning screw holes  
Tighten screws  
Use thumb turn to fit bolt assembly back in
- Install Armour Front**  
Secure lock in door by tightening screws into door  
Install armour front onto basefront
- Mount Cuff**  
Mount the bolt cuff aligning per template  
Install trim accordingly

# Strike Kit

Supplied Standard



Not to scale



Number of drywall shims used is a function of drywall thickness.  
Number of strike shims used is a function of the gap between the face of the door and the wall.

