

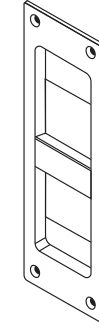
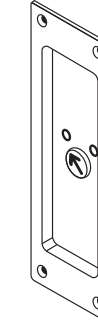
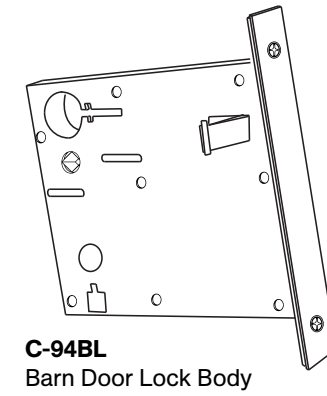
# C-94BL-OT Privacy Lockset

Installation Instructions

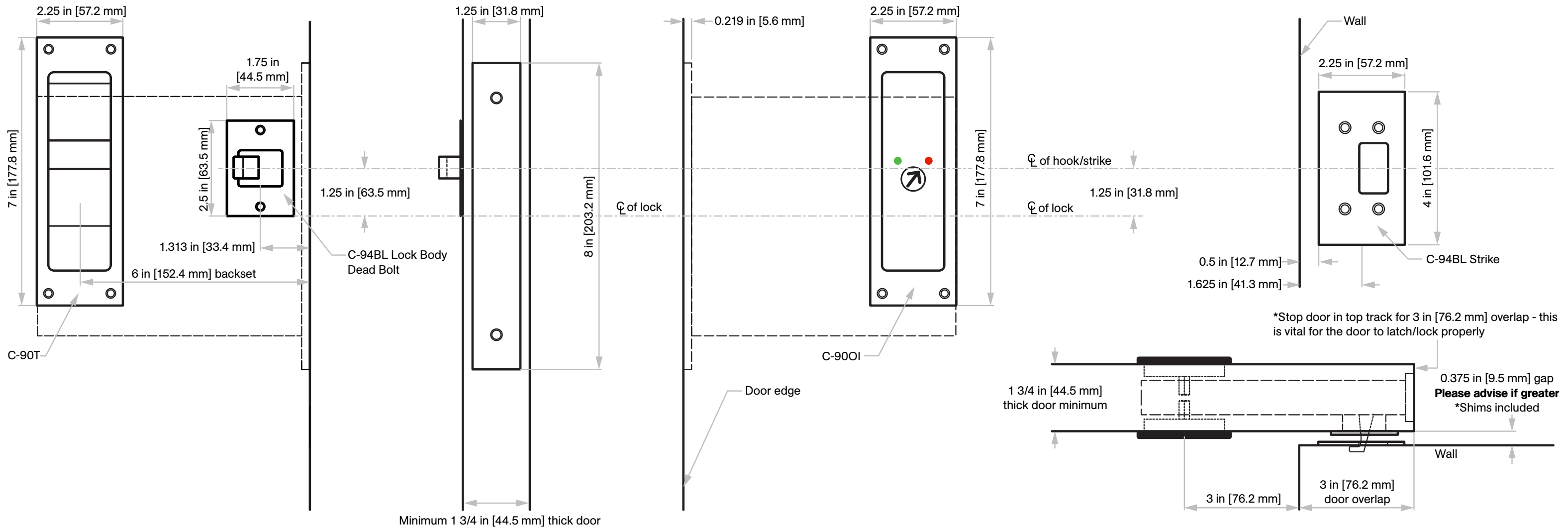
## Specifications

**Case:** Heavy gauge wrought  
**Armor Front:** Brass, bronze, stainless  
**Cam:** See details on right  
**Door Thickness:** 1 3/4 in [44.5 mm]

## Included Components



Not to scale

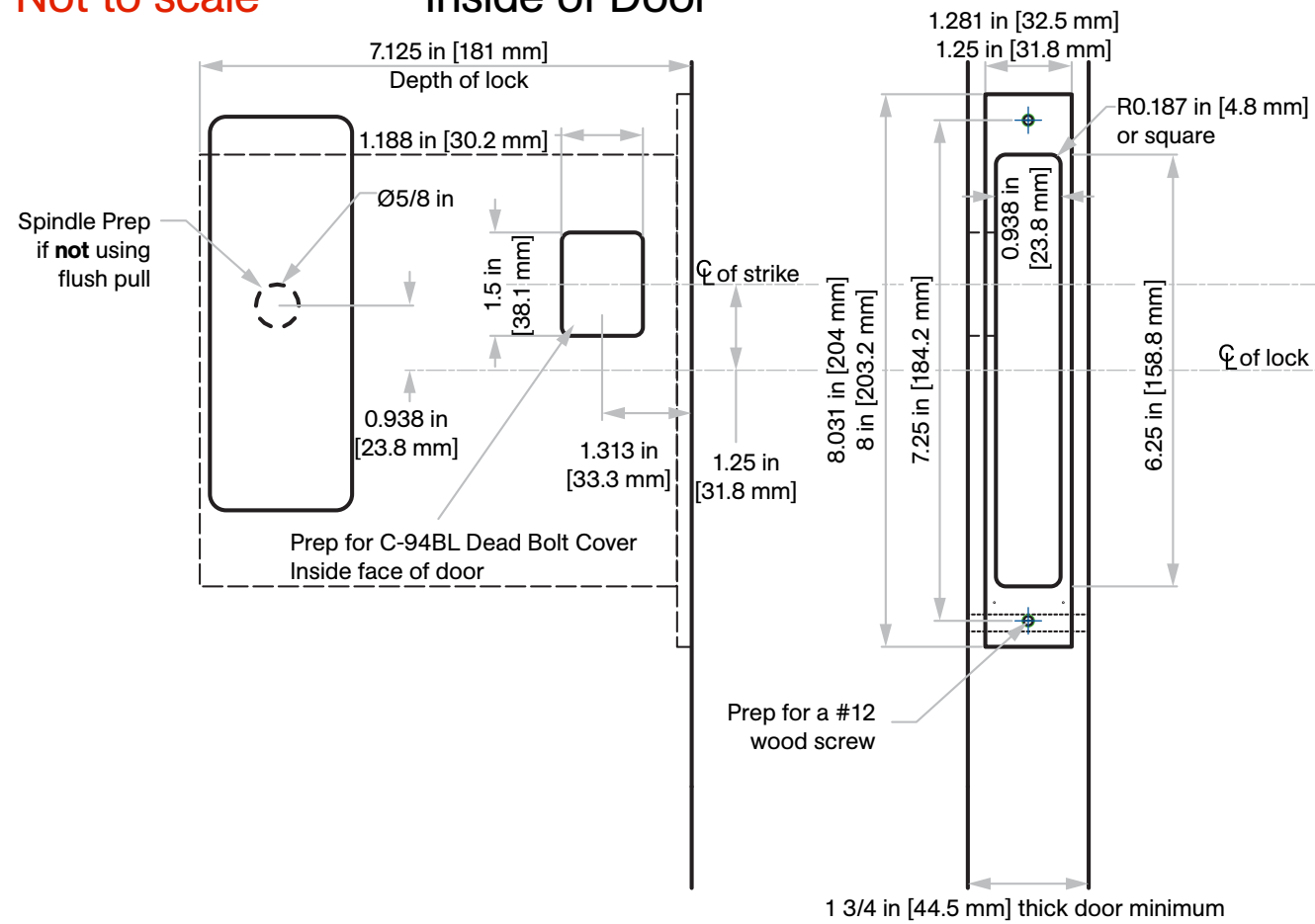


**Note:** Door size = opening width plus 6 in [152.4 mm]  
 Example: 40 in [1016 mm] opening + 6 in [152.4 mm] = 46 in [1168.4 mm] wide door

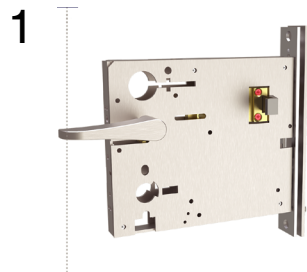
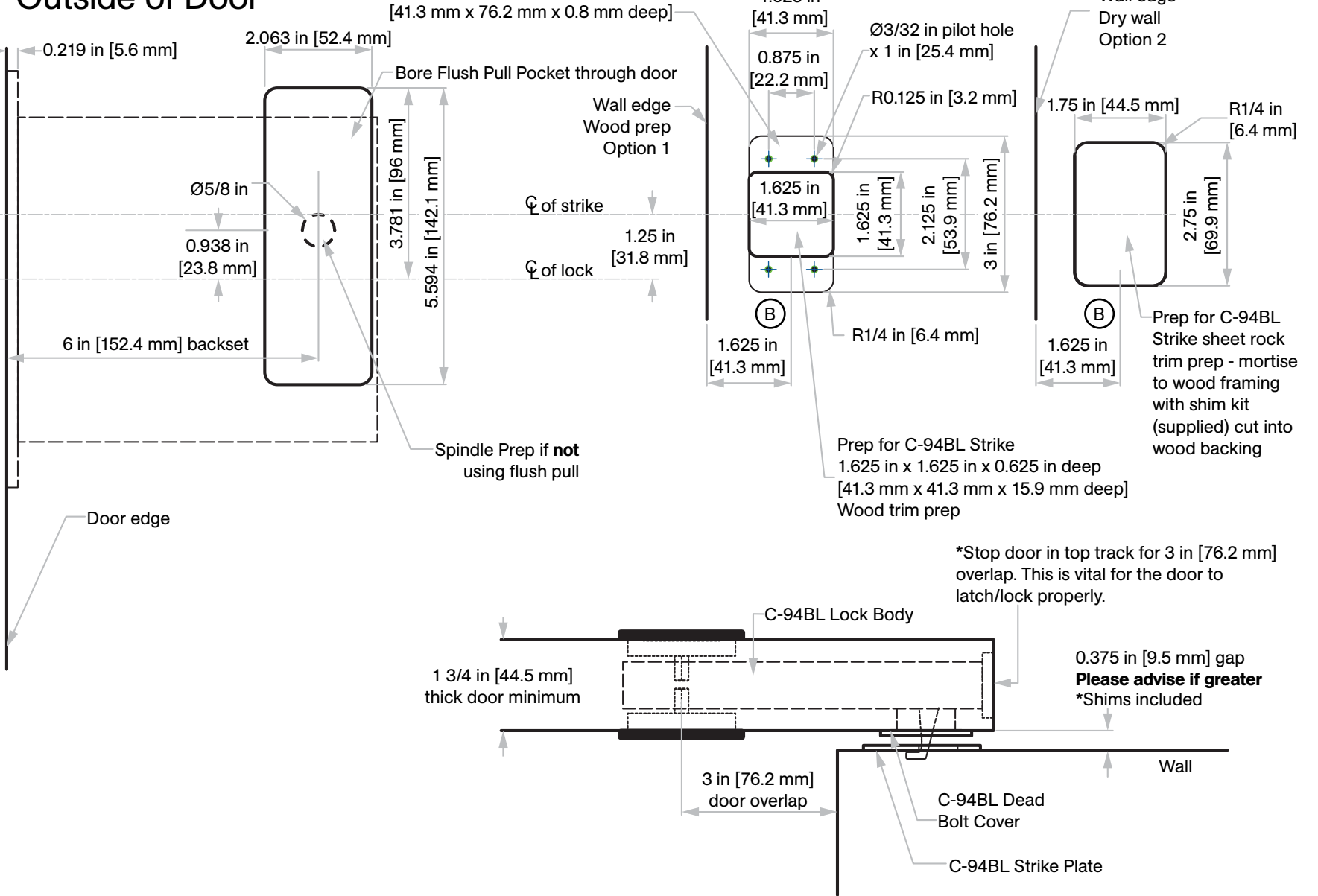
# Door Prep Template

Not to scale

## Inside of Door



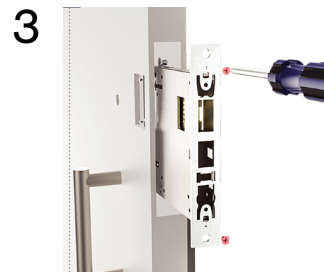
## Outside of Door



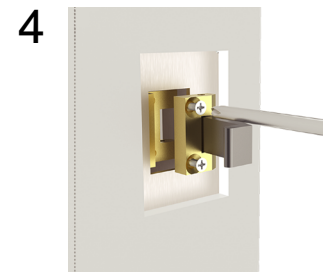
**1 Expose screws**  
Rotate thumb turn 90 degrees to project bolt and expose the two bolt screws



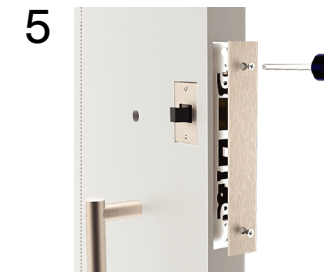
**2 Remove bolt from lock body**  
Extend the bolt and loosen screws without removing them and remove bolt assembly from the lock



**3 Insert lock into door**  
Insert lock into door  
Loosen insert mounting screws



**4 Reattach bolt**  
Slightly rotate loose thumb turn to make lock body screws visible  
Reinstall bolt assembly by aligning screw holes  
Tighten screws  
Use thumb turn to fit bolt assembly back in



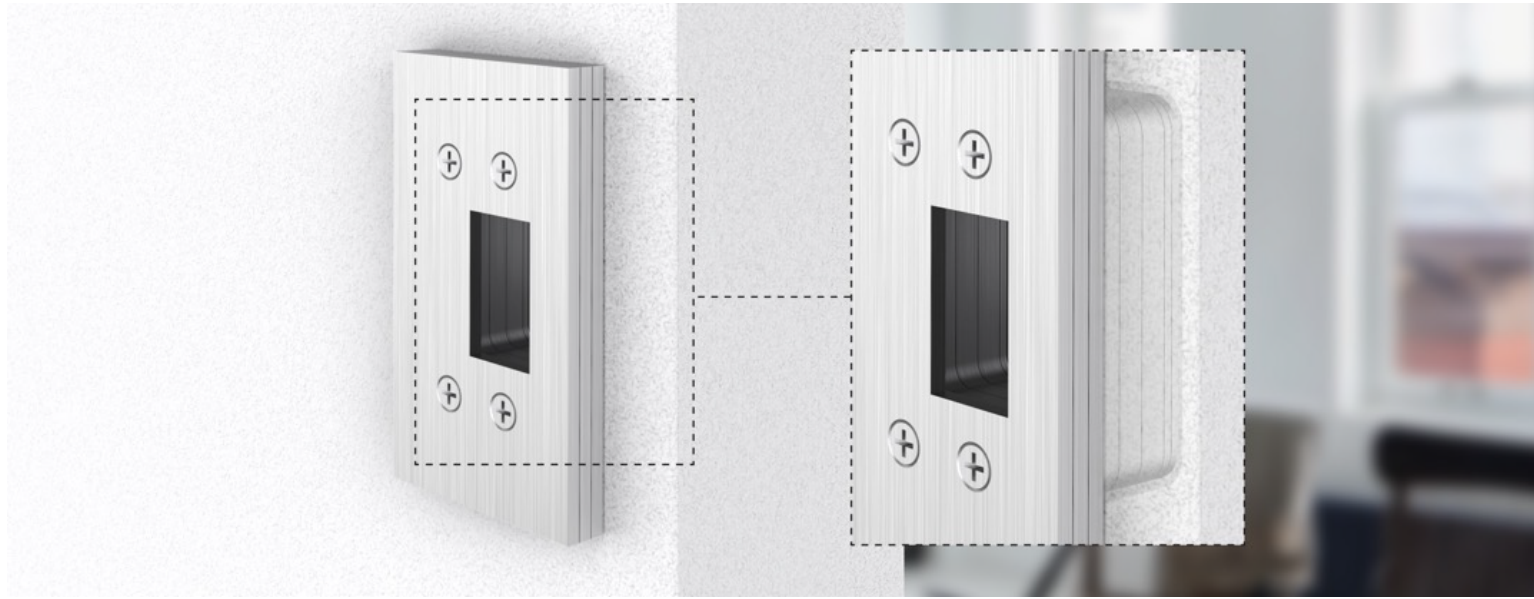
**5 Install armour front**  
Secure lock in door by tightening screws into door  
Install armour front onto basefront



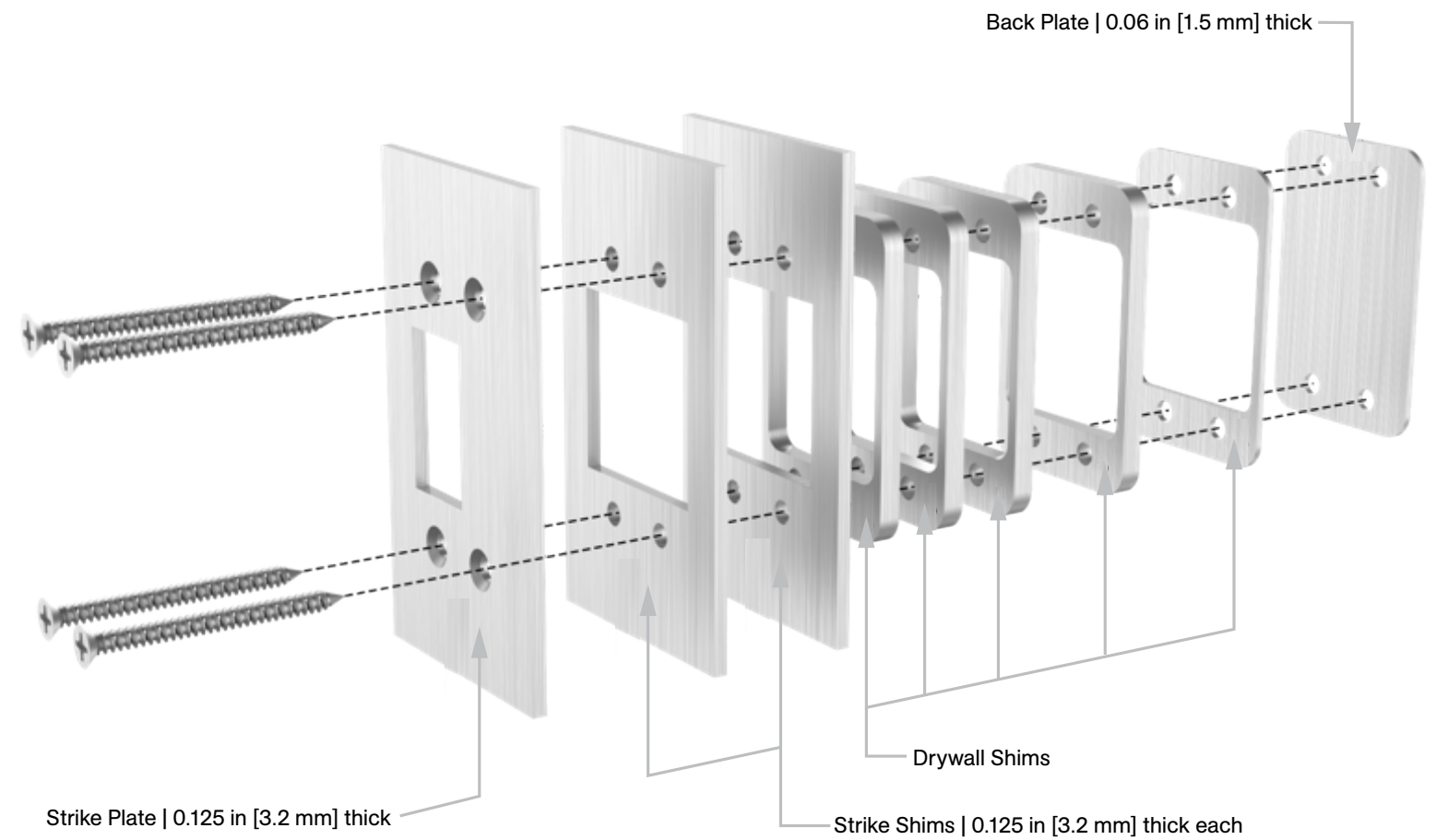
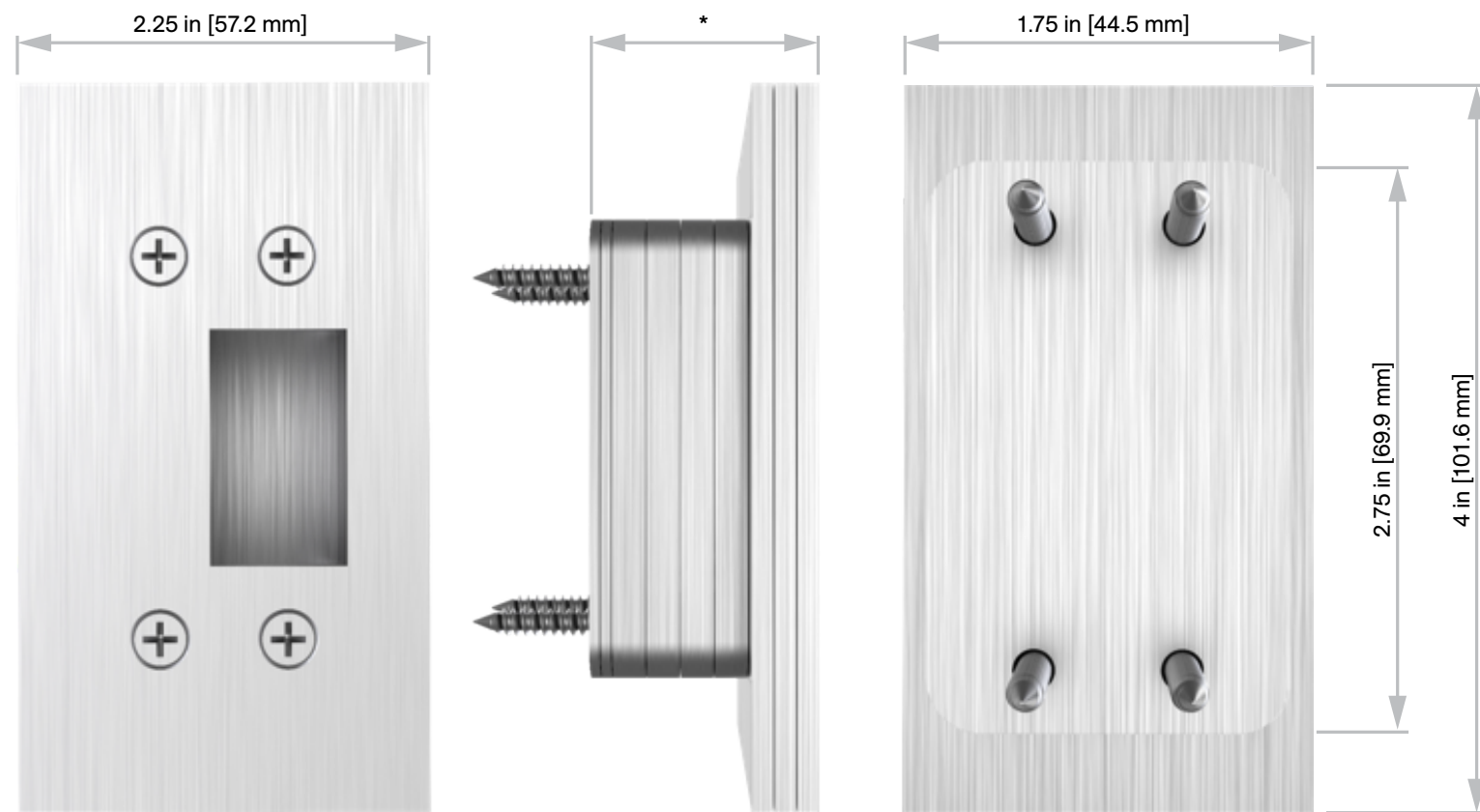
**6 Mount cuff**  
Mount the bolt cuff aligning per template  
Install trim accordingly

# Strike Kit

Supplied Standard



Not to scale



Number of drywall shims used is a function of drywall thickness.

Number of strike shims used is a function of the gap between the face of the door and the wall.