

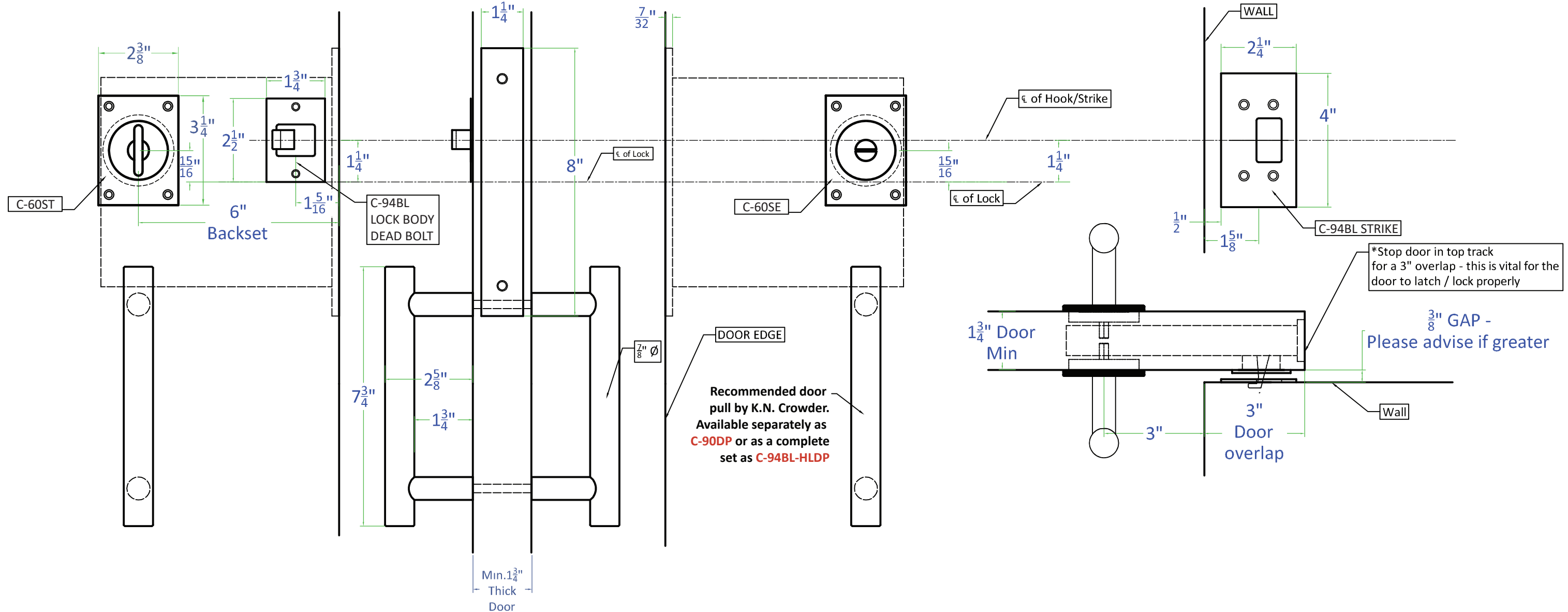
C-94BL-SET PRIVACY LOCK SET

PRODUCT DETAILS

SUITABLE FOR 1-3/4" THICK DOORS ONLY

COMPONENTS INCLUDED:

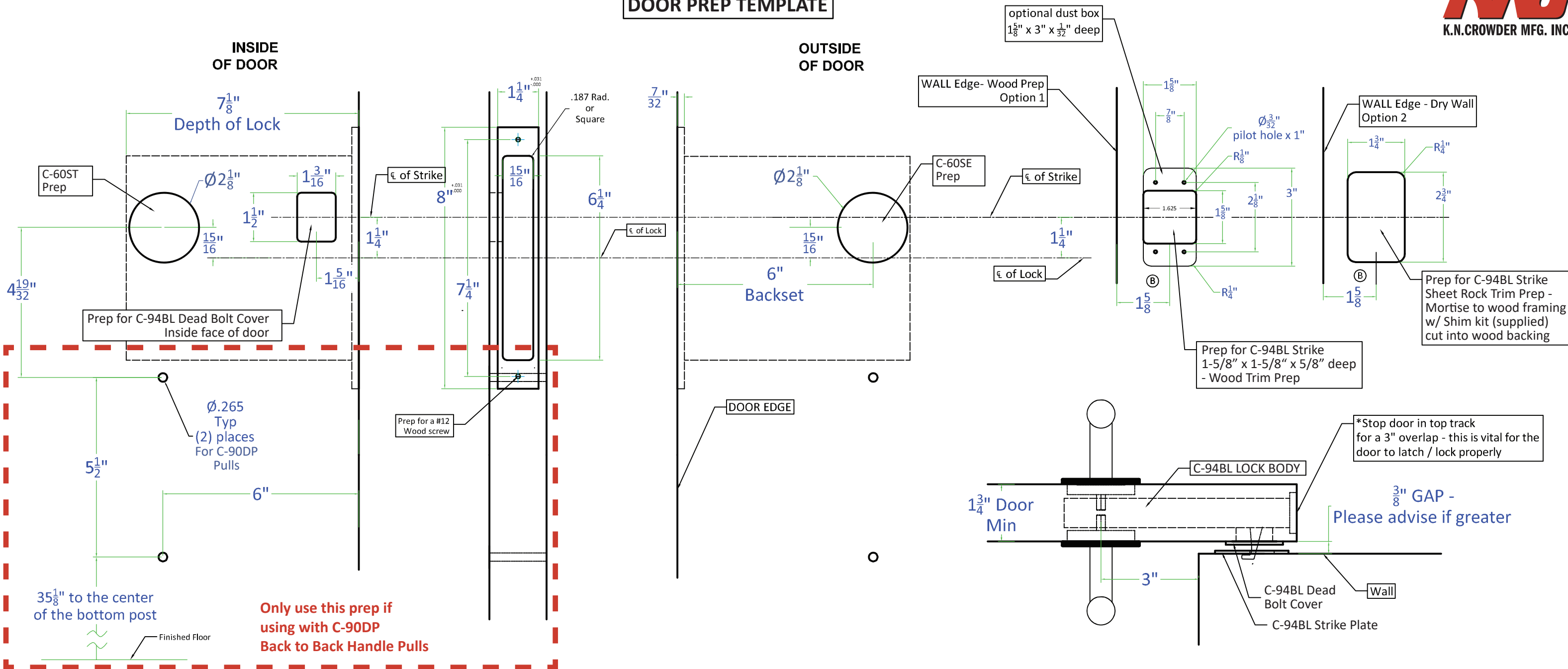
1x	1x	1x
C-94BL (Barn Door Lock Body)	C-60ST (Square Thumb Turn Flush Pull)	C-60SE (Square ER Coin Turn)



Note:
 Door size =
 Opening Width PLUS 6".
 Example: 40" Opening + 6" = 46"
 wide door

C-94BL-SET PRIVACY LOCK SET

DOOR PREP TEMPLATE



K.N. CROWDER MFG. INC.
 1220 BURLOAK DRIVE
 BURLINGTON, ONTARIO, CANADA, L7L 6B3
 TOLL-FREE PHONE: 1-866-999-1KNC (1562)
 TOLL-FREE FAX: 1-800-567-0123

K.N. CROWDER INC.
 210 EIGHTH STREET SOUTH
 LEWISTON, NEW YORK, U.S.A. 14092
 TOLL-FREE PHONE: 1-866-999-1KNC (1562)
 TOLL-FREE FAX: 1-800-567-0123

WEBSITE: www.kncrowder.com
 EMAIL: customerservice@kncrowder.com
 © 2019 K.N. CROWDER MFG. INC. All Rights Reserved.

<p>1 Expose Screws</p> <ul style="list-style-type: none"> • Rotate thumb turn 90 degrees to project bolt and expose the two bolt screws 	<p>2 Remove Bolt from Lock Body</p> <ul style="list-style-type: none"> • Extend the bolt and loosen screws without removing them and remove bolt assembly from the lock 	<p>3 Insert Lock into Door</p> <ul style="list-style-type: none"> • Insert lock into door • Loosely insert mounting screws 	<p>4 Reattach Bolt</p> <ul style="list-style-type: none"> • Slightly rotate loose thumb turn to make lock body screws visible • Reinstall bolt assembly by aligning screw holes • Tighten screws • Use thumb turn to fit bolt assembly back in 	<p>5 Install Armor Front</p> <ul style="list-style-type: none"> • Secure lock in door by tightening screws into door • Install armor front onto basefront 	<p>6 Mount Cuff</p> <ul style="list-style-type: none"> • Mount the bolt cuff aligning per template • Install trim accordingly
---	---	---	---	--	--