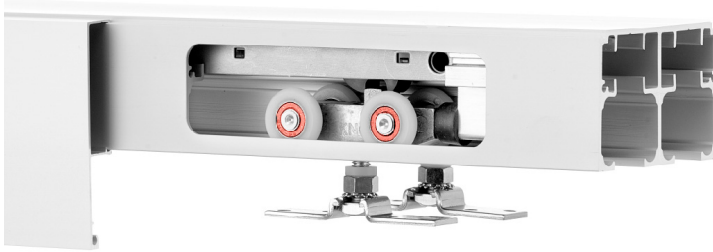


# CCD-493-38-W



## FEATURES

- 150 lbs. [68 kg] weight capacity
- Effortless opening and closing of the door with the Catch 'N' Close Closing System (for doors wider than 18 in [457 mm])
- Easy Connect Hanger System for easy installation
- Nylon wheels and precision ball bearings provide smooth and quiet door operation
- Cycle tested for up to 150,000 cycles without fail
- ADA Compliant (Barrier-free) design
- Available in clear or black anodized, mill finish or powder coated
- For 1 3/8 in [34.9 mm] thick doors

## COMPLETE 2 DOOR KIT BREAKDOWN



### 1 - CC-538 Double Track

x length based on kit size (e.g. 72 in [1829 mm] kit for 36 in [914 mm] wide door)



### 4 - CC-493 Easy Connect Catch 'N' Close Hangers

complete with screws and adjustment tools



### 4 - CC-100 Catch 'N' Close In-Track Stops

complete with set screws for friction fit



### 4 - Catch 'N' Close Closing Devices

complete with screws

**CC-75** for doors up to 75 lbs. [34 kg]

**CC-1** for doors up to 150 lbs. [68 kg]



### 2 - C-914 Aluminum Guide Channel

x length based on kit size (e.g. 36 in [914 mm] guide channel for 72 in [1829 mm] kit)



### 1 - C-913D-138 Bypass Double Guide

complete with screws

## OPTIONAL

### Door Locks & Pulls



### Add-On Products



### CC-440 Fascia x 1

x length based on required size

### CC-440 Fascia x 2

x length based on required size

Customer Name

Job No./Name

Date

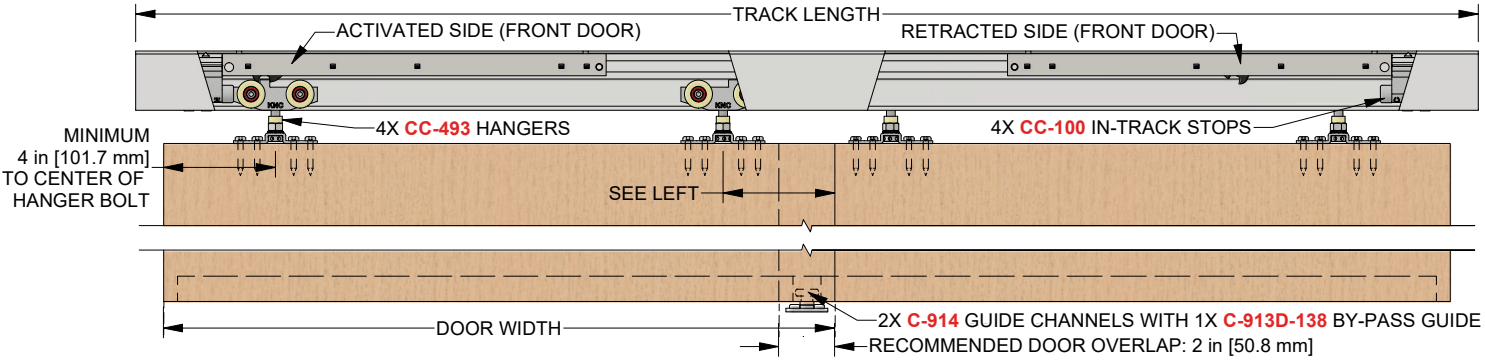
Provided By

Notes

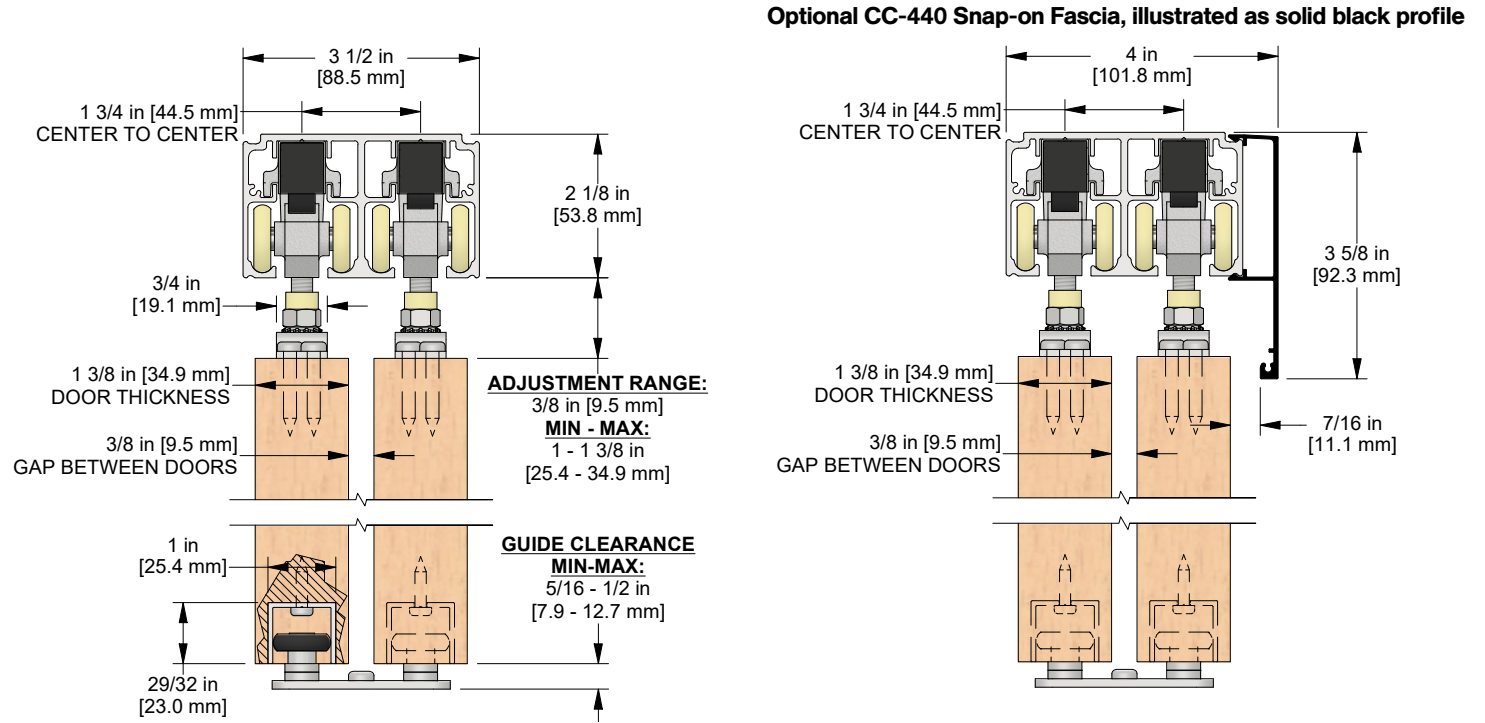
# CCD-493-38-W



## COMPLETE ELEVATION VIEW



## PRODUCT DIMENSIONS



Optional CC-440 Snap-on Fascia, illustrated as solid black profile

Installation  
Instructions



Customer Name	Job No./Name	Date	Provided By
_____	_____	_____	_____

Notes