

CCGH-908

Installation Instructions

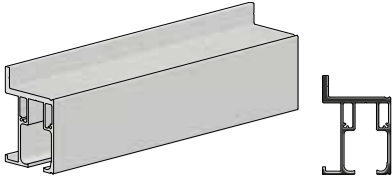
Used with CC-908 Side Mount Track

KNC
Catch 'N' Close

Catch 'N' Close System for Glass Doors

- Prevents bouncing and slamming of sliding doors
- Can be installed on both opening and closing ends of doors as narrow as 30 in [762 mm]
- Cycle tested up to 150,000 times
- For 1/2 in [12 mm] or 3/8 in [10 mm] thick glass
- For up to 300 lbs. [136 kg] with CC-3

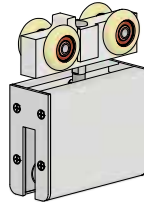
Parts List



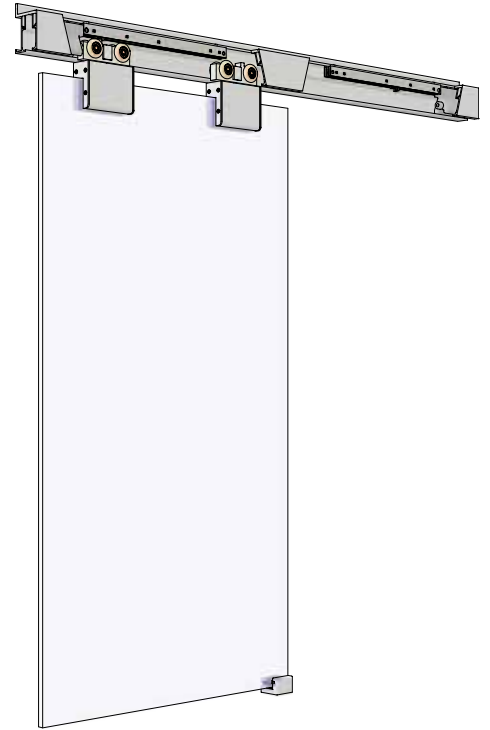
CC-908 Side Mount Track x length (1)

Length = 2 x door width, example:

36 in [914 mm] door = 72 in [1829 mm] track



**CCGH-[]
Hanger (2)**

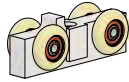


Complete CCGH-[] with CC-908 kit illustrated. Cut-outs in track to expose components.

Disassembled Parts List



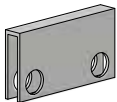
**CGH-CB Custom
Hanger Bolt (1)**



**CCGH Hanger Body (1)
c/w wheels**



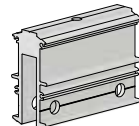
**3/8-16 Hex
Jam Nut (3)
[FT20]**



**CGH-RB[] Rubber
Boot (1)**



CGH-F Fascia (2)



**CGH Aluminum
Hanger Body (1)**



**CGH Nylon
Spacers (2)**



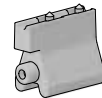
**CGH-GB Glass
Bolt (2)**



**CGH-SEC Slotted
End Cap (2)**



**#6-32 x 1/2" Flat
Phillips Undercut
Machine Screw (8)
[FT49]**



**CC-101HD Catch 'N' Close In-Track Stops
(2)**

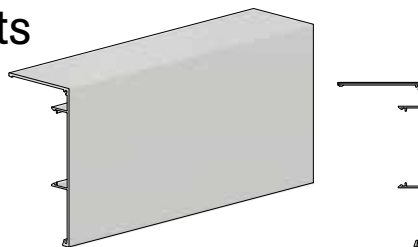
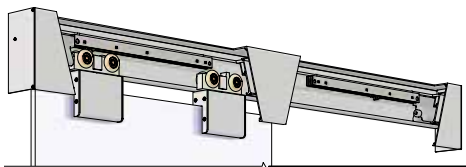


**Catch 'N' Close Closing Device (2)
see details in instruction steps**



**#10 x 1-1/2" Self-Drilling Screws (4)
[FT5]**

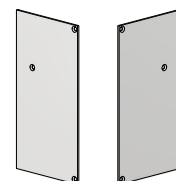
Optional Add-on Products



CC-980 Snap-on Fascia x length (1)

Length = same as track length, example:

72 in [1829 mm] track = 72 in [1829 mm] fascia



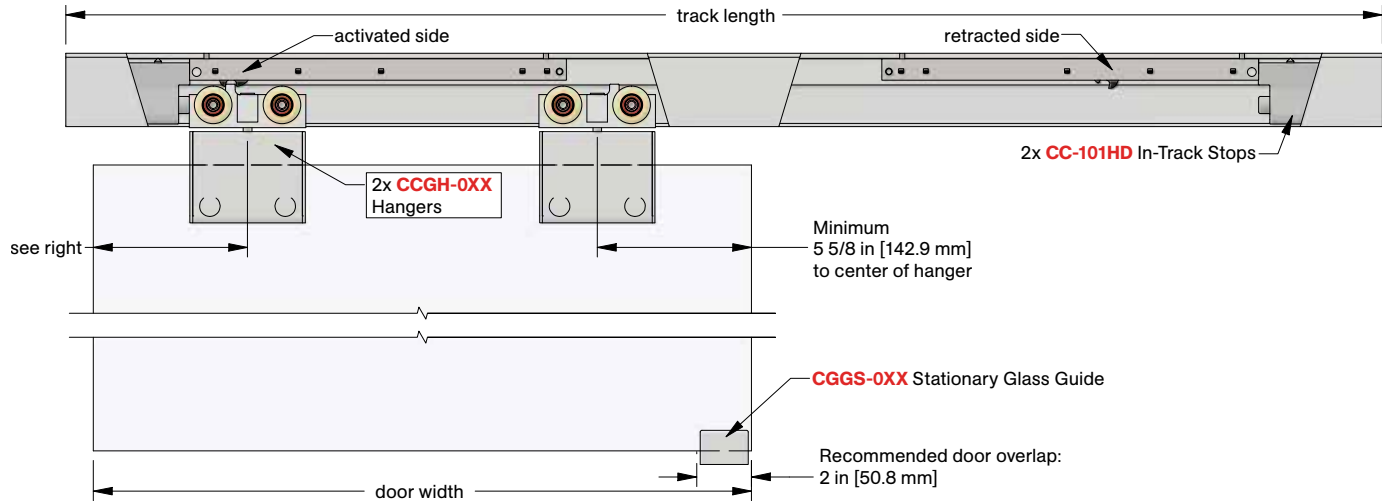
**CC-982 End Caps
(2)**

Left and right

**#4 x 5/16" Flat
Head Screws (6)
[FT29]**

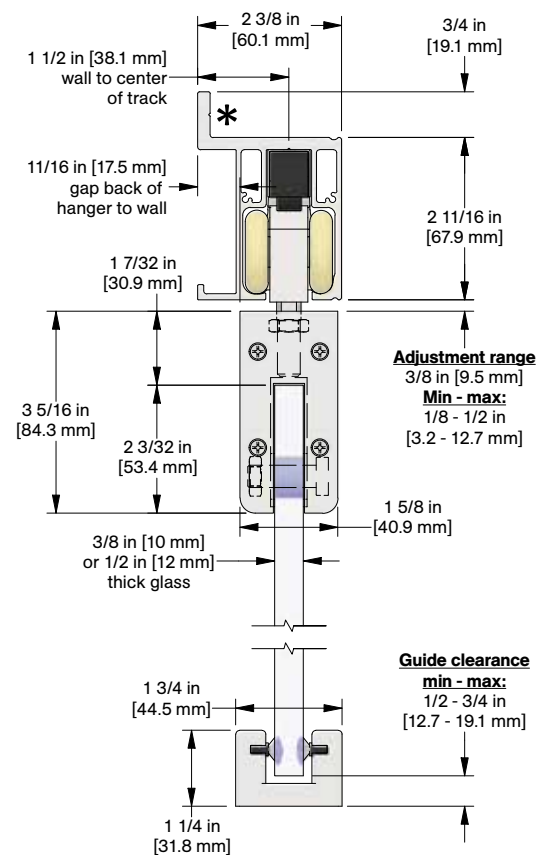
Product Details and Dimensions

Elevation View

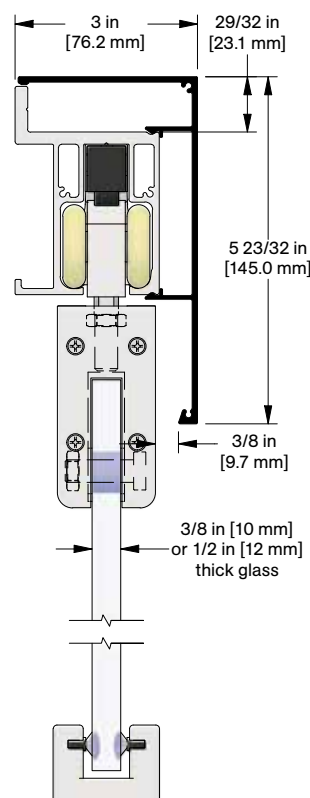


Section View

* Indicates mounting flange on CC-908 Track

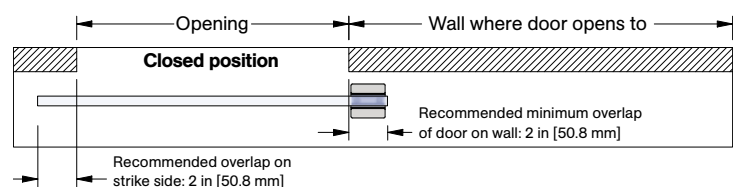
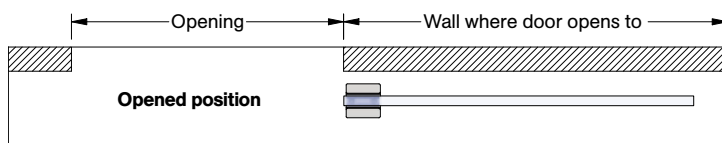


Optional CC-980 Snap-on Fascia, illustrated as solid black profile



Typical installation location for floor guides

For barn door applications



Installation Steps

Step #1:

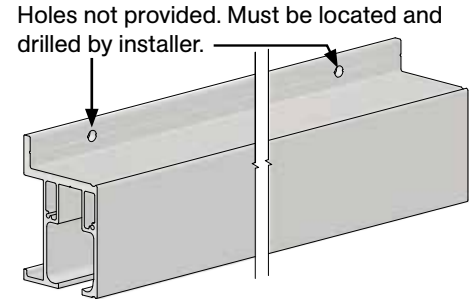
Determine door size, header height, track position, and bottom clearance based on kit code ordered by using dimensions shown in detail views on previous page.

Step #2:

Note: If access to the ends of track is not available, steps #3 and 4 must be completed before step #2.

Cut CC-908 aluminum track to size if required, typically 2x door width. Locate and pre-drill holes in mounting flange on track. Secure track to structural support/backing.

Note: Solid backing is required. Recommended to use 5/16 in [7.9 mm] diameter lag or structural bolts to secure track. Spacing is recommended to be between 12-16 in [304-406 mm] on center. Consult structural engineer to ensure adequate support and fastening.



Step #3:

Assemble CCGH Catch 'N' Close Hangers as shown right:

Fig. 1 Thread CGH-CB Custom Hanger Bolt into CCGH Hanger Body from top side with trigger and thread 3/8-16 Hex Jam Nut [FT20] on bolt.

Fig. 2 Completed CCGH Hanger assembly, 2 x required

Fig. 1

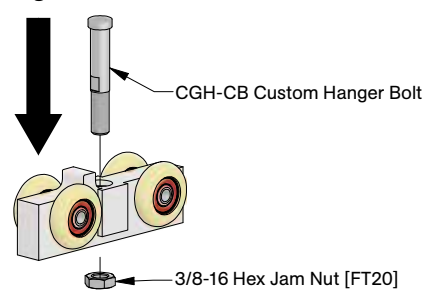
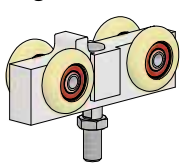


Fig. 2



Step #4:

Slide one (1) CCGH Hanger assembly (★) with trigger facing end of track and one (1) CC-101HD In-Track Stop (●) into each end of track, as shown below.

Note: Leave screws on CC-101HD In-Track Stops (●) loose to allow stops to slide freely within track. Rubber bumpers of each stop (●) should face inward, toward middle of track.

- ★ CCGH Hanger
- CC-101HD In-Track Stops

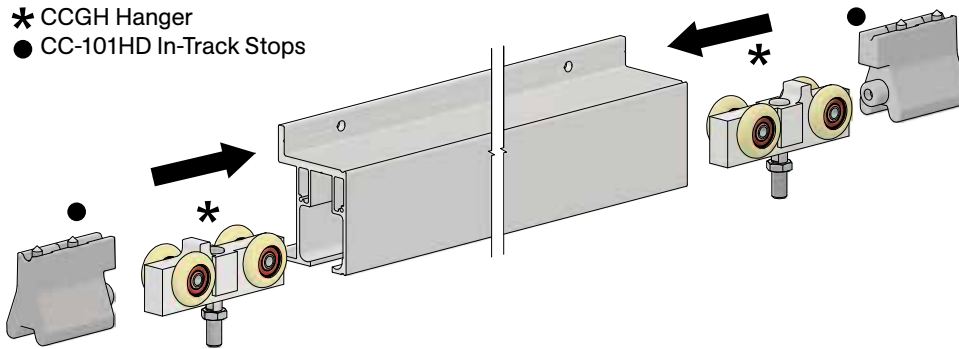
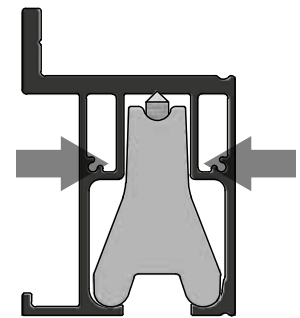
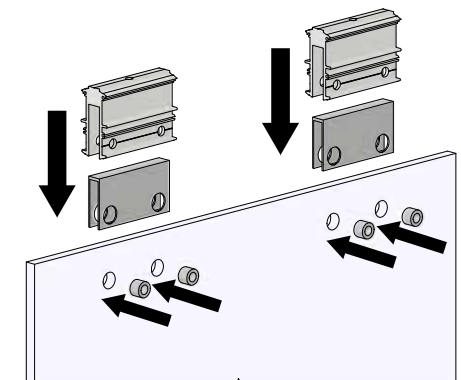


Illustration below shows correct positioning of stops in track



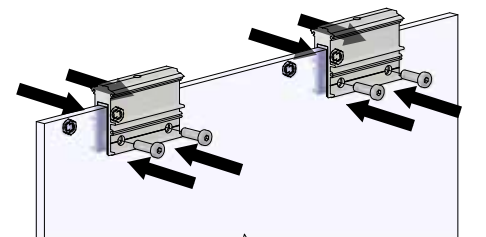
Step #5:

Prepare glass door with holes per glass prep template attached. Insert CGH Nylon Spacers in prep holes of glass door. Slip CGH-RB [] Rubber Boot over top edge of glass, then CGH aluminum hanger body over rubber boot. Align holes on rubber boot and hanger body with CGH Nylon Spacers and holes on glass door. See right.



Step #6:

Thread (2) CGH-GB Glass Bolts per hanger through holes in glass and into (2) 3/8-16 Hex Jam Nut [FT20]. See below.

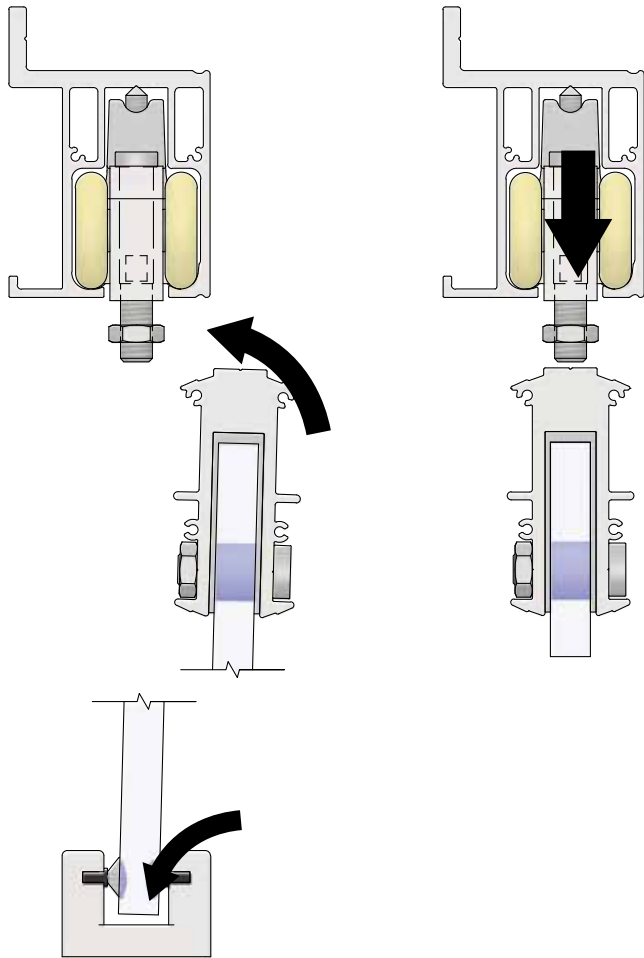


Step #7:

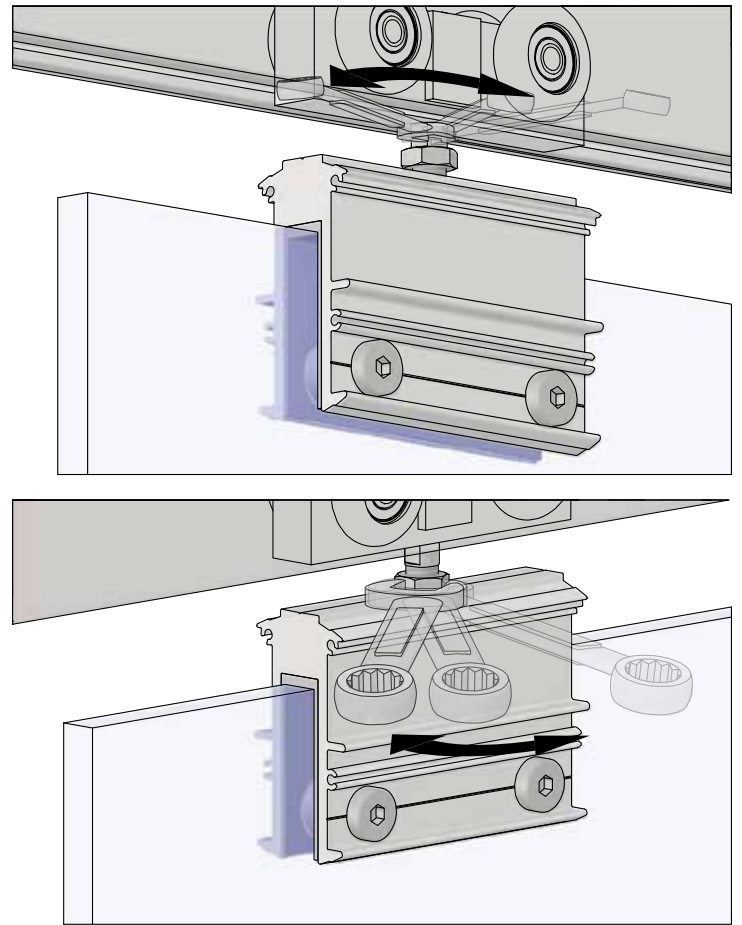
Refer to chosen guide installation instructions based on system selected.

Step #8:

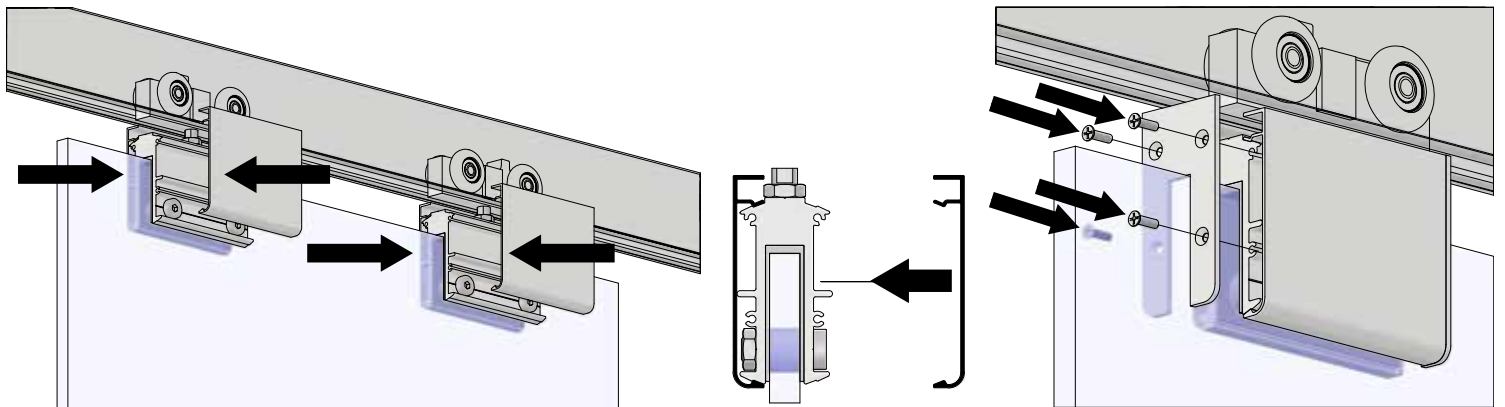
Raise door, position over guide, and under hangers in track. Lift CGH-CB Custom Hanger Bolt in track and engage with threaded hole on CGH Hanger Body. Adjust door height and plumb by using 5/16 in [7.9 mm] wrench on adjustment flats located on CGH-CB Custom Hanger Bolt. Lock final height adjustment with 3/8-16 Hex Jam Nuts [FT20] using 9/16 in [14.3 mm] wrench.



Hanger adjustment view

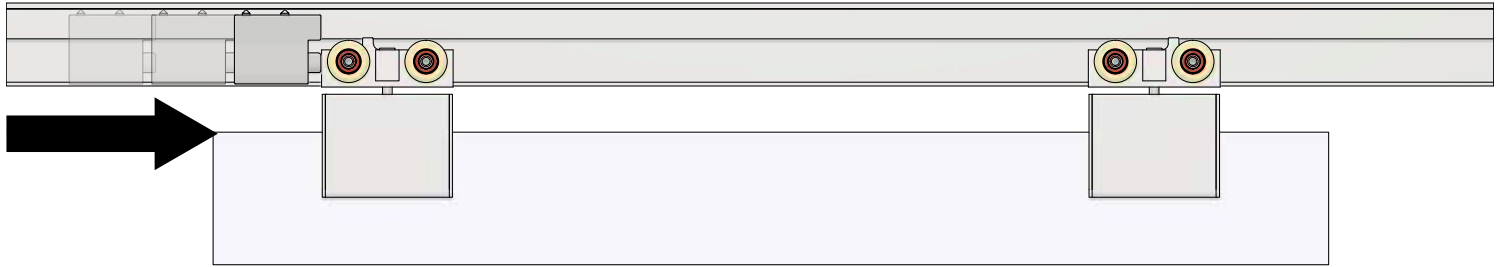
**Step #9:**

Snap CGH-F Fascia onto hanger body, one per side. Place CGH-SEC Slotted End Caps onto ends of each hanger and fasten with (4) #6-32 x 1/2" Flat Phillips Undercut Machine Screw [FT49] per end cap.



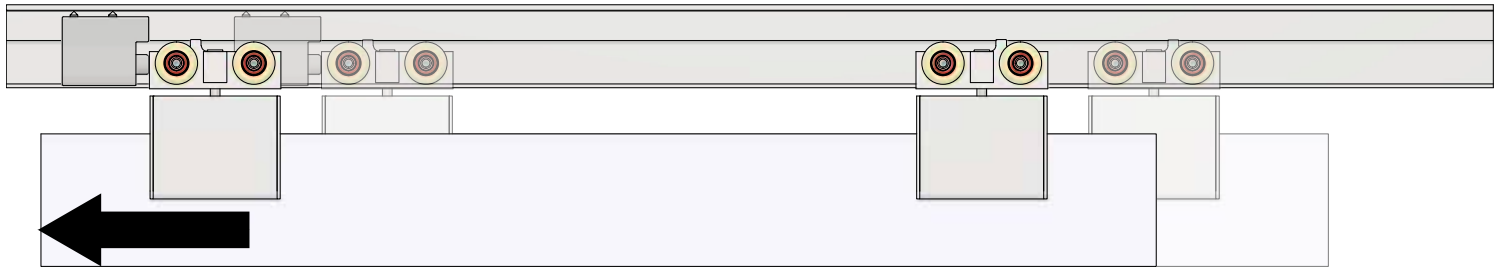
Step #10:

After door has been installed, position door approximately 5-10 in [127-254 mm] away from final position at one end, shown below with left side. Push loose CC-101HD Stop, installed in **step #4**, against hanger body.

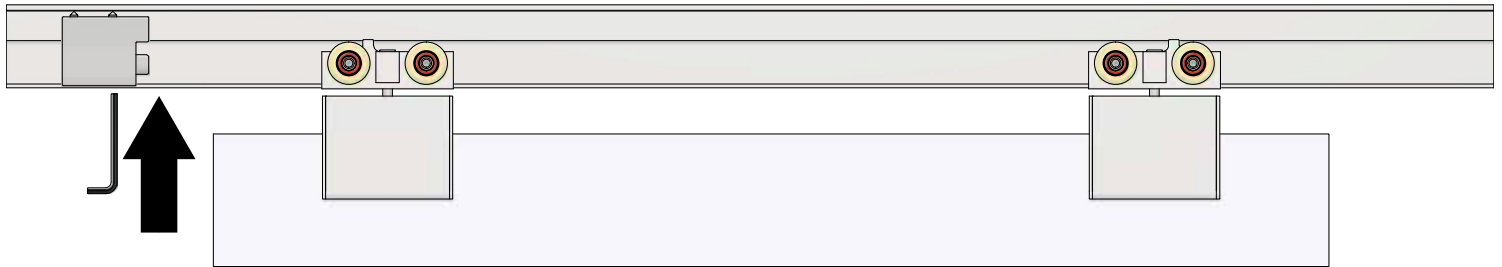
**Step #11:**

With CC-101HD Stop loose, slide door to final/desired position of door as shown below.

Note: Ensure that strike and trim thickness are taken into consideration for final/desired position of door.

**Step #12:**

Once final position is achieved, slide door away from CC-101HD Stop. Lock CC-101HD Stop in position by tightening two cap screws on CC-101HD Stop with 3/16 in [4.8 mm] allen key. CC-101HD is secured by friction fit with cone point screws.

**Step #13:**

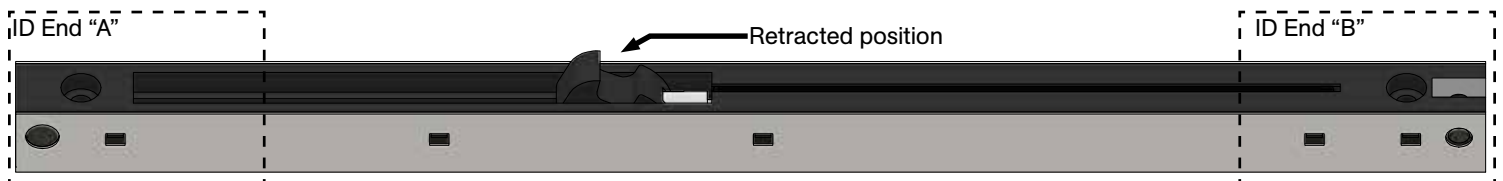
Repeat **steps #10 - 12** for opposite side.

Note: Ensure that strike and trim thickness are taken into consideration for final/desired position of door.

Step #14:

Before installing Catch 'N' Close Closing Devices, ensure devices are in retracted position as shown below. If not in required position, slide hook down until it locks in position.

Note: Requires significant finger pressure.

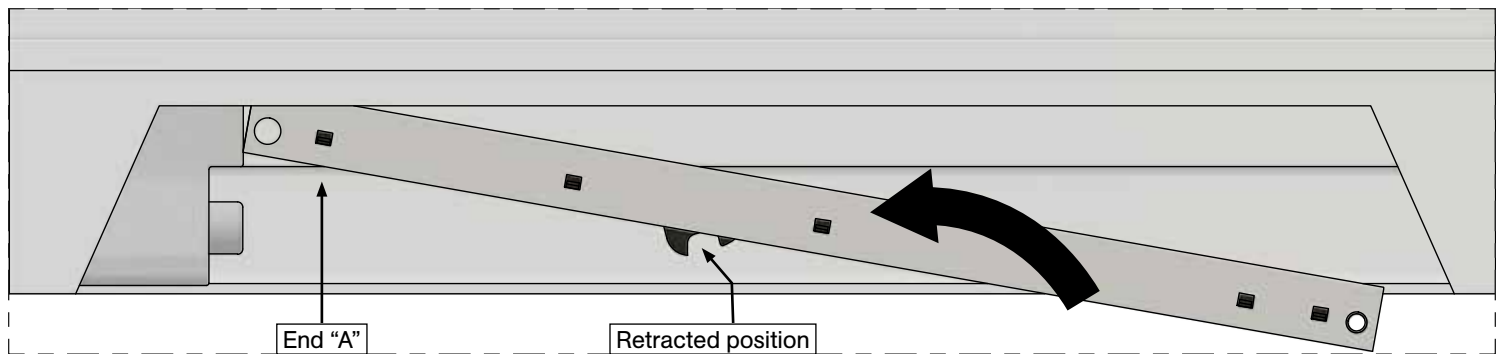
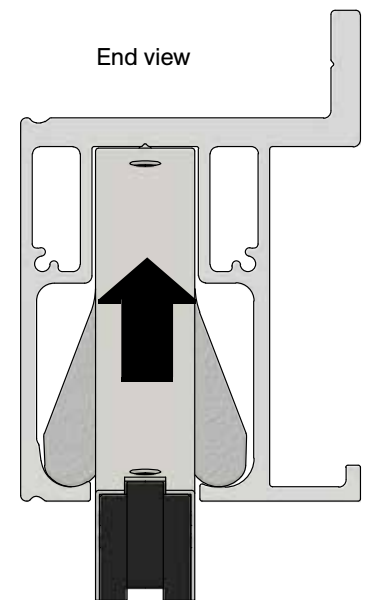
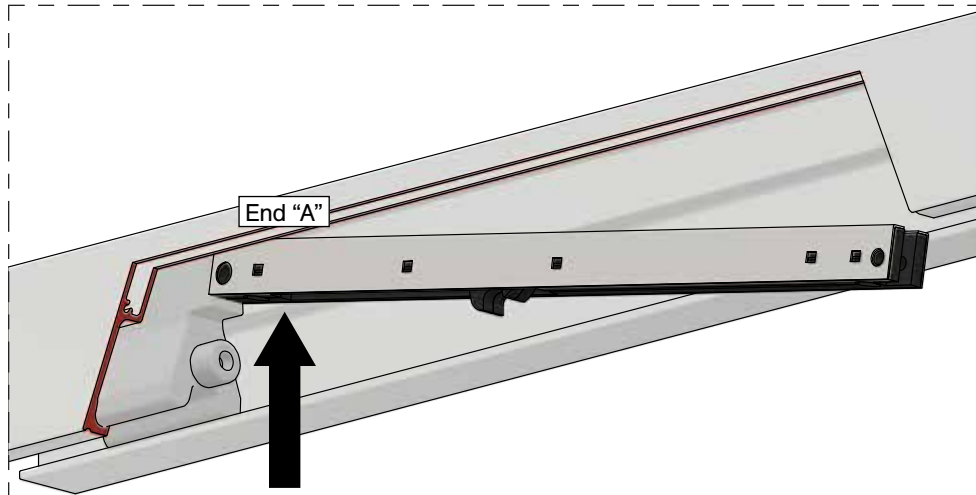
**Important Catch 'N' Close Closing Device Notes:**

If doors are 200 lbs. [90 kg] or less, ensure CC-2 Catch 'N' Close Closing Devices are used.

If doors are minimum 200 lbs. [90 kg] up to 300 lbs. [136 kg], ensure CC-3 Catch 'N' Close Closing Devices are used.

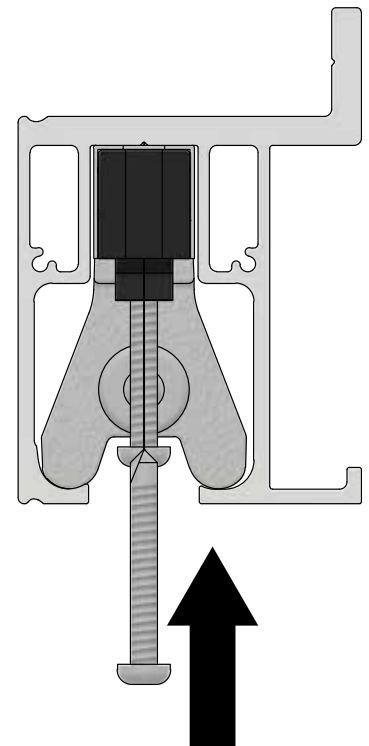
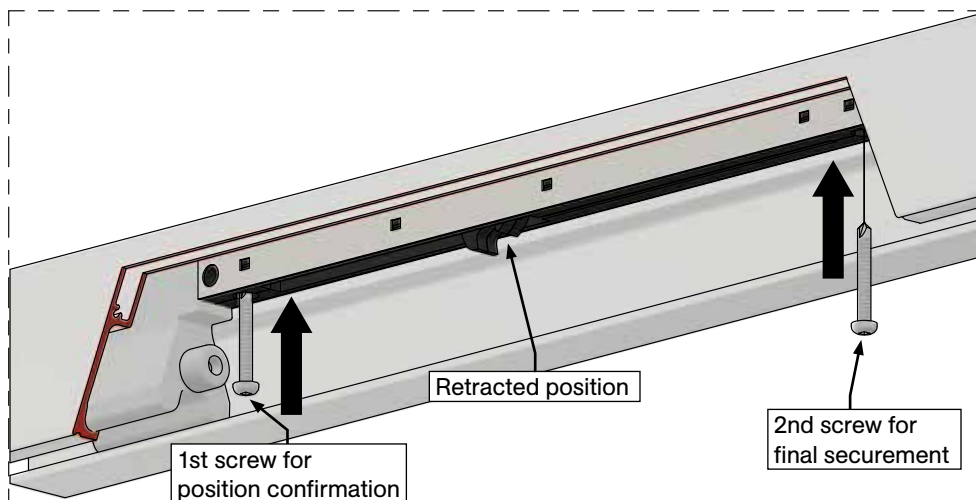
Step #15:

Place Catch 'N' Close Closing Device into track with leading end "A" resting against upper body on CC-101HD Stops installed previously. See illustrations below:

**Step #16:**

Secure Catch 'N' Close Closing Device to track with (2) #10 x 1-1/2" Self-Drilling Screws [FT5]. Repeat for opposite end with Catch 'N' Close Closing Device installed in reverse as shown on front page in "Elevation View" Illustration.

Note: If using impact drive to secure Catch 'N' Close Devices, do not overtighten screws. It is recommended to pre-drill track with Ø9/64 in [3.6 mm] drill bit. Secure first screw closest to CC-101HD Stop only and test system by sliding door to activate Catch 'N' Close. If it is in correct position, secure with second screw. Remove any drill fillings from inside track.

**Step #17:**

Test complete Catch 'N' Close system by sliding door to both left and right to activate closing devices.

Optional CC-980 Fascia and CC-982 End Cap Installation

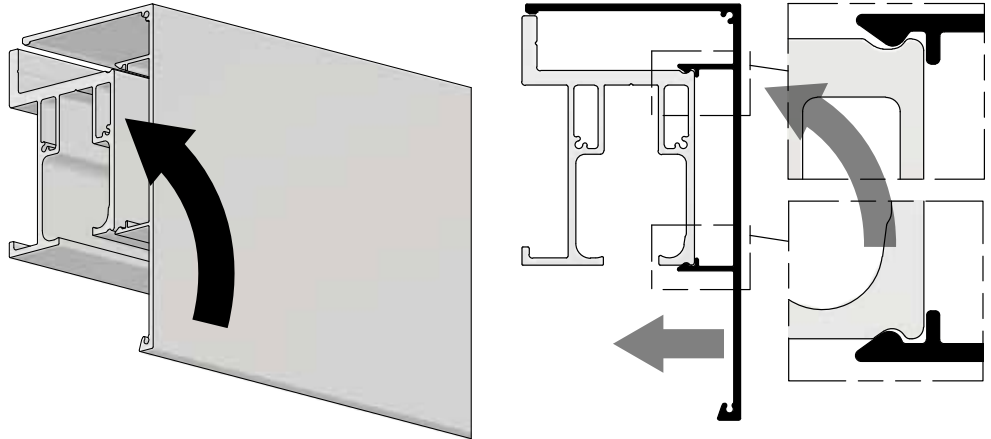
Step #F1:

Cut CC-980 Fascia to correct length if required. Typically, fascia is same length as track previously installed.

Step #F2:

Lift fascia up to track and snap on as shown below.

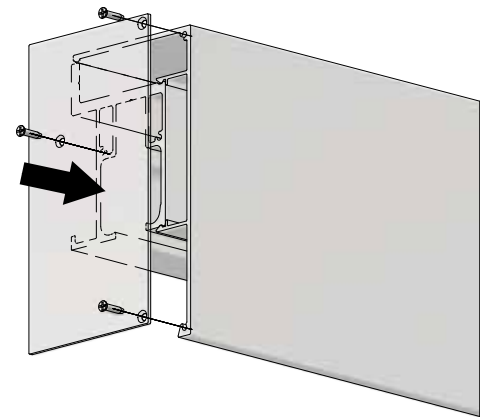
Note: If fascia is loose and a tighter fit is desired, use a rubber mallet on inside leg of fascia to reduce gap at +/-24 in [610 mm] intervals.



Step #F3:

Install CC-982 End Cap as shown right with supplied #4 x 5/16" Flat Head Screws [FT29], 3 screws per end cap provided.

Note: Do not install with impact driver.



Troubleshooting

Issue	Solution
Chatter/noise when door is sliding	Ensure there are no aluminum shavings within track. Shavings can become embedded in nylon tires and cause noise during operation.
Door is hard to move	Ensure guide channel secured to bottom of door is not over-tightened as this could cause sides of guide channel to "pinch" guide. Remove door and check guide channel by rolling guide roller in channel to ensure smooth travel. There should be little to no resistance. Ensure door is not dragging on bottom of floor/guides and adjust height of door as required.
Door rattles	Ensure locking nuts and screws on hangers are secured and not loose.
Door is not engaging closing device	Ensure hangers are correctly oriented. See steps #4 - 5 . Ensure Catch 'N' Close Closing Devices are in correct retracted or extended position prior to sliding door closed/open. See step #15 .
Replacing the Catch 'N' Close Device	The Catch 'N' Close track and hardware system has been designed for easy installation. Remove two screws that hold Catch 'N' Close Closing Device in place and replace device with a new one if failure occurs.

Glass Door Prep Details

