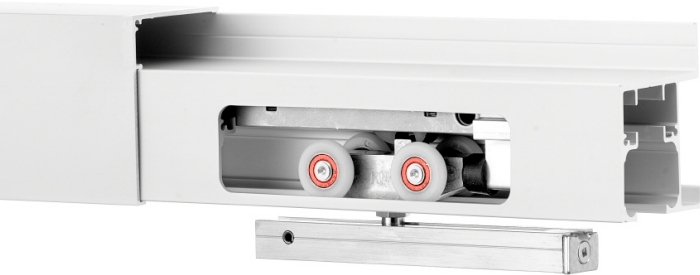


CCL-410-W



FEATURES

- 150 lbs. [68 kg] weight capacity
- Effortless opening and closing of the door with the Catch 'N' Close Closing System (for doors wider than 18 in [457 mm])
- Zero Clearance Hanger System reduces light and sound entry
- Nylon wheels and precision ball bearings provide smooth and quiet door operation
- Cycle tested for up to 150,000 cycles without fail
- ADA Compliant (Barrier-free) design
- Available in clear or black anodized, mill finish or powder coated

COMPLETE 1 DOOR KIT BREAKDOWN



- 1 - CC-408 Side Mount Track**
x length based on kit size (e.g. 72 in [1829 mm] kit for 36 in [914 mm] wide door)



- 1 - CC-470 Low Profile Fascia**
x length based on required size



- 1 - CC-471 End Cap Pair**
complete with screws



- 2 - CC-410 Zero Clearance Catch 'N' Close Hangers**
complete with screws and adjustment tools



- 2 - CC-100 Catch 'N' Close In-Track Stops**
complete with set screws for friction fit



- 2 - Catch 'N' Close Closing Devices**
complete with screws
CC-75 for doors up to 75 lbs. [34 kg]
CC-1 for doors up to 150 lbs. [68 kg]



- 1 - C-914 Aluminum Guide Channel**
x length based on kit size (e.g. 36 in [914 mm] guide channel for 72 in [1829 mm] kit)

- 1 - C-913 Floor Guide**
complete with screws

OPTIONAL

Door Locks & Pulls

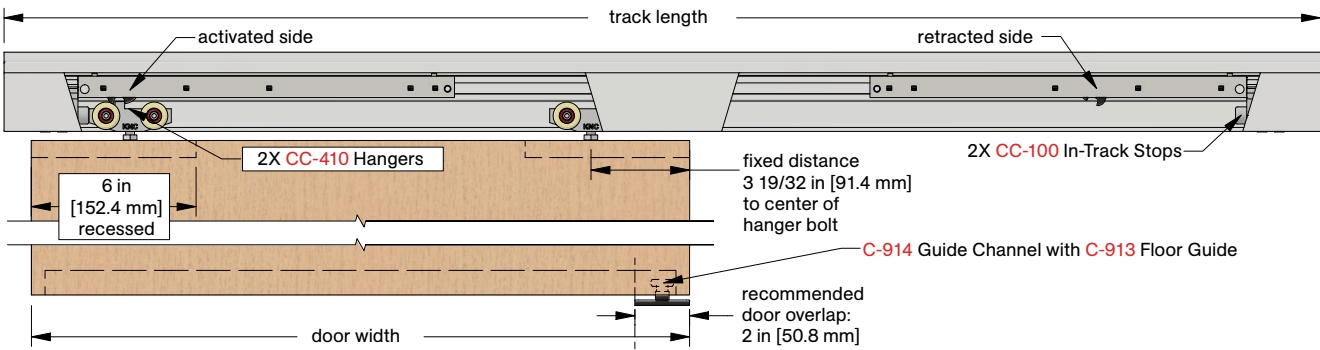


Customer Name	Job No./Name	Date	Provided By
<hr/>	<hr/>	<hr/>	<hr/>
Notes			

CCL-410-W



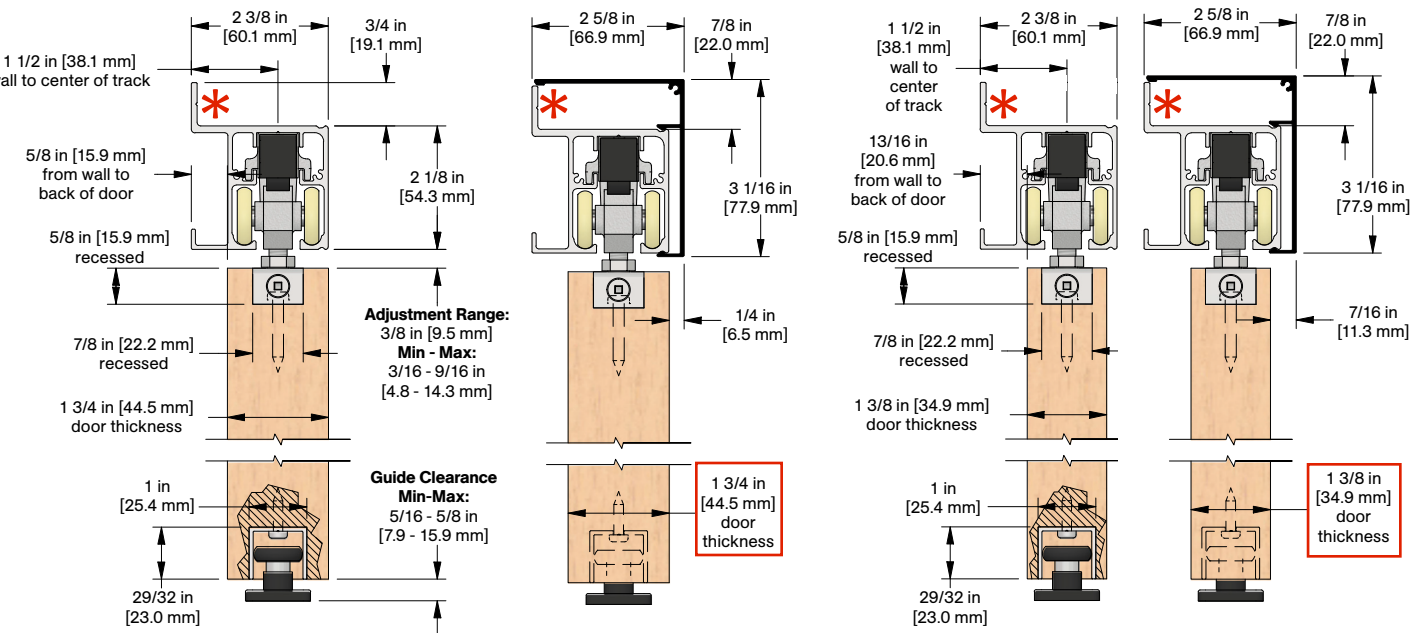
COMPLETE ELEVATION VIEW



PRODUCT DIMENSIONS

* Indicates mounting flange on CC-408 Track

Optional CC-470 Snap-on Fascia, illustrated as solid black profile



Installation
Instructions



Customer Name	Job No./Name	Date	Provided By

Notes