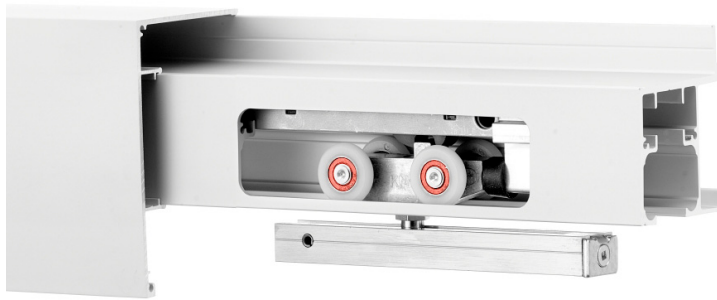


CCS- and CCSF-410-B



FEATURES

- 150 lbs. [68 kg] weight capacity
- Effortless opening and closing of the door with the Catch 'N' Close Closing System (for doors wider than 18 in [457 mm])
- Zero Clearance Hanger System reduces light and sound entry
- Nylon wheels and precision ball bearings provide smooth and quiet door operation
- Cycle tested for up to 150,000 cycles without fail
- ADA Compliant (Barrier-free) design
- Available in clear or black anodized, mill finish or powder coated

COMPLETE 1 DOOR KIT BREAKDOWN



1 - CC-408 Side Mount Track

x length based on kit size (e.g. 72 in [1829 mm] kit for 36 in [914 mm] wide door)



2 - CC-410 Zero Clearance Catch 'N' Close Hangers

complete with screws and adjustment tools



2 - CC-100 Catch 'N' Close In-Track Stops

complete with set screws for friction fit



2 - Catch 'N' Close Closing Devices

complete with screws

CC-75 for doors up to 75 lbs. [34 kg]

CC-1 for doors up to 150 lbs. [68 kg]



1 - C-201 Aluminum Guide Channel

x length based on kit size (e.g. 36 in [914 mm] guide channel for 72 in [1829 mm] kit)

1 - C-200 Floor Guide

complete with screws

OPTIONAL

Door Locks & Pulls



Add-On Products



CC-480 Fascia

x length based on required size

CC-482 End Cap Pair

Complete with screws

For use with CC-480 fascia

Customer Name

Job No./Name

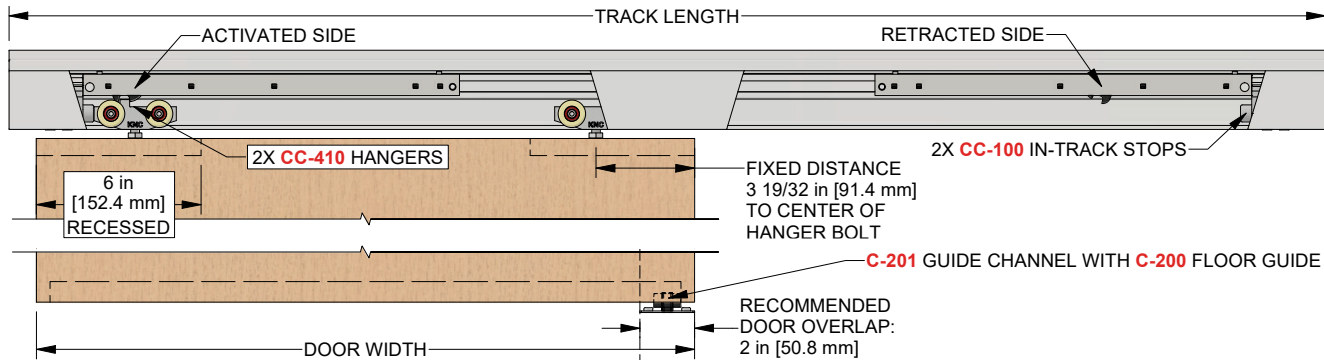
Date

Provided By

Notes

CCS- and CCSF-410-B

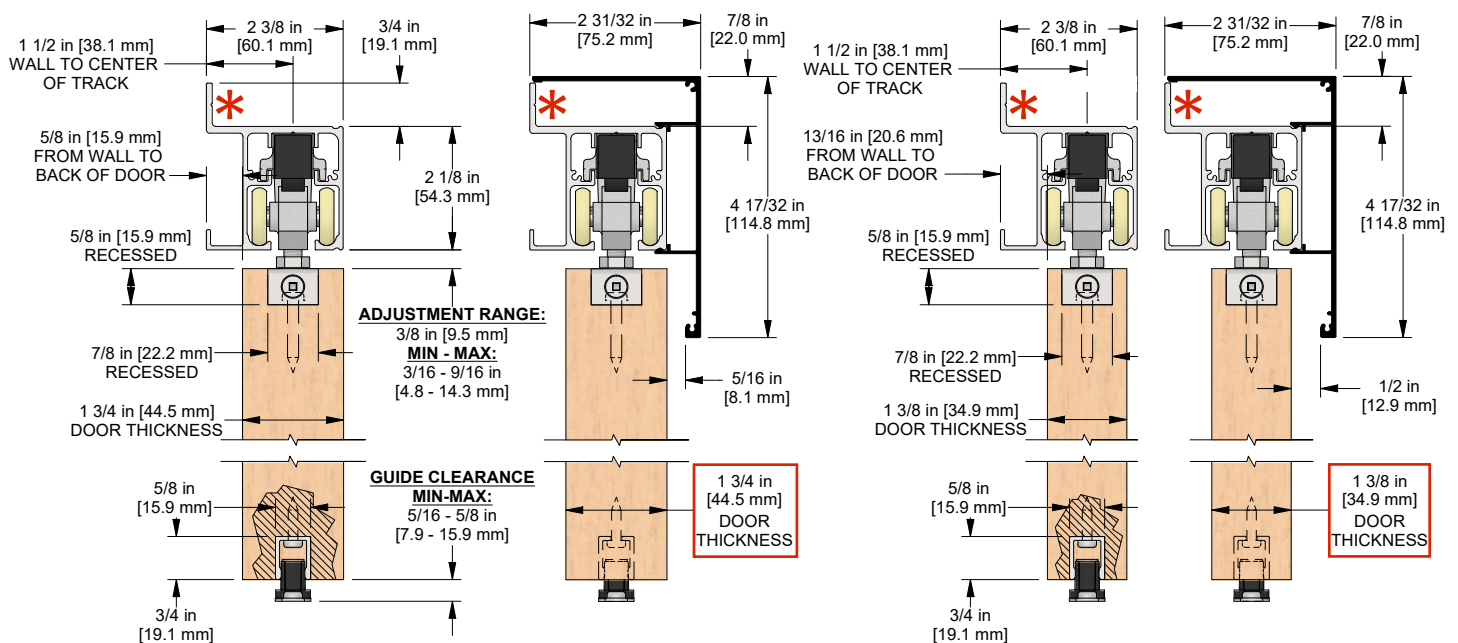
COMPLETE ELEVATION VIEW



PRODUCT DIMENSIONS

* Indicates mounting flange on CC-408 Track

Optional CC-480 Snap-on Fascia, illustrated as solid black profile



Installation
Instructions



Customer Name

Job No./Name

Date

Provided By

Notes