

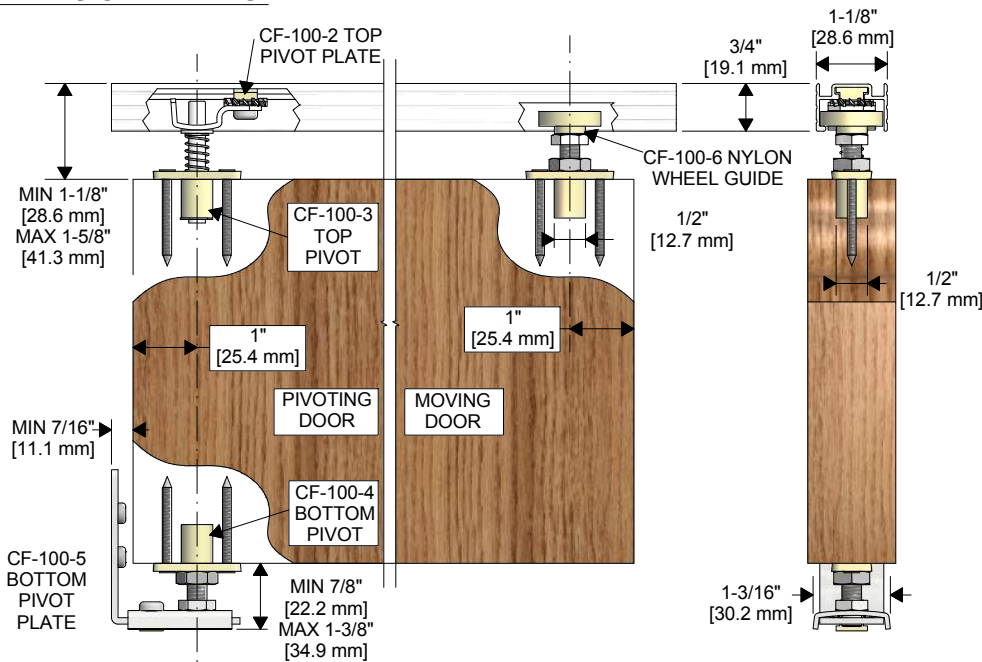
CF-100 BI-FOLDING DOOR SERIES KIT INSTRUCTION SHEET FOR 1-3/8" DOORS



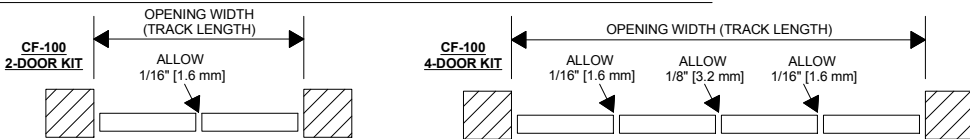
PARTS LIST (FOR 2 DOOR KIT)

CF-100-3 TOP PIVOT SPRING LOADED (1) 	CF-100-6 NYLON WHEEL GUIDE (1) 	CF-100 NYLON "T" BEARING (2) 	#6 X 1-1/2" FLATHEAD SCREWS (6) 	CF-100-4 PIVOT STUD (1)
CF-100-5 ANGLE BRACKET (1) 	CF-100-2 TOP PIVOT PLATE (1) 	CF-100 NYLON STEP NUT (2) 	#10 X 1-1/4" SCREWS (2) 	EXTRUDED ALUMINUM TRACK CF-100
CF-100-5 BOTTOM PIVOT PLATE (1) 	#10-24 X 1/4" PAN HEAD SCREW (2) 	#8 X 3/4" SCREWS (5) 	#10-24 X 1/4" PAN HEAD SCREW (2) 	SPECIFICATIONS: -LOAD CAPACITY: 20 LBS PER DOOR. -FOR 2-DOOR AND 4-DOOR APPLICATIONS. -IDEAL FOR LIGHT OR LOUVER TYPE DOORS.
	5/16" EXTERNAL TOOTH LOCK WASHER (2) 	5/16" HEX NUT (2) 		

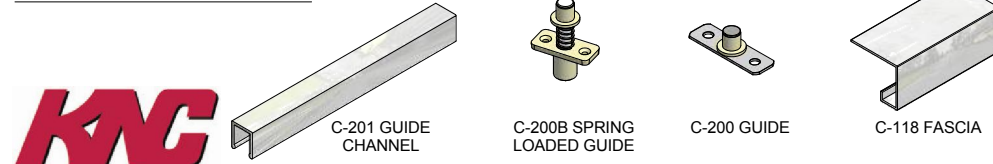
DIMENSION DETAILS:



PLAN VIEWS SHOWING CLEARANCE BETWEEN DOORS



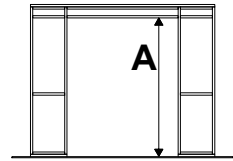
OPTIONAL PRODUCTS



INSTALLATION INSTRUCTIONS

STEP 1
DETERMINE DOOR SIZE/HEADER HEIGHT BASED ON DIMENSIONS SHOWN IN DETAIL VIEWS AND CLEARANCE REQUIRED BELOW DOOR:

- MINIMUM OPENING HEIGHT (A) = DOOR HEIGHT + 2"
- MAXIMUM OPENING HEIGHT (A) = DOOR HEIGHT + 3"

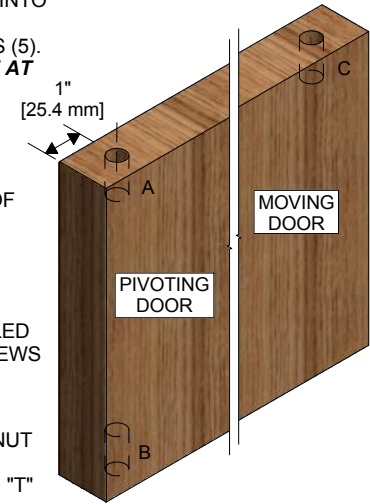


STEP 2

CUT TRACK TO LENGTH. TRACK LENGTH SHOULD EQUAL FINISHED OPENING SIZE LESS 1/8". INSERT CF-100 NYLON STEP NUT (1) INTO SLOT AT TOP OF TRACK (SEE BACK ILLUSTRATION FOR MORE DETAILS.) SECURE TRACK TO HEADER WITH #8 X 3/4" SCREWS (5). **NOTE: BEADED LIP OF TRACK (SEE *IN PARTS LIST) MUST BE AT FRONT OF OPENING.**

STEP 3

DRILL 1/2"Ø CLEARANCE HOLES AT LEAST 1" DEEP AT THE FOLLOWING LOCATIONS: ONE ON TOP(A) AND BOTTOM(B) CORNERS OF PIVOTING DOOR AND ONE ON TOP(C) CORNER OF MOVING DOOR. HOLES SHOULD BE 1" ON CENTRE FROM THE EDGE OF THE DOORS.



STEP 4

PLACE CF-100-3 TOP PIVOT ASSEMBLY, AND CF-100 NYLON "T" BEARING (2) IN THE RESPECTIVE HOLES ON THE DOORS DRILLED IN STEP 3. SECURE TO DOOR WITH #6 X 1-1/2" FLATHEAD SCREWS (6).

STEP 5

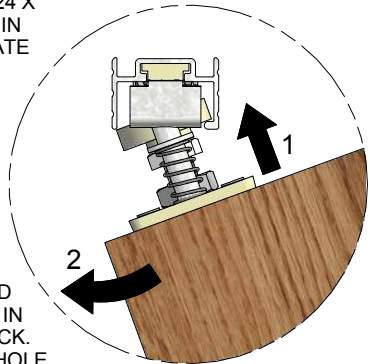
ASSEMBLE CF-100-6 NYLON WHEEL GUIDE (1) WITH 5/16" HEX NUT (1) ONTO "T" BEARING OF MOVING DOOR. ASSEMBLE CF-100-4 BOTTOM PIVOT STUD (1) AND 5/16" HEX NUT (1) ONTO BOTTOM "T" BEARING OF PIVOTING DOOR.

STEP 6

ASSEMBLE CF-100-2 TOP PIVOT PLATE WITH 5/16" EXTERNAL TOOTH LOCK WASHER (1), CF-100-2 TOP PIVOT PLATE (1), #10-24 X 1/4" PAN HEAD SCREW (1) AND SECURE TO STEP NUT PLACED IN TRACK FROM STEP 2. ASSEMBLE CF-100-5 BOTTOM PIVOT PLATE WITH 5/16" EXTERNAL TOOTH LOCK WASHER (1), CF-100-5 BOTTOM PIVOT PLATE (1), #10-24 X 1/4" PAN HEAD SCREW (1), ON TOP OF CF-100-5 ANGLE BRACKET (1) AND SECURE TO CF-100 NYLON STEP NUT BELOW. SECURE CF-100-5 BOTTOM PIVOT ASSEMBLY TO JAMB WITH #10-1-1/4" SCREWS (2) (SEE BACK ILLUSTRATION FOR MORE DETAILS.) **NOTE: DO NOT OVERTIGHTEN SCREWS WHEN MAKING ADJUSTMENTS**

STEP 7

DOOR SHOULD BE ASSEMBLED WITH HINGE (BY OTHERS) BY THIS STEP. FOLD DOORS AND INSERT CF-100-3 TOP PIVOT AND CF-100-6 WHEEL GUIDE INTO TRACK BY ANGLING THE DOORS IN ORDER TO GET THE WHEEL AROUND THE BEADED LIP OF TRACK. RAISE DOOR AND PLACE CF-100-4 BOTTOM PIVOT STUD INTO HOLE OF CF-100-5 BOTTOM PIVOT PLATE.



STEP 8

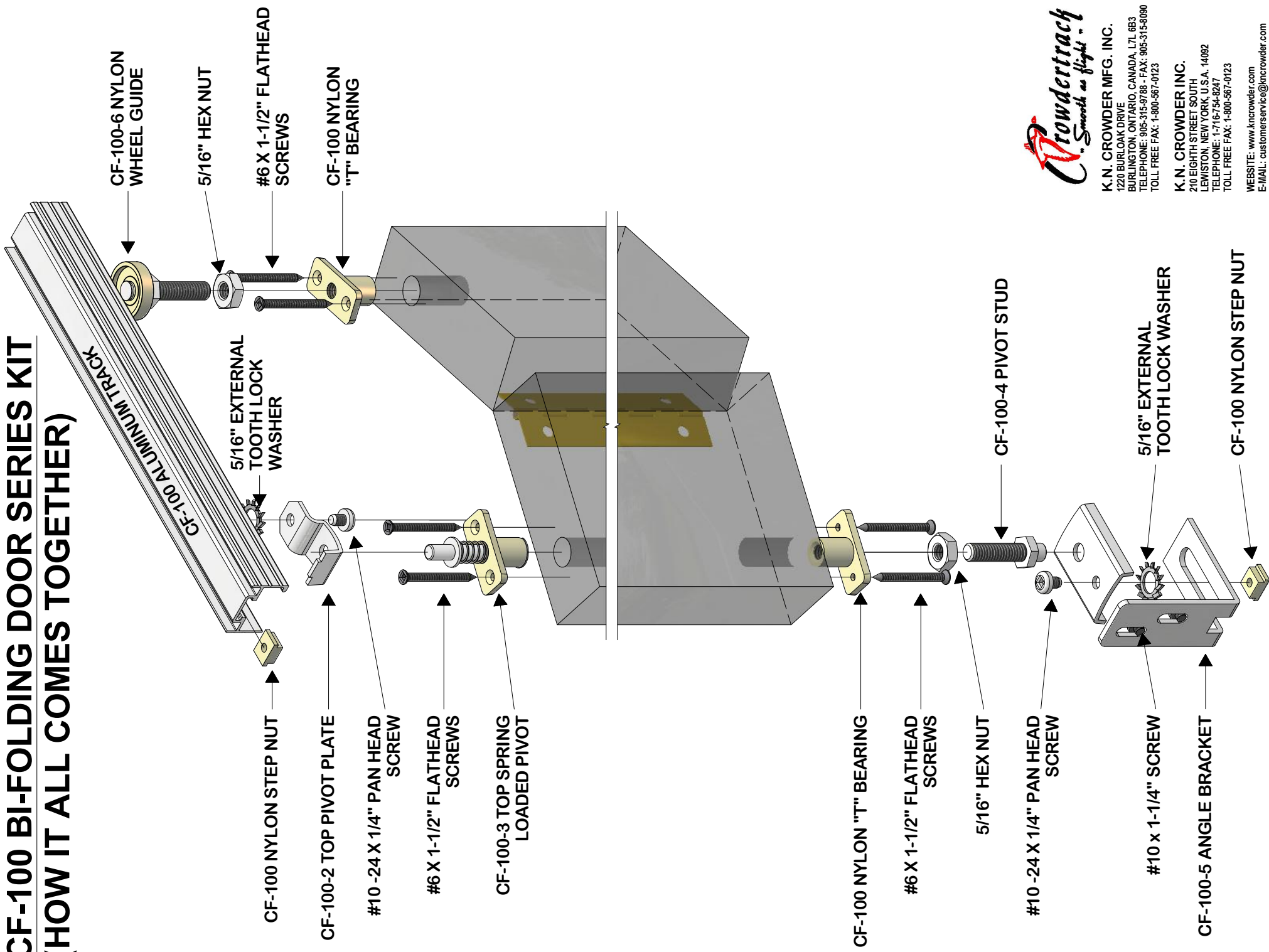
USING ADJUSTING NUTS ON BOTTOM PIVOT STUD AND HANGER, ADJUST DOOR FOR PLUMB AND CLEARANCE. USE 5/16" HEX NUTS AND #10-24 X 1/4" PAN HEAD SCREWS TO LOCK MODIFICATIONS.



K.N. CROWDER MFG. INC.
1220 BURLOAK DRIVE
BURLINGTON, ONTARIO, CANADA, L7L 6B3
TELEPHONE: 905-315-9788 - FAX: 905-315-8090
TOLL FREE FAX: 1-800-567-0123
WEBSITE: www.kncrowder.com -- E-MAIL: customerservice@kncrowder.com

K.N. CROWDER INC.
210 EIGHTH STREET SOUTH
LEWISTON, NEW YORK, U.S.A. 14092
TELEPHONE: 1-716-754-8247
TOLL FREE FAX: 1-800-567-0123

CF-100 BI-FOLDING DOOR SERIES KIT (HOW IT ALL COMES TOGETHER)



K.N. CROWDER MFG. INC.
 1220 BURLONK DRIVE
 BURLINGTON, ONTARIO, CANADA, L7L 6B3
 TELEPHONE: 905-315-9788 - FAX: 905-315-8090
 TOLL FREE FAX: 1-800-567-0123

K.N. CROWDER INC.
 210 EIGHTH STREET SOUTH
 LEWISTON, NEW YORK, U.S.A. 14092
 TELEPHONE: 1-716-754-8247
 TOLL FREE FAX: 1-800-567-0123

WEBSITE: www.kncrowder.com
 E-MAIL: customerservice@kncrowder.com