

# CF-115

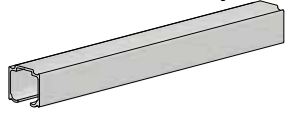
## Installation Instructions

KNC

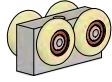
### Folding Systems

- Heavy-duty precision ball bearing nylon wheels
- Cycle tested up to 150,000 times
- For 1 3/8 in [34.9 mm] to 1 3/4 in [44.5 mm] thick doors
- For up to 50 lbs [22 kg] per door on a 2 door system

### Parts List (based on 2 door system)



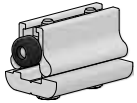
**C-400 Top Mount Track x length (1)**  
Length = opening size



**CF-115 Hanger Body (1)**



**CF-115-TP Top Plate (2)**



**CF-115-1 Top Pivot Track Assembly (1)**



**CF-115 Top Pivot Stud (1)**



**C-493 Easy Connect Stud (1)**



**#10 x 1-1/4" Pan Head Screws (9)**  
[FT4]



**CF-115-4 Bottom Pivot Plate (1)**



**CF-115 Bottom Pivot Stud (1)**



**5/16-18 K-Lock Nut (1)**  
[FT17]



**#8 x 3/4" Pan Head Screws (10)**  
[FT2]



**#10 x 1-1/2" Flat Head Screws (2)**  
[FT7]



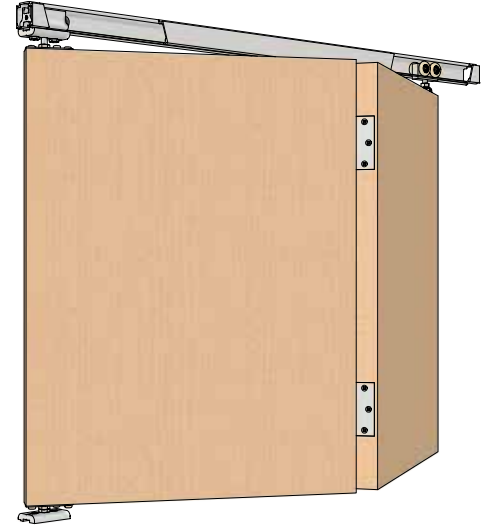
**5/16-18 Jam Nut (2)**  
[FT16]



**CF-115-EC Easy Connect Top Plate (1)**

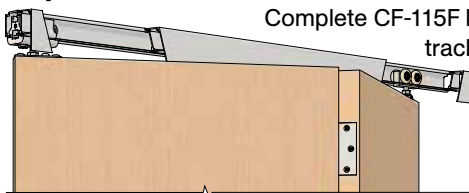


**C-AR93 Adjustment Rod**

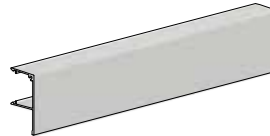


Complete CF-115 kit illustrated.  
Cut-outs in track to expose components.  
Hinges by others.

### Optional Add-on Products

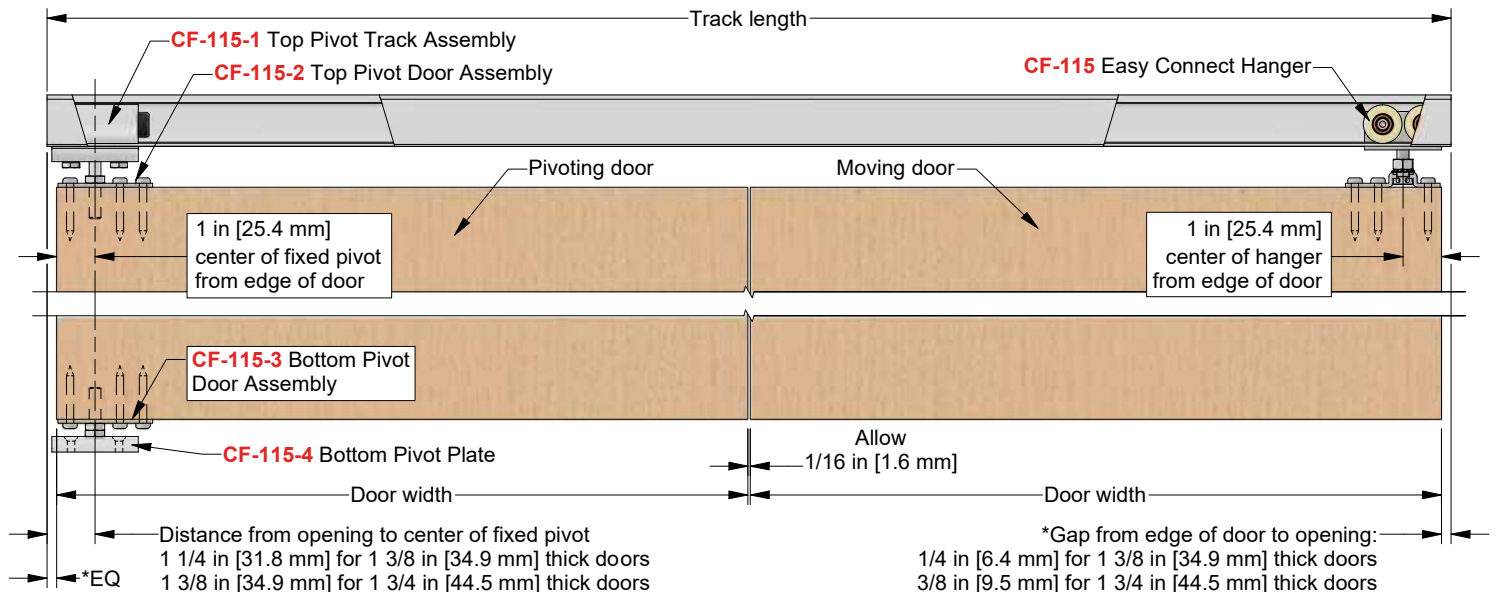


Complete CF-115F kit illustrated. Cut-outs in track to expose components



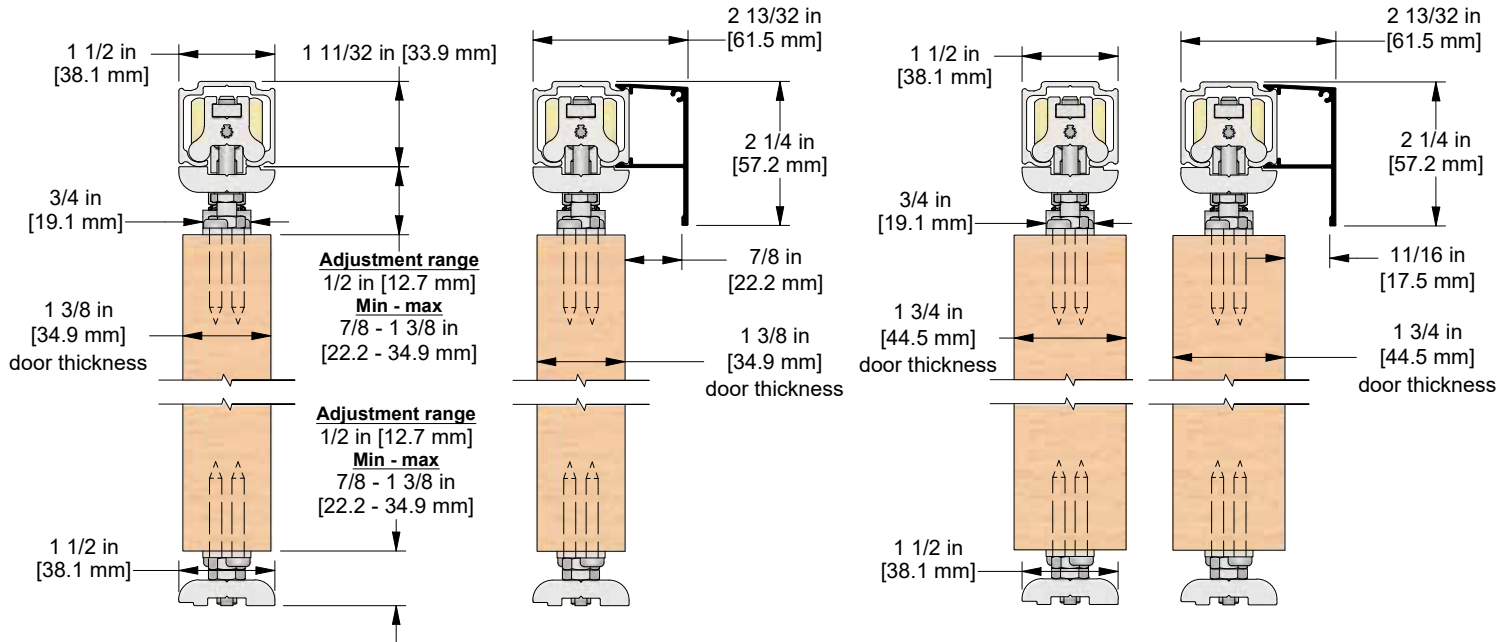
**C-225 Snap-on Fascia x length (1)**  
Length = same as track length, example:  
72 in [1829 mm] track = 72 in [1829 mm] fascia

### Elevation View



# Product Details and Dimensions

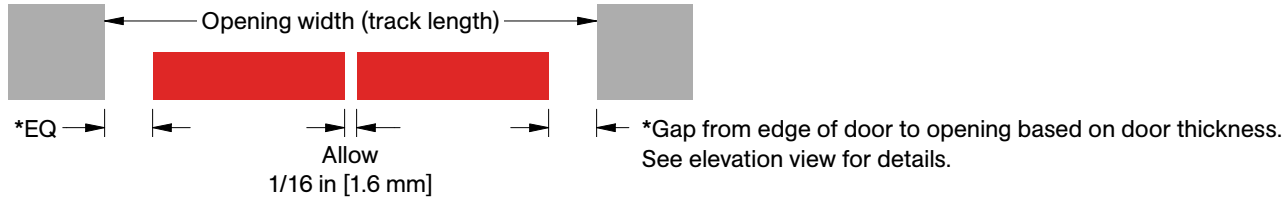
## Section View



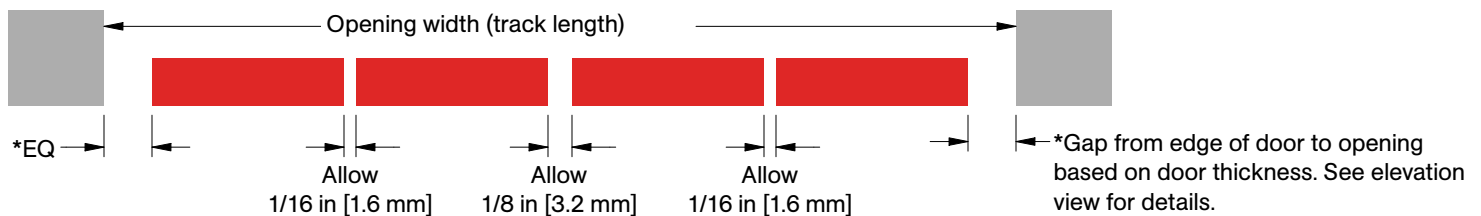
## Plan View

Showing recommended clearance between doors

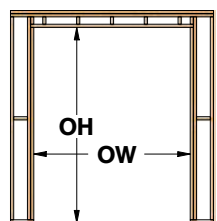
### For 2 door applications



### For 4 door applications (2 doors to each side of opening)



## Required Pre-Installation



### Opening Height

Opening height = door height +  $3 \frac{19}{32}$  in [91.3 mm] based on mid-adjustment range dimensions

### Opening Width

For  $1 \frac{3}{8}$  in [34.9 mm] thick doors

2 door opening width =  $2 \times$  door width +  $\frac{9}{16}$  in [14.3 mm]

4 door opening width =  $4 \times$  door width +  $\frac{3}{4}$  in [19.1 mm]

For  $1 \frac{3}{4}$  in [44.5 mm] thick doors

2 door opening width =  $2 \times$  door width +  $\frac{13}{16}$  in [20.6 mm]

4 door opening width =  $4 \times$  door width + 1 in [25.4 mm]

# Installation Steps

**Note:** Installation steps below are based on 2 door bi-folding system with fixed pivot on left side for demonstration purposes.

## Step #1:

Determine door size, header height, track position and bottom clearance based on the kit code ordered by using dimensions shown in detail views on previous page.

## Step #2:

**Note:** If access to the ends of track is not available, step #3 must be completed before step #2.

Cut C-400 aluminum track to size if required, typically 2 x the door width. Locate and pre-drill Ø3/16 in [4.8 mm] holes through center of track. Secure track to structural support/header with #8 x 3/4" Pan Head Screws [FT2], quantity of 10 are supplied.

**Note:** Solid support is required and spacing is recommended to be between 12-16 in [300-400 mm] on center. Consult structural engineer to ensure adequate support and fastening.

## Step #3:

Insert CF-115-1 Top Pivot Track assembly and CF-115 Hanger assembly into track.

**Note:** Bottom portion of CF-115-1 Top Pivot Track Assembly as marked in fig. A should face towards outside of opening. If the bumper and bottom portion do not allow for correct orientation in track follow steps below for rotating plate.

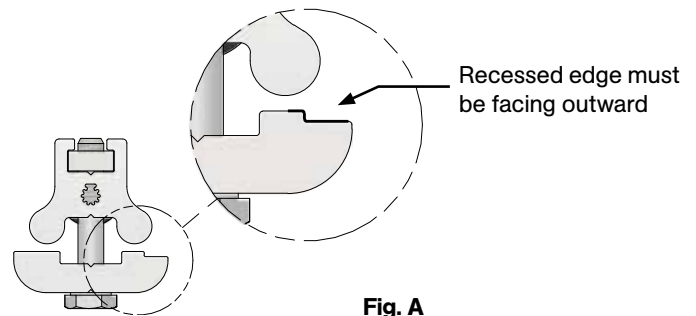
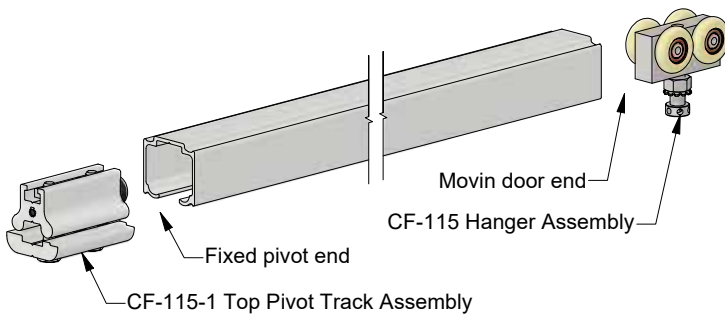
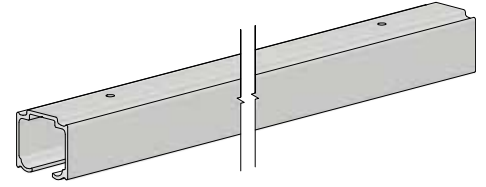
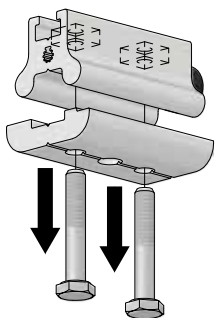


Fig. A

## Step #3a:

Unscrew and remove hex bolts from CF-115-1 Top Pivot Track Assembly.



## Step #3b:

Remove bottom portion from CF-115-1 Top Pivot Track Assembly and rotate 180°.

Fig. 1

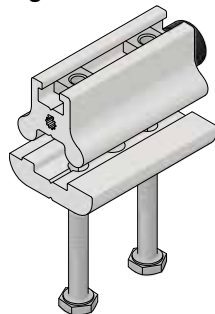


Fig. 2

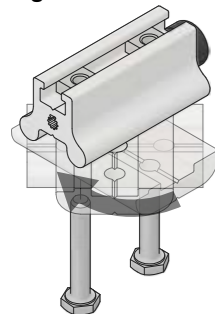
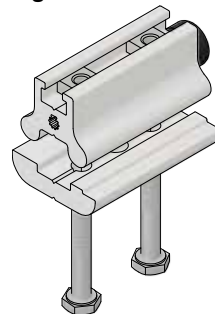
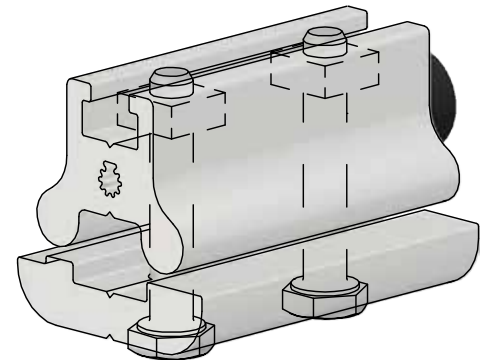


Fig. 3



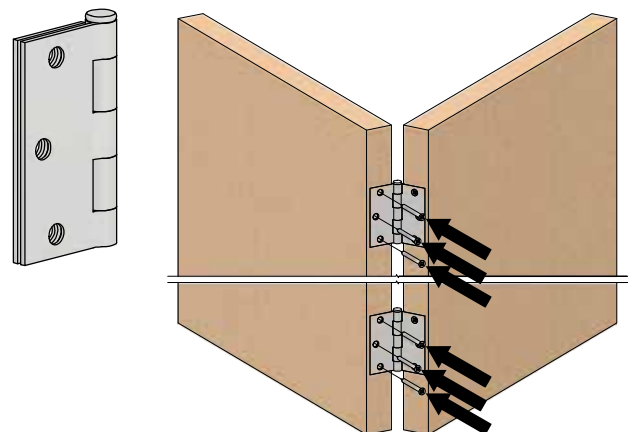
## Step #3c:

Re-secure plate with hex bolts back through plate into body by ensuring that square nuts in top portion of CF-115-1 Top Pivot Track Assembly are aligned with bolts.



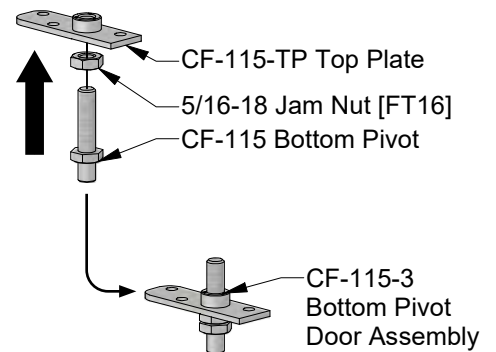
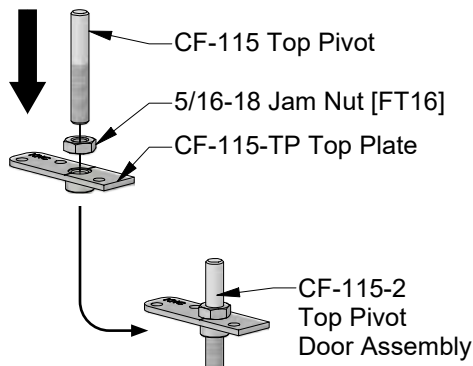
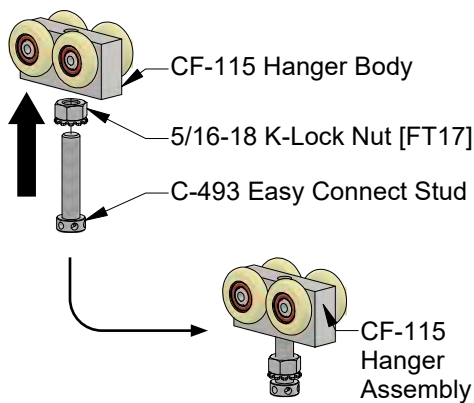
## Step #4:

Install hinges by others on doors as per manufacturer's instructions. Butt hinges are recommended.

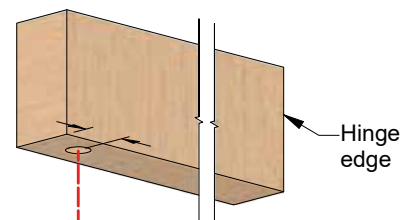
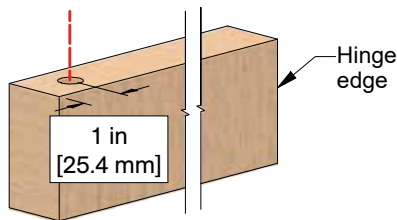


**Step #5:**

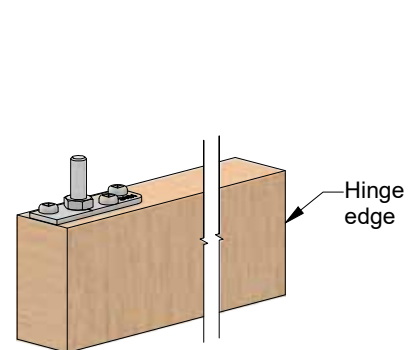
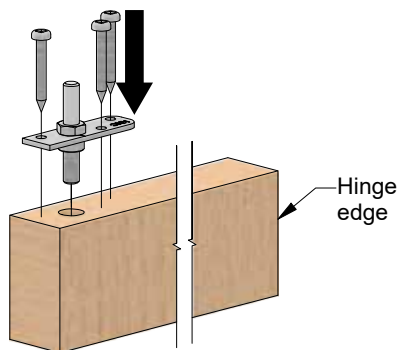
Assemble all door hardware as shown:

**Step #6:**

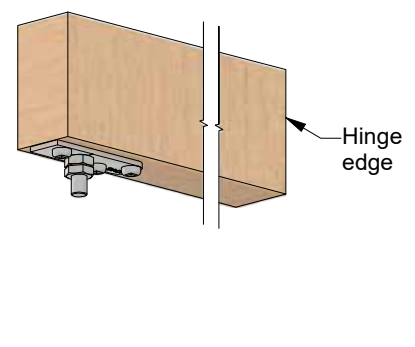
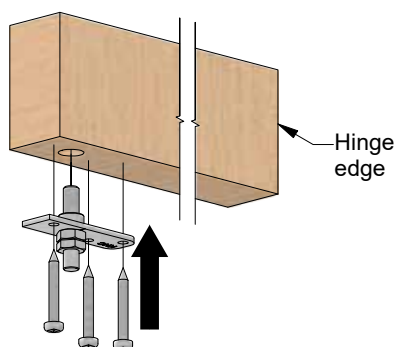
For top and bottom on pivoting door only, mark and drill 2 x Ø1/2 in [12.7 mm] clearance holes, 1 in [25.4 mm] away from edge of door, opposite hinge edge, at least 2 in [50.8 mm] deep in middle of door thickness.

**Step #7:**

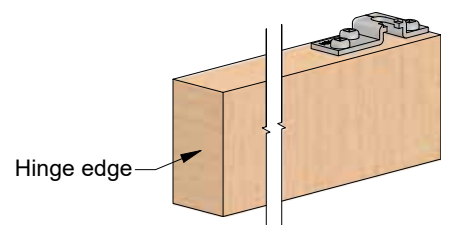
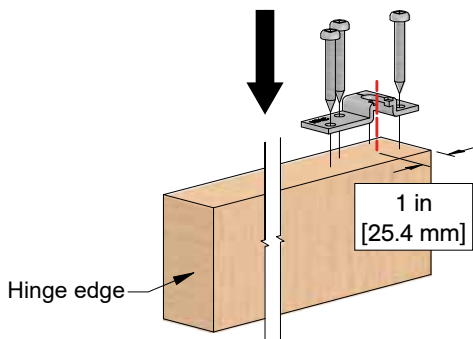
Place center of CF-115-2 Top Pivot Door Assembly on top of door, engaging with clearance hole. Ensure CF-115-TP Top Plate is aligned parallel to door. Mark screw hole locations and pre-drill Ø1/8 in [3.2 mm] holes at least 1 1/2 in [38.1 mm] deep. Secure with #10 x 1-1/4" Pan Head Screws [FT4].

**Step #8:**

Repeat **step #7** on door bottom with CF-115-3 Bottom Pivot Door assembly.

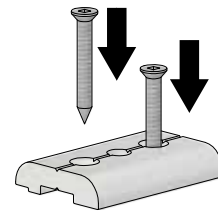
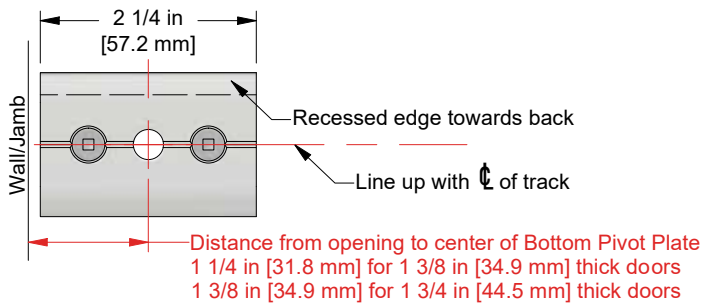
**Step #9:**

On top of moving door only, locate center of "U" slot of CF-115-EC Easy Connect Top Plate, 1 in [25.4 mm] away from edge of door, opposite hinge edge. Mark screw hole locations and pre-drill Ø1/8 in [3.2 mm] holes at least 1 1/2 in [38.1 mm] deep. Secure CF-115-EC Easy Connect Top Plate with #10 x 1-1/4" Pan Head Screws [FT4].

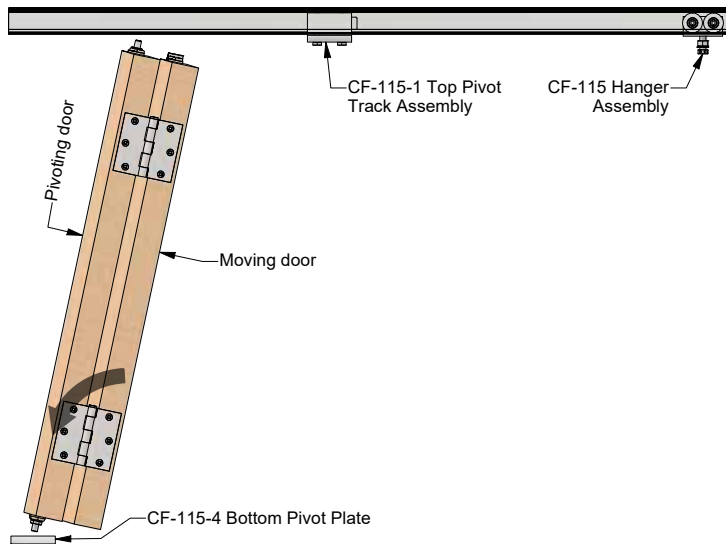


**Step #10:**

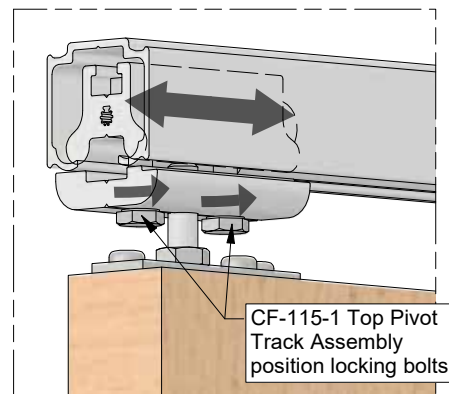
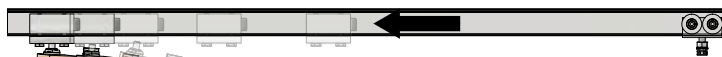
Locate and secure CF-115-4 Bottom Pivot Plate on floor with #10 x 1-1/2" Flat Head Screws [FT7]. See details right for location.

**Step #11:**

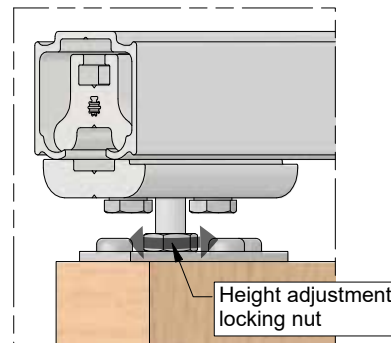
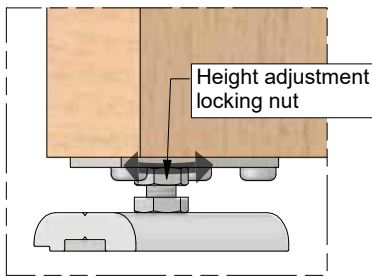
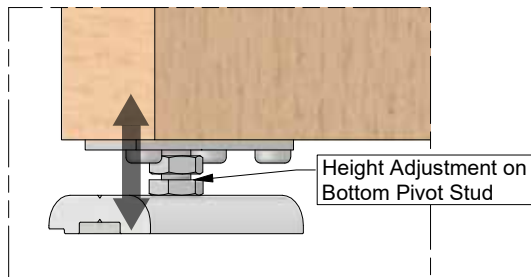
Move CF-115-1 Top Pivot Track assembly into middle of opening.

**Step #12:**

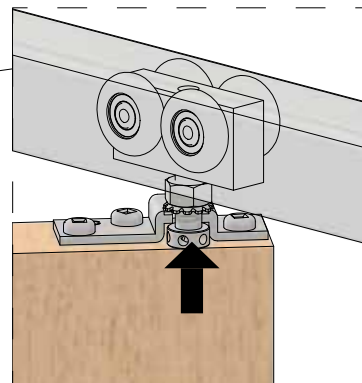
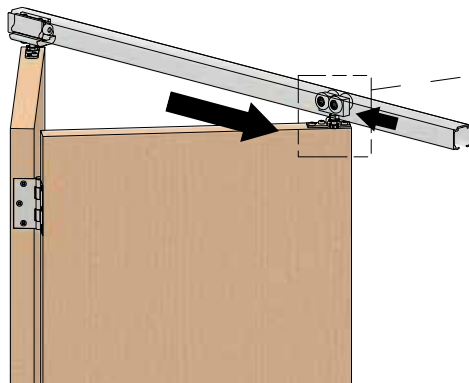
Fold doors together and angle them perpendicular, 90°, to the opening. Engage CF-115 Bottom Pivot Stud with CF-115-4 Bottom Pivot Plate. Tilt door upwards until CF-115 Top Pivot Stud is just below the C-400 Track. Move CF-115-1 Top Pivot Track assembly above CF-115 Top Pivot Stud so that as the door is tilted vertically the CF-115 Top Pivot Stud engages the CF-115-1 Top Pivot Track assembly. Continue to tilt door until vertical plumbness is achieved. Secure CF-115-1 Top Pivot assembly by tightening two bolts using 1/2 in [12.7 mm] wrench.

**Step #13:**

Adjust height of door if necessary, by turning CF-115 Bottom Pivot Stud using 1/2 in [12.7 mm] wrench and/or adjusting CF-115 Top Pivot Stud accordingly. Secure height adjustment with 5/16-18 Jam Nuts [FT16] at top and bottom using 1/2 in [12.7 mm] wrench.

**Step #14:**

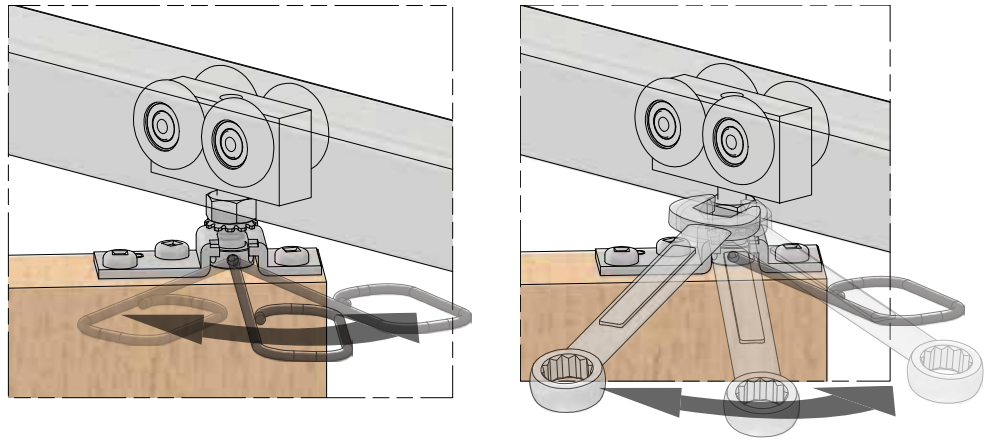
Unfold door out and engage C-493 Easy Connect Stud with CF-115-EC Easy Connect Top Plate.





### Step #15

Test bi-folding operation and if necessary, use C-AR93 Adjustment Rod to make adjustments to C-493 Easy Connect Stud height until door operates without interference. Tighten 5/16-18 K-Lock Nut [FT17] using 1/2 in wrench to secure hanger height adjustment.



## Optional C-225 Fascia Installation

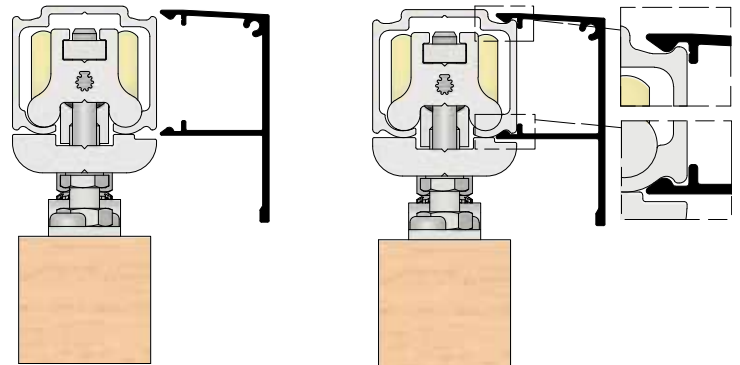
### Step #F1:

Cut C-225 Fascia to correct length as required. Typically, fascia is same length as track previously installed.

### Step #F2:

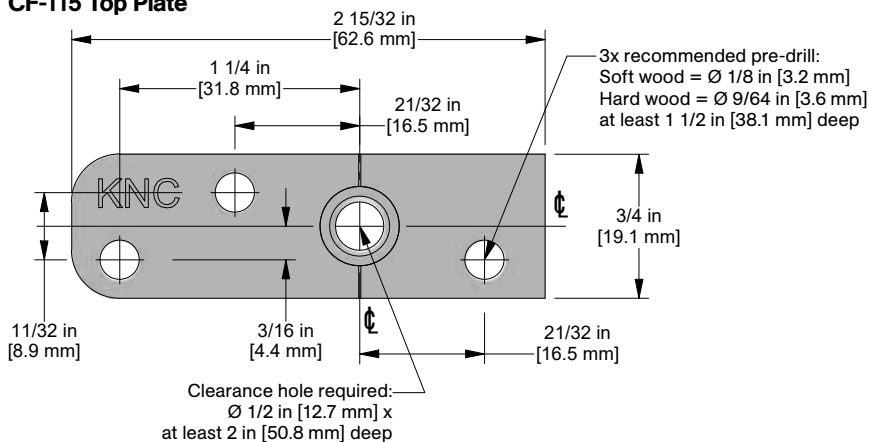
Lift fascia up to track and snap on as shown.

**Note: If fascia is loose and a tighter fit is desired, use a rubber mallet on inside leg of fascia to reduce gap at +/- 24 in [610 mm] intervals.**



## Top Plate Template

### CF-115 Top Plate



### CF-115-EC Top Plate

