

CF-115

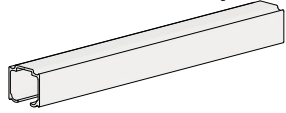
Installation Instructions

KNC

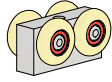
Folding Systems

- Heavy-duty precision ball bearing nylon wheels
- Cycle tested up to 150,000 times
- For 1 3/8 in [34.9 mm] to 1 3/4 in [44.5 mm] doors
- For up to 50 lbs [22 kg] per door on a 2 door system

Parts List (based on 2 door system)



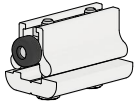
C-400 Top Mount Track x length (1)
Length = opening size



CF-115 Hanger Body (1)



CF-115-TP Top Plates (2)



CF-115-1 Top Pivot Track Assembly (1)



CF-115 Top Pivot Stud (1)



C-493 Easy Connect Stud (1)



#10 x 1-1/4" Pan Head Screws (9) [FT4]



CF-115-4 Bottom Pivot Plate (1)



CF-115 Bottom Pivot Stud (1)



5/16-18 K-Lock Nut (1) [FT17]



#8 x 3/4" Pan Head Screws (10) [FT2]



#10 x 1-1/2" Flat Head Screws (2) [FT7]



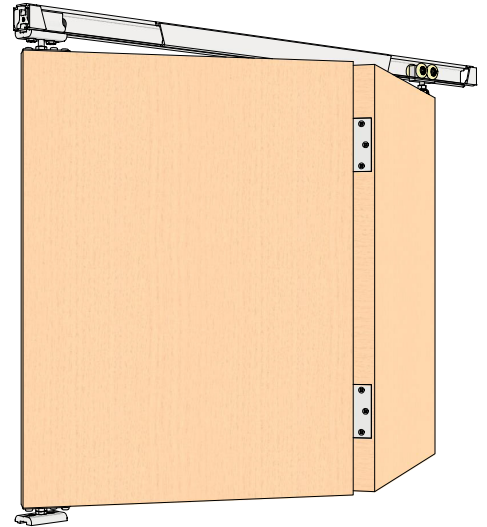
5/16-18 Jam Nuts (2) [FT16]



CF-115-EC Easy Connect Top Plate (1)

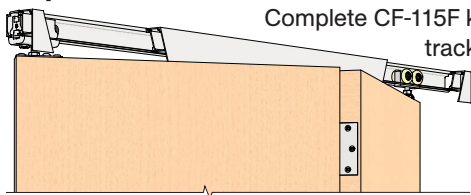


C-AR93 Adjustment Rod

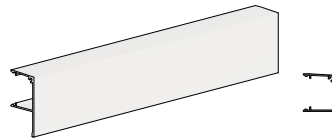


Complete CF-115 kit illustrated. Cut-outs in track to expose components. Hinges by others.

Optional Add-on Products

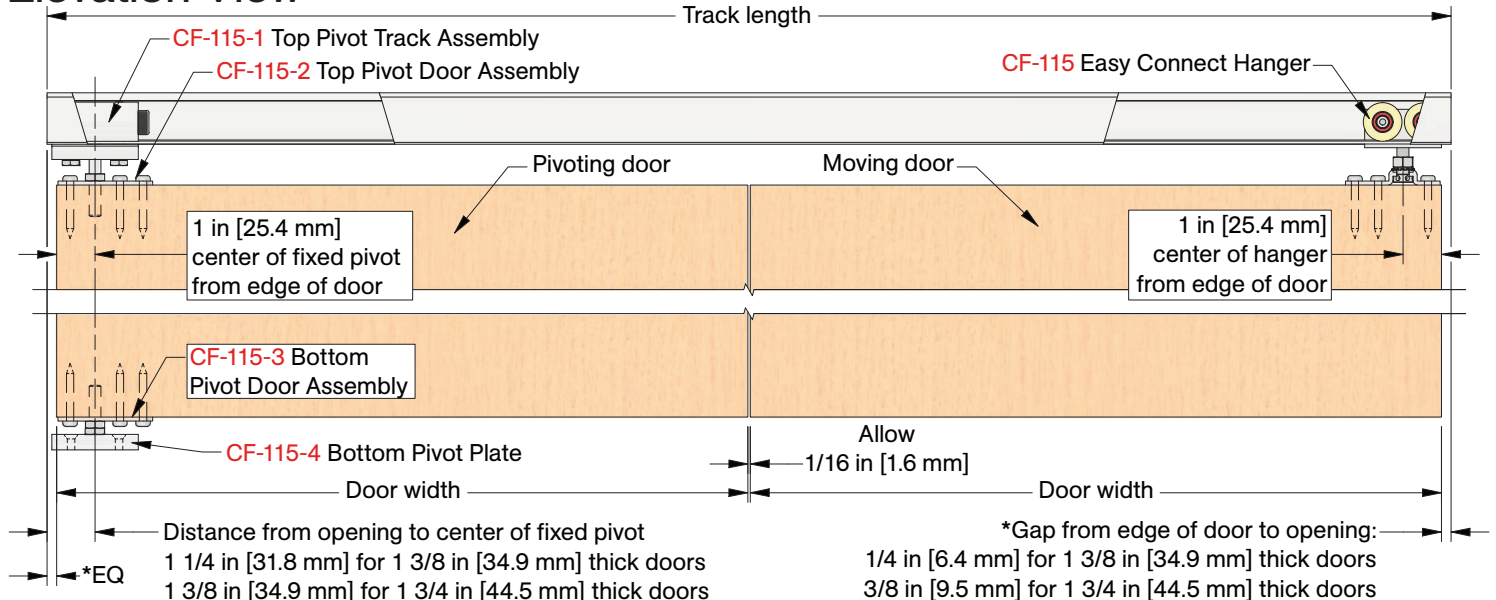


Complete CF-115F kit illustrated. Cut-outs in track to expose components



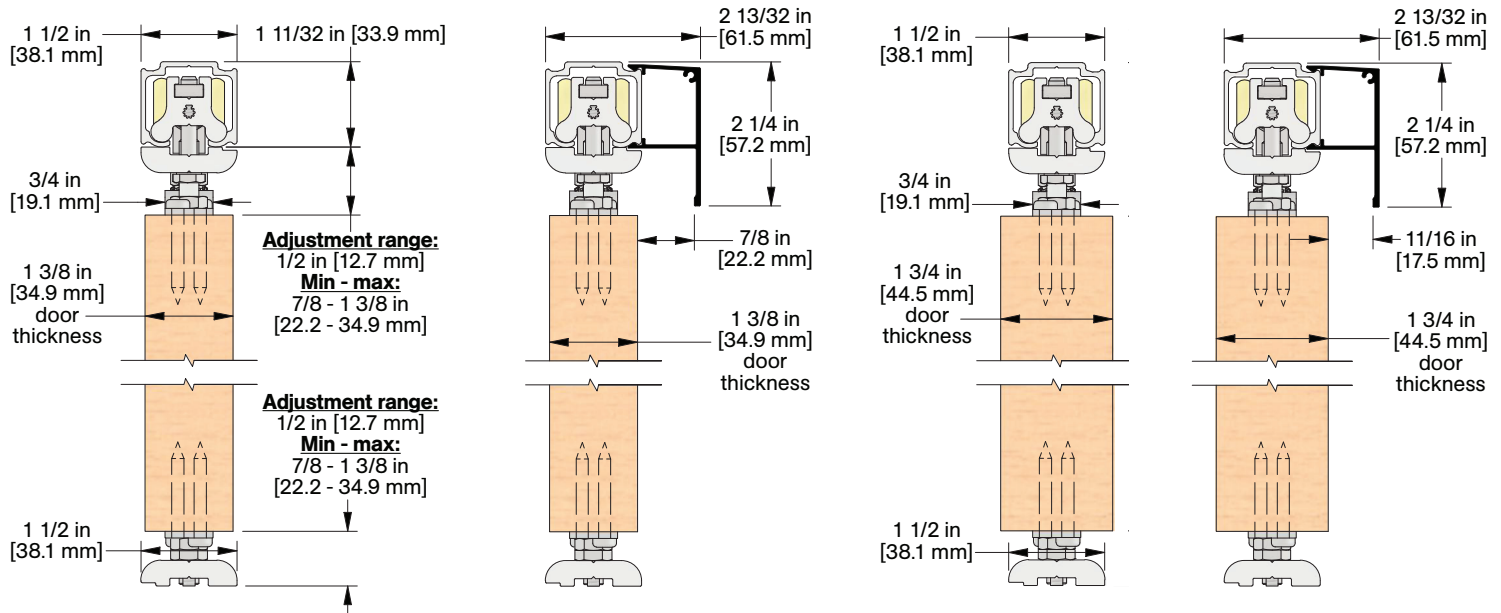
C-225 Snap-on Fascia x length (1)
Length = same as track length, example:
72 in [1829 mm] track = 72 in [1829 mm] fascia

Elevation View



Product Details and Dimensions

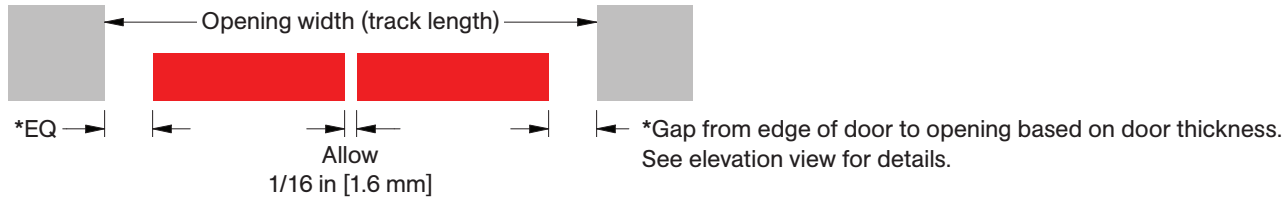
Section View



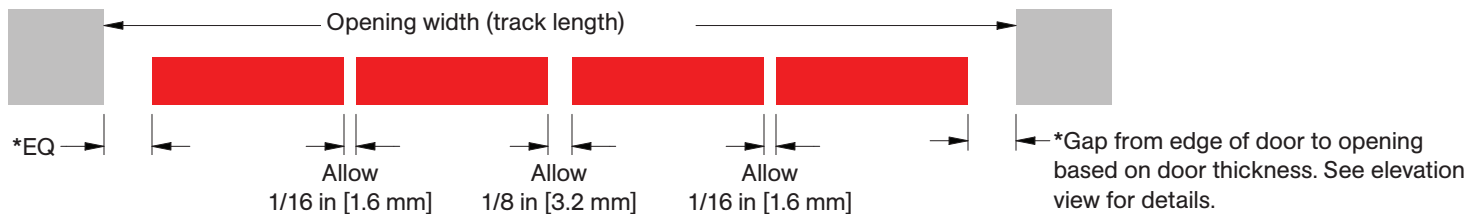
Plan View

Showing recommended clearance between doors

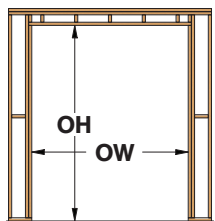
For 2 door applications



For 4 door applications (2 doors to each side of opening)



Required Pre-Installation



Opening Height

Opening height = door height + 3 19/32 in [91.3 mm] based on mid-adjustment range dimensions

Opening Width

For 1 3/8 in [34.9 mm] thick doors

2 door opening width = 2 x door width + 9/16 in [14.3 mm]

4 door opening width = 4 x door width + 3/4 in [19.1 mm]

For 1 3/4 in [44.5 mm] thick doors

2 door opening width = 2 x door width + 13/16 in [20.6 mm]

4 door opening width = 4 x door width + 1 in [25.4 mm]

Installation Steps

Note: Installation steps below are based on 2 door bi-folding system with fixed pivot on left side for demonstration purposes.

Step #1:

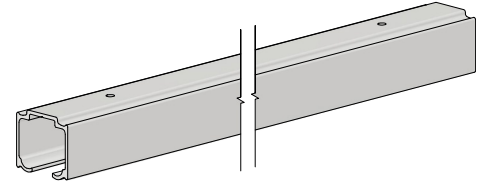
Determine door size, header height, track position, and bottom clearance based on kit code ordered by using dimensions shown in detail views on previous page.

Step #2:

Note: If access to ends of track is not available, step #3 must be completed before step #2.

Cut C-400 aluminum track to size if required, typically 2 x door width. Locate and pre-drill Ø3/16 in holes through center of track. Secure track to structural support/header with #8 x 3/4" Pan Head Screws [FT2], quantity of ten (10) are supplied.

Note: Solid support is required and spacing is recommended to be between 12-16 in [300-400 mm] on center. Consult structural engineer to ensure adequate support and fastening.



Step #3:

Insert CF-115-1 Top Pivot Track assembly and CF-115 Hanger assembly into track.

Note: Bottom portion of CF-115-1 Top Pivot Track Assembly as marked in fig. A should face towards outside of opening. If bumper and bottom portion do not allow for correct orientation in track, follow steps below for rotating plate.

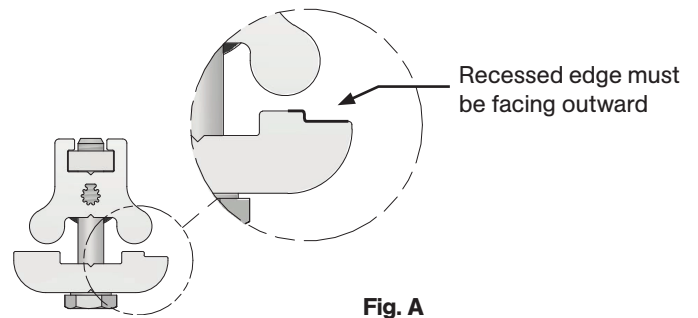
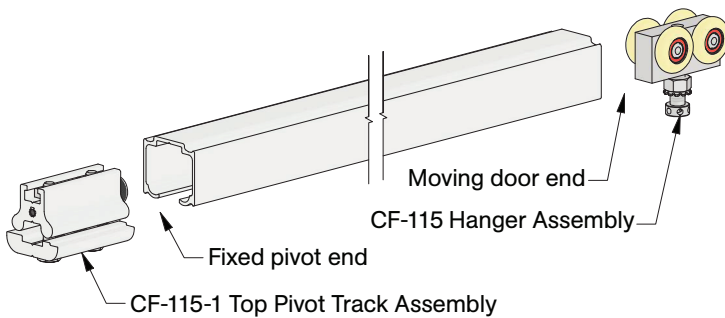
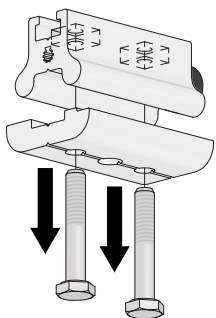


Fig. A

Step #3a:

Unscrew and remove hex bolts from CF-115-1 Top Pivot Track Assembly.



Step #3b:

Remove bottom portion from CF-115-1 Top Pivot Track Assembly and rotate 180°.

Fig. 1

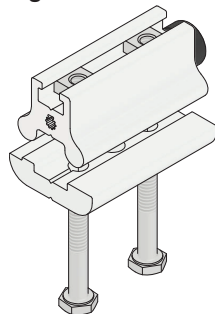


Fig. 2

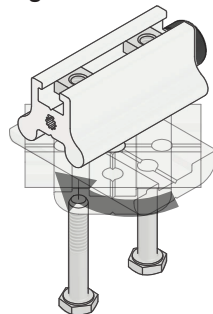
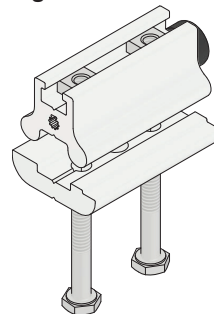
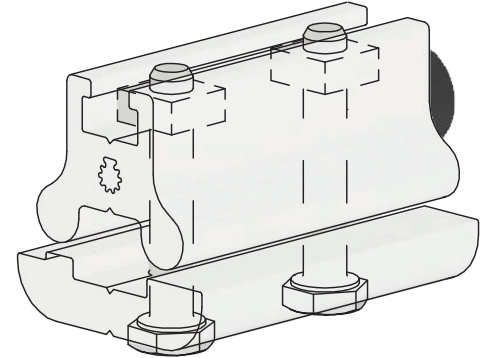


Fig. 3



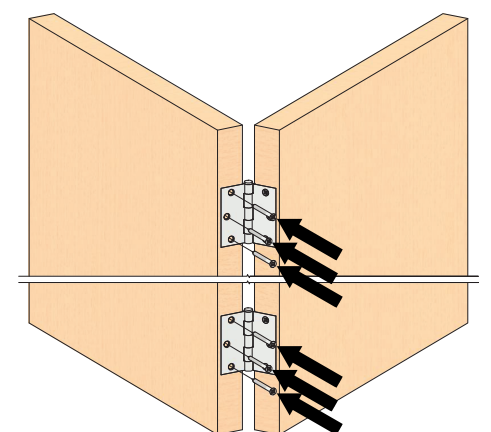
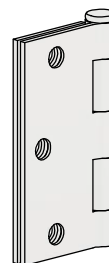
Step #3c:

Re-secure plate with hex bolts back through plate into body by ensuring that square nuts in top portion of CF-115-1 Top Pivot Track Assembly are aligned with bolts.



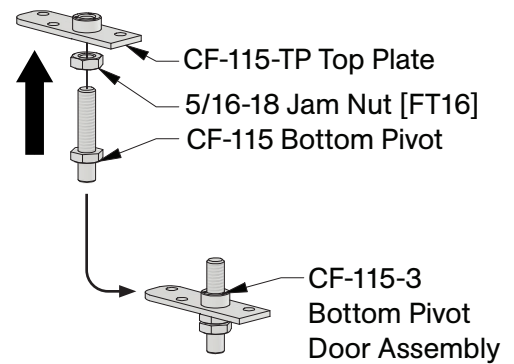
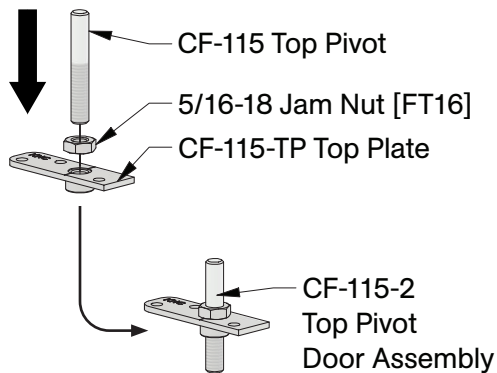
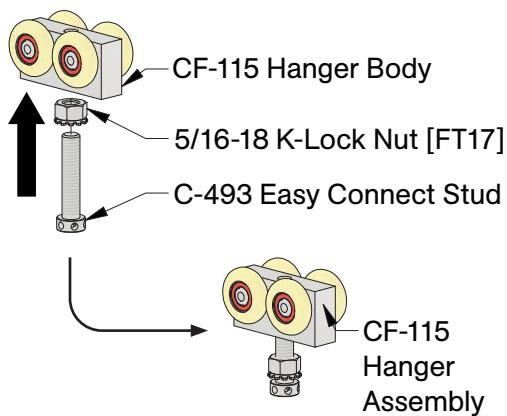
Step #4:

Install hinges by others on doors as per manufacturer's instructions. Butt hinges are recommended.

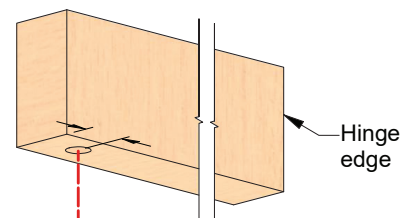
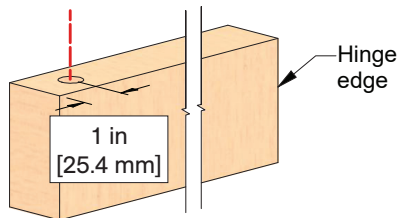


Step #5:

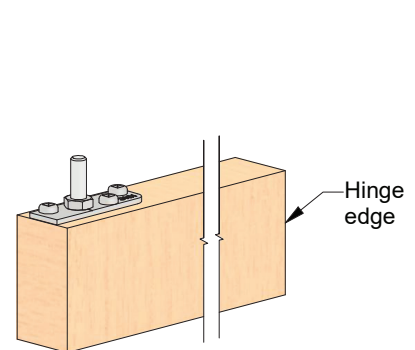
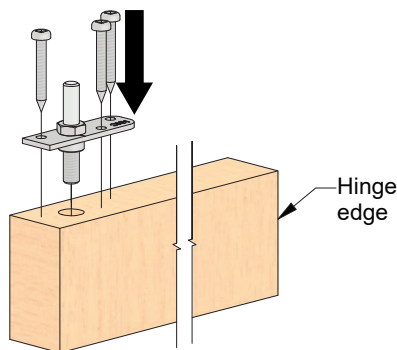
Assemble all door hardware as shown:

**Step #6:**

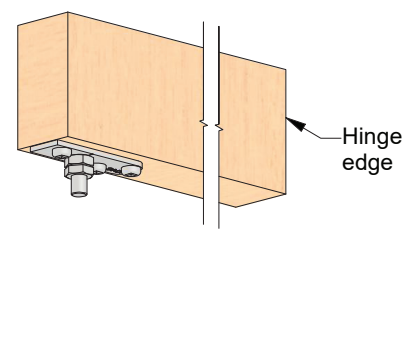
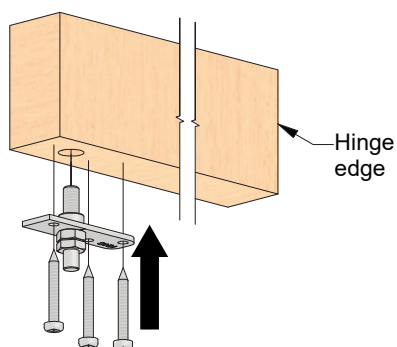
For top and bottom on pivoting door only, mark and drill 2 x Ø1/2 in [12.7 mm] clearance holes, 1 in [25.4 mm] away from edge of door, opposite hinge edge, at least 2 in [50.8 mm] deep in middle of door thickness.

**Step #7:**

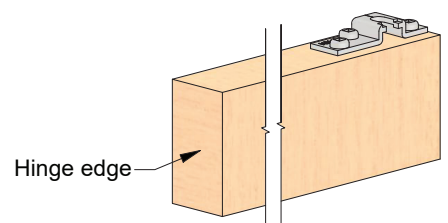
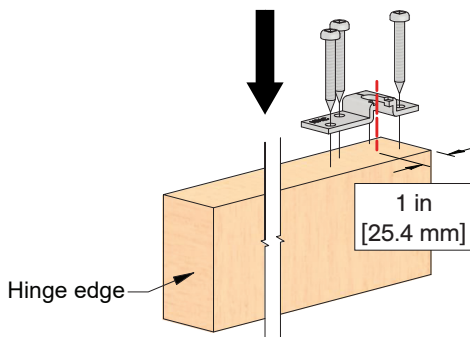
Place center of CF-115-2 Top Pivot Door Assembly on top of door, engaging with clearance hole. Ensure CF-115-TP Top Plate is aligned parallel to door. Mark screw hole locations and pre-drill Ø1/8 in [3.2 mm] holes at least 1 1/2 in [38.1 mm] deep. Secure with three (3) #10 x 1-1/4" Pan Head Screws [FT4].

**Step #8:**

Repeat **step #7** on door bottom with CF-115-3 Bottom Pivot Door assembly.

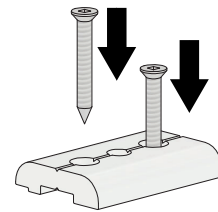
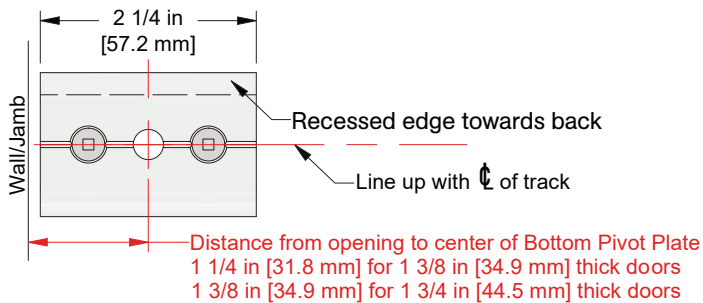
**Step #9:**

On top of moving door only, locate center of "U" slot of CF-115-EC Easy Connect Top Plate, 1 in [25.4 mm] away from edge of door, opposite hinge edge. Mark screw hole locations and pre-drill Ø1/8 in [3.2 mm] holes at least 1 1/2 in [38.1 mm] deep. Secure CF-115-EC Easy Connect Top Plate with three (3) #10 x 1-1/4" Pan Head Screws [FT4].

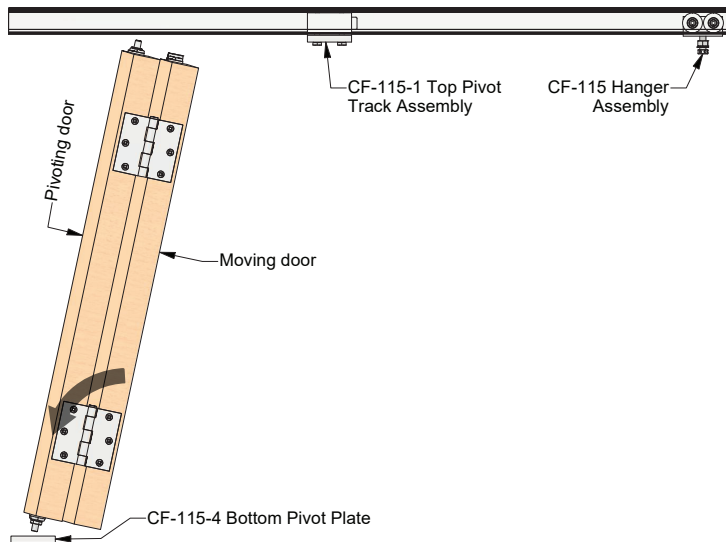


Step #10:

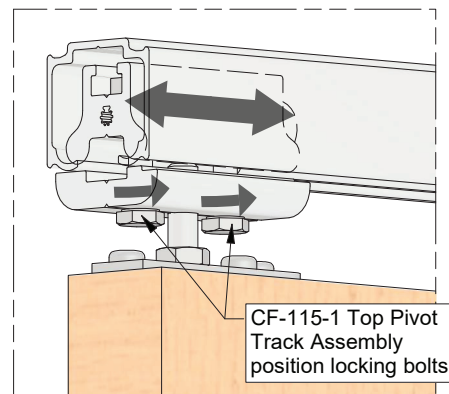
Locate and secure CF-115-4 Bottom Pivot Plate on floor with #10 x 1-1/2" Flat Head Screws [FT7]. See details right for location.

**Step #11:**

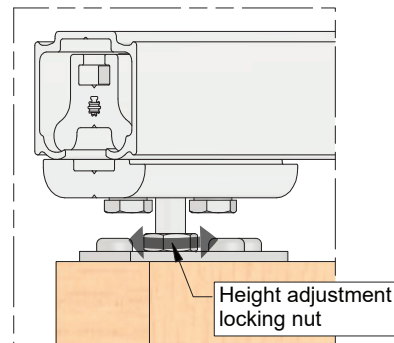
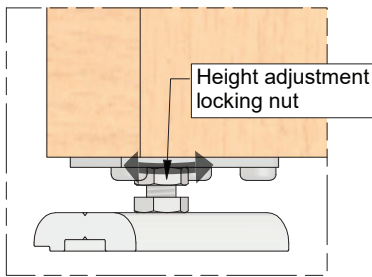
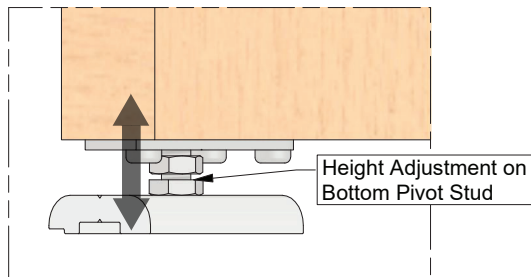
Move CF-115-1 Top Pivot Track assembly into middle of opening.

**Step #12:**

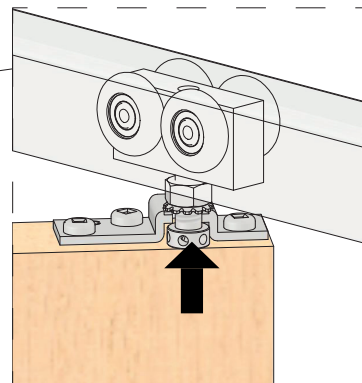
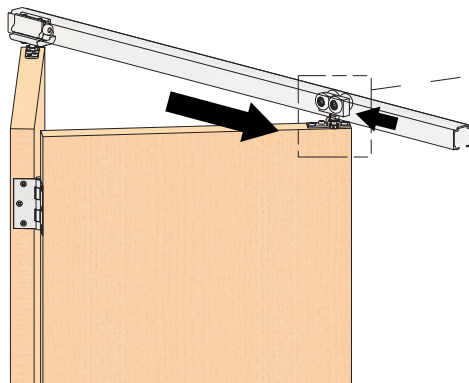
Fold doors together and angle them perpendicular, 90°, to the opening. Engage CF-115 Bottom Pivot Stud with CF-115-4 Bottom Pivot Plate. Tilt door upwards until CF-115 Top Pivot Stud is just below the C-400 Track. Move CF-115-1 Top Pivot Track assembly above CF-115 Top Pivot Stud so that as the door is tilted vertically the CF-115 Top Pivot Stud engages the CF-115-1 Top Pivot Track assembly. Continue to tilt door until vertical plumbness is achieved. Secure CF-115-1 Top Pivot assembly by tightening two bolts using 1/2 in [12.7 mm] wrench.

**Step #13:**

Adjust height of door if necessary, by turning CF-115 Bottom Pivot Stud using 1/2 in [12.7 mm] wrench and/or adjusting CF-115 Top Pivot Stud accordingly. Secure height adjustment with 5/16-18 Jam Nuts [FT16] at top and bottom using 1/2 in [12.7 mm] wrench.

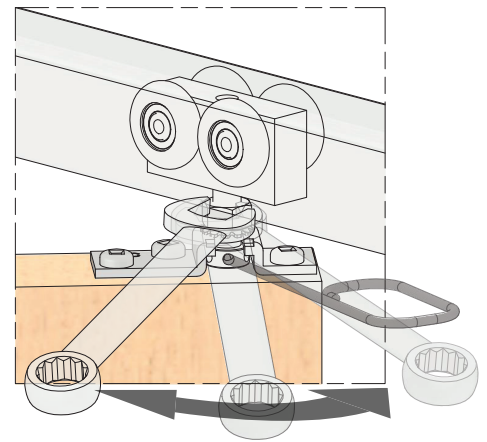
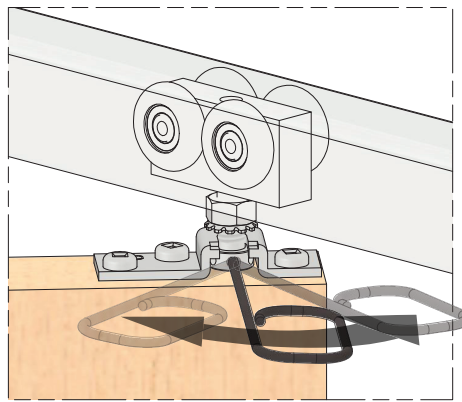
**Step #14:**

Unfold door out and engage C-493 Easy Connect Stud with CF-115-EC Easy Connect Top Plate.



Step #15

Test bi-folding operation and if necessary, use C-AR93 Adjustment Rod to make adjustments to C-493 Easy Connect Stud height until door operates without interference. Tighten 5/16-18 K-Lock Nut [FT17] using 1/2 in wrench to secure hanger height adjustment.



Optional C-225 Fascia Installation

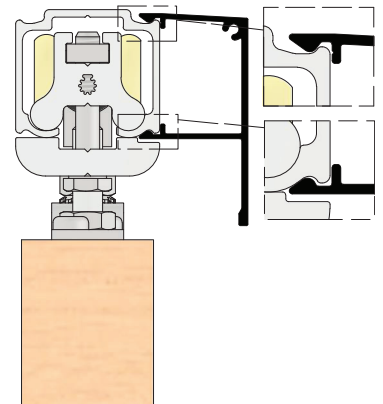
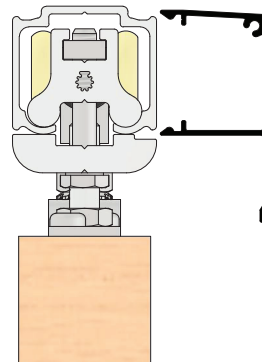
Step #F1:

Cut C-225 Fascia to match track length.

Step #F2:

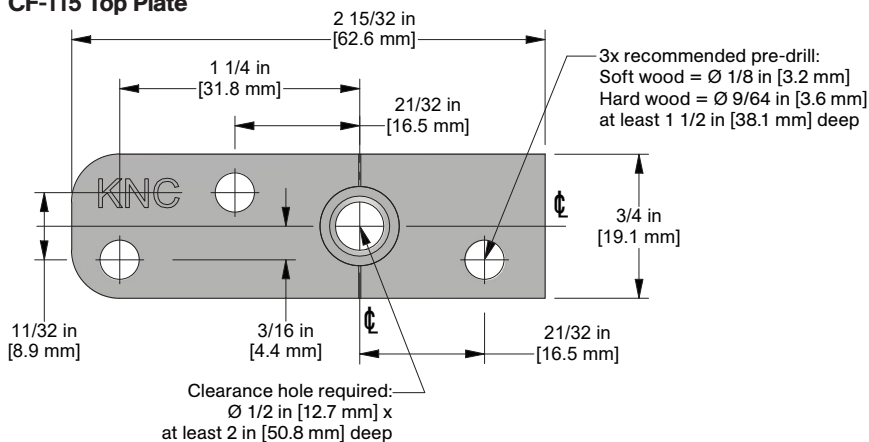
Lift fascia up to track and snap on as shown.

Note: If fascia is loose, use a rubber mallet on inside leg at 24 in [610 mm] intervals to tighten fit.



Top Plate Template

CF-115 Top Plate



CF-115-EC Top Plate

