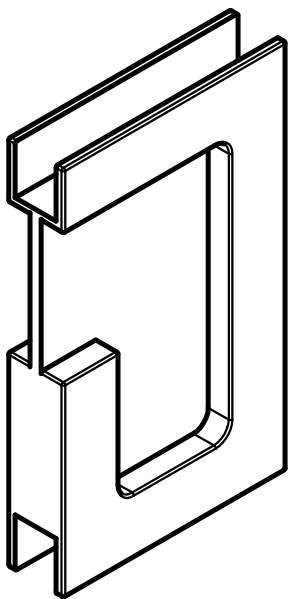


# CGP-038

## Glass Door Edge Pull

Installation Instructions

Suitable for 3/8 in [9.5 mm] glass door



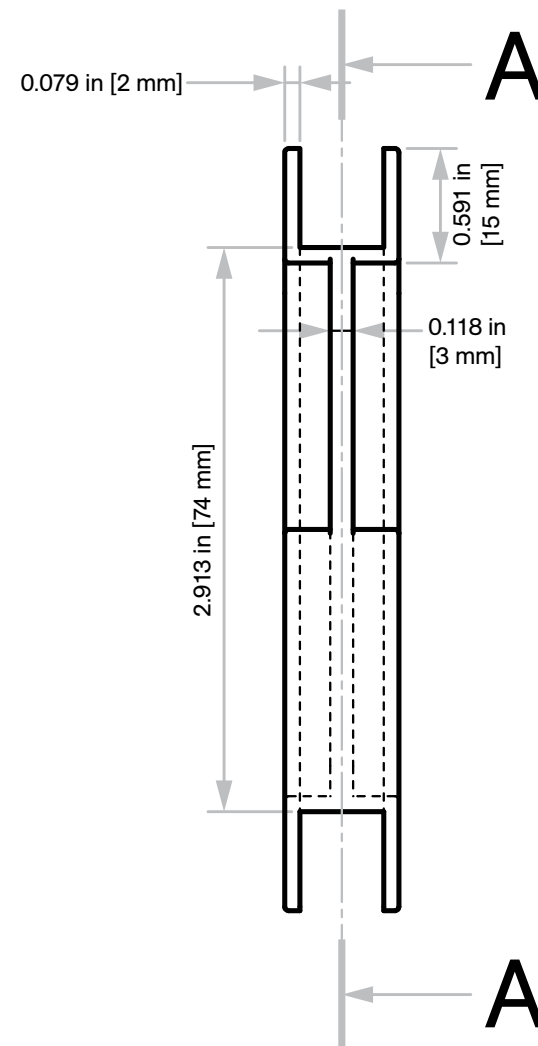
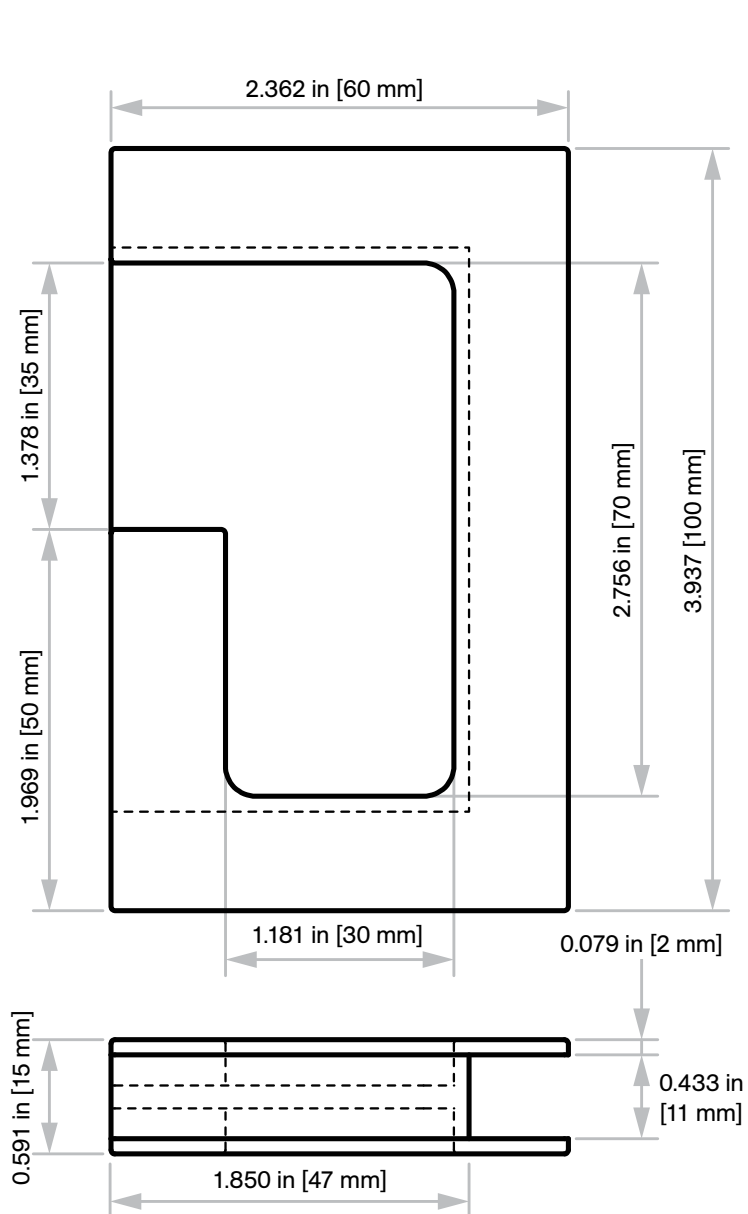
### Step #1:

Cut glass as per the glass prep on next page.

### Step #2:

Fill space between cut line and cross-hatched area with clear epoxy adhesive such as WEICON Easy Mix N-5000 and let dry and harden properly before use.

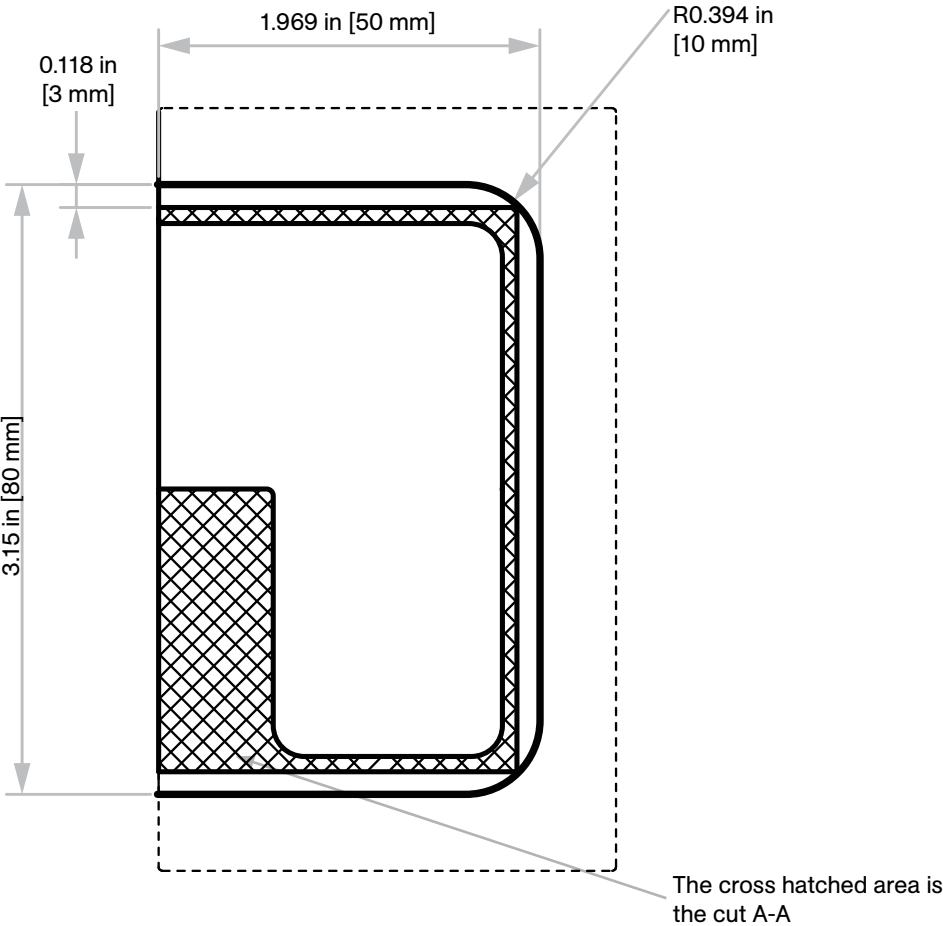
Not to scale



# Glass Prep

Not to scale

With 0.394 in [10 mm] radius cut  
3.15 in [80 mm] x 1.969 in [50 mm]



With 0.787 in [20 mm] radius cut  
3.386 in [86 mm] x 2.087 in [53 mm]

