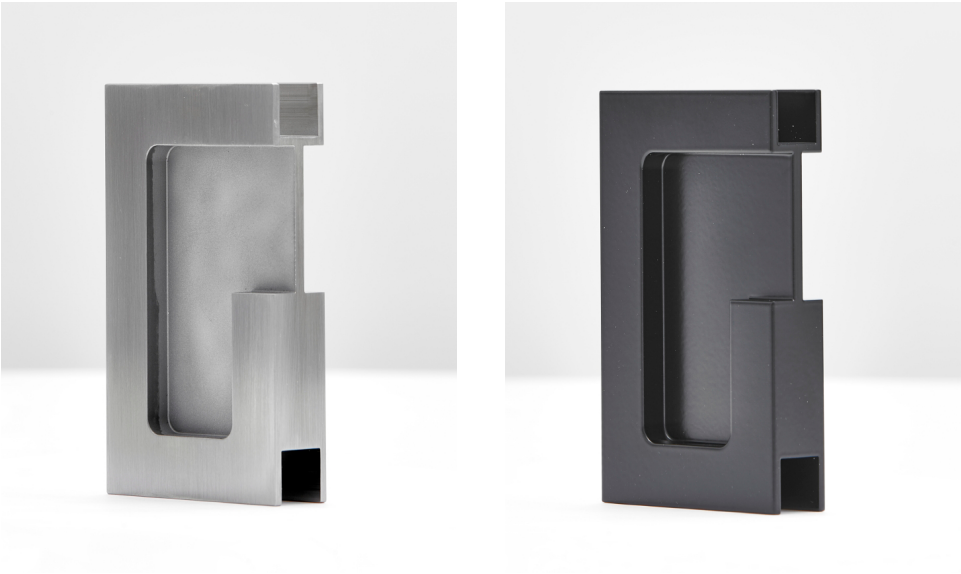


CGP-038 Glass Door Pull



FEATURES

Pulls: 2 23/64 in [60 mm] x 3 15/16 in [100 mm]

Door Thickness: 3/8 in [10 mm] only

INCLUDED COMPONENTS



1 - CGP-038 Glass Door Pull

FINISHES



622 Flat Black



630 Satin Stainless Steel

Custom Finish _____

Customer Name

Job No./Name

Date

Provided By

Notes

Installation Instructions

