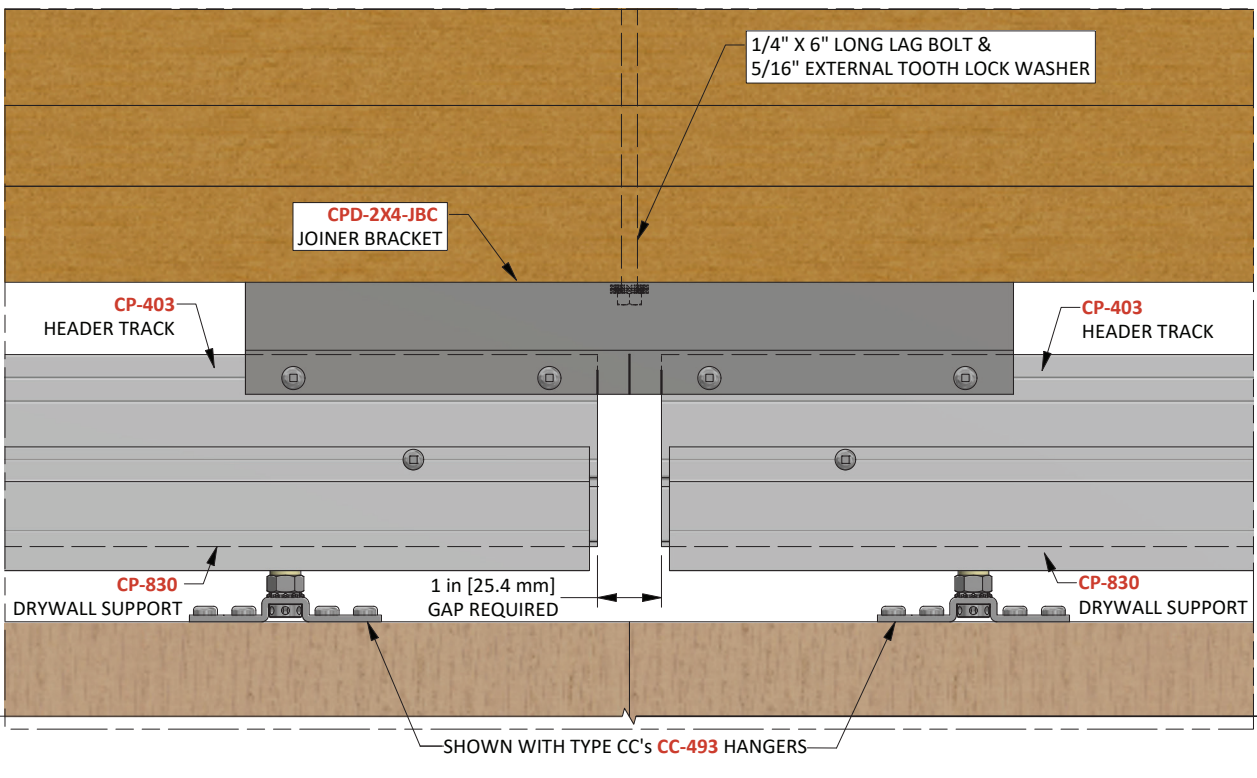
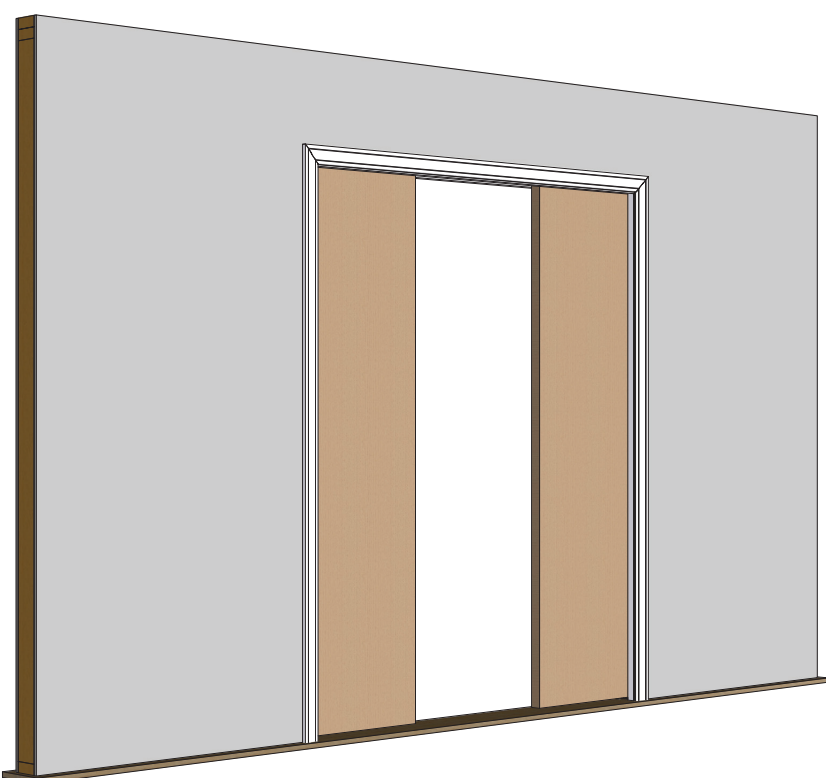


(COMPLETE 2X TYPE CC-W WITH
CPD-2X4-JOINER KIT ILLUSTRATED.
FRAMING BY OTHERS.)



DOUBLE/BI-PARTING DOOR OPENINGS WITH CPD-2X4-JOINER KIT

ROUGH OPENING HEIGHT (ROH) FROM FINISHED FLOOR:
AT LEAST 92 1/2 in [2350 mm] HIGH FOR DOORS UP TO 84 in (7'-0") OR [2150 mm]
AT LEAST 104 1/2 in [2654 mm] HIGH FOR DOORS UP TO 96 in (8'-0") OR [2455 mm] (-EXH8 KITS)

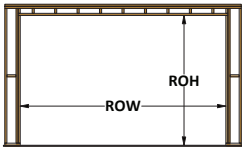


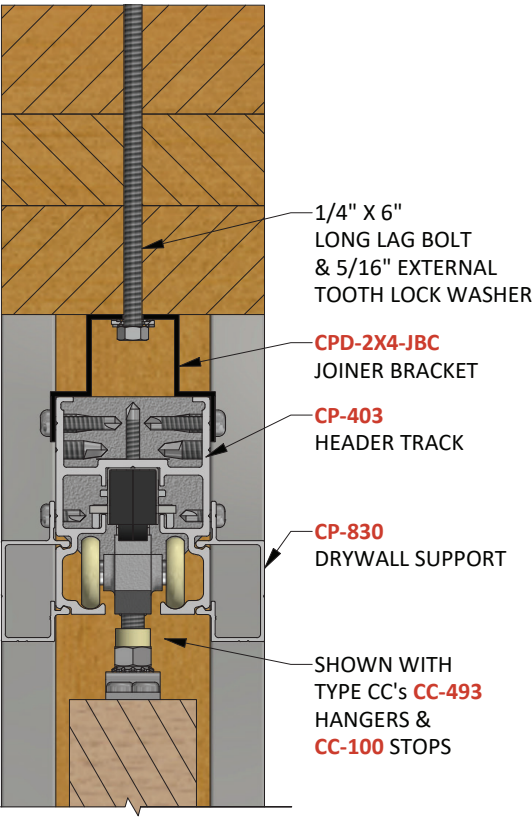
CHART CPD-2X4-A: ROUGH OPENING SIZE & TRACK LENGTH

QTY 2 X DOOR WIDTH:	ROUGH OPENING WIDTH (ROW):	QTY 2 X CP-403 TRACK LENGTH REQUIRED:
18 in (1'-6") [457 mm]	74 1/2 in [1892 mm]	36 5/8 in [930 mm]
20 in (1'-8") [508 mm]	82 1/2 in [2096 mm]	40 5/8 in [1032 mm]
22 in (1'-10") [559 mm]	90 1/2 in [2299 mm]	44 5/8 in [1134 mm]
24 in (2'-0") [610 mm]	98 1/2 in [2502 mm]	48 5/8 in [1235 mm]
26 in (2'-2") [660 mm]	106 1/2 in [2705 mm]	52 5/8 in [1337 mm]
28 in (2'-4") [711 mm]	114 1/2 in [2908 mm]	56 5/8 in [1438 mm]
30 in (2'-6") [762 mm]	122 1/2 in [3112 mm]	60 5/8 in [1540 mm]
32 in (2'-8") [813 mm]	130 1/2 in [3315 mm]	64 5/8 in [1642 mm]
34 in (2'-10") [864 mm]	138 1/2 in [3518 mm]	68 5/8 in [1743 mm]
36 in (3'-0") [914 mm]	146 1/2 in [3721 mm]	72 5/8 in [1845 mm]
38 in (3'-2") [965 mm]	154 1/2 in [3924 mm]	76 5/8 in [1946 mm]
40 in (3'-4") [1016 mm]	162 1/2 in [4128 mm]	80 5/8 in [2048 mm]
42 in (3'-6") [1067 mm]	170 1/2 in [4331 mm]	84 5/8 in [2150 mm]
44 in (3'-8") [1118 mm]	178 1/2 in [4534 mm]	88 5/8 in [2251 mm]
46 in (3'-10") [1168 mm]	186 1/2 in [4737 mm]	92 5/8 in [2353 mm]
48 in (4'-0") [1219 mm]	194 1/2 in [4940 mm]	96 5/8 in [2454 mm]

TRACK LENGTH
EQUAL TO:

2X DOOR
WIDTH
+
5/8 in
[15.9 mm]

NOTE: READ CAREFULLY - CONTAINS INFORMATION WHICH IF NOT FOLLOWED MAY VOID WARRANTY OR CAUSE INJURY TO USERS

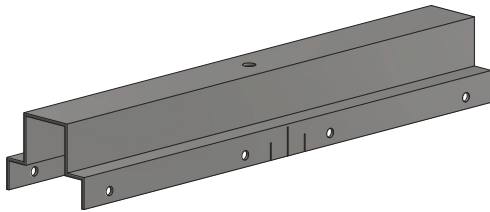


ALL TESTING ON THIS PRODUCT HAS BEEN COMPLETED WITH 2X4 LUMBER FRAMING STUDS FOR ROUGH OPENING TO PROVIDE SUFFICIENT STRUCTURAL SUPPORT FOR CROWDERFRAME POCKET DOOR KITS. (FRAMING DETAILS MAY DIFFER BASED ON REGION. REFER TO YOUR REGION'S BUILDING CODES FOR FRAMING DETAILS). IF ANY MATERIALS OR SUPPORT OTHER THAN 2X4 LUMBER FRAMING (SUCH AS METAL STUD FRAMING) IS TO BE USED FOR STRUCTURAL SUPPORT, VERIFICATION BY A CERTIFIED STRUCTURAL ENGINEER IS REQUIRED.

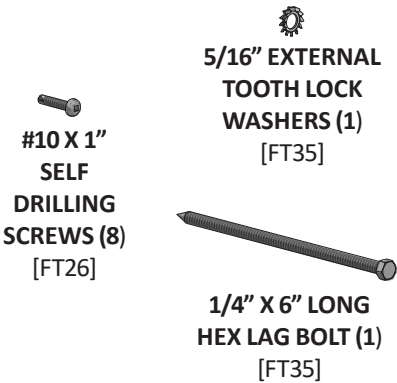
K.N. CROWDER IS NOT RESPONSIBLE FOR FRAMING DETAILS. K.N. CROWDER'S WARRANTY WILL NOT COVER ANY ISSUES THAT RESULT FROM INCORRECT STRUCTURAL SUPPORT/FRAMING DETAILS.

PARTS LIST:

TWO 2X4 CROWDERFRAME POCKET SINGLE DOOR KITS.
EXAMPLE: TYPE CC-W (PURCHASED SEPARATELY)



CPD-2X4-JBC JOINER
BRACKET (1)



STEP #CPD-1:
REFER TO **CHART CPD-2X4-A** FOR ROUGH OPENING SIZE. FOLLOW **STEPS #1 - #2** ON TYPE CC INSTRUCTION SHEET PAGE 6.

STEP #CPD-2:
CUT TWO (2) CP-403 ALUMINUM HEADER TRACKS PER TRACK NOTES SHOWN BELOW:
NOTE: FOR NARROW KITS, TRACK NOTES DO NOT APPLY, PROCEED TO CUT TRACK PER "CP-403 TRACK LENGTH REQUIRED COLUMN IN **CHART CPD-2X6-A.**

!!!IMPORTANT!!!

TRACK NOTES:

THE SUPPLIED CP-403 TRACKS FEATURES A CATCH'N'CLOSE SLOT ALONG WITH STICKERS STRAGETICALLY PLACED AS SHOWN BELOW. THIS CATCH'N'CLOSE SLOT IS REQUIRED TO INSTALL AND REMOVE CATCH'N'CLOSE CLOSING DEVICES WITHOUT REMOVING DOOR, TRIM OR OPENING WALL. TO CUT CORRECTLY, FOLLOW NOTES AND DETAILS BELOW:

FOR DOUBLE/BI-PARTING DOOR KITS:
BEFORE CUTTING TRACKS TO FINAL SIZE, 1 in [25.4 mm] MUST BE CUT OFF "OPENING/STRIKE END" OF BOTH TRACKS (INDICATED BY THE LIGHT GREY NOTE ON TRACK STICKERS). THIS IS ONLY FOR BI-PARTING OPENINGS WITH CPD-JOINER KITS. ONCE 1 in [25.4 mm] IS CUT OFF FROM "OPENING/STRIKE END" OF TRACKS, CUT BOTH TRACKS TO FINAL SIZE BY CUTTING "POCKET END" OF TRACKS AS SHOWN ABOVE PER COLUMN "CP-403 TRACK LENGTH REQUIRED" IN **CHART CPD-2X6-A**.

STEP #CPD-3:
PLACE BOTH CP-403 HEADER TRACKS END TO END WITH SMALLER GAP FACING DOWNWARDS ON A LEVEL SURFACE WITH 1 in [25.4 mm] GAP BETWEEN. SLIDE CPD-2X4-JBC JOINER BRACKET ON TOP OF CP-403 TRACKS AS SHOWN TO RIGHT. CPD-2X4-JBC JOINER BRACKET HAS 3 GROOVE LINES FOR REFERENCE. SEE **DETAIL "A"** AS SHOWN BELOW AND RIGHT TO ENSURE PROPER GAP IS ACHIEVED. SECURE CPD-2X4-JBC JOINER BRACKET TO CP-403 TRACKS USING (8) #10 X 1" SELF-DRILLING SCREWS [FT26] AS SHOWN TO RIGHT:

DETAIL "A"

STEP #CPD-4:
FOLLOW **STEPS #4 - #7** ON TYPE CC INSTRUCTION SHEET PAGE 8.

STEP #CPD-5:
IT IS REQUIRED TO FILL SPACE BETWEEN THE CPD-2X4-JBC JOINER BRACKET AND FRAMING ABOVE. MEASURE GAP AND FILL WITH BLOCKING AS SHOWN BELOW.
NOTE: DO NOT OVER OR UNDER FILL GAP WHICH COULD CAUSE TRACK TO BECOME UNLEVELED OR OUT OF PLUMB.

STEP #CPD-6:
SECURE CPD-2X4-JBC JOINER BRACKET TO FRAMING HEADER ABOVE USING (1) 1/4" X 6" LONG LAG SCREW AND 5/16" EXTERNAL TOOTH LOCK WASHER [FT35] AS SHOWN RIGHT.
NOTE: THIS IS MANDATORY IN ORDER TO SUPPORT MIDDLE SECTION OF TRACK FOR DOUBLE DOOR KITS. IF NOT SECURED TO FRAMING ABOVE, MIDDLE SECTION OF DOUBLE POCKET DOOR KIT MAY SAG AND RENDER DOORWAY INOPERABLE.

STEP #CPD-7:
USE A CHALK LINE AGAINST BOTTOM STUDS OF WALL TO MARK LINES OF OPENING ON BOTH SIDES. LOCATE AND SECURE CP-2X4 FOOT BRACKETS (2) OR (3) FOR EXTRA WIDTH KITS WITH (2 PER BRACKET) #8 X 3/4" PAN HEAD SCREWS [FT2] AS PER FOOT BRACKET LOCATION **CHART C** ON TYPE CC INSTRUCTION SHEET PAGE 9.
NOTE: FRONT EDGE OF FOOT BRACKET SHOULD FACE OPENING AS SHOWN TO RIGHT. FOOT BRACKETS ARE TO BE MOUNTED ON FINISHED FLOOR. IF FINISHED FLOOR IS NOT INSTALLED, SHIM FOOT BRACKETS TO THICKNESS OF FINISHED FLOOR.

STEP #CPD-8:
FOLLOW **STEP #10** TO END ON TYPE CC INSTRUCTION SHEET PAGES 9-14.

