

CPD-6MS-Joiner Kit

Installation Instructions for Bi-Parting Pocket Doors

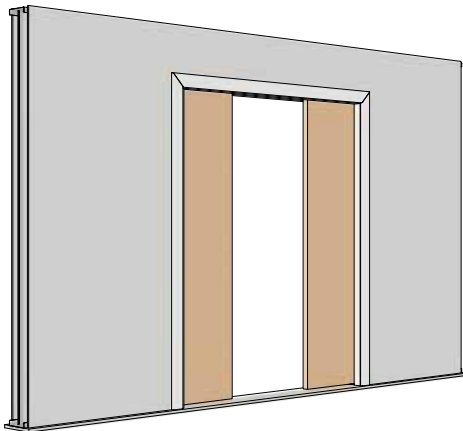


Table of Contents

Introduction

- 1 Parts' List
- 2 Rough Opening Details

Instructions

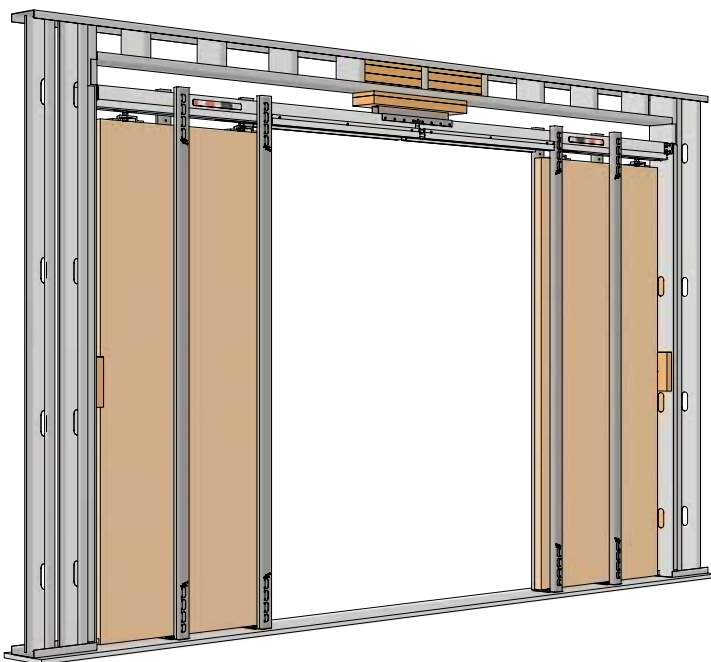
- 3 Type CC-HD-6MS
- 5 Type CC-6MS
- 7 Type C-6MS

Note: Read carefully - contains information which if not followed may void warranty or cause injury to users

All testing on this product has been completed with 6 in [152.4 mm] metal stud framing with integrated lumber framing for rough opening to provide sufficient structural support for Crowder Frame pocket door kits. (Framing details may differ based on region. Refer to your region's building codes for framing details). To ensure proper support is provided when using metal studs, verification by a certified structural engineer is required.

For 2X6 (5 1/2 in [139.7 mm]) lumber framing, please refer to KN Crowder's 2X6 Crowder Frame pocket door kits for details.

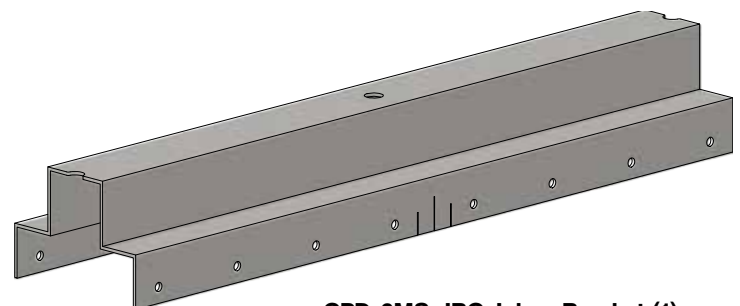
KN Crowder is not responsible for framing details. KN Crowder's warranty will not cover any issues that result from incorrect structural support/framing details.



Complete 2x Type CC-6MS with CPD-6MS-Joiner Kit illustrated.
Framing by others.

Parts' List

Two 6MS Crowder Frame pocket single door kits.
Example: Type CC-6MS (purchased separately)



CPD-6MS-JBC Joiner Bracket (1)



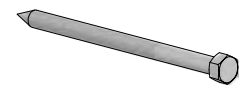
3/8"
Flat Washer (1)
[FT53]



3/8" External Tooth
Lock Washers (1)
[FT53]

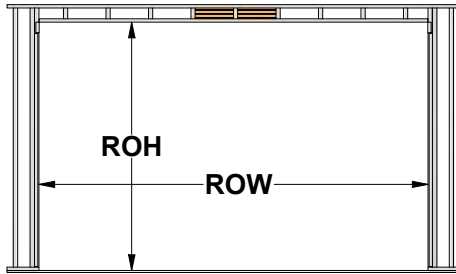


#10 x 1" Self-Drilling Screws (16)
[FT26]



3/8" x 6" Long Hex Lag Bolt (1)
[FT53]

Chart CPD-6MS-A & Rough Opening Size Details



Double/bi-parting door openings

Rough opening height (ROH) from finished floor:

At least 94 in [2350 mm] high for doors up to 84 in (7'-0") or [2150 mm]

At least 106 in [2654 mm] high for doors up to 96 in (8'-0") or [2455 mm] (-EXH8 kits)

At least 130 in [3302 mm] high for doors up to 120 in (10'-0") or [3064 mm] (-EXH10 kits)

Chart CPD-6MS-A: Rough opening size & track length

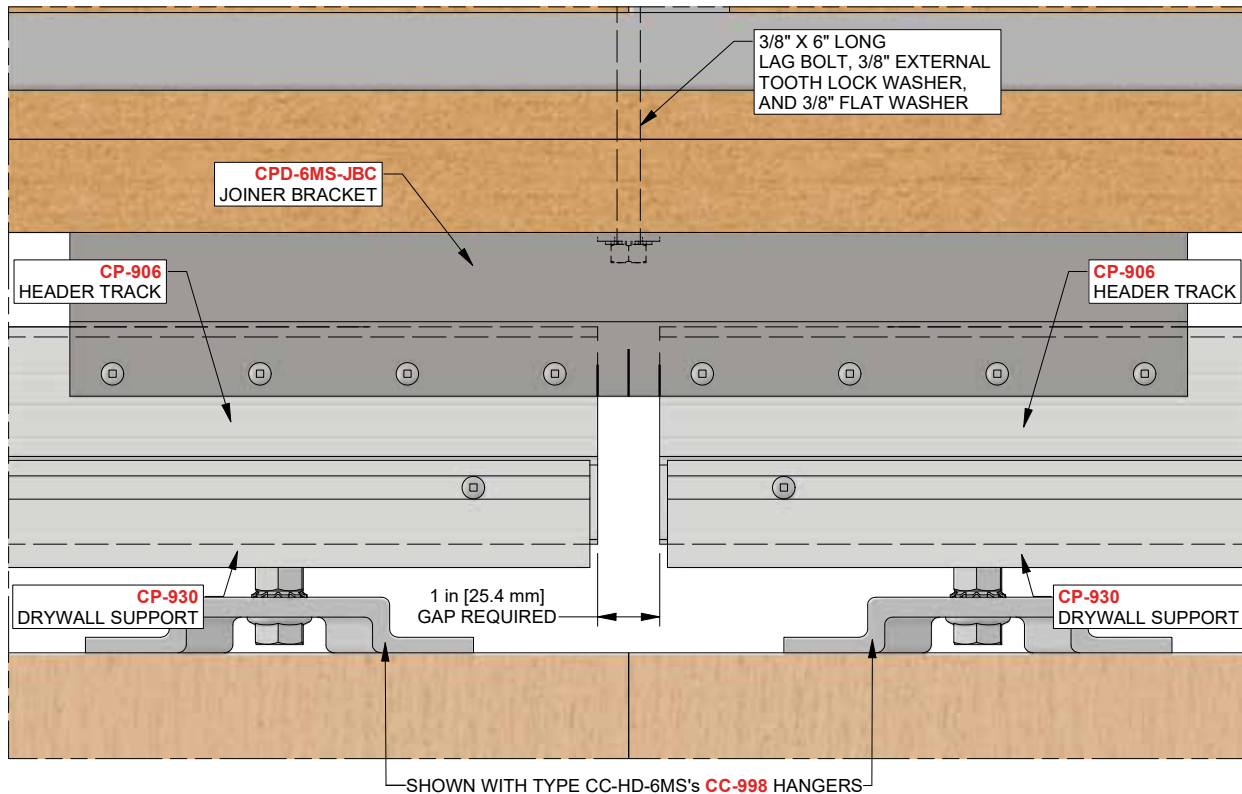
Qty 2 x door width:			Rough opening width (ROW):		Qty 2 x CP-[] track length required:	
18 in	(1'-6")	[457 mm]	74 1/2 in	[1892 mm]	36 5/8 in	[930 mm]
20 in	(1'-8")	[508 mm]	82 1/2 in	[2096 mm]	40 5/8 in	[1032 mm]
22 in	(1'-10")	[559 mm]	90 1/2 in	[2299 mm]	44 5/8 in	[1134 mm]
24 in	(2'-0")	[610 mm]	98 1/2 in	[2502 mm]	48 5/8 in	[1235 mm]
26 in	(2'-2")	[661 mm]	106 1/2 in	[2705 mm]	52 5/8 in	[1337 mm]
28 in	(2'-4")	[711 mm]	114 1/2 in	[2908 mm]	56 5/8 in	[1438 mm]
30 in	(2'-6")	[762 mm]	122 1/2 in	[3112 mm]	60 5/8 in	[1540 mm]
32 in	(2'-8")	[813 mm]	130 1/2 in	[3315 mm]	64 5/8 in	[1642 mm]
34 in	(2'-10")	[864 mm]	138 1/2 in	[3518 mm]	68 5/8 in	[1743 mm]
36 in	(3'-0")	[914 mm]	146 1/2 in	[3721 mm]	72 5/8 in	[1845 mm]
38 in	(3'-2")	[965 mm]	158 1/2 in	[4026 mm]	78 5/8 in	[1997 mm]
40 in	(3'-4")	[1016 mm]	166 1/2 in	[4229 mm]	82 5/8 in	[2099 mm]
42 in	(3'-6")	[1067 mm]	174 1/2 in	[4432 mm]	86 5/8 in	[2200 mm]
44 in	(3'-8")	[1118 mm]	182 1/2 in	[4636 mm]	90 5/8 in	[2302 mm]
46 in	(3'-10")	[1168 mm]	190 1/2 in	[4839 mm]	94 5/8 in	[2404 mm]
48 in	(4'-0")	[1219 mm]	198 1/2 in	[5042 mm]	98 5/8 in	[2505 mm]
50 in	(4'-2")	[1270 mm]	206 1/2 in	[5245 mm]	102 5/8 in	[2607 mm]
52 in	(4'-4")	[1321 mm]	214 1/2 in	[5448 mm]	106 5/8 in	[2708 mm]
54 in	(4'-6")	[1372 mm]	222 1/2 in	[5652 mm]	110 5/8 in	[2810 mm]
56 in	(4'-8")	[1422 mm]	230 1/2 in	[5855 mm]	114 5/8 in	[2912 mm]
58 in	(4'-10")	[1473 mm]	238 1/2 in	[6058 mm]	118 5/8 in	[3013 mm]
60 in	(5'-0")	[1524 mm]	246 1/2 in	[6261 mm]	122 5/8 in	[3115 mm]
62 in	(5'-2")	[1575 mm]	254 1/2 in	[6464 mm]	126 5/8 in	[3216 mm]
64 in	(5'-4")	[1626 mm]	262 1/2 in	[6668 mm]	130 5/8 in	[3318 mm]
66 in	(5'-6")	[1676 mm]	270 1/2 in	[6871 mm]	134 5/8 in	[3420 mm]
68 in	(5'-8")	[1727 mm]	278 1/2 in	[7074 mm]	138 5/8 in	[3521 mm]
70 in	(5'-10")	[1778 mm]	286 1/2 in	[7277 mm]	142 5/8 in	[3623 mm]
72 in	(6'-0")	[1829 mm]	294 1/2 in	[7480 mm]	146 5/8 in	[3724 mm]

Track length
equal to:
2x door width
+
5/8 in
[15.9 mm]

Track length
equal to:
2x door width
+
2 5/8 in
[66.7 mm]

Installation Instructions

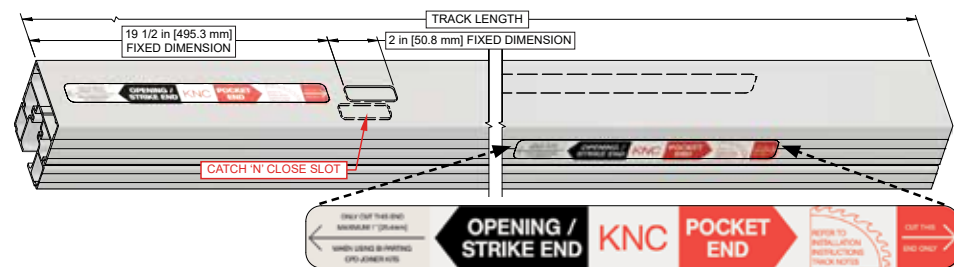
For Type CC-HD-6MS



!! Important !!

Track Notes:

The supplied CP-906 tracks features a Catch 'N' Close Slot along with stickers strategically placed as shown below. This Catch 'N' Close Slot is required to install and remove Catch 'N' Close Closing Devices without removing door, trim or opening wall. To cut correctly, follow notes and details below:



For double/bi-parting door kits:

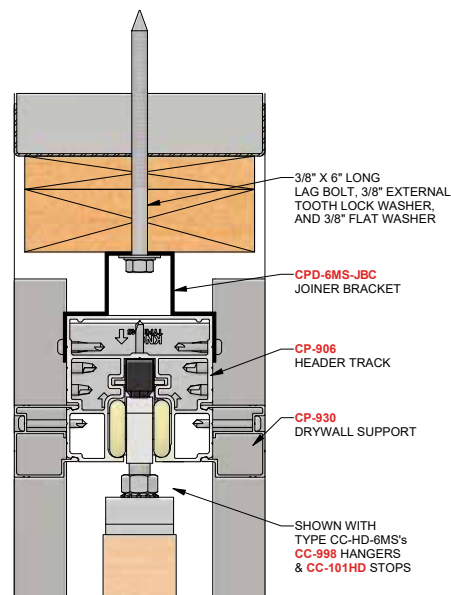
Before cutting tracks to final size, 1 in [25.4 mm] must be cut off "opening/strike end" of both tracks (indicated by the light grey note on track stickers). Once 1 in [25.4 mm] is cut off from "opening/strike end" of tracks, cut both tracks to final size by cutting "pocket end" of tracks as shown above per column "CP-906 track length required" in **Chart CPD-6MS-A**.

For two (2) doors up to 36 in [914 mm] wide:

Length is equal to 2 x door width + 5/8 in [15.9 mm]

For doors greater than 36 in [914 mm] up to 72 in [1829 mm] wide:

Length is equal to 2 x door width + 2 5/8 in [66.7 mm]



Step #CPD-1:

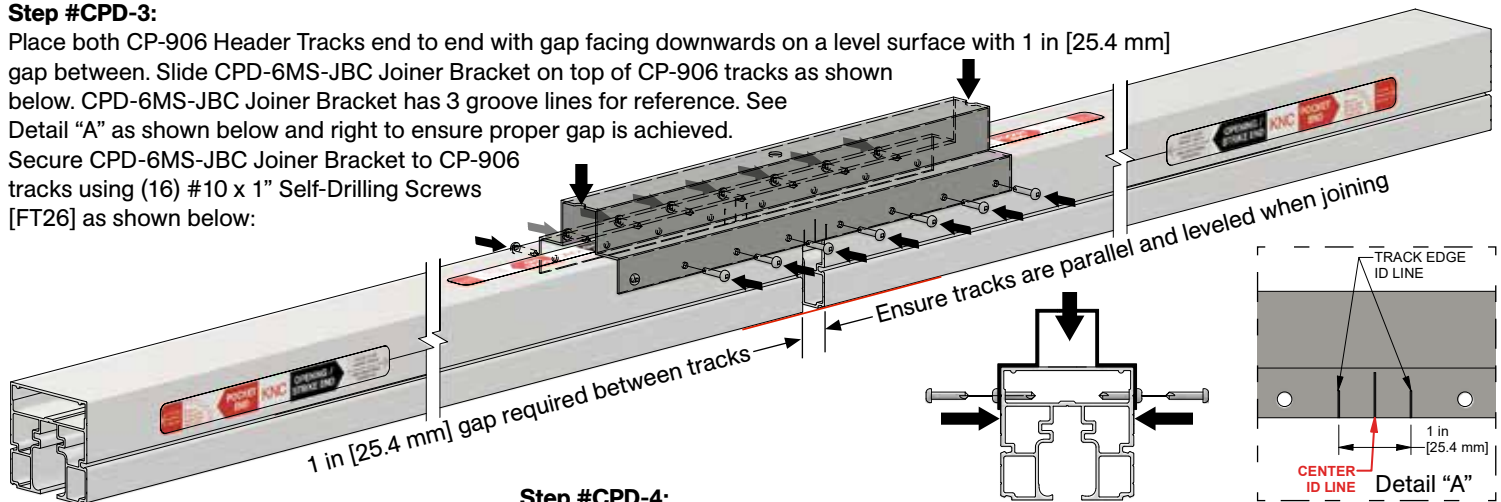
Refer to **Chart CPD-6MS-A** on page 1 for rough opening size. Follow **steps #1 - 2** on Type CC-HD-6MS Installation Instructions page 7.

Step #CPD-2:

Cut two (2) CP-906 aluminum header tracks per **Track Notes** shown above:

Step #CPD-3:

Place both CP-906 Header Tracks end to end with gap facing downwards on a level surface with 1 in [25.4 mm] gap between. Slide CPD-6MS-JBC Joiner Bracket on top of CP-906 tracks as shown below. CPD-6MS-JBC Joiner Bracket has 3 groove lines for reference. See Detail "A" as shown below and right to ensure proper gap is achieved. Secure CPD-6MS-JBC Joiner Bracket to CP-906 tracks using (16) #10 x 1" Self-Drilling Screws [FT26] as shown below:



Step #CPD-4:

Follow steps #4 - 7 on Type CC-HD-6MS Installation Instructions pages 8-9.

Step #CPD-5:

It is required to fill space between CPD-6MS-JBC Joiner Bracket and framing above. Measure gap and fill with blocking as shown left.

Note: Do not over or under fill gap. This could cause track to become unlevelled or out of plumb.

Step #CPD-6:

Secure CPD-6MS-JBC Joiner Bracket to framing header above using (1) 3/8" x 6" Long Lag Screw, (1) 3/8" External Tooth Lock Washer and (1) 3/8" Flat Washer [FT53] as shown left.

Note: This is mandatory to support middle section of track for double door kits. If not secured to framing above, middle section of double pocket door kit may sag and render doorway inoperable.

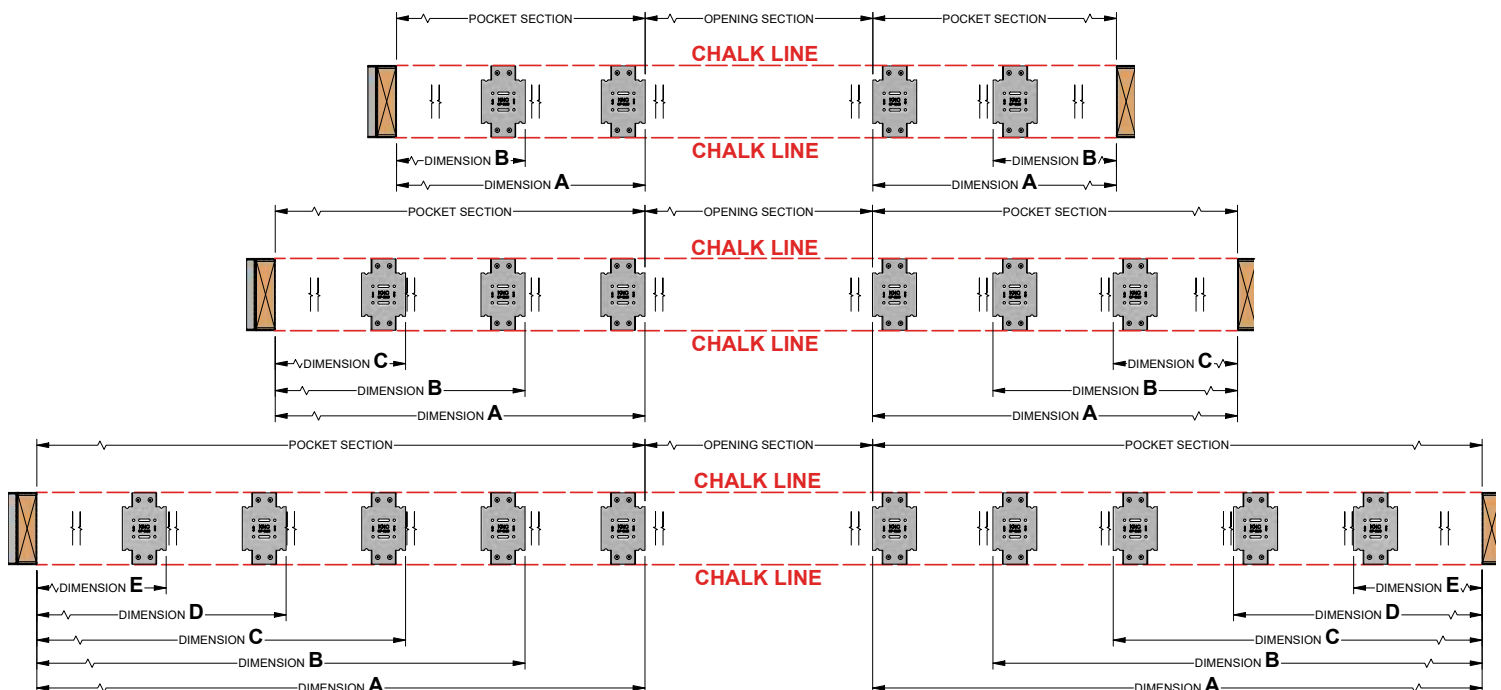
Step #CPD-7:

Use a chalk line against bottom studs of wall to mark lines of opening on both sides. Locate and secure CP-6MS Foot Brackets (2), (3) for extra width (EXW4) kits or (5) for extra width (EXW6) kits with (4 per bracket) #10 x 3/4" Pan Head Screws [FT3] as per foot bracket location Chart C or Chart C-2 on Type CC-HD-6MS Installation Instructions pages 10-11.

Note: Foot brackets are reversible. Foot brackets are to be mounted on finished floor. If finished floor is not installed, shim foot brackets to thickness of finished floor.

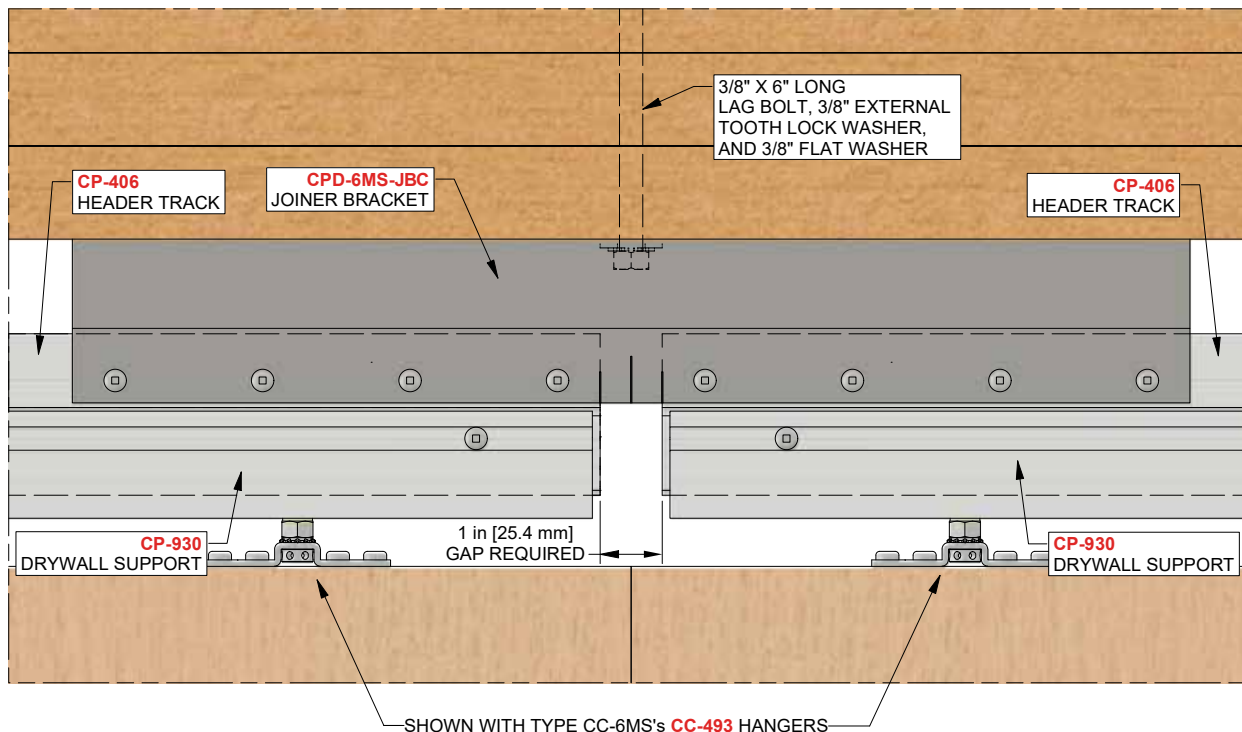
Step #CPD-8:

Follow steps #10 - 33 on Type CC-HD-6MS Installation Instructions pages 11-17.



Installation Instructions

For Type CC-6MS

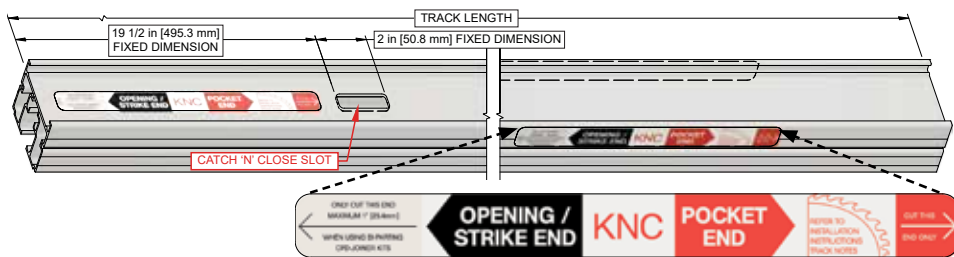


!! Important !!

**** This does not apply to narrow kits ****

Track Notes:

The supplied CP-406 Tracks features a Catch 'N' Close Slot along with stickers strategically placed as shown below. This Catch 'N' Close Slot is required to install and remove Catch 'N' Close Closing Devices without removing door, trim or opening wall. To cut correctly, follow notes and details below:



For double/bi-parting door kits:

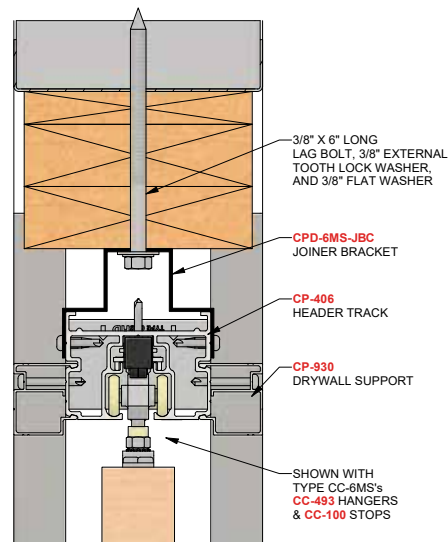
Before cutting tracks to final size, 1 in [25.4 mm] must be cut off "opening/strike end" of both tracks (indicated by the light grey note on track stickers). Once 1 in [25.4 mm] is cut off from "opening/strike end" of track, cut both tracks to final size by cutting "pocket end" of tracks as shown above per column "CP-406 track length required" in **Chart CPD-6MS-A**.

For two (2) doors up to 36 in [914 mm] wide:

Length is equal to 2 x door width + 5/8 in [15.9 mm]

For doors greater than 36 in [914 mm] up to 48 in [1219 mm] wide:

Length is equal to 2 x door width + 2 5/8 in [66.7 mm]



Step #CPD-1:

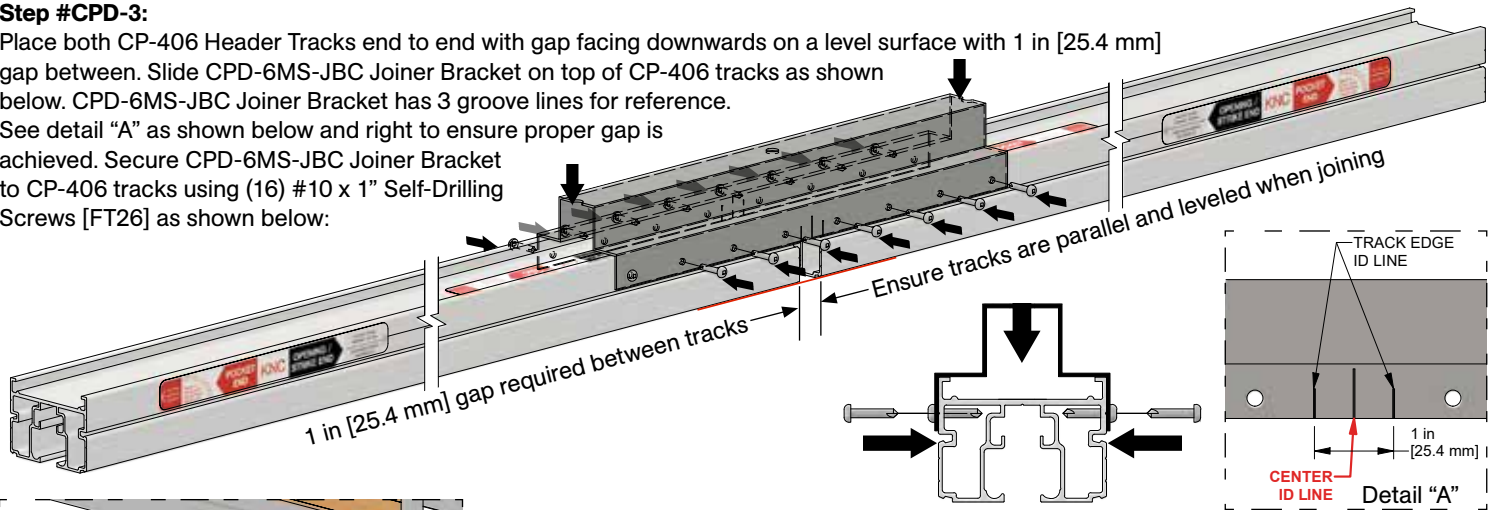
Refer to **Chart CPD-6MS-A** on page 1 for rough opening size. Follow **steps #1 - 2** on Type CC-6MS Installation Instructions page 7.

Step #CPD-2:

Cut two (2) CP-406 aluminum header tracks per **Track Notes** shown above:

Step #CPD-3:

Place both CP-406 Header Tracks end to end with gap facing downwards on a level surface with 1 in [25.4 mm] gap between. Slide CPD-6MS-JBC Joiner Bracket on top of CP-406 tracks as shown below. CPD-6MS-JBC Joiner Bracket has 3 groove lines for reference. See detail "A" as shown below and right to ensure proper gap is achieved. Secure CPD-6MS-JBC Joiner Bracket to CP-406 tracks using (16) #10 x 1" Self-Drilling Screws [FT26] as shown below:



Step #CPD-4:

Follow **steps #4 - 7** on Type CC-6MS Installation Instructions pages 8-9.

Step #CPD-5:

It is required to fill space between CPD-6MS-JBC Joiner Bracket and framing above. Measure gap and fill with blocking as shown left.

Note: Do not over or under fill gap. This could cause track to become unlevelled or out of plumb.

Step #CPD-6:

Secure CPD-6MS-JBC Joiner Bracket to framing header above using (1) 3/8" x 6" Long Lag Screw, (1) 3/8" External Tooth Lock Washer and (1) 3/8" Flat Washer [FT53] as shown left.

Note: This is mandatory in order to support middle section of track for double door kits. If not secured to framing above, middle section of double pocket door kit may sag and render doorway inoperable.

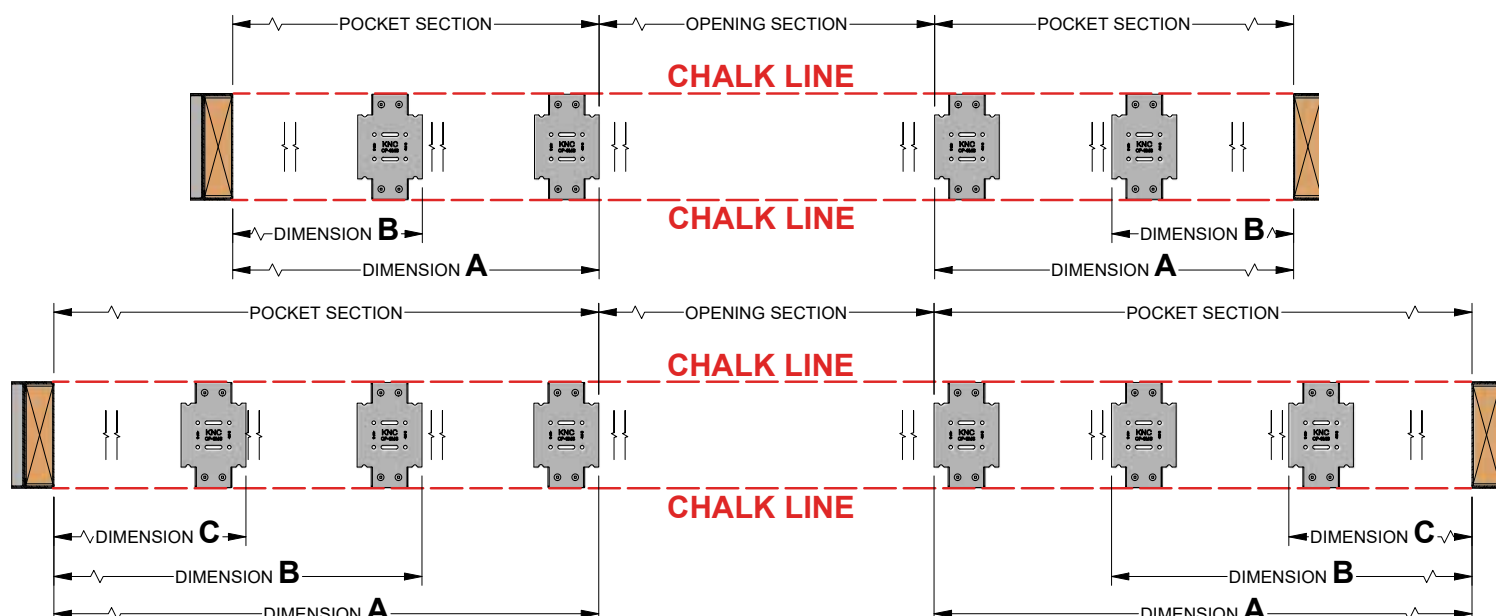
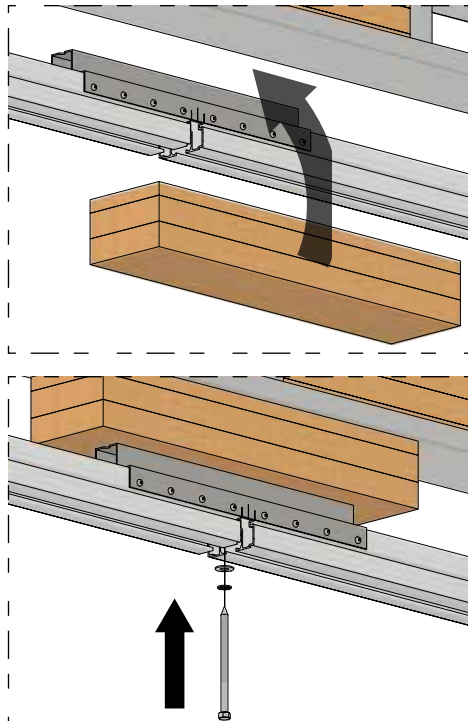
Step #CPD-7:

Use a chalk line against bottom studs of wall to mark lines of opening on both sides. Locate and secure CP-6MS Foot Brackets (2), (3) for extra width (EXW4) kits with (4 per bracket) #10 x 3/4" Pan Head Screws [FT3] as per foot bracket location **Chart C** on Type CC-6MS Installation Instructions pages 10.

Note: Foot brackets are reversible. Foot brackets are to be mounted on finished floor. If finished floor is not installed, shim foot brackets to thickness of finished floor.

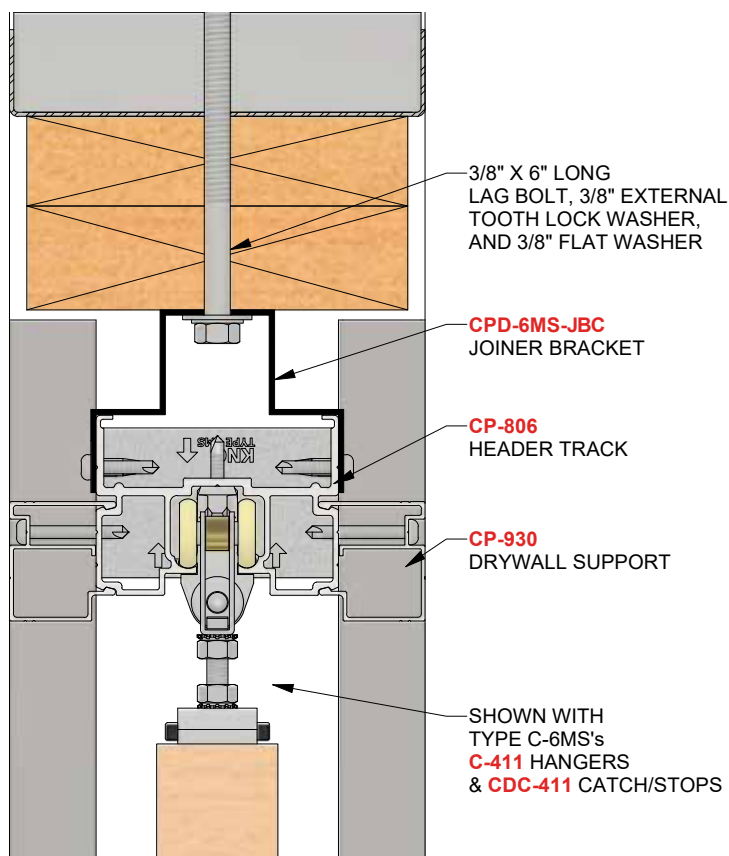
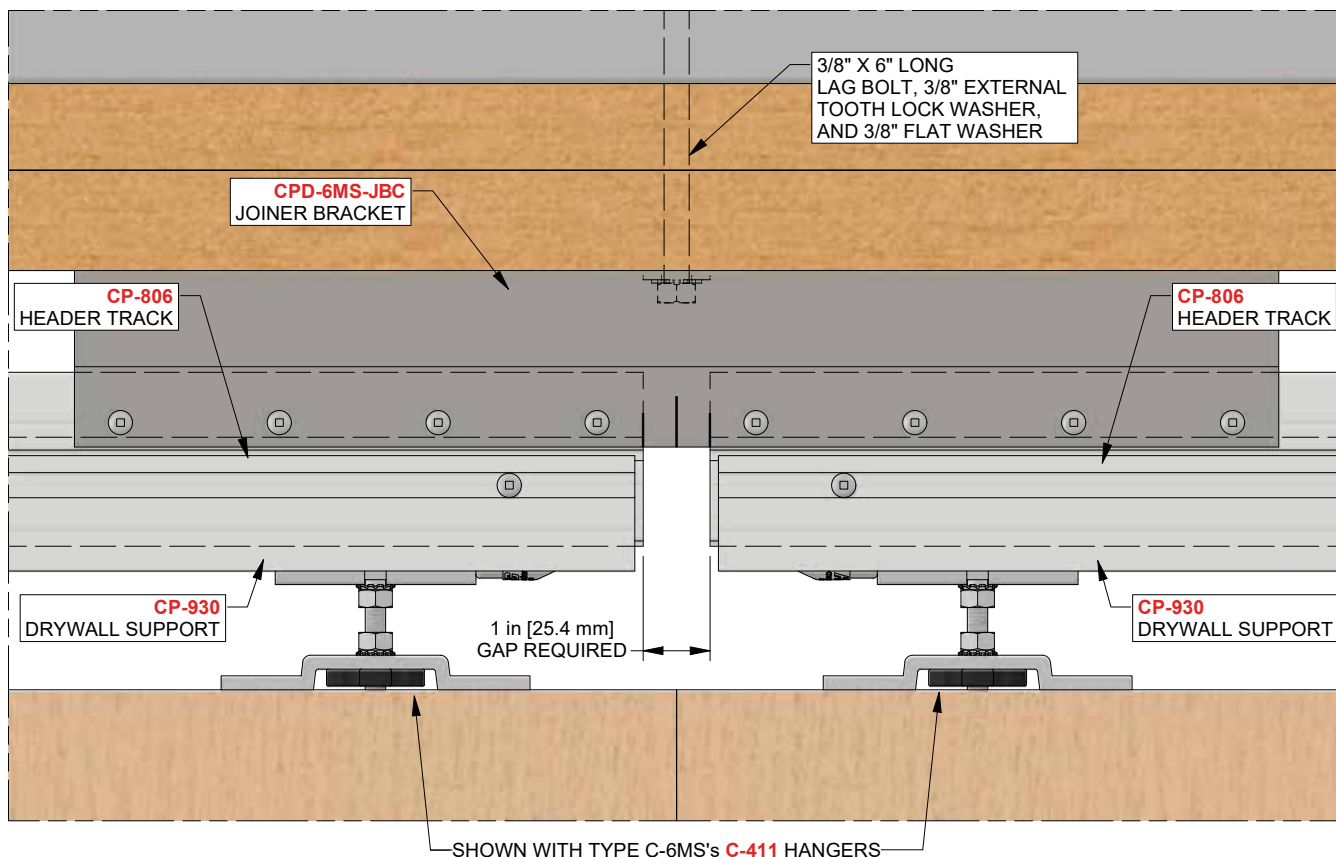
Step #CPD-8:

Follow **steps #10 - 33** on Type CC-6MS Installation Instructions pages 11-17.



Installation Instructions

For Type C-6MS



Step #CPD-1:

Refer to **Chart CPD-6MS-A** on page 1 for rough opening size. Follow **steps #1 - 2** on Type C-6MS Installation Instructions page 7.

Step #CPD-2:

Cut two (2) CP-806 aluminum header tracks to correct size if required. To calculate track length:

For doors up to 36 in [914 mm] wide:

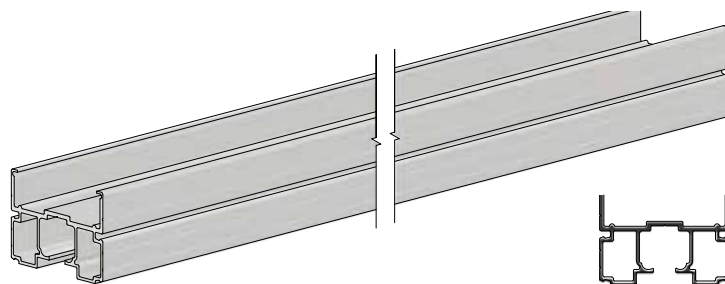
Length is equal to 2 x door width + 5/8 in [15.9 mm].

See column "CP-806 track length required" in **Chart CPD-6MS-A** for track lengths based on door widths.

For doors greater than 36 in [914 mm] up to 48 in [1219 mm] wide:

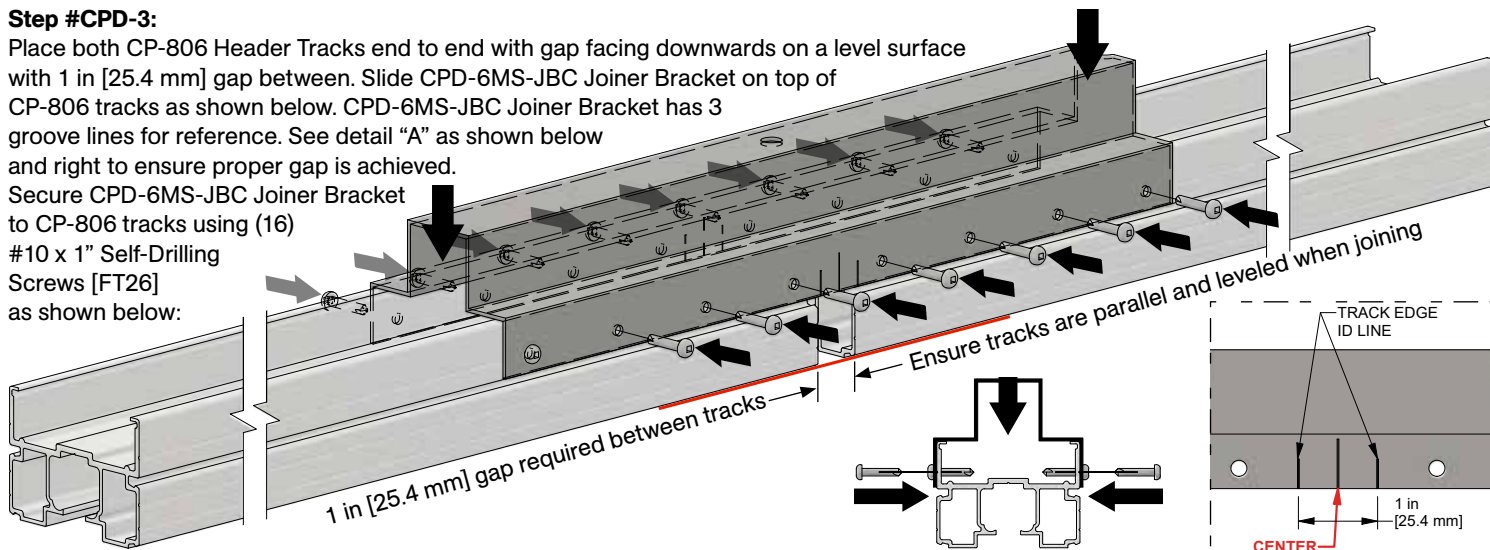
Length is equal to 2 x door width + 2 5/8 in [66.7 mm].

See column "CP-806 track length required" in **Chart CPD-6MS-A** for track lengths based on door widths.



Step #CPD-3:

Place both CP-806 Header Tracks end to end with gap facing downwards on a level surface with 1 in [25.4 mm] gap between. Slide CPD-6MS-JBC Joiner Bracket on top of CP-806 tracks as shown below. CPD-6MS-JBC Joiner Bracket has 3 groove lines for reference. See detail "A" as shown below and right to ensure proper gap is achieved. Secure CPD-6MS-JBC Joiner Bracket to CP-806 tracks using (16) #10 x 1" Self-Drilling Screws [FT26] as shown below:



Step #CPD-4:

Follow **steps #4 - 7** on Type C-6MS Installation Instructions page 8.

Step #CPD-5:

It is required to fill space between CPD-6MS-JBC Joiner Bracket and framing above. Measure gap and fill with blocking as shown left.

Note: Do not over or under fill gap. This could cause track to become unlevelled or out of plumb.

Step #CPD-6:

Secure CPD-6MS-JBC Joiner Bracket to framing header above using (1) 3/8" x 6" Long Lag Screw, (1) 3/8" External Tooth Lock Washer and (1) 3/8" Flat Washer [FT53] as shown left.

Note: This is mandatory in order to support middle section of track for double door kits. If not secured to framing above, middle section of double pocket door kit may sag and render doorway inoperable.

Step #CPD-7:

Use a chalk line against bottom studs of wall to mark lines of opening on both sides. Locate and secure CP-6MS Foot Brackets (2), (3) for extra width (EXW4) kits with (4 per bracket) #10 x 3/4" Pan Head Screws [FT3] as per foot bracket location **Chart C** on Type C-6MS Installation Instructions page 9.

Note: Foot brackets are reversible. Foot brackets are to be mounted on finished floor. If finished floor is not installed, shim foot brackets to thickness of finished floor.

Step #CPD-8:

Follow **steps #9 - 25** on Type C-6MS Installation Instructions pages 10-13.

