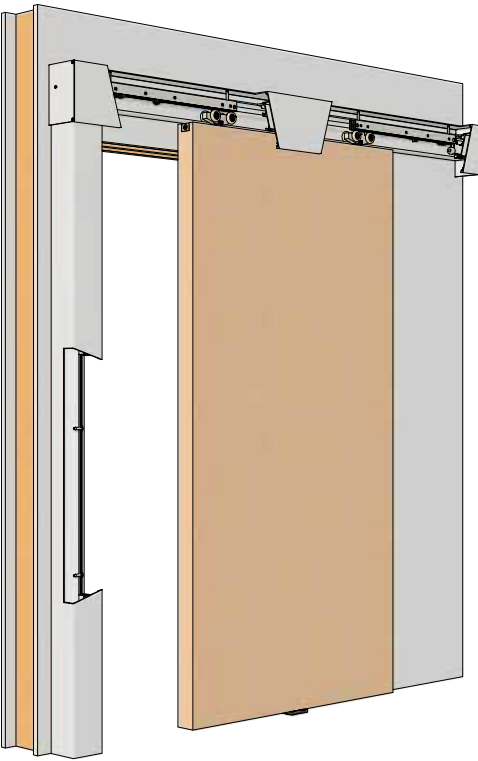


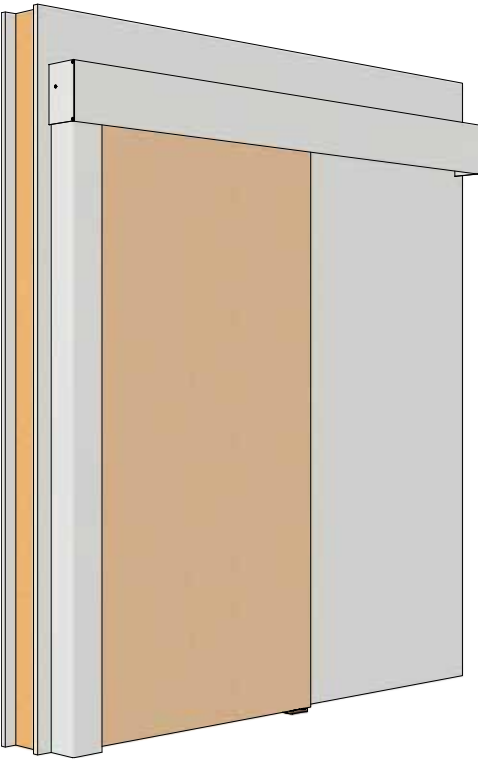
Crowder Strike

With CCSF-410 series

Installation Instructions



Complete Crowder Strike with CCSF-410 kit illustrated. Framing by others.



Note: Crowder Strike kits do not include track and hardware and must be purchased separately

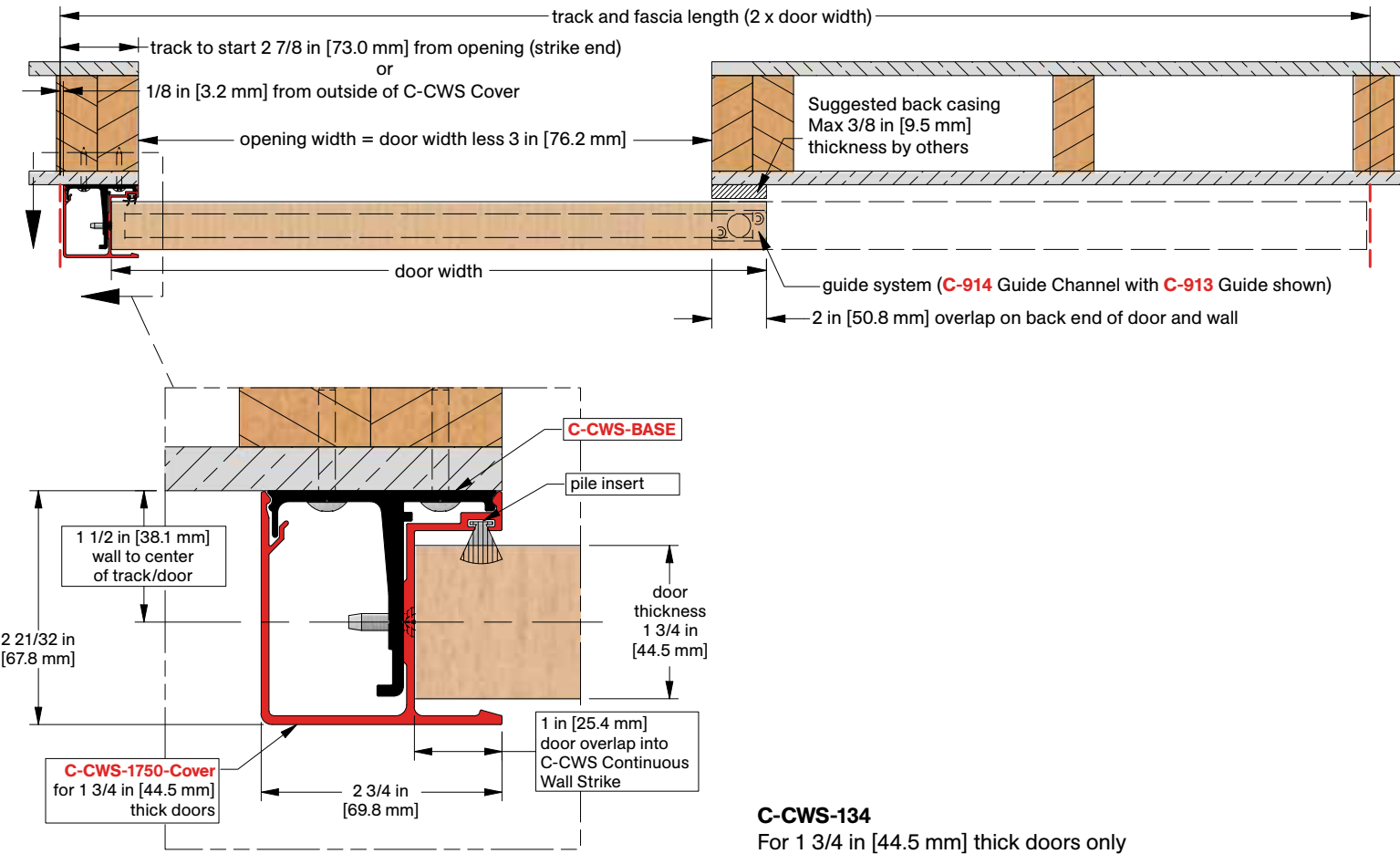
All testing on this product has been completed with 2x4 lumber framing studs or 3 5/8 in [92.1 mm] metal stud framing with integrated lumber framing for rough opening to provide sufficient structural support for Crowder Frame pocket door kits. Framing details may differ based on region. Refer to your region's building codes for framing details. To ensure proper support is provided when using lumber or metal framing studs, verification by a certified structural engineer is required. KN Crowder is not responsible for framing details. KN Crowder's warranty will not cover any issues that result from incorrect structural support/framing details

Chart A

Specify left or right-handed

Product Code	Door Thickness	Max Door Height
C-CWS-134 x 2150 mm	1 3/4 in [44.5 mm]	84 5/8 in [2150 mm]
C-CWS-134 x 96 in	1 3/4 in [44.5 mm]	96 in [2438 mm]
C-CWS-134 x 120 in	1 3/4 in [44.5 mm]	120 in [3048 mm]

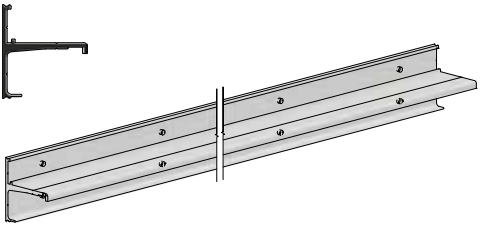
Plan View



C-CWS-134
For 1 3/4 in [44.5 mm] thick doors only

Parts List

Track and hardware system required, example: C-911-110 series, purchased separately



C-CWS-Base x
(length options listed below)

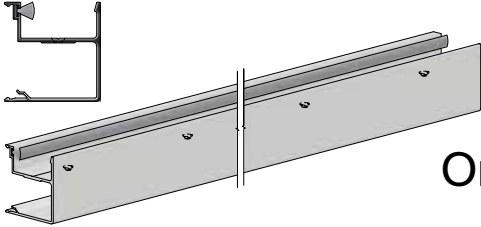
For C-CWS-[DTH] x 2150 mm:
(1) piece x 86 in [2184 mm]

For C-CWS-[DTH] x 96 in:
(1) piece x 98 in [2489 mm]

For C-CWS-[DTH] x 120 in:
(1) piece x 122 in [3099 mm]

#10 x 1-1/2" Truss Head Screws (14)
[FT54]

Details show right-hand outside door with left-handed Crowder Strike



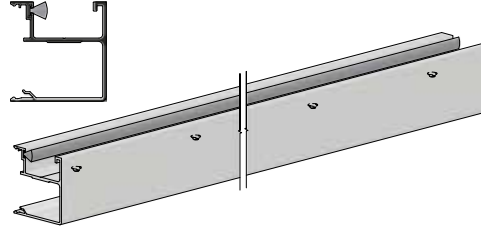
For 1 3/4 in [44.5 mm] thick doors:
C-CWS-1750 Cover x
(length options listed below)

For C-CWS-134 x 2150 mm:
(1) piece x 86 in [2184 mm]

For C-CWS-134 x 96 in:
(1) piece x 98 in [2489 mm]

For C-CWS-134 x 120 in:
(1) piece x 122 in [3099 mm]

#10 x 1" Flat Undercut Head Type F Screws (8)
[FT54]



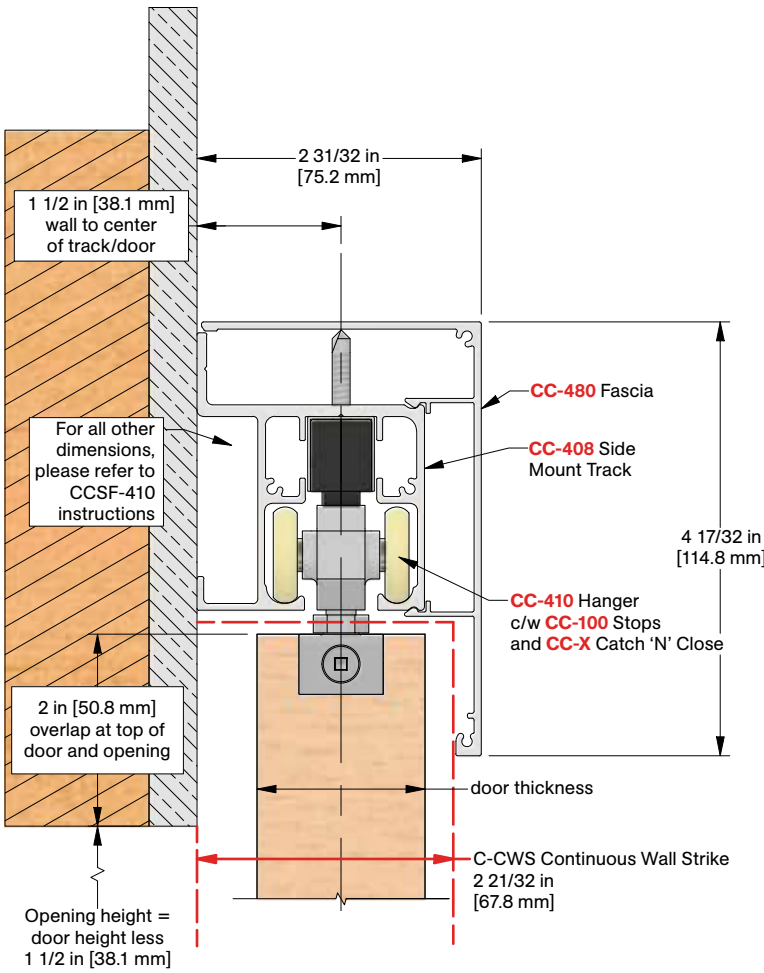
For 1 3/8 in [34.9 mm] thick doors:
C-CWS-1375 Cover x
(length options listed below)

For C-CWS-138 x 2150 mm:
(1) piece x 86 in [2184 mm]

For C-CWS-138 x 96 in:
(1) piece x 98 in [2489 mm]

For C-CWS-138 x 120 in:
(1) piece x 122 in [3099 mm]

Section View

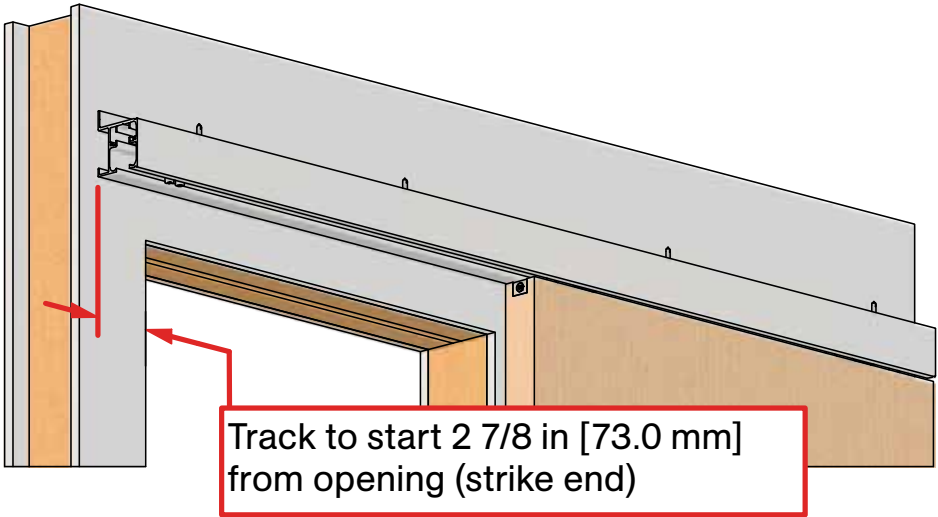


This product is handed, refer to handing chart for details.
Installation details show right-hand outside door with left-handed Crowder Strike. Contact Customer Service for optional pre-prep machining for strike plate and dust proof box.

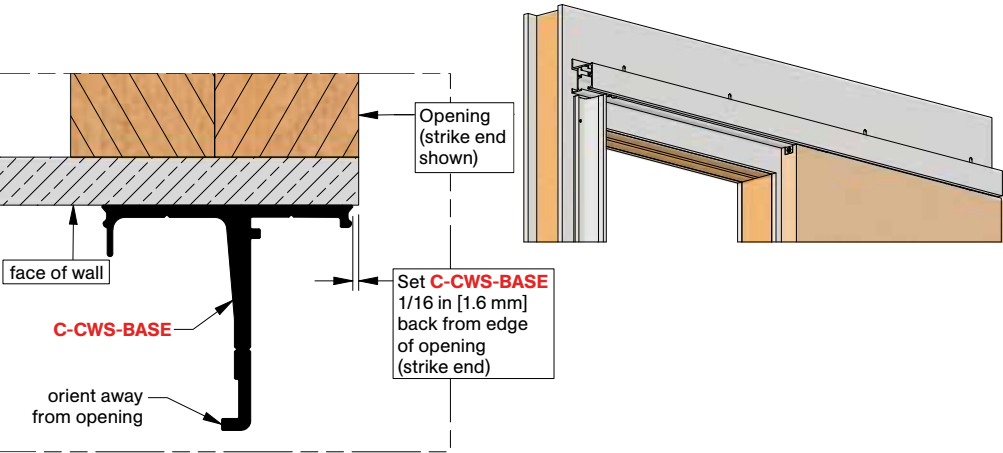
Step #1:
Determine door size, rough and finished opening size based on track and hardware used for application. Refer to CCSF-410 instructions for track and hardware details.
Note: Door should be 3 in [76.2 mm] wider and 2 in [50.8 mm] higher than finished opening for sufficient overlap of door as shown in details on page 1.

Step #2:
Refer to CCSF-410 installation instructions for typical installation of track and hardware. CC-408 Side Mount Track and CC-480 Fascia should be minimum 2x door width. When installing CC-408 Side Mount Track, strike end of track should start minimum 2 7/8 in [73.0 mm] on strike side of opening as shown below.

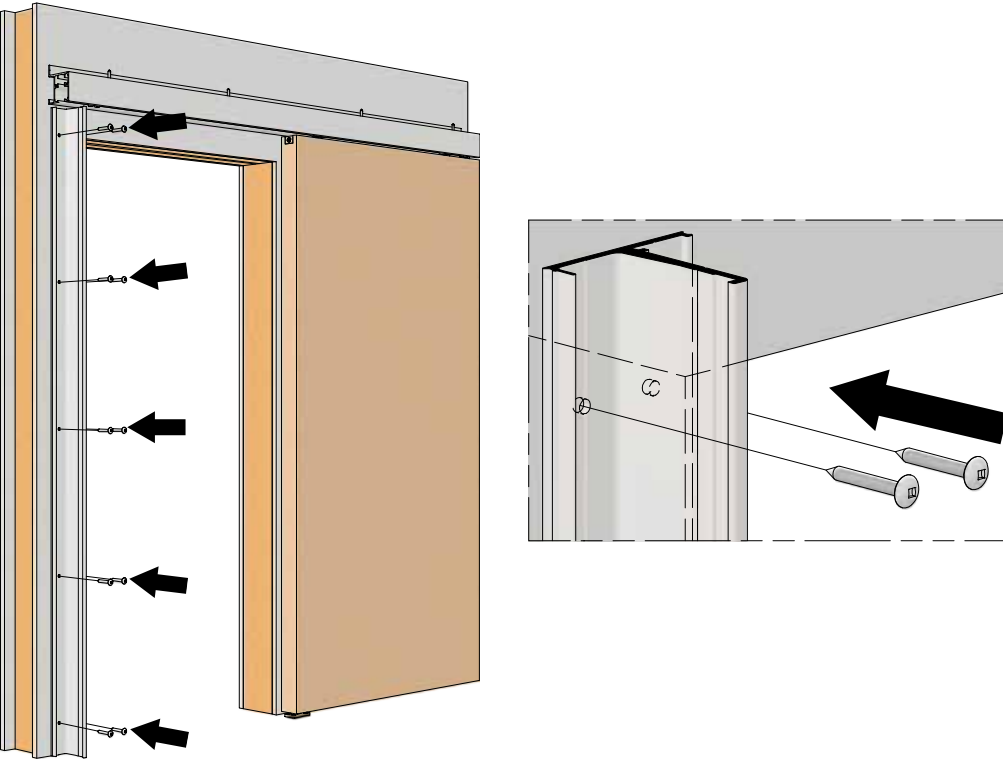
Recommendation: Do not install CC-X Catch 'N' Close Devices, CC-480 Fascia and CC-482 End Caps until step #7 of this installation instructions.



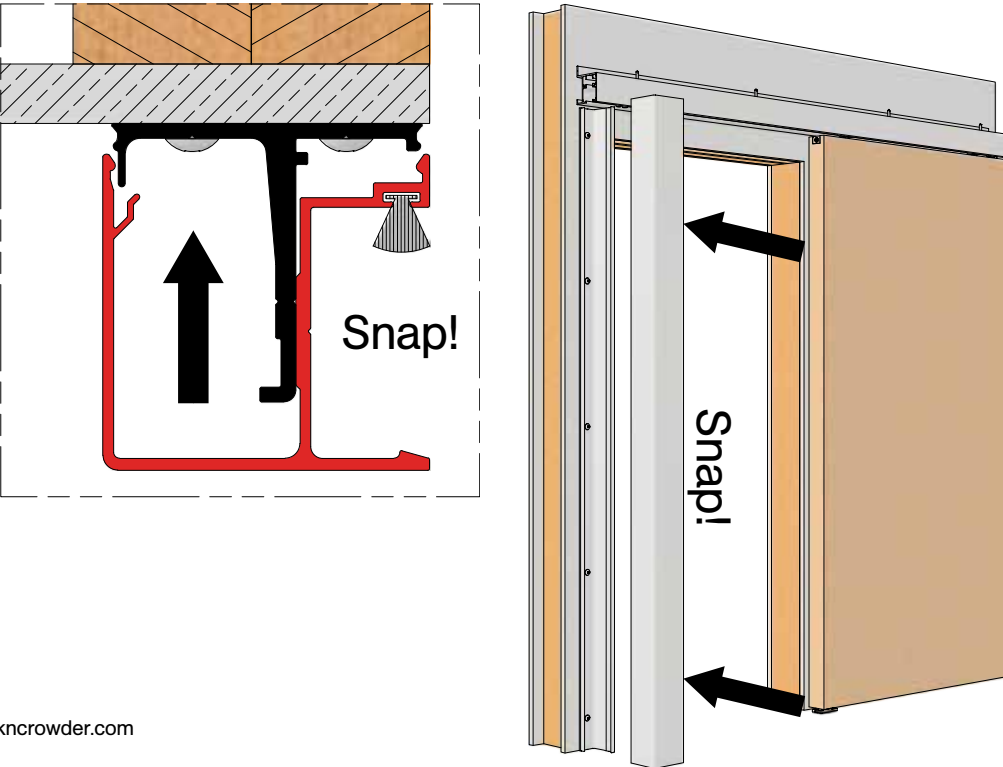
Step #3:
Once track, hardware, and door is installed and plumb, locate C-CWS-Base piece on wall as shown below. Ensure to set base back 1/16 in [1.6 mm] from finished trim or desired final location of assembled C-CWS section. C-CWS-Base should not touch underside of track previously installed, cut down if required.
Note: Cut down from top end as pre-punched holes are designed to accommodate strike plate at various heights.



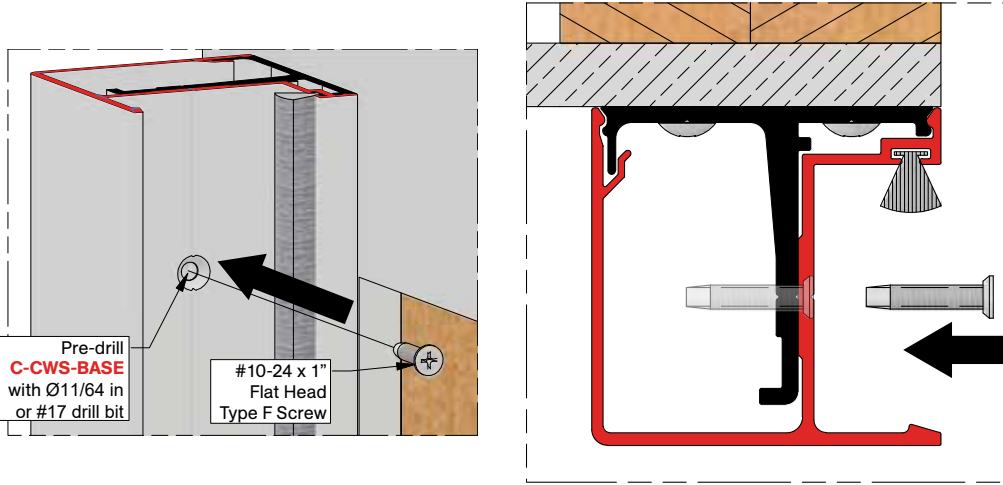
Step #4:
C-CWS-Base piece comes complete with pre-punched holes for mounting to wall. Use #10 x 1-1/2" Truss Head Screws [FT54] to secure C-CWS-Base to wall, up to 14 screws.
Note: Ensure Crowder Strike system is plumb on wall to same plumbness of door to ensure door closes correctly into strike channel of C-CWS-Cover.



Step #5:
Cut C-CWS-1750 or C-CWS-1375 Cover to same length as C-CWS-Base piece and snap to C-CWS-Base previously secured to wall.
Note: Cut down from top end as pre-punched holes are designed to accommodate strike plate at various heights. Test sliding door in the closed position to ensure proper engagement with C-CWS-Cover's Strike Channel.
Note: Snap fit is made to properly secure cover to base piece and may be difficult to remove once snapped.



Step #6:
C-CWS-Covers come with pre-punched and countersunk holes. With C-CWS-Cover snapped into final position, for each countersunk hole on C-CWS-Cover, pre-drill C-CWS-Base with Ø11/64 in or #17 drill bit. Secure C-CWS-Cover with #10-24 X 1" Flat Head Type F Screws [FT54], up to 8 screws.



Step #7:
Once opened and closed positions of door are finalized, install CC-X Catch 'N' Close Devices. Snap CC-480 Fascia onto track and over Crowder Strike system. Fascia should overlap Crowder Strike as shown in section view on page 1. Secure fascia with CC-482 End Caps and fasteners. Refer to CCSF-410 installation instructions for details.

