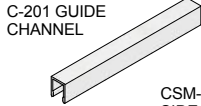


CSM-200-XXX/CSM-913-XXX/CSM-913-2HD GUIDE SYSTEM INSTRUCTION SHEET

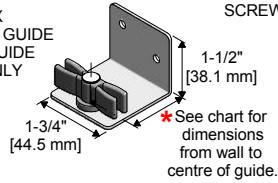
new



PARTS LIST

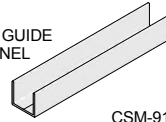


CSM-200-XXX
SIDE MOUNT GUIDE
FOR C-201 GUIDE
CHANNEL ONLY

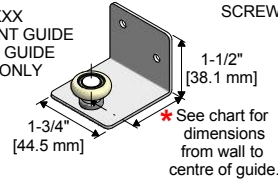


#10 X 1-1/4" PAN HEAD
SCREWS (2 PER CSM-200)

C-914 GUIDE
CHANNEL

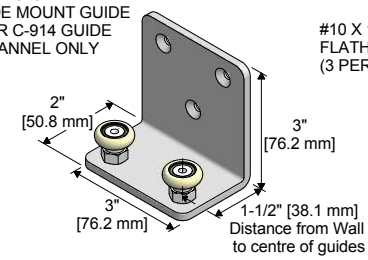


CSM-913-XXX
SIDE MOUNT GUIDE
FOR C-914 GUIDE
CHANNEL ONLY



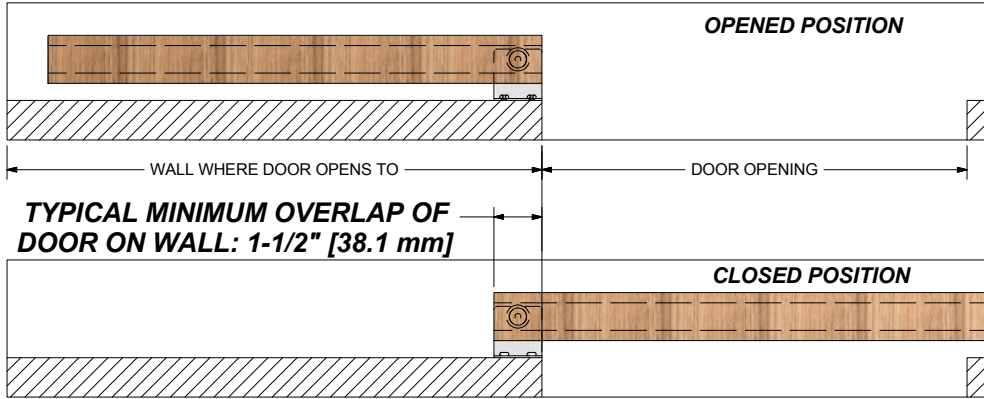
#10 X 1-1/4" PAN HEAD
SCREWS (2 PER CSM-913)

CSM-913-2HD
SIDE MOUNT GUIDE
FOR C-914 GUIDE
CHANNEL ONLY



#10 X 1-3/4" FLATHEAD SCREWS
(3 PER CSM-913-2HD)

TYPICAL INSTALLATION LOCATION FOR SIDE MOUNT GUIDES: GUIDE CHANNEL IN DOOR WITH GUIDE ON WALL FOR BARN DOOR APPLICATIONS

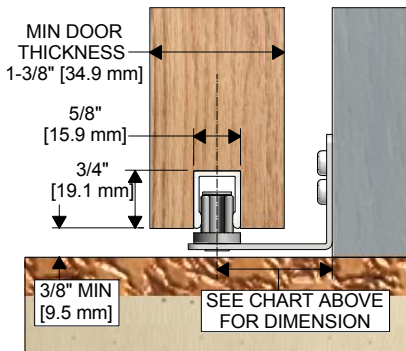


NOTE: IF USING THE CSM-913-2HD GUIDE, THE TYPICAL MINIMUM OVERLAP IS 3" [76.2 mm]

PRODUCT NAME:	*DISTANCE FROM WALL TO CENTER OF GUIDE:	COMPATIBLE TRACKS:
CSM-913-108	1-1/2" [38.1 mm]	*C-108 SIDE MOUNT TRACK *C-104 TRACK WITH C-402 SIDE MOUNT BRACKETS *C-204 TRACK WITH C-205 SIDE MOUNT BRACKETS
CSM-913-401	1-3/8" [34.9 mm]	*C-400 TRACK WITH C-401 SIDE MOUNT BRACKETS
CSM-913-412	1-7/16" [36.5 mm]	*C-412 SIDE MOUNT TRACK
CSM-913-2HD	1-1/2" [38.1 mm]	*C-108 SIDE MOUNT TRACK *C-104 TRACK WITH C-402 SIDE MOUNT BRACKETS *C-204 TRACK WITH C-205 SIDE MOUNT BRACKETS
CSM-200-108	1-1/2" [38.1 mm]	*C-108 SIDE MOUNT TRACK *C-104 TRACK WITH C-402 SIDE MOUNT BRACKETS *C-204 TRACK WITH C-205 SIDE MOUNT BRACKETS
CSM-200-401	1-3/8" [34.9 mm]	*C-400 TRACK WITH C-401 SIDE MOUNT BRACKETS
CSM-200-412	1-7/16" [36.5 mm]	*C-412 SIDE MOUNT TRACK

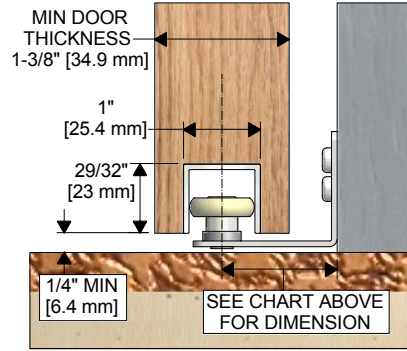
OPTION 1:

CSM-200-XXX SIDE MOUNT GUIDE WITH C-201 GUIDE CHANNEL IN DOOR



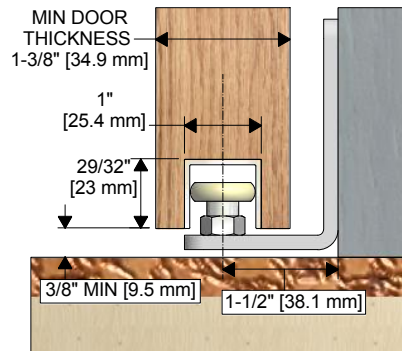
OPTION 2:

CSM-913-XXX SIDE MOUNT GUIDE WITH C-914 GUIDE CHANNEL IN DOOR



OPTION 3:

CSM-913-2HD SIDE MOUNT GUIDE WITH C-914 GUIDE CHANNEL IN DOOR



STEP 1

CUT C-201 OR C-914 ALUMINUM GUIDE CHANNEL TO CORRECT LENGTH IF REQUIRED (TYPICALLY, LENGTH EQUALS DOOR WIDTH. EXAMPLE: DOOR WIDTH IS 36" THEREFORE CHANNEL IS 36".)

STEP 2

PREPARE SLOT IN DOOR FOR THE GUIDE CHANNEL BEING USED. SEE LEFT FOR DETAILS OF THE C-201 & C-914 GUIDE CHANNELS RESPECTIVELY. IT IS RECOMMENDED TO MAKE THE SLOT AS ACCURATE AS POSSIBLE FOR SECURE FIT AND NEAT APPEARANCE.

STEP 3

DRILL HOLES IN C-201 & C-914 CHANNEL, AND PRE-DRILL HOLES IN DOOR. SCREW CHANNEL INTO PLACE WHILE KEEPING IT FLUSH WITH THE EDGE OF THE DOOR. (#8 SCREW SIZE RECOMMENDED)

STEP 4

LOCATE CSM-200-XXX, CSM-913-XXX OR CSM-913-2HD) SIDE MOUNT GUIDES AS REQUIRED AND SECURE TO WALL WITH SCREWS AS SUPPLIED ABOVE. **NOTE: THE XXX IS FOR THE DIFFERENT TRACKS THE SIDE MOUNT GUIDES CAN BE USED FOR. SEE CHART ABOVE FOR MORE DETAILS.**

STEP 5

CONTINUE WITH PROJECT BY INSTALLING HANGERS AND PLACING DOOR IN POSITION.



K.N. CROWDER MFG. INC.

1220 BURLOAK DRIVE
BURLINGTON, ONTARIO, CANADA, L7L 6B3
TELEPHONE: 905-315-9788 - TOLL FREE PHONE: 1-866-999-1KNC (1562)
FAX: 905-315-8090 - TOLL FREE FAX: 1-800-567-0123

WEBSITE: www.kncrowder.com -- E-MAIL: customerservice@kncrowder.com

K.N. CROWDER INC.

210 EIGHTH STREET SOUTH
LEWISTON, NEW YORK, U.S.A. 14092
TELEPHONE: 1-716-754-8247
TOLL FREE FAX: 1-800-567-0123