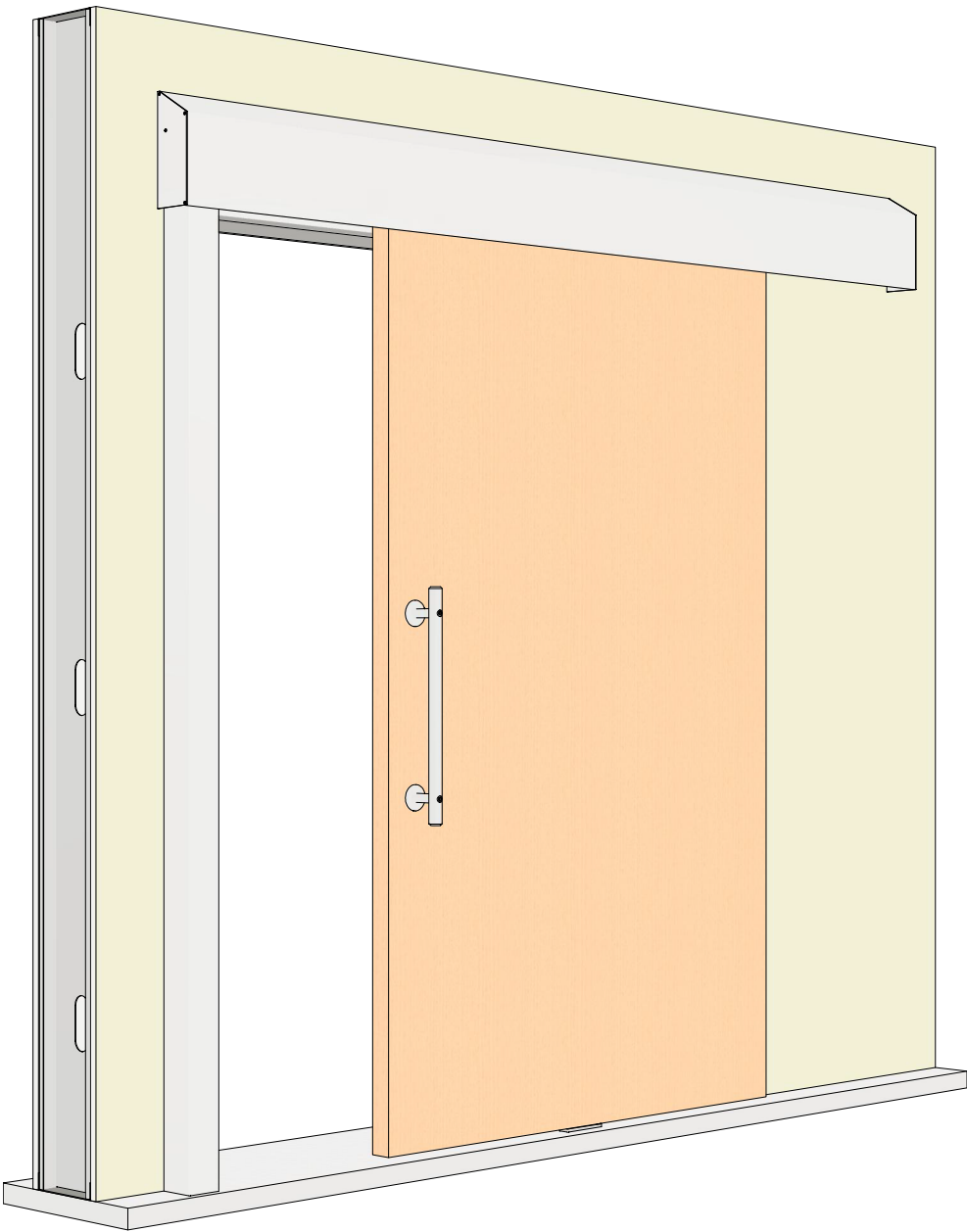


CROWDER SLIDE

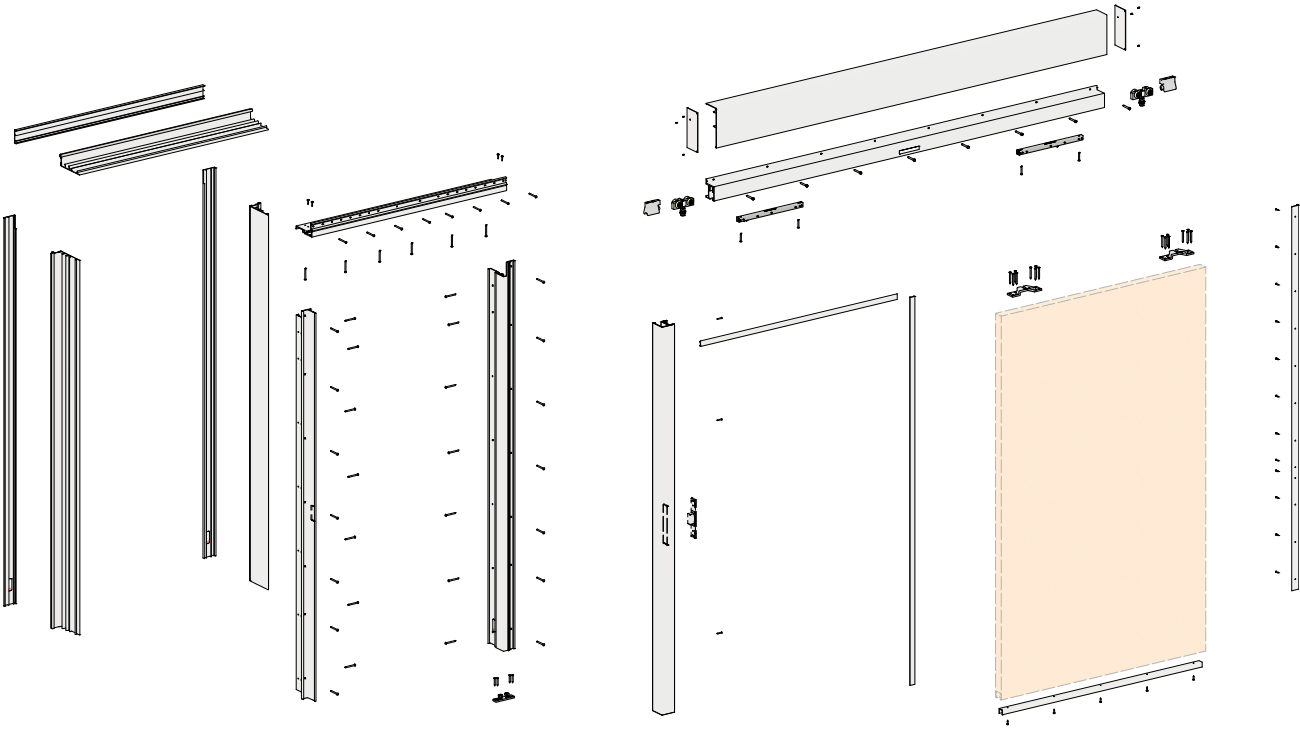
Sloped Side Mount - 7 1/4 in [184 mm] wall



FEATURES

- Designed to finish off a door opening with anodized or powder-coated aluminum snap-on covers and trim, to create a seamless and uniform look
- Provides quicker and easier installation than a traditional barn door kit built on-site by saving on installation and finishing labour
- 300 lbs. [136 kg] weight capacity
- 7 1/4 in [184 mm] consisting of 6 in [152.4 mm] stud with 5/8 in [15.8 mm] drywall per side (CS-7250)
- Other available Overall Wall Thicknesses:
 - 4 7/8 in [124 mm] consisting of 3 5/8 in [92 mm] stud with 5/8 in [15.8 mm] drywall per side (CS-4875)
 - Custom wall thickness
- Effortless opening and closing of the door with the Catch 'N' Close Closing System
- Angled fascia design to reduce collection of dust and facilitate cleaning
- Nylon wheels and precision ball bearings provide smooth and quiet door operation
- Heavy-duty double roller floor guide system ensures stability
- Adjustable in-track stops
- Angled flat bar reduces continuous friction with gasket for privacy control
- Acoustically-rated (AR) version also available
- Handed openings
- Cycle tested for up to 150,000 cycles without fail
- ADA Compliant (Barrier-free) design
- Available in clear or black anodized, mill finish or powder coated
- For 1 3/4 in [44.5 mm] doors

COMPLETE 1 DOOR KIT BREAKDOWN



OPTIONAL

Door Locks & Pulls



C-93EAL-CHL Electrified Auto-Locking Security Lockset
Barrier-Free (ADA Compliant)



C-95SLL-CHL Self-Latching, Self-Locking Security Lockset
Barrier-Free (ADA Compliant)



C-95SLL-OIHL Self-Latching, Self-Locking Privacy Lockset
Barrier-Free (ADA Compliant)



Pre-Machined Strike Prep

Each Crowder Slide System includes an upper track and fascia system with hangers, stops, end caps, and Catch 'N' Close in-track stops and closing devices, a jamb system for 7 1/4 in [184 mm] wall construction, and an automatic door bottom guide system-all in clear anodized unless otherwise specified.



Crowder Slide Application Form

Customer Name	Job No./Name	Date	Provided By
<hr/>			
Notes			

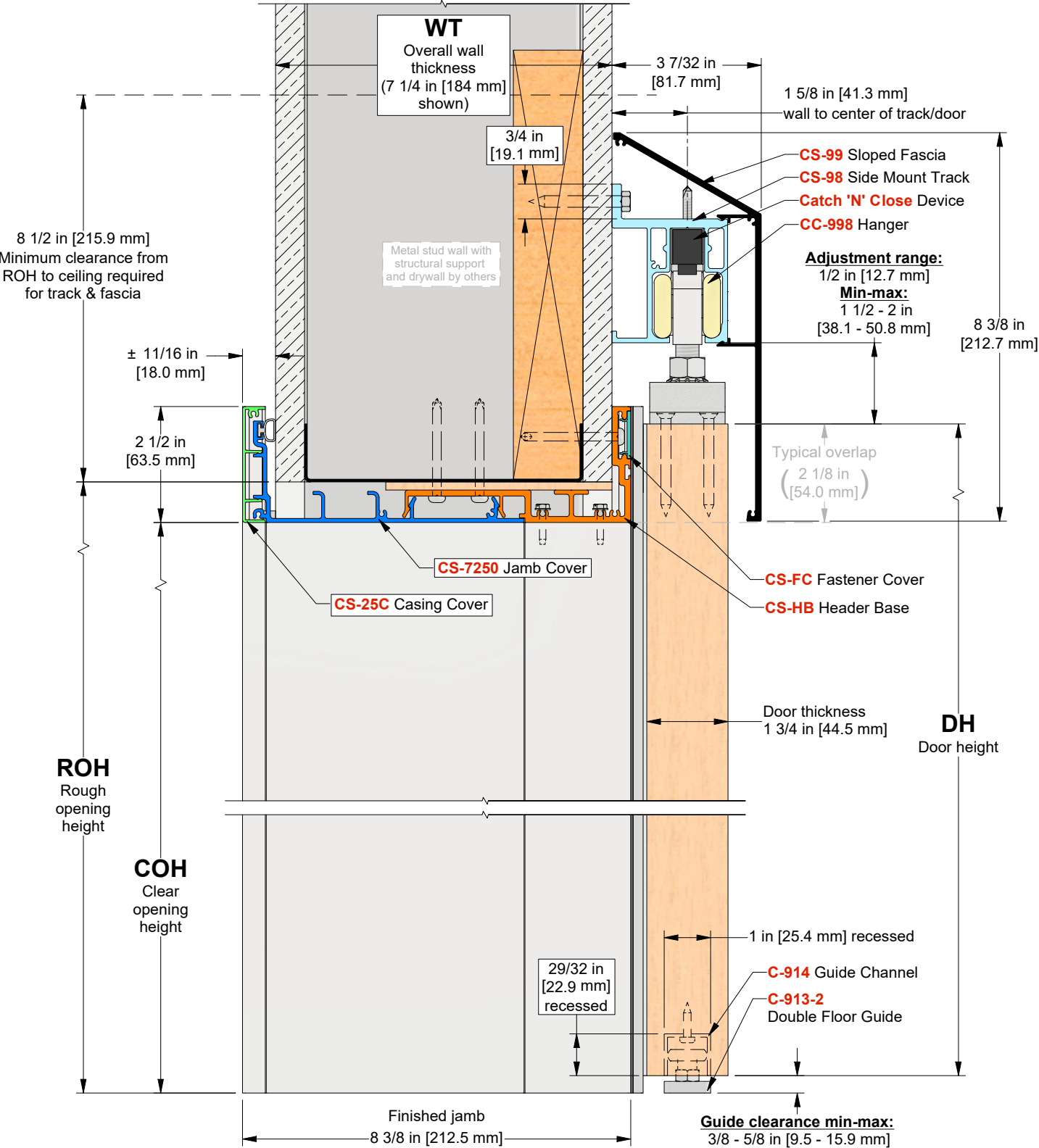
CROWDER SLIDE

Sloped Side Mount - 7 1/4 in [184 mm] wall

Note: Details are shown as Right-hand Outside [RHO] opening format



SECTION VIEW



Customer Name	Job No./Name	Date	Provided By
<hr/>			
Notes			

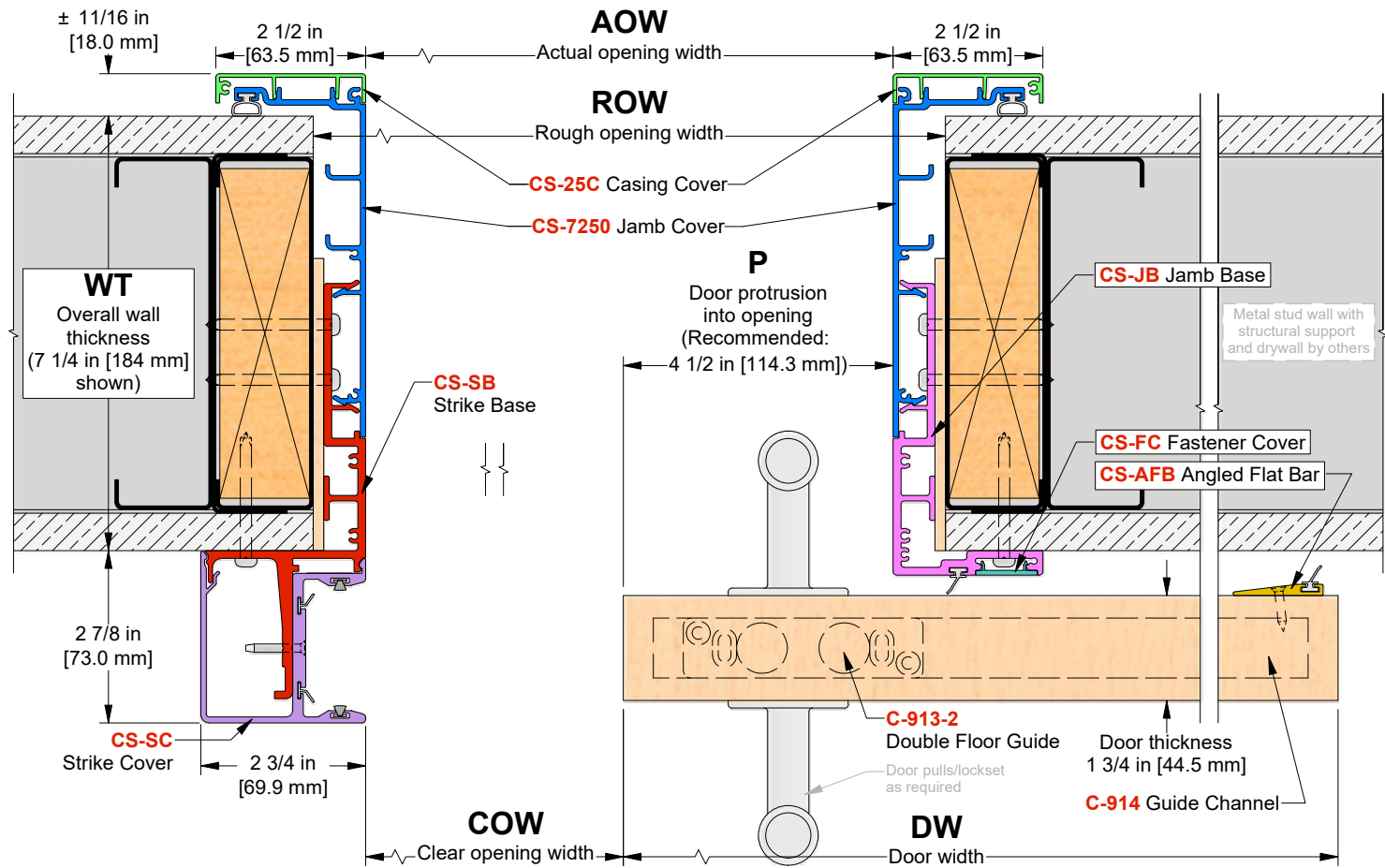
CROWDER SLIDE

Sloped Side Mount - 7 1/4 in [184 mm] wall

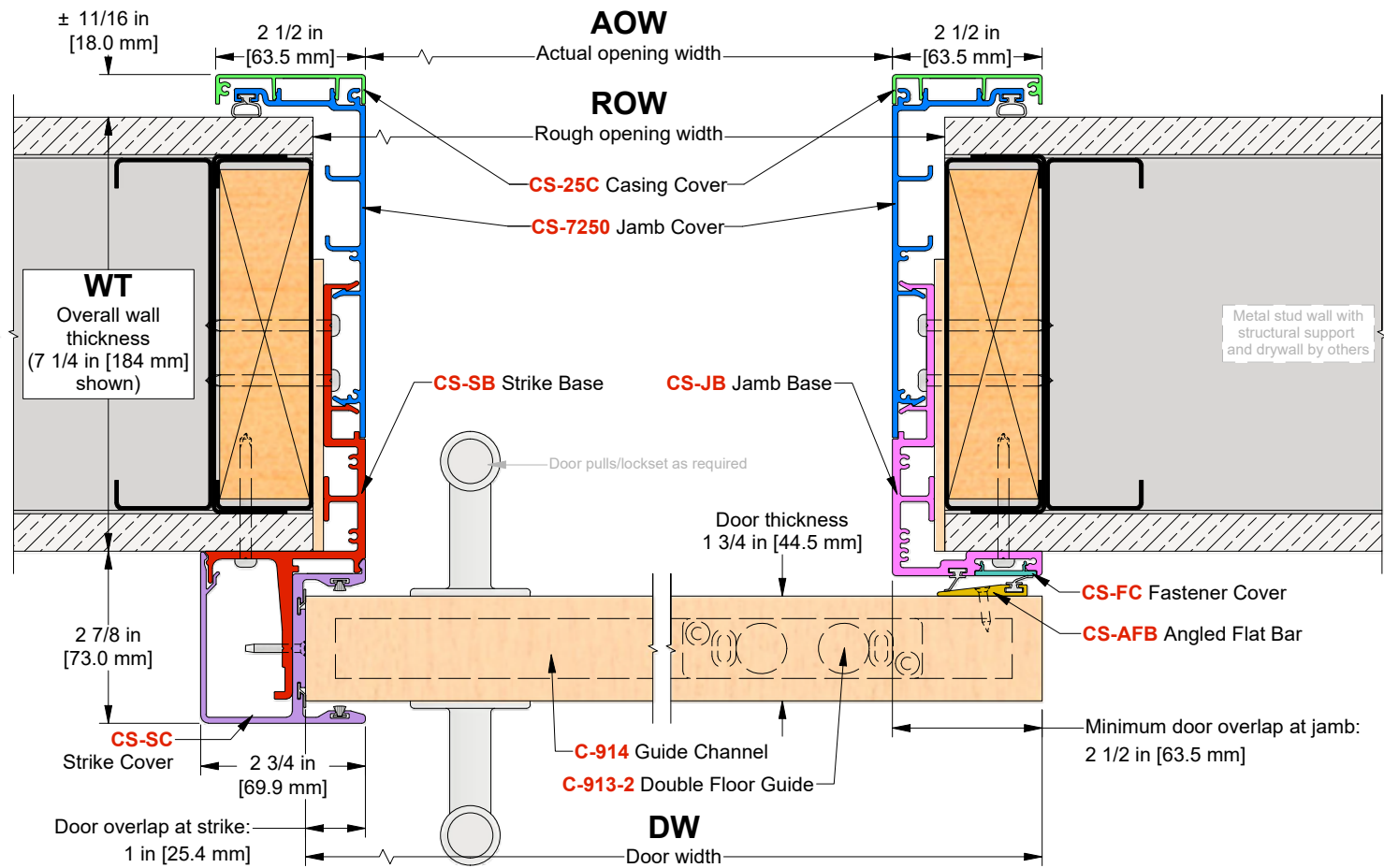
Note: Details are shown as Right-hand Outside [RHO] opening format



PLAN VIEW - OPEN POSITION



PLAN VIEW - CLOSED POSITION



Customer Name	Job No./Name	Date	Provided By
---------------	--------------	------	-------------

Notes

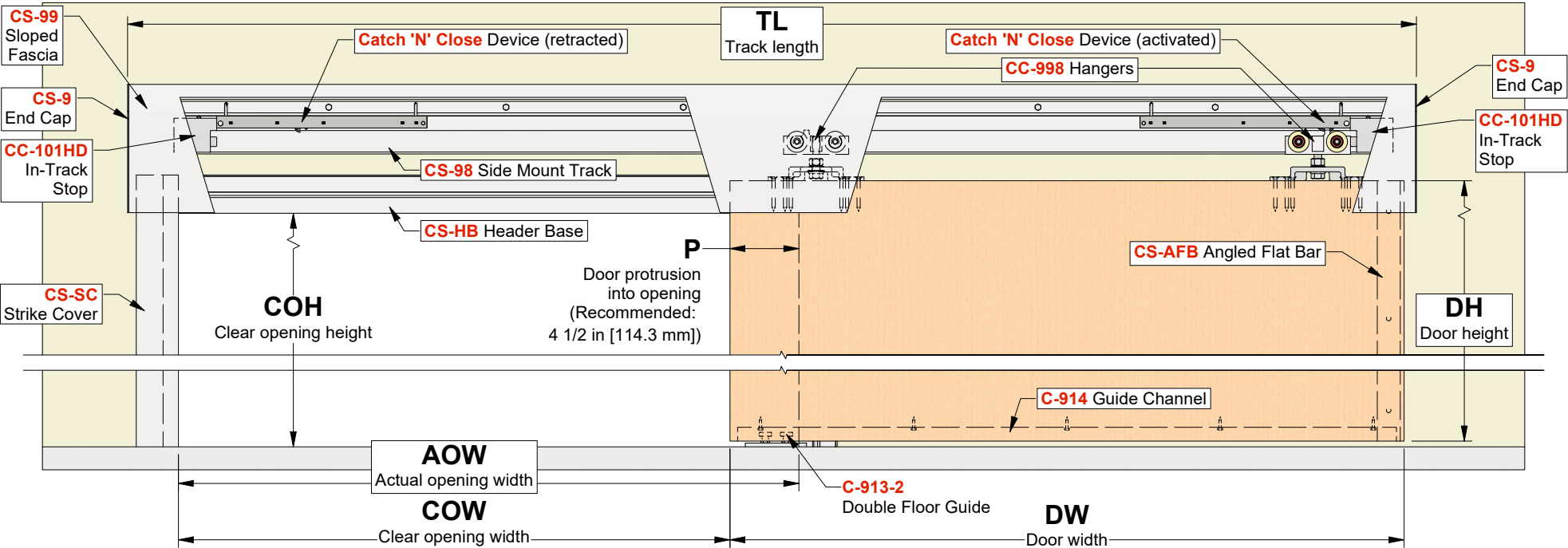
CROWDER SLIDE

Sloped Side Mount - 7 1/4 in [184 mm] wall

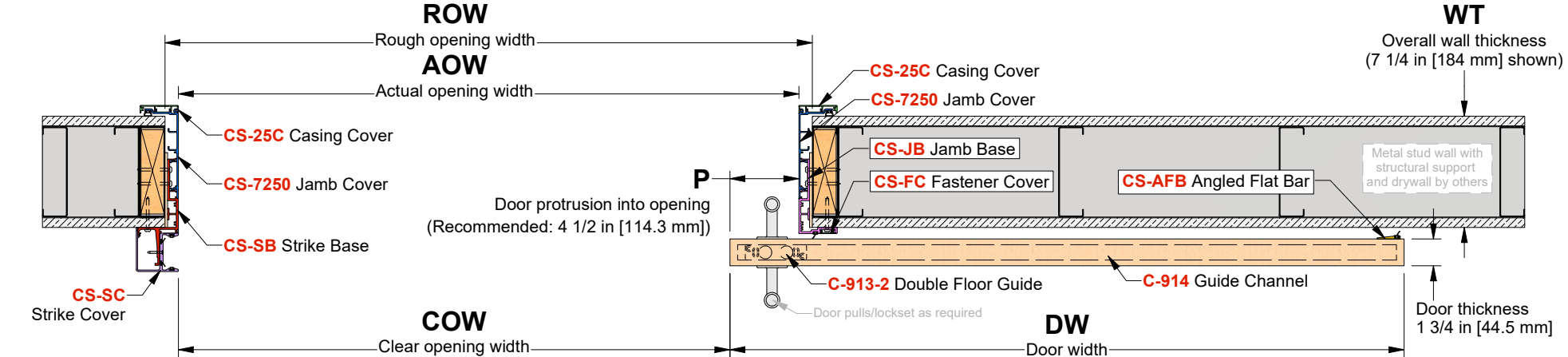


Note: Details are shown as Right-hand Outside [RHO] opening format

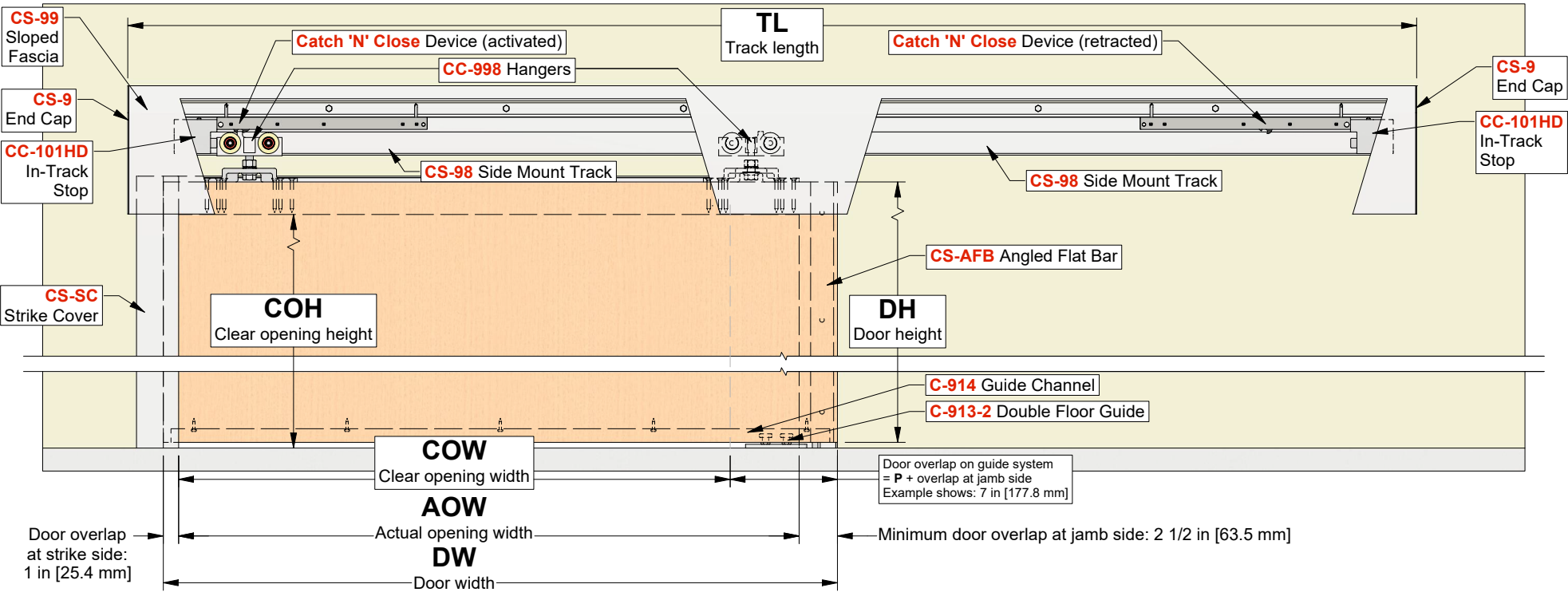
ELEVATION VIEW - OPEN POSITION



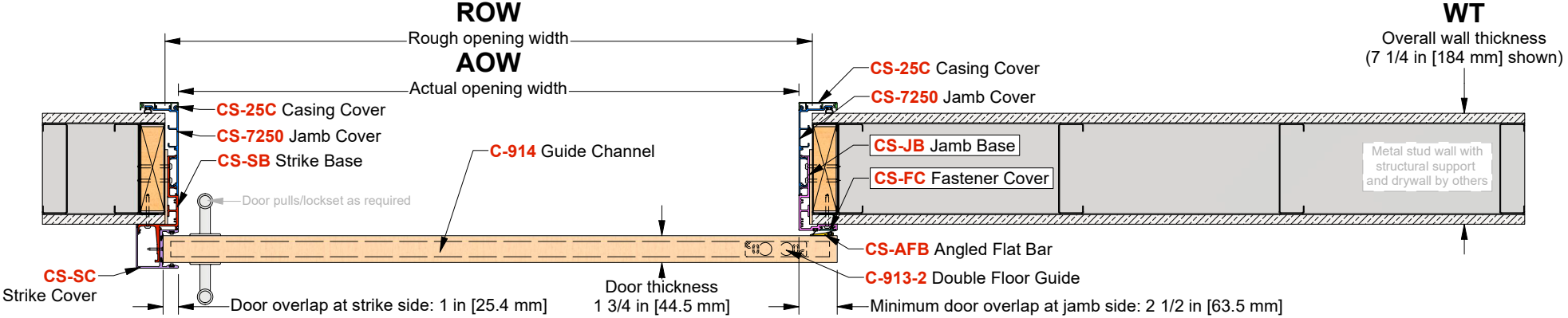
PLAN VIEW - OPEN POSITION



ELEVATION VIEW - CLOSED POSITION



PLAN VIEW - CLOSED POSITION



Customer Name	Job No./Name	Date	Provided By
---------------	--------------	------	-------------

Notes