

# Crowder Cantilever Application Form

1. Door weight?  
\_\_\_\_\_

2. Door size [width (**W**) x height (**H**) x thickness]?  
**Note: Door size should be at least 4" wider than finished opening to overlap walls by 2" on each side.**

**W** = \_\_\_\_\_ **H** = \_\_\_\_\_

3. Top or wall (barn/side) mounted track?  
 Top Mount \_\_\_\_\_ Wall (barn/side) Mount \_\_\_\_\_

4. Catch 'N' Close or no Catch 'N' Close option?  
**Catch 'N' Close** \_\_\_\_\_ No Catch 'N' Close \_\_\_\_\_

5. Gap (**G**) width required in middle of track for patient lift.

**G** = \_\_\_\_\_

6. Any wall space restrictions?  
**Note: space required on strike side (X) of opening is at least 5" beyond actual opening for 2" overlap and 3" stop and 3" longer than door width on stacking/pocket side (Y) for stop accomodation.**

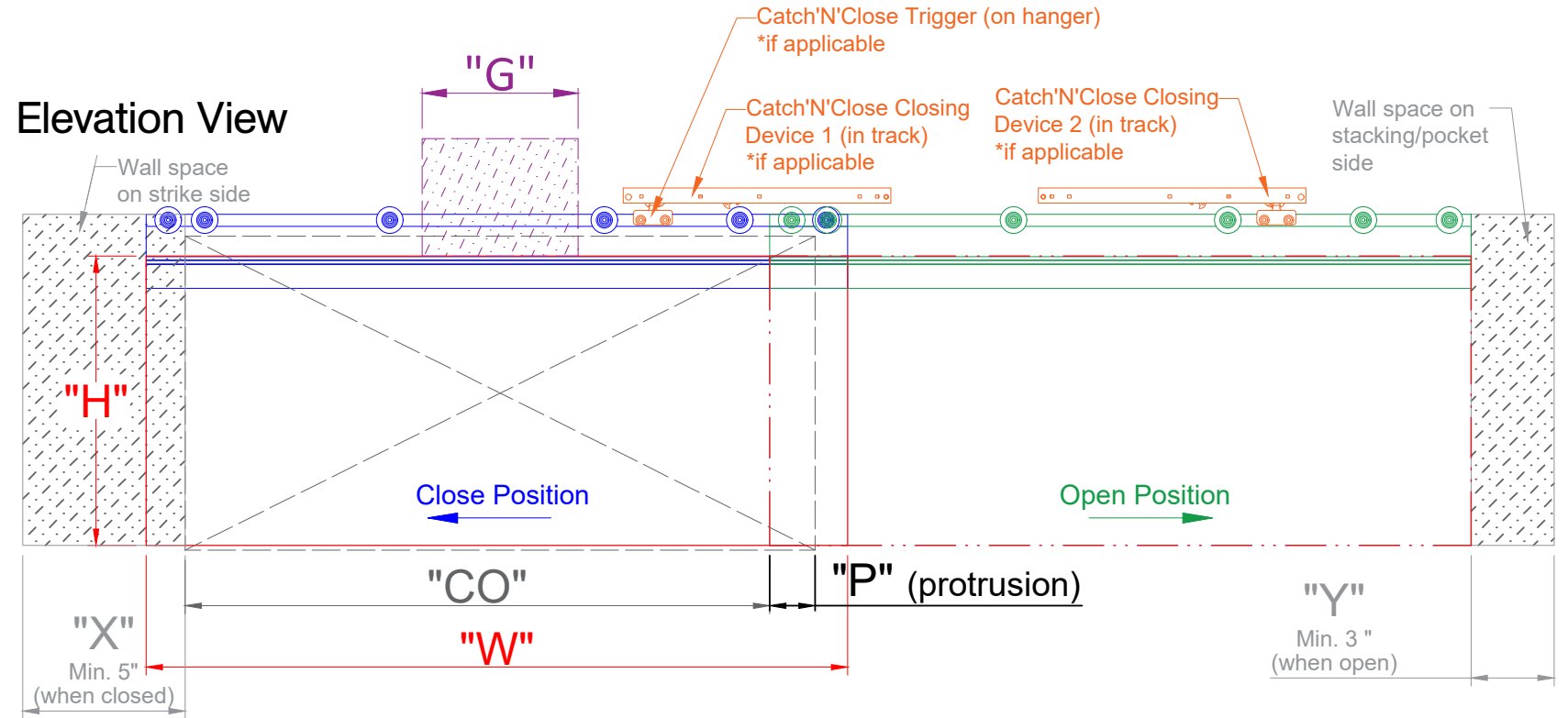
**X** = \_\_\_\_\_ **Y** = \_\_\_\_\_

7. Does door completely clear opening or will it protrude (**P**) into opening due to handle pulls? If it does protrude, please advise this distance.

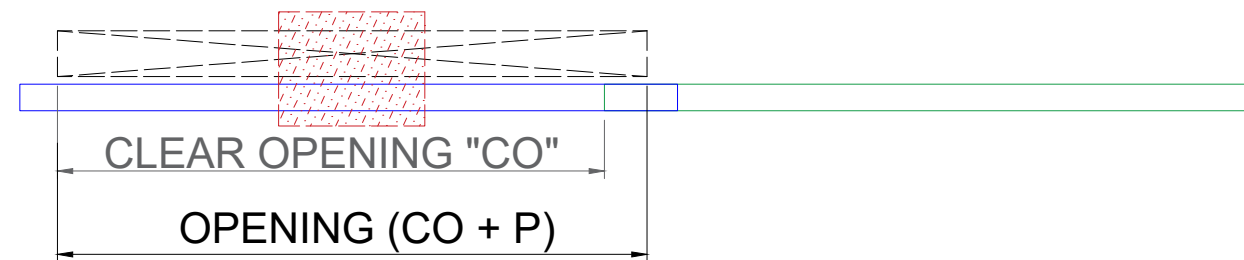
**P** = \_\_\_\_\_

8. What is the required clear opening width (**CO**)?

**CO** = \_\_\_\_\_



## Plan View



9. Number of openings:  
\_\_\_\_\_

**Approval is required**

Name \_\_\_\_\_

Signature \_\_\_\_\_

Date \_\_\_\_\_

PO# \_\_\_\_\_

SO# \_\_\_\_\_

Date \_\_\_\_\_

Product \_\_\_\_\_

Customer \_\_\_\_\_

Project \_\_\_\_\_

Drawn By \_\_\_\_\_

**Please forward any elevation and plan view drawings you have available for this application.**

**KN Crowder**

1220 Burloak Drive, Burlington, Ontario, Canada, L7L 6B3  
 T. 1-866-999-1562 customerservice@kncrowder.com kncrowder.com  
 © 2020-2024 K.N. Crowder Mfg. Inc. All Rights Reserved.

This drawing is the property of K.N. Crowder Mfg. Inc. and is subject to return upon demand. It must not be traced, copied, or reproduced in any manner, nor submitted to any outside parties for examination without our consent.