

Crowder Slide

Application Form



Job _____

Opening ID _____

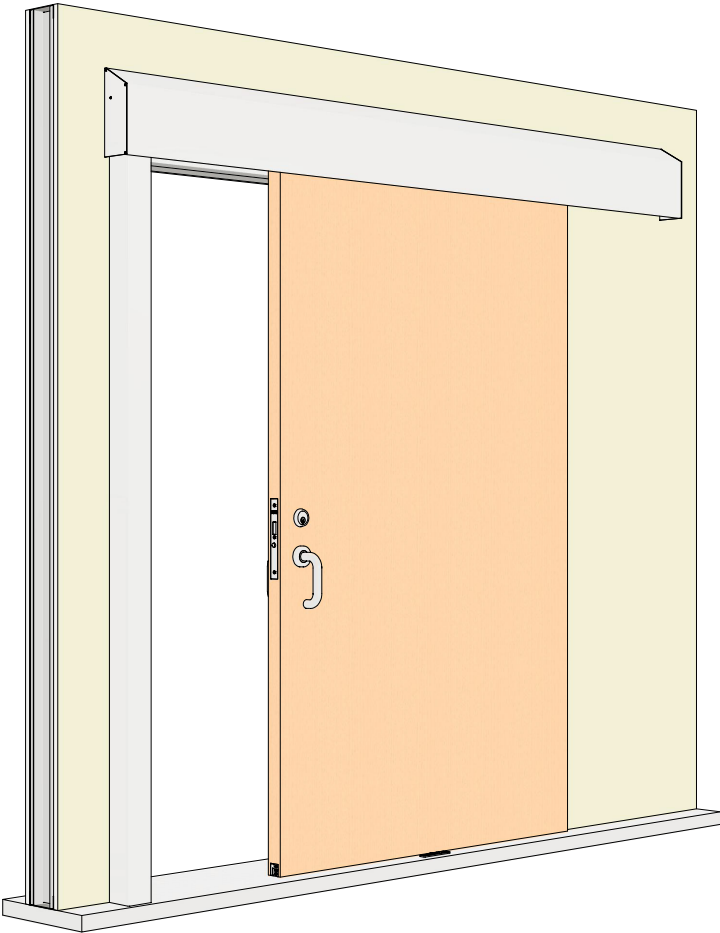
Submit a separate application form for each unique Opening ID. An Opening ID is considered unique if handing, clear opening dimensions, or door sizes differ within the project.

Company _____

Address _____

Name _____ Phone _____

Email _____

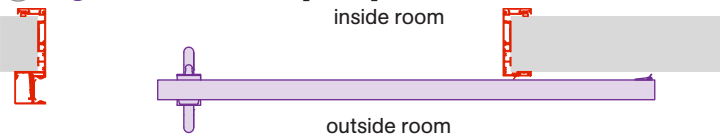


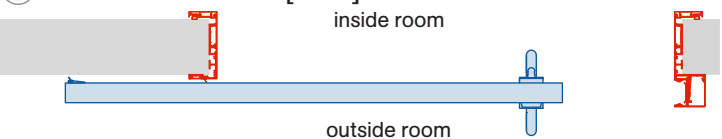
Note: Details are shown as **Right-hand Outside [RHO]** opening format

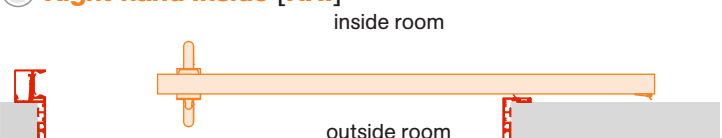
Opening Details

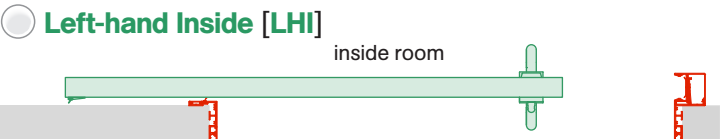
Number of openings _____
For this Opening ID

Door handing
If unspecified, handing defaults to **RHO** per drawings.

☐ **Right-hand Outside [RHO]**


☐ **Left-hand Outside [LHO]**


☐ **Right-hand Inside [RHI]**


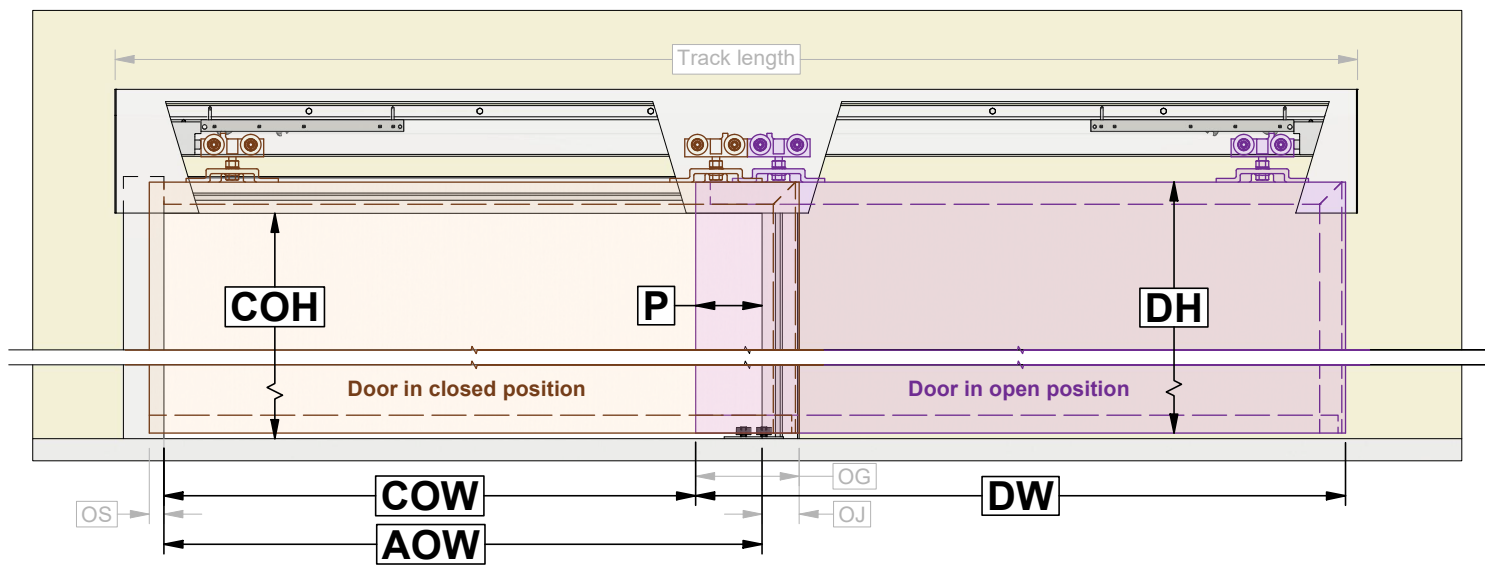
☐ **Left-hand Inside [LHI]**


Rough opening guidelines:



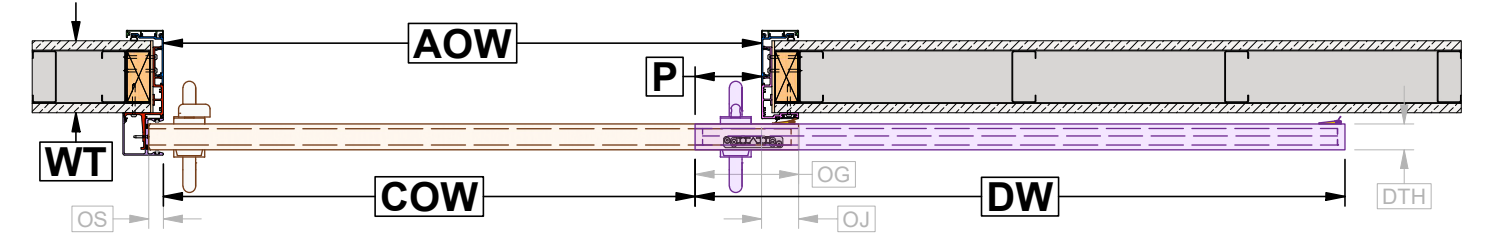
Elevation View

Note: Details are shown as **Right-hand Outside [RHO]** opening format



Plan View

Note: Details are shown as **Right-hand Outside [RHO]** opening format



Door protrusion [P] _____
Will the door fully clear the opening, or will a lockset or handle pull cause it to protrude? If protruding, a minimum of 4 1/2 in [114.3 mm] is recommended.

Clear opening size (width x height)
Measured with the door fully open: width from the door's front edge to the Strike Jamb, height from the floor to the underside of the Header Jamb. If system is to be based on actual door size, enter door details in the designated space to the right instead.

[COW] _____ x **[COH]** _____
If using a standard door height of 84 in [2134 mm], clear opening height is +/- 82 1/4 in [2089 mm].

Actual opening width [AOW] _____
Clear opening [CO] dimension + door protrusion [P] dimension.

Door overlap at strike side of opening [OS]
Fixed dimension = 1 in [25.4 mm]

Door overlap at jamb side of opening [OJ]
Minimum (default) = 2 1/2 in [63.5 mm].

Door overlap on guide system [OG]
Minimum 6 in [152.4 mm] required. Typically, door protrusion [P] dimension + door overlap at jamb side [OJ]

Door supplied by others.

Door width [DW] _____
Not required if door protrusion [P] and clear opening details are provided. Door overlap: 1 in [25.4 mm] on strike side and a minimum of 2 1/2 in [63.5 mm] on jamb side. KNC will use door details to provide an Opening Layout drawing for review.

Door height [DH] _____
Door overlap at Header Jamb is approximately 2 in [50.8 mm]

Door thickness [DTH] 1 3/4 in [45 mm]

Door weight _____
Maximum: 300 lbs [136 kg]

☐ lbs
☐ kg

Suggested minimum Opening Layout:

- **Door width [DW]** = 44 in [1118 mm]
- **Door height [DH]** = 84 in [2134 mm]
- **Door thickness [DTH]** = 1 3/4 in [45 mm]
- **Door protrusion [P]** = 4 1/2 in [114.3 mm]
- **Clear opening width [COW]** = 36 in [914 mm]
- **Clear opening height [COH]** = 82 1/4 in [2089 mm]
- **Actual opening width [AOW]** = 40 1/2 in [1029 mm]

Crowder Slide System

Finish

- ☐ ☐ Clear Anodized (standard)
- ☐ ☐ Black Anodized
- ☐ Custom Powder-Coat _____
Paint chip required to match and quote the custom finish

Overall wall thickness [WT]

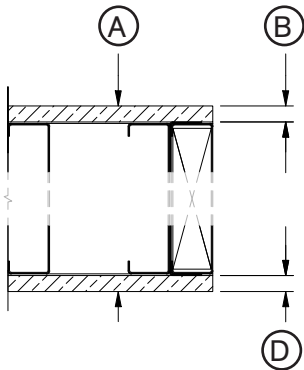
- ☐ 4 7/8 in [124 mm]

Overall wall thickness 4 7/8 in [124 mm]
Drywall 5/8 in [15.9 mm]
Framing stud width 3 5/8 in [92.1 mm]
Drywall 5/8 in [15.9 mm]
- ☐ 7 1/4 in [184 mm]

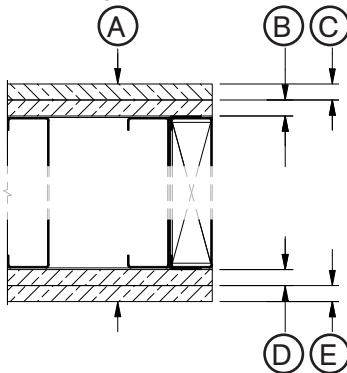
Overall wall thickness 7 1/4 in [184 mm]
Drywall 5/8 in [15.9 mm]
Framing stud width 6 in [152.4 mm]
Drywall 5/8 in [15.9 mm]

- ☐ Custom
Custom wall thickness may be available upon request and depending on the quantity of openings required

☐ Single drywall on both sides

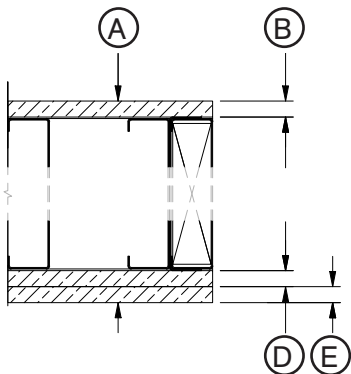


☐ Double drywall on both sides

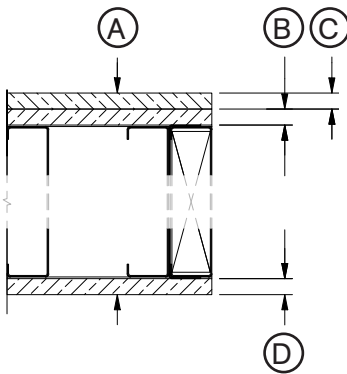


- A: _____
B: _____
C: _____
D: _____
E: _____

☐ Single drywall outside, double on inside



☐ Double drywall outside, single on inside



Fascia Style

☐ Square Fascia



☐ Sloped Fascia



Sealing

☐ Acoustically-rated (AR)

Includes perimeter medical-grade TPV gaskets, a double-guide system, and an automatic door bottom drop seal (CS-ADB and CS-200-2) – providing comprehensive light and sound control.

☐ Not acoustically-rated

Includes vertical gaskets integrated into the strike cover for added door protection, a vertical jamb gasket, and an angled flat bar at the back end of the door to enhance privacy. Supplied with the C-914 and C-913-2NRW double-guide system. Header gaskets not included.

Scribe

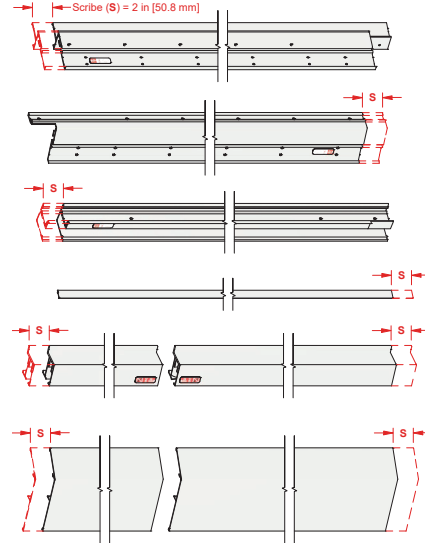
☐ No, cut to final size

(standard)

Select vertical jamb components, track, and fascia will be cut to final size. All other components will be supplied with minimum 1/2 in [12.7 mm] extra length for on-site cutting to final size.

☐ Yes, include scribe

Select vertical jamb components, track, and fascia will be supplied 2 in [50.8 mm] longer at the floor end, allowing installers to cut them on-site to accommodate uneven site conditions.



Optional Door Hardware

Self-Latching Sets

☐ C-95SLL-CHL Self-Latching, Self-Locking Security Lockset

Includes C-90-AS Adjustable Strike assembly
Barrier-free (ADA Compliant)

☐ C-95SLL-OIHL Self-Latching, Self-Locking Privacy Lockset

Includes C-90-AS Adjustable Strike assembly
Barrier-free (ADA Compliant)

☐ C-95SLL-LL Self-Latching Passage Set

Includes C-90-AS Adjustable Strike assembly
Barrier-free (ADA Compliant)



C-95SLL-OIHL shown

Finish required:

☐ 630 Satin Stainless Steel

☐ 622 Flat Black

☐ 613E Dark Bronze

☐ Custom _____

Electrified Lockset

☐ C-93EAL-CHL Electric

Auto-Locking Security Lockset

Includes C-93-AS Adjustable Electrified Strike assembly with wiring to connect to access control systems by others
Barrier-free (ADA Compliant)



Finish required:

☐ 630 Satin Stainless Steel

☐ 622 Flat Black

☐ 613E Dark Bronze

☐ Custom _____

Privacy Lockset

- ☐ C-92L-HLDP-AS
Privacy Lockset
Includes C-90-AS Adjustable
Strike assembly
Barrier-free (ADA Compliant)



Finish required:

- ☐ 626 Dull Chrome
- ☐ 605 Bright Brass
- ☐ 606 Dull Brass
- ☐ 613 Oil Rubbed Bronze
- ☐ 618 Bright Nickel Plated
- ☐ 619 Dull Nickel Plated
(closest match to Stainless Steel)
- ☐ 622 Flat Black
- ☐ 625 Bright Chrome
- ☐ Custom _____

Other Lockset

- ☐ Brand _____
- Model No. _____

Back-to-Back Handle Pulls

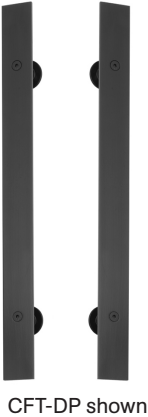
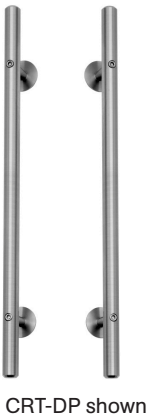
- Barrier-free (ADA Compliant)
- ☐ C-90DP
7 3/4 in [197 mm] round bar handle pulls



Finish required:

- ☐ 626 Dull Chrome
- ☐ 605 Bright Brass
- ☐ 606 Dull Brass
- ☐ 613 Oil Rubbed Bronze
- ☐ 618 Bright Nickel Plated
- ☐ 619 Dull Nickel Plated
(closest match to Stainless Steel)
- ☐ 622 Flat Black
- ☐ 625 Bright Chrome
- ☐ Custom _____

- ☐ CRT-DP18
18 in [457 mm] round bar handle pulls
- ☐ CRT-DP36
36 in [914 mm] round bar handle pulls
- ☐ CFT-DP18
18 in [457 mm] flat bar handle pulls
- ☐ CFT-DP36
36 in [914 mm] flat bar handle pulls



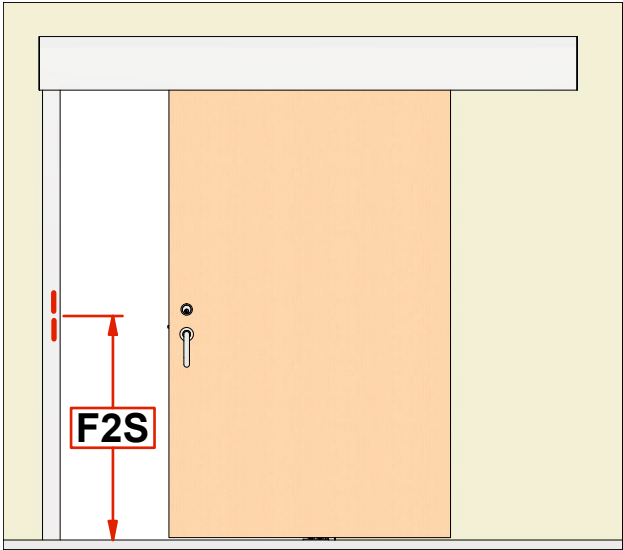
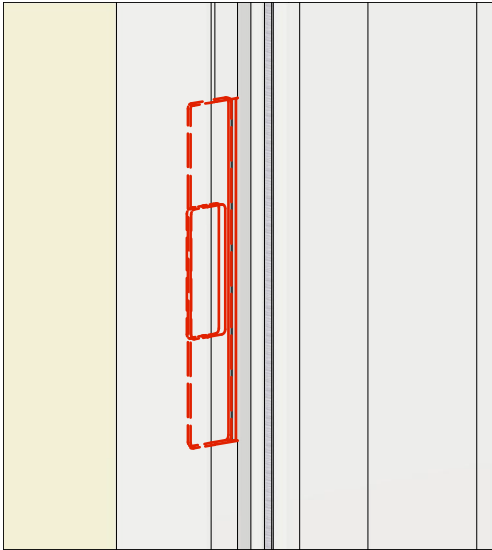
Finish required:

- ☐ 630 Satin Stainless Steel
- ☐ 622 Flat Black
- ☐ Custom _____

Other Handle Pulls

- ☐ Brand _____
- Model No. _____

Optional Strike Prep for Door Locking Hardware

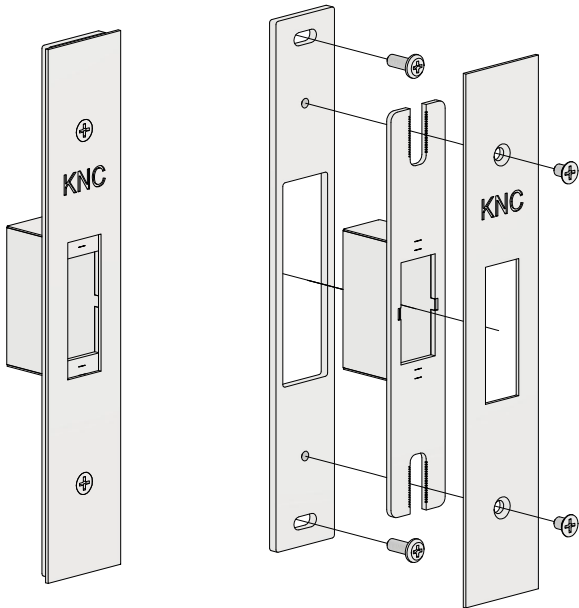


- ☐ No (skip the rest of this page and next)
- ☐ Yes

F2S: _____
Distance from floor to center of strike plate
Customer is responsible for accuracy of lockset in door to match up with strike plate location from floor.

Door Lock Strike Model:

- ☐ KN Crowder door hardware, as selected in previous section (C-90-AS Adjustable Strike assembly shown)



☐ Customer supplied door lock strike

Brand _____

Model No. _____

If the customer is providing the strike plate/dust-proof box assembly, please complete the strike prep details here for quoting purposes. When placing an order, please send a complete sample of the strike plate/dust-proof box assembly to the following address:
KN Crowder
1220 Burloak Drive
Burlington, Ontario, Canada
L7L 6B3
Ensure the PO number is clearly specified on the outside of the box.

Strike Plate Dimensions

Actual width [SPW] _____

Actual height [SPH] _____

Dust Box Dimensions

Actual Width [DBW] _____

Actual Height [DBH] _____

Depth [DBD] _____

Strike Plate & Dust Proof Box Dimensions

Overall Thickness [SPDBTH] _____

Strike Plate Flange Dimensions

Top Strike Flange [TSPF] _____

Bottom Strike Flange [BSPF] _____

☐ Customer supplied magnetic lock strike

Brand _____

Model No. _____

If the customer is providing the magnetic lock strike, please complete the strike prep details here for quoting purposes. When placing an order, please send a complete sample of the magnetic lock strike to the following address:

KN Crowder
1220 Burloak Drive
Burlington, Ontario, Canada
L7L 6B3

Ensure the PO number is clearly specified on the outside of the box.

Magnetic Lock Strike Dimensions

Top Flange Height [TMLF] _____

Flange Thickness [MLFTH] _____

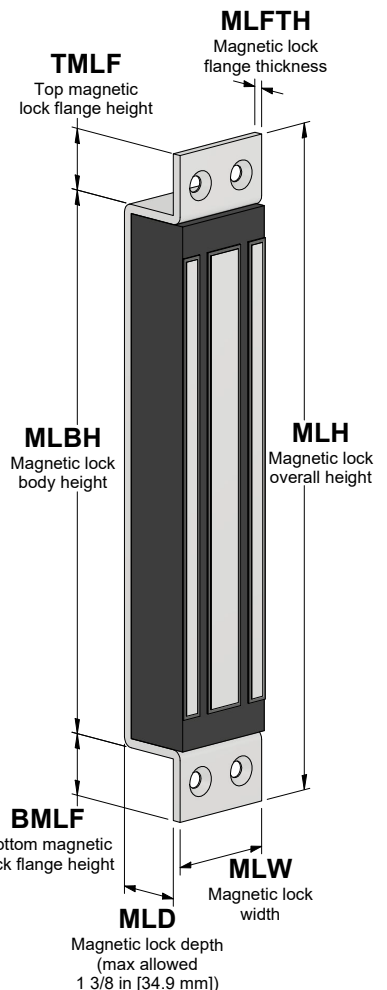
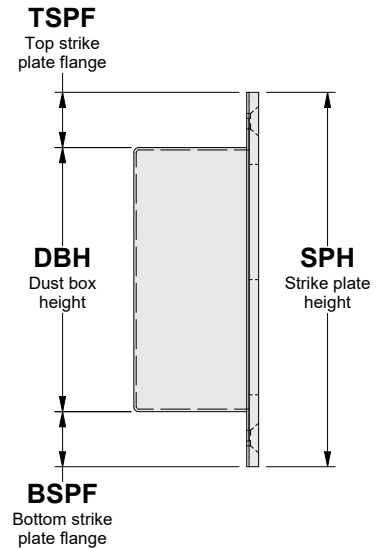
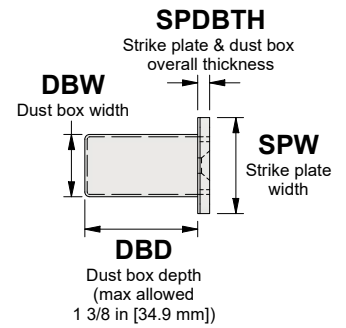
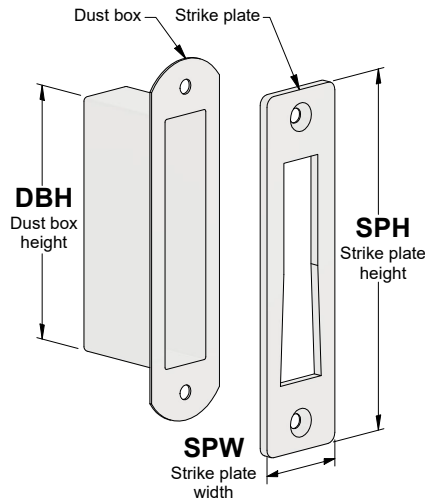
Body Height [MLBH] _____

Overall Height [MLH] _____

Bottom Flange Height [BMLF] _____

Depth [MLD] _____

Width [MLW] _____



Additional Notes

Please forward any elevation and plan view drawings you have available for this application.

KN Crowder

1220 Burloak Drive, Burlington, Ontario, Canada, L7L 6B3

T. 1-866-999-1562 customerservice@kncrowder.com kncrowder.com

© 2020-2025 K.N. Crowder Mfg. Inc. All Rights Reserved.

This drawing is the property of K.N. Crowder Mfg. Inc. and is subject to return upon demand.

It must not be traced, copied, or reproduced in any manner, nor submitted to any outside parties for examination without our consent.