

# Crowder Slide

## Application Form

R042026



Job \_\_\_\_\_

Opening ID \_\_\_\_\_

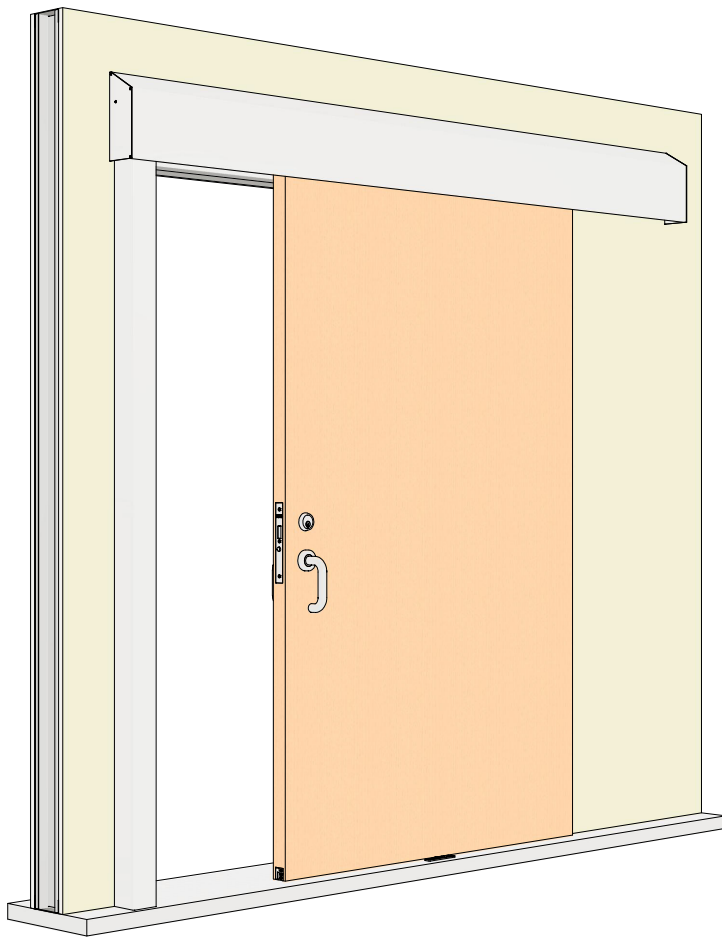
Submit a separate application form for each unique Opening ID. An Opening ID is considered unique if handing, clear opening dimensions, or door sizes differ within the project.

Company \_\_\_\_\_

Address \_\_\_\_\_

Name \_\_\_\_\_ Phone \_\_\_\_\_

Email \_\_\_\_\_



## Opening Details

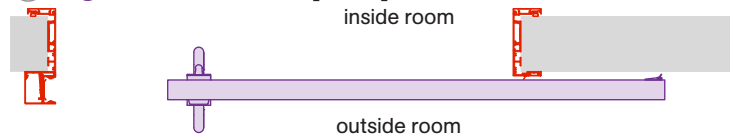
Number of openings \_\_\_\_\_

For this Opening ID

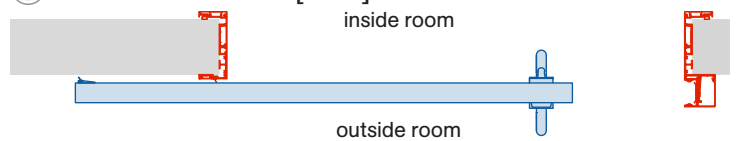
### Door handing

If unspecified, handing defaults to **RHO** per drawings.

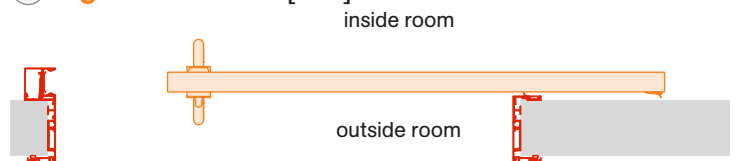
**Right-hand Outside [RHO]**



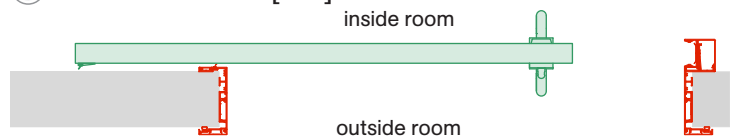
**Left-hand Outside [LHO]**



**Right-hand Inside [RHI]**



**Left-hand Inside [LHI]**



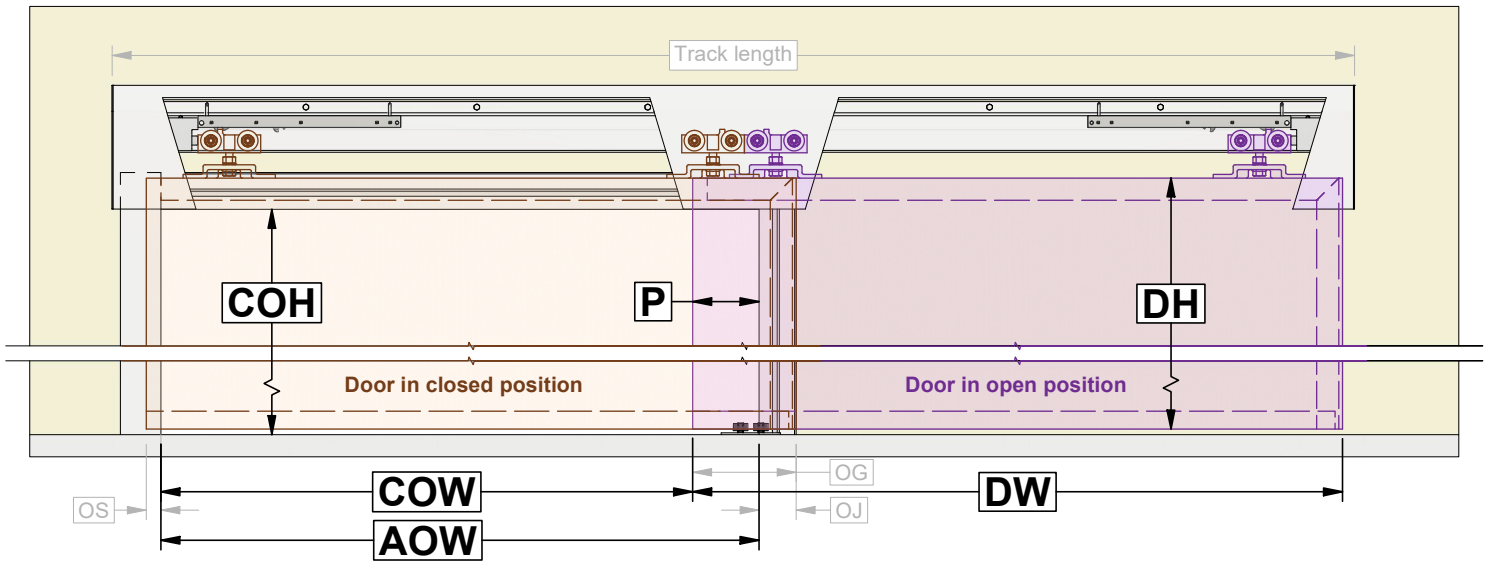
**Note:** Details are shown as **Right-hand Outside [RHO]** opening format

Rough opening guidelines:



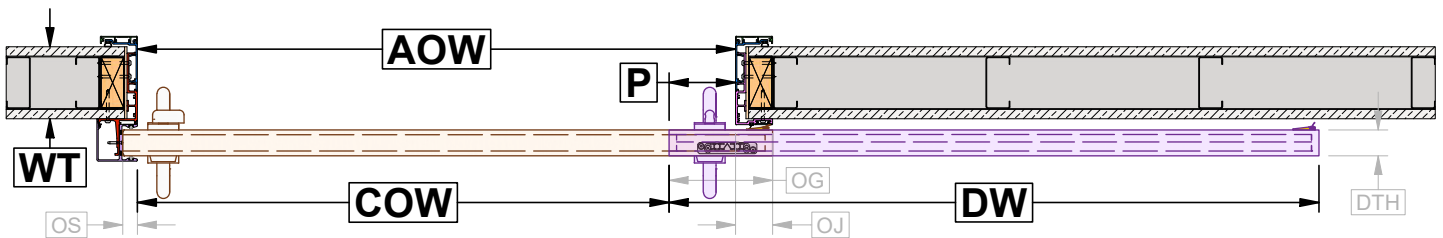
# Elevation View

**Note:** Details are shown as **Right-hand Outside [RHO]** opening format



# Plan View

**Note:** Details are shown as **Right-hand Outside [RHO]** opening format



**Door protrusion [P]** \_\_\_\_\_

Will the door fully clear the opening, or will a lockset or handle pull cause it to protrude? If protruding, a minimum of 4 3/4 in [120.7 mm] is recommended.

## Clear opening size (width x height)

Measured with the door fully open: width from the door's front edge to the Strike Jamb, height from the floor to the underside of the Header Jamb. If system is to be based on actual door size, enter door details in the designated space to the right instead.

**[COW]** \_\_\_\_\_ x **[COH]** \_\_\_\_\_

If using a standard door height of 84 in [2134 mm], clear opening height is +/- 82 1/4 in [2089 mm].

**Actual opening width [AOW]** \_\_\_\_\_

Clear opening [CO] dimension + door protrusion [P] dimension.

## Door overlap at strike side of opening [OS]

Fixed dimension = 3/4 in [19.1 mm]

## Door overlap at jamb side of opening [OJ]

Minimum (default) = 2 1/2 in [63.5 mm].

## Door overlap on guide system [OG]

Minimum 6 in [152.4 mm] required. Typically, door protrusion [P] dimension + door overlap at jamb side [OJ]

Door supplied by others.

**Door width [DW]** \_\_\_\_\_

Not required if door protrusion [P] and clear opening details are provided. Door overlap: 3/4 in [19.1 mm] on strike side and a minimum of 2 1/2 in [63.5 mm] on jamb side. KNC will use door details to provide an Opening Layout drawing for review.

**Door height [DH]** \_\_\_\_\_

Door overlap at Header Jamb is approximately 2 in [50.8 mm]

**Door thickness [DTH]** 1 3/4 in [45 mm]

**Door weight** \_\_\_\_\_  lbs

Maximum: 300 lbs [136 kg]  kg

## Suggested minimum Opening Layout:

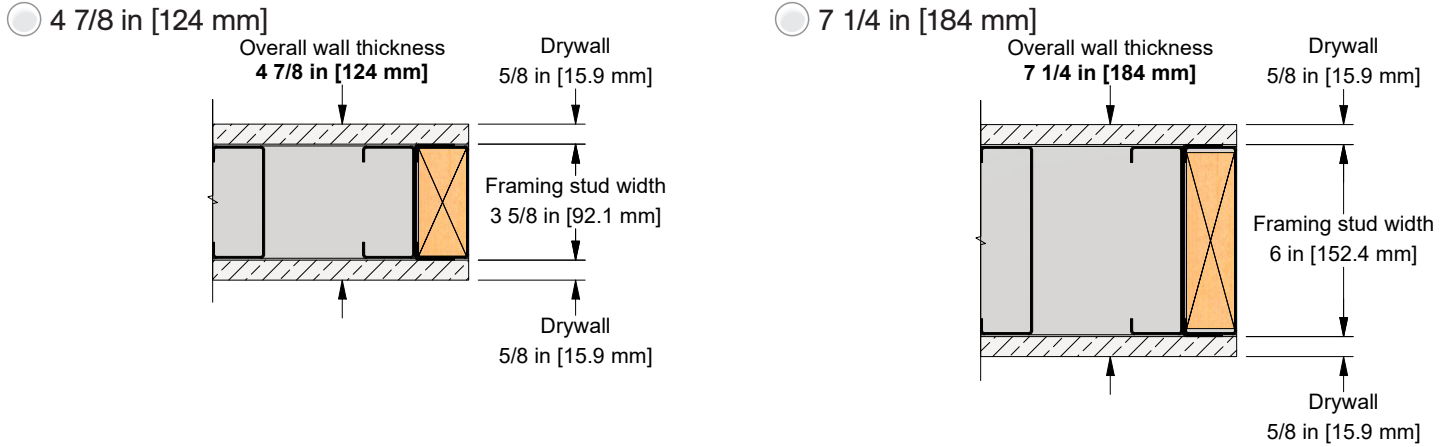
- **Door width [DW]** = 44 in [1118 mm]
- **Door height [DH]** = 84 in [2134 mm]
- **Door thickness [DTH]** = 1 3/4 in [45 mm]
- **Door protrusion [P]** = 4 3/4 in [120.7 mm]
- **Clear opening width [COW]** = 36 in [914 mm]
- **Clear opening height [COH]** = 82 1/4 in [2089 mm]
- **Actual opening width [AOW]** = 40 3/4 in [1035 mm]

# Crowder Slide System

## Finish

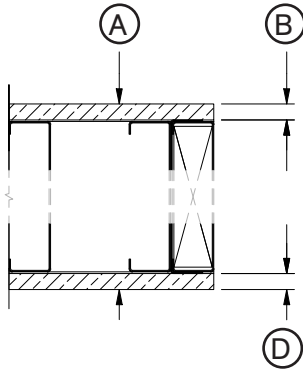
- Clear Anodized (standard)
- Black Anodized
- Custom Powder-Coat \_\_\_\_\_  
Paint chip required to match and quote the custom finish

## Overall wall thickness [WT]

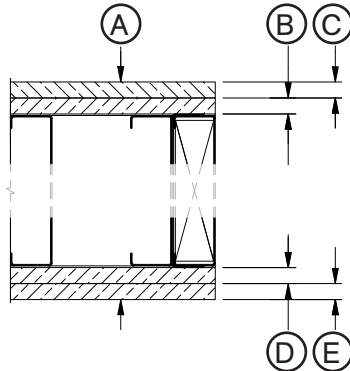


- Custom  
Custom wall thickness may be available upon request and depending on the quantity of openings required

- Single drywall on both sides

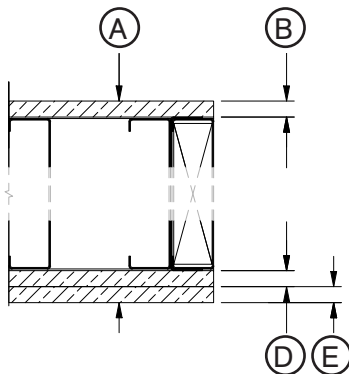


- Double drywall on both sides

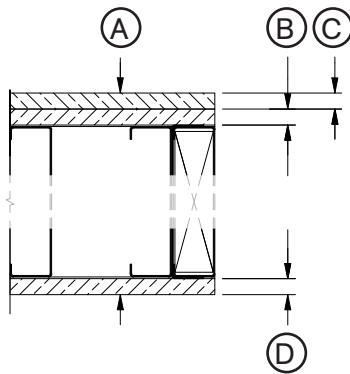


- A: \_\_\_\_\_
- B: \_\_\_\_\_
- C: \_\_\_\_\_
- D: \_\_\_\_\_
- E: \_\_\_\_\_

- Single drywall outside, double on inside



- Double drywall outside, single on inside



## Fascia Style

Square Fascia



Sloped Fascia



## Sealing

Acoustically-rated (AR)

Includes perimeter medical-grade TPV gaskets, a double-guide system, and an automatic door bottom drop seal (CS-ADB and CS-200-2) – providing comprehensive light and sound control.

Not acoustically-rated

Includes vertical gaskets integrated into the strike cover for added door protection, a vertical jamb gasket, and an angled flat bar at the back end of the door to enhance privacy. Supplied with the C-914 and C-913-2NRW double-guide system. Header gaskets not included.

## Scribe

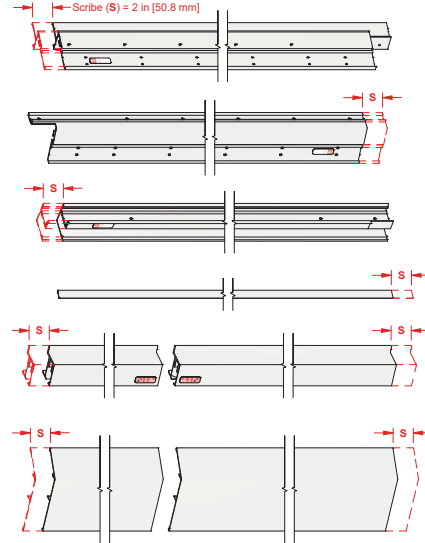
No, cut to final size

(standard)

Select vertical jamb components, track, and fascia will be cut to final size. All other components will be supplied with minimum 1/2 in [12.7 mm] extra length for on-site cutting to final size.

Yes, include scribe

Select vertical jamb components, track, and fascia will be supplied 2 in [50.8 mm] longer at the floor end, allowing installers to cut them on-site to accommodate uneven site conditions.



## Optional Door Hardware

### Self-Latching Sets

C-95SLL-CHL Self-Latching,

Self-Locking Security Lockset

Includes C-90-AS Adjustable

Strike assembly

Barrier-free (ADA Compliant)

C-95SLL-OIHL Self-Latching,

Self-Locking Privacy Lockset

Includes C-90-AS Adjustable

Strike assembly

Barrier-free (ADA Compliant)

C-95SLL-LL

Self-Latching Passage Set

Includes C-90-AS Adjustable

Strike assembly

Barrier-free (ADA Compliant)



C-95SLL-OIHL shown

### Finish required:

630 Satin Stainless Steel

622 Flat Black

613E Dark Bronze

Custom \_\_\_\_\_

### Electrified Lockset

C-93EAL-CHL Electric

Auto-Locking Security Lockset

Includes C-93-AS Adjustable Electrified

Strike assembly with wiring to connect to

access control systems by others

Barrier-free (ADA Compliant)



### Finish required:

630 Satin Stainless Steel

622 Flat Black

613E Dark Bronze

Custom \_\_\_\_\_

**Privacy Lockset**

- C-92L-HLDP-AS  
Privacy Lockset  
Includes C-90-AS Adjustable  
Strike assembly  
Barrier-free (ADA Compliant)



**Finish required:**

- 626 Dull Chrome
- 605 Bright Brass
- 606 Dull Brass
- 613 Oil Rubbed Bronze
- 618 Bright Nickel Plated
- 619 Dull Nickel Plated  
(closest match to Stainless Steel)
- 622 Flat Black
- 625 Bright Chrome
- Custom \_\_\_\_\_

**Other Lockset**

- Brand \_\_\_\_\_
- Model No. \_\_\_\_\_

**Back-to-Back Handle Pulls**

Barrier-free (ADA Compliant)

- C-90DP  
7 3/4 in [197 mm] round bar handle pulls

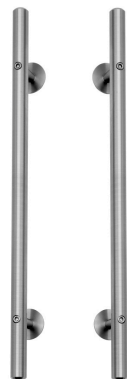


C-90DP shown

**Finish required:**

- 626 Dull Chrome
- 605 Bright Brass
- 606 Dull Brass
- 613 Oil Rubbed Bronze
- 618 Bright Nickel Plated
- 619 Dull Nickel Plated  
(closest match to Stainless Steel)
- 622 Flat Black
- 625 Bright Chrome
- Custom \_\_\_\_\_

- CRT-DP18  
18 in [457 mm] round bar handle pulls
- CRT-DP36  
36 in [914 mm] round bar handle pulls
- CFT-DP18  
18 in [457 mm] flat bar handle pulls
- CFT-DP36  
36 in [914 mm] flat bar handle pulls



CRT-DP shown



CFT-DP shown

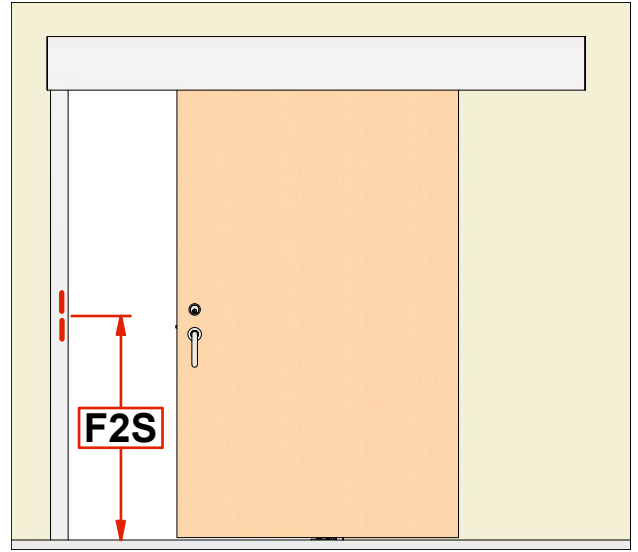
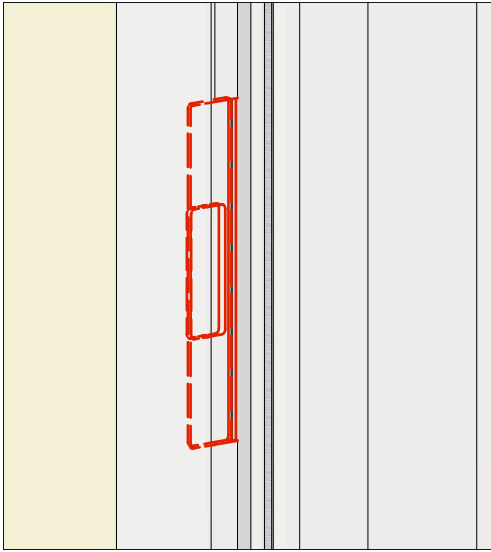
**Finish required:**

- 630 Satin Stainless Steel
- 622 Flat Black
- Custom \_\_\_\_\_

**Other Handle Pulls**

- Brand \_\_\_\_\_
- Model No. \_\_\_\_\_

# Optional Strike Prep for Door Locking Hardware



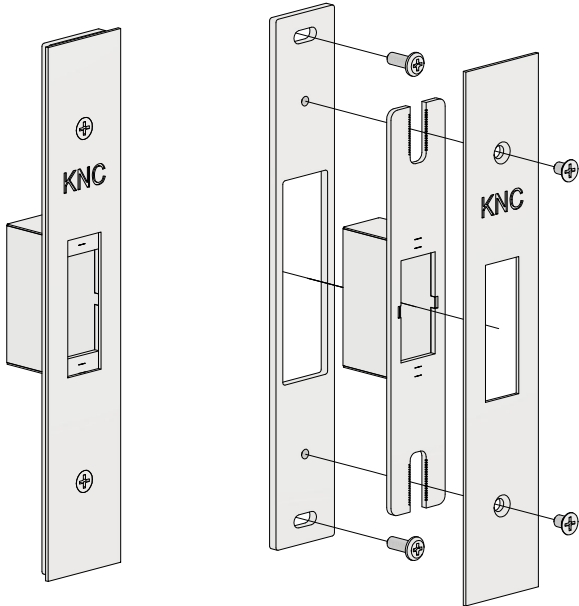
No (skip the rest of this page and next)

Yes

**F2S:** \_\_\_\_\_  
Distance from floor to center of strike plate  
Customer is responsible for accuracy of lockset in door to match up with strike plate location from floor.

## Door Lock Strike Model:

KN Crowder door hardware, as selected in previous section (C-90-AS Adjustable Strike assembly shown)

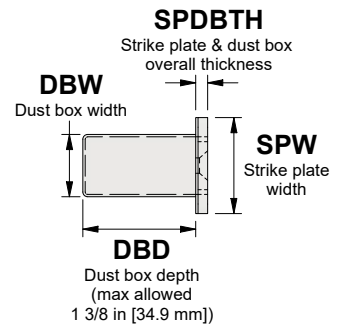
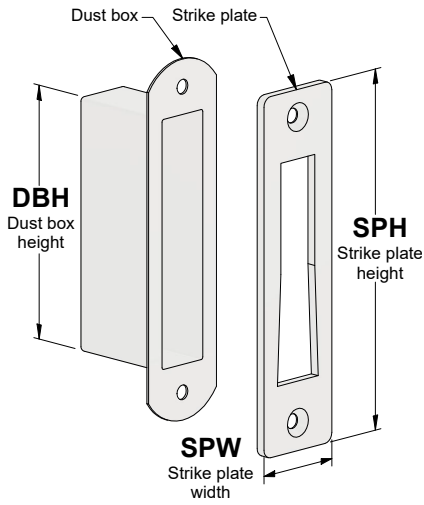


Customer supplied door lock strike

Brand \_\_\_\_\_

Model No. \_\_\_\_\_

If the customer is providing the strike plate/dust-proof box assembly, please complete the strike prep details here for quoting purposes. When placing an order, please send a complete sample of the strike plate/dust-proof box assembly to the following address:  
 KN Crowder  
 1220 Burloak Drive  
 Burlington, Ontario, Canada  
 L7L 6B3  
 Ensure the PO number is clearly specified on the outside of the box.



**Strike Plate Dimensions**

Actual width [SPW] \_\_\_\_\_

Actual height [SPH] \_\_\_\_\_

**Dust Box Dimensions**

Actual Width [DBW] \_\_\_\_\_

Actual Height [DBH] \_\_\_\_\_

Depth [DBD] \_\_\_\_\_

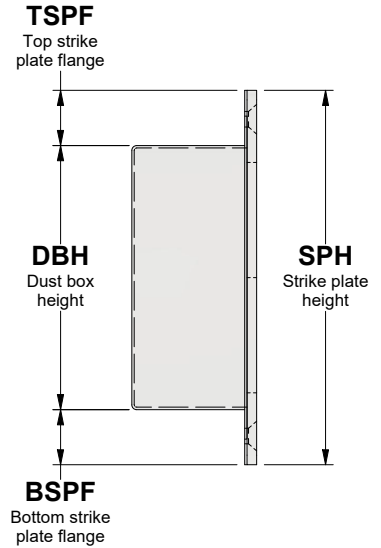
**Strike Plate & Dust Proof Box Dimensions**

Overall Thickness [SPDBTH] \_\_\_\_\_

**Strike Plate Flange Dimensions**

Top Strike Flange [TSPF] \_\_\_\_\_

Bottom Strike Flange [BSPF] \_\_\_\_\_



Customer supplied magnetic lock strike

Brand \_\_\_\_\_

Model No. \_\_\_\_\_

If the customer is providing the magnetic lock strike, please complete the strike prep details here for quoting purposes. When placing an order, please send a complete sample of the magnetic lock strike to the following address:  
 KN Crowder  
 1220 Burloak Drive  
 Burlington, Ontario, Canada  
 L7L 6B3  
 Ensure the PO number is clearly specified on the outside of the box.

**Magnetic Lock Strike Dimensions**

Top Flange Height [TMLF] \_\_\_\_\_

Flange Thickness [MLFTH] \_\_\_\_\_

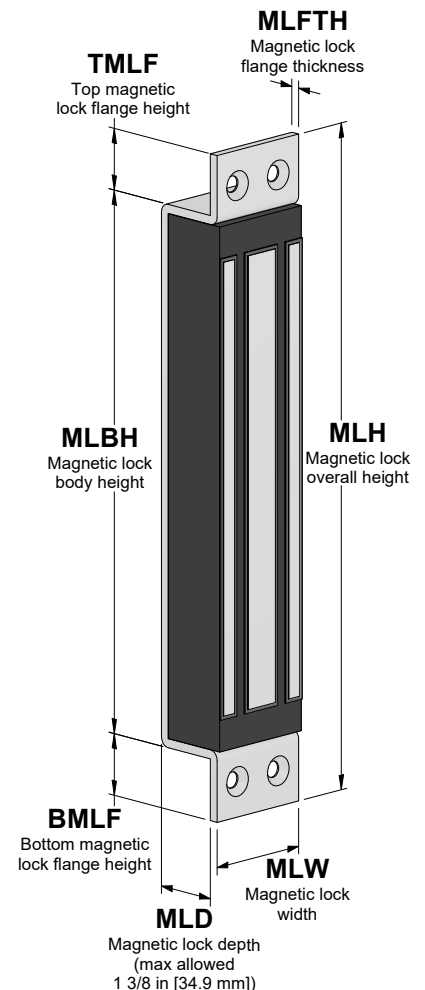
Body Height [MLBH] \_\_\_\_\_

Overall Height [MLH] \_\_\_\_\_

Bottom Flange Height [BMLF] \_\_\_\_\_

Depth [MLD] \_\_\_\_\_

Width [MLW] \_\_\_\_\_



# Additional Notes

**Please forward any elevation and plan view drawings you have available for this application.**

**KN Crowder**

1220 Burloak Drive, Burlington, Ontario, Canada, L7L 6B3  
T. 1-866-999-1562 customerservice@kncrowder.com  
© 2020-2026 K.N. Crowder Mfg. Inc. All Rights Reserved.

kncrowder.com

This drawing is the property of K.N. Crowder Mfg. Inc. and is subject to return upon demand.  
It must not be traced, copied, or reproduced in any manner, nor submitted to any outside parties for examination without our consent.