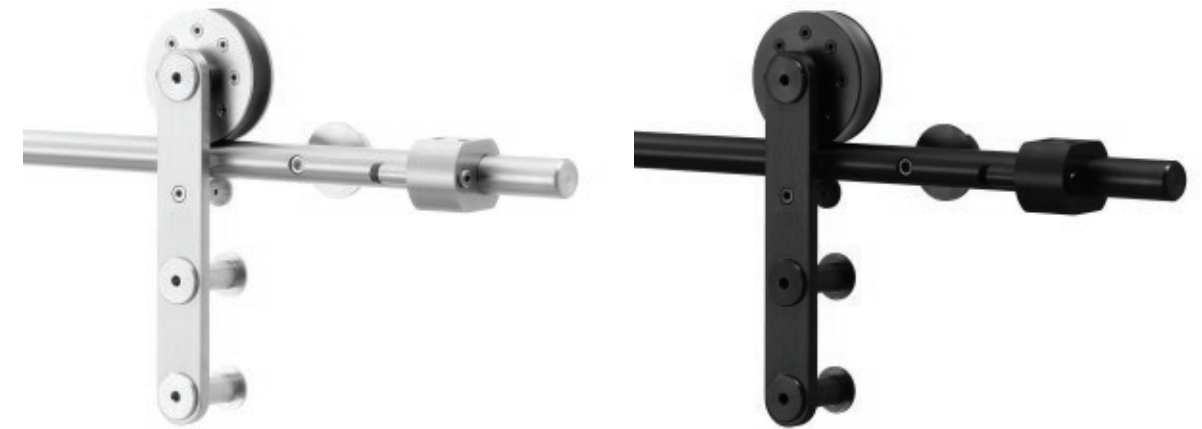




CROWDER ROUND TRACK SERIES



CRT-102-SS & CRT-102-BP
Up to 350 lbs. [159 kg] per door



1-3/4"

Crowder Round Track 100 series features our classic strap mount hangers for an ultra-modern look.

3-1/2" [88.9mm] Delrin wheels, precision ball bearings and shock absorbing stops come together to provide extremely smooth and quiet door operation. All CRT components are precision-machined 304 stainless steel finished in black or polished to a satin finish.



1-3/8"

How to Specify/Order:

Kit Code: CRT-102-SS X [track length] 1DR KIT (For 1-3/4" [44.5 mm] door)

Kit Code: CRT-102-38-SS X [track length] 1DR KIT (For 1-3/8" [34.9 mm] door)

Kit Code: CRT-102-BP X [track length] 1DR KIT (For 1-3/4" [44.5 mm] door)

Kit Code: CRT-102-38-BP X [track length] 1DR KIT (For 1-3/8" [34.9 mm] door)

Note: [track length] = door width x 2 (for 1 door kits)

Optional Door Handle Pulls:

For 18" [457 mm] back to back handle pulls:

CRT-DP18 x 630 (Stainless Steel)

CRT-DP18 x 622 (Black Finish)

For 36" [914 mm] back to back handle pulls:

CRT-DP36 x 630 (Stainless Steel)

CRT-DP36 x 622 (Black Finish)



EXPOSED BARN DOOR SYSTEMS
ARCHITECTURE & DESIGN COLLECTION