

SDL-FP

Fire Rated Steel Louver



KNC



Adjustable Z-blade louver with fusible link activated at 165°F is ideal for use in steel and composite fire doors up to 1 1/2 hour rating. The self-attaching frame style is ideal for installation in existing door cutouts.

Specifications

Material

18-gauge CRS frame.
Minimum size is 10 in [254 mm] x 6 in [152.4 mm]
Maximum size is 24 in [609.6 mm] x 24 in [609.6 mm]

Construction

Louver: Z-blade louver is riveted to the operating bar and frame at 1 in [25.4 mm] intervals to welded 1 9/16 in [39.6 mm] deep frame. Mechanical Stop holds blades open. Frame: Mitered and welded corners: screws fastened through prepared frame into louver core leaving corridor side of frame free of fasteners.

Operation

Adjustable blades of 16-gauge CRS pivot on cadmium-plated steel rivets. The blades are operated by a manual adjusting lever. A spring-loaded fusible link mechanism is incorporated into the design; upon melting of the link, the action bar is actuated, thereby closing, and locking all the blades.

Door

For 1 3/4 in [44.5 mm] steel or composite door

Finish

Standard mineral bronze powder coat

Fasteners

#8 x 3/4" phillips flathead screws to match finish

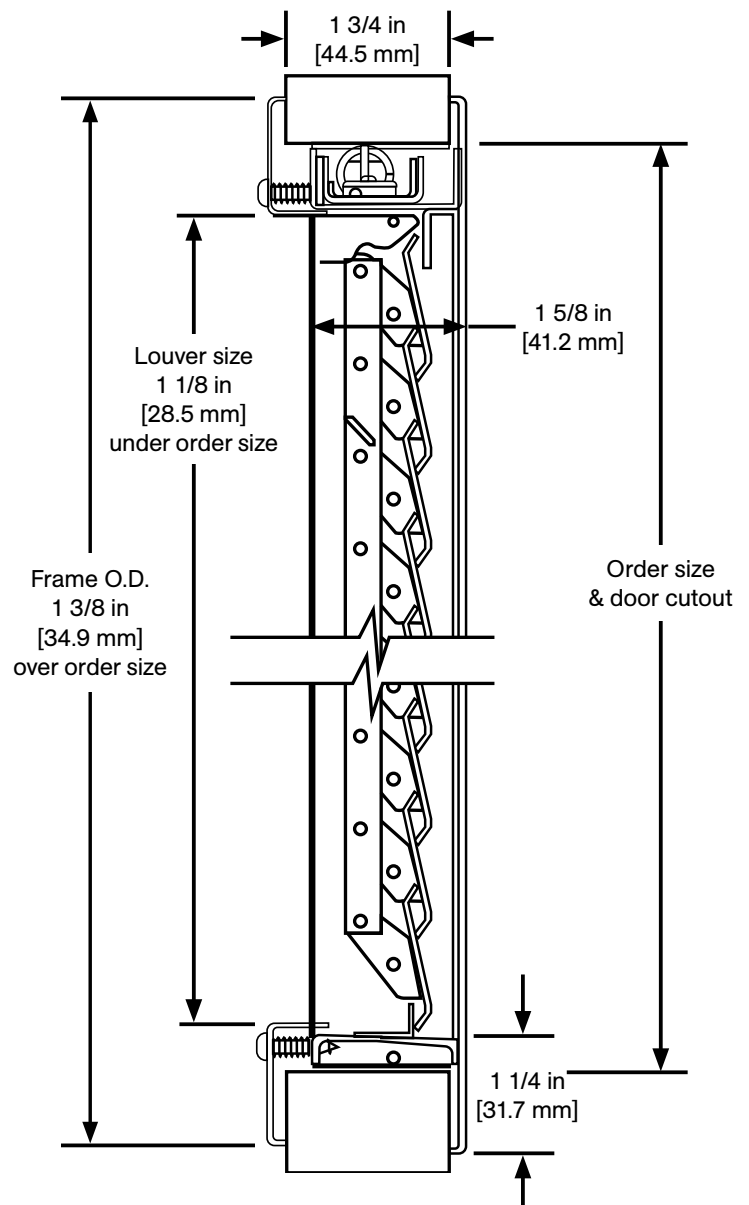
Free Flow Area

45% free area

Fire Ratings (with UL and ITS classification marks)

Tested & Listed for UL10C, and classified in accordance with UBC7-2-94, ASTM E152, CAN/ULC S104, NFPA 252. Install in accordance with NFPA80.

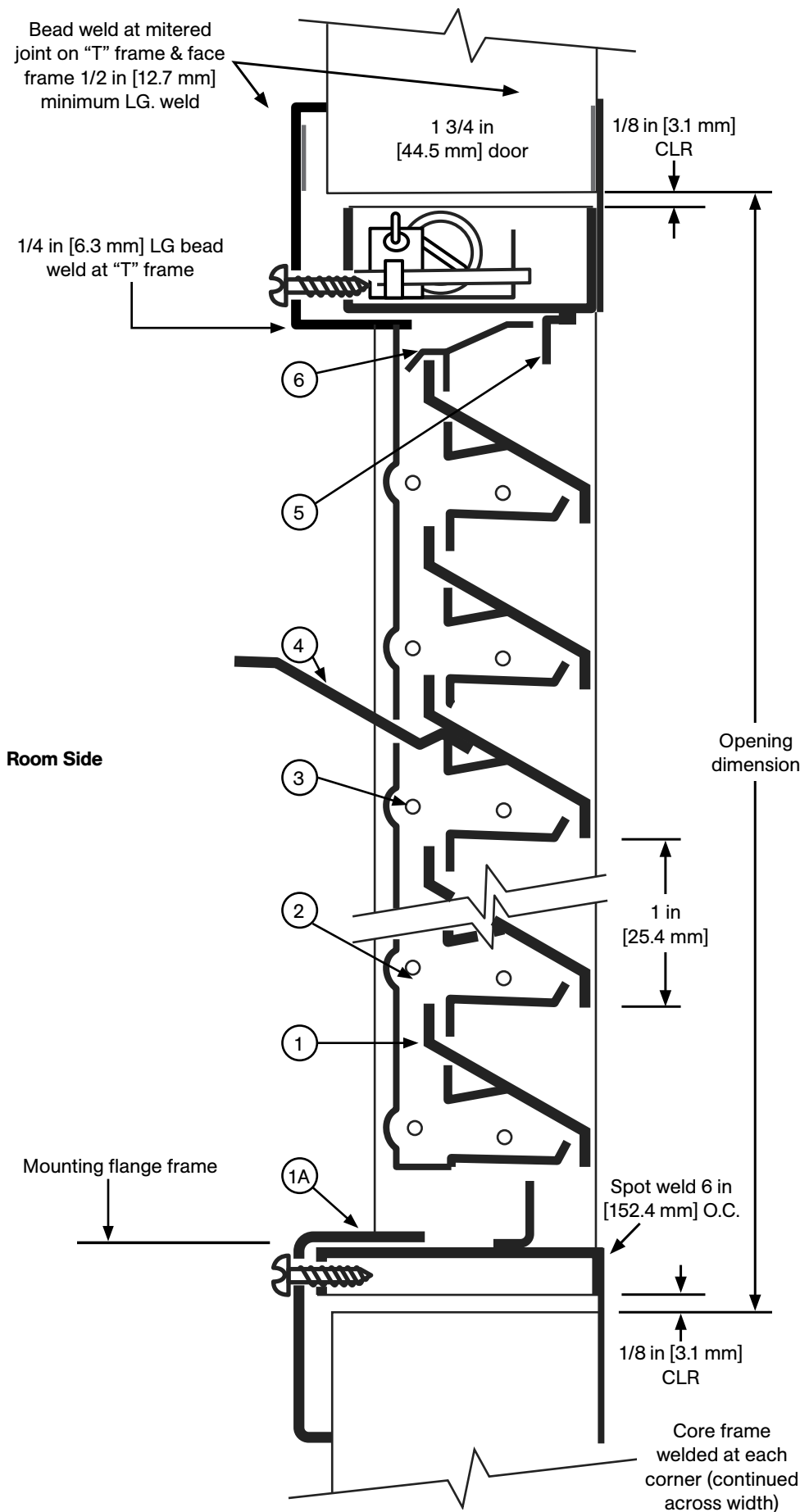
The Model SDL-FP is U.L. and WHI listed for use in fire doors up to 1 1/2 hour rating. Louver size shall not exceed maximum of 576 square inches, 24 in [610 mm] width and 24 in [610 mm] height. The minimum width and height shall not be less than 10 in [254 mm] and 6 in [153 mm], respectively. Louvers may be provided for classified hollow-metal type and composite type fire doors.



KN Crowder

1220 Burloak Drive, Burlington, Ontario, Canada, L7L 6B3
T. 1-866-999-1562 customerservice@kncrowder.com kncrowder.com
© 2020-2022 K.N. Crowder Mfg. Inc. All Rights Reserved.

Vertical Section



Options

Materials

Zinc-Plated for corrosion resistance & exterior use.

Finish

Standard mineral bronze powder coat
Special order colours. Please provide colour chip.

Fasteners

Security fasteners, please specify

Screen

18-14 mesh insect screen installed in roll formed aluminum frame. Aluminum, bronze or fiberglass mesh available.

Size

_____ wide x _____ high
(door cut out size equals order size)
_____ quantity

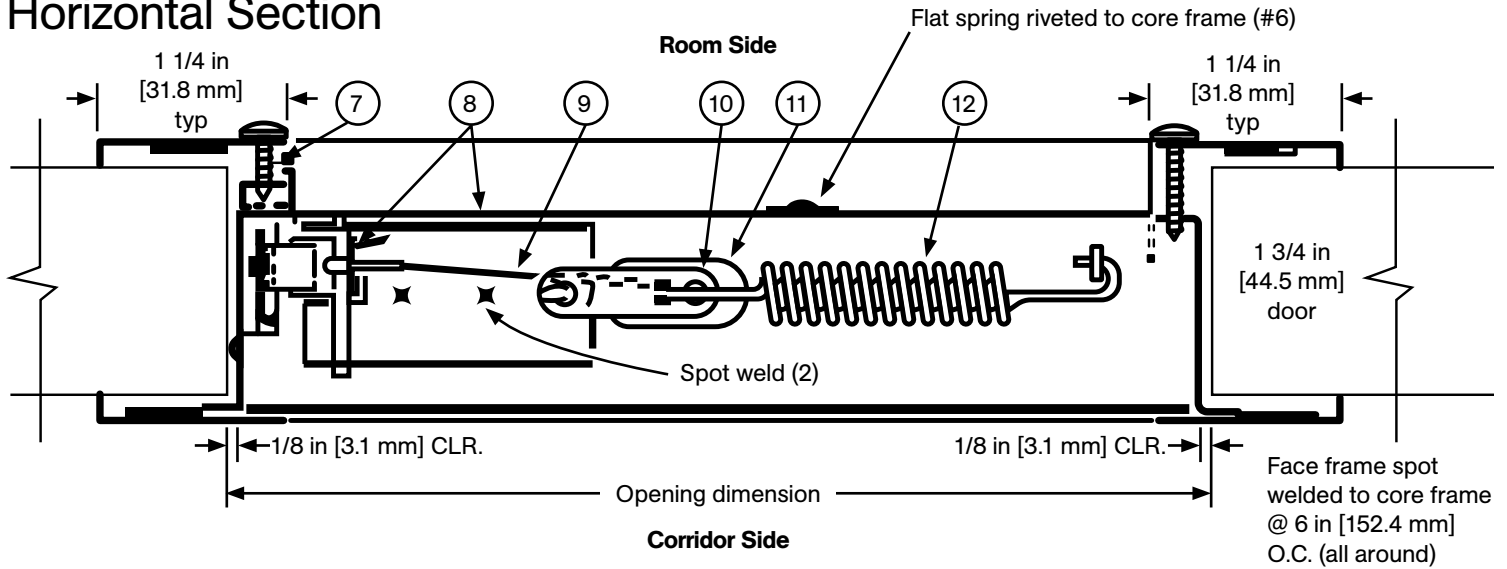
Specifications

- ① Louver blades 16 ga. cold roll steel
- ①A Channel frame & flange - frame 18 ga. cold roll steel
- ② Action bar 3/8" x .050 cold roll steel
- ③ Rivets - cadmium plated (.090" x .21 LG.)
- ④ Adjusting tab - position approximately 1/2 from bottom of unit (spot welded to blade)
- ⑤ Blade stop 5/8" x 3/8" x 18 ga. (.048") cold roll steel angle (spot welded to core frame)
- ⑥ Flat spring - hold blades in open position (riveted to frame)

Installation Instructions

1. Before installing SDL-FP fire door louver into a fire door, be sure that the door cut-out (order size) is accurate.
2. Position one side of SDL-FP in the door cut-out (as it would be installed). SDL-FP requires a single door cut-out only for installation.
3. With the frames in place, screw the mounting screws through the pre-punched holes in the frame on the room side. Screw firmly together.
Note: Use the 1/2 in [12.7 mm] long screws in hole nearest to fusible link.
4. Visually inspect the fusible link to assure that it is unbroken. Do not install if link is not intact. **Paint should not be applied to the fusible link or any of the connecting hardware including the hold-open clip.**

Horizontal Section



Specifications

- 1 Louver blades 16 ga. cold roll steel
- 2 Action bar 3/8" x .050 cold roll steel
- 3 Rivets - cadmium plated (.090" x .21 LG.)
- 7 Mounting screws - #8 phillips head (3 at 3/4" LG. & 1 at 1/2" LG.)
- 8 Rocker arm and closing bar and housing
- 9 "S" hook - .080" cadmium plated steel
- 10 Fusible link - design temp 165°F maximum
- 11 Heat opening - 1/2" x 1"
- 12 Tension spring - 3" LG. x 1/2" ø x .063" thick cadmium plated steel

Partial Front Elevation (closed position)

(Face flange removed for clarity)

