

# TYPE CC-NRW-6MS



## FEATURES

- 150 lbs. [68 kg] weight capacity
- Effortless opening and closing of the door with the Catch 'N' Close Closing System (for doors wider than 18 in [457 mm] to less than 30 in [762 mm])
- Easy Connect Hanger System for easy installation
- Nylon wheels and precision ball bearings provide smooth and quiet door operation
- Crowder Frame pocket door kit including header track, header brackets, steel uprights and foot brackets to build a pocket on site
- Cycle tested for up to 150,000 cycles without fail
- ADA Compliant (Barrier-free) design

## COMPLETE 1 DOOR KIT BREAKDOWN



Each kit includes one CP-406 Header Track x length based on kit size, two CP-HB6MS Header Brackets, two CP-930 Drywall Support x length based on kit size, four Steel Uprights x length based on kit size, two CP-6MS Foot Brackets, two CC-493 Easy Connect Catch 'N' Close Hangers, two CC-100 Catch 'N' Close In-Track Stops, two Catch 'N' Close Closing Devices, one C-914 Guide Channel x length based on kit size, one CP-913 Pocket Guide and necessary fasteners.

**CC-75** for doors up to 75 lbs. [34 kg]  
**CC-1** for doors up to 150 lbs. [68 kg]

### Door Width

18 in [457 mm] to 30 in [762 mm] wide

### Door Height

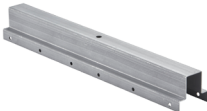
80 in [2032 mm] to 84 in [2134 mm]  
or 2150 mm high  
92 in [2337 mm] to 96 in [2438 mm]  
or 2455 mm high  
116 in [2947 mm] to 120 in [3048 mm]

## OPTIONAL

### Door Locks & Pulls



### Add-On Products



#### CPD-6MS-Joiner Kit

Use for applications where double bi-parting door openings are required. Two single Crowder Frame kits are required in order to use the joiner kit.

Customer Name

Job No./Name

Date

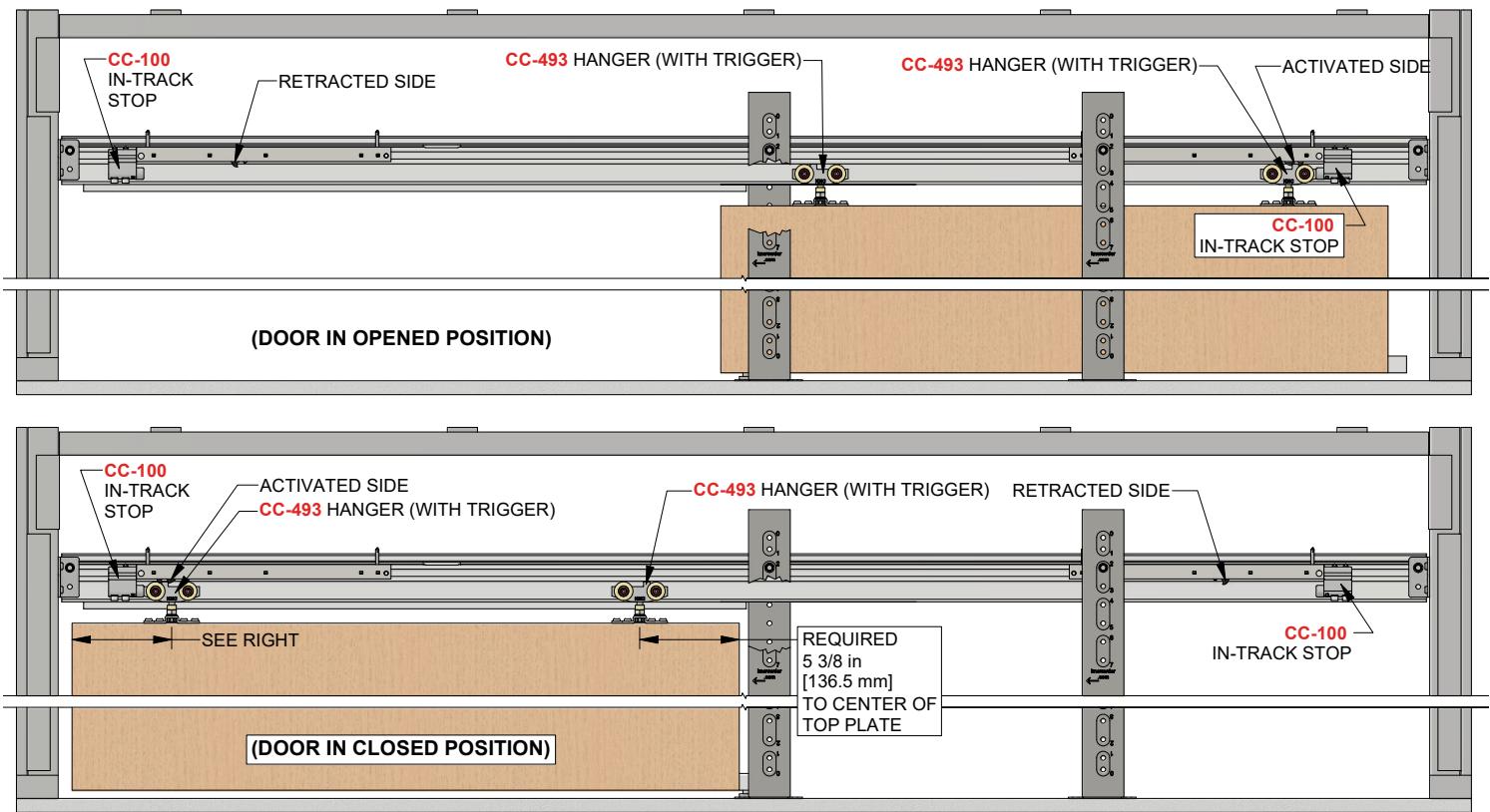
Provided By

Notes

# TYPE CC-NRW-6MS



## COMPLETE ELEVATION VIEW



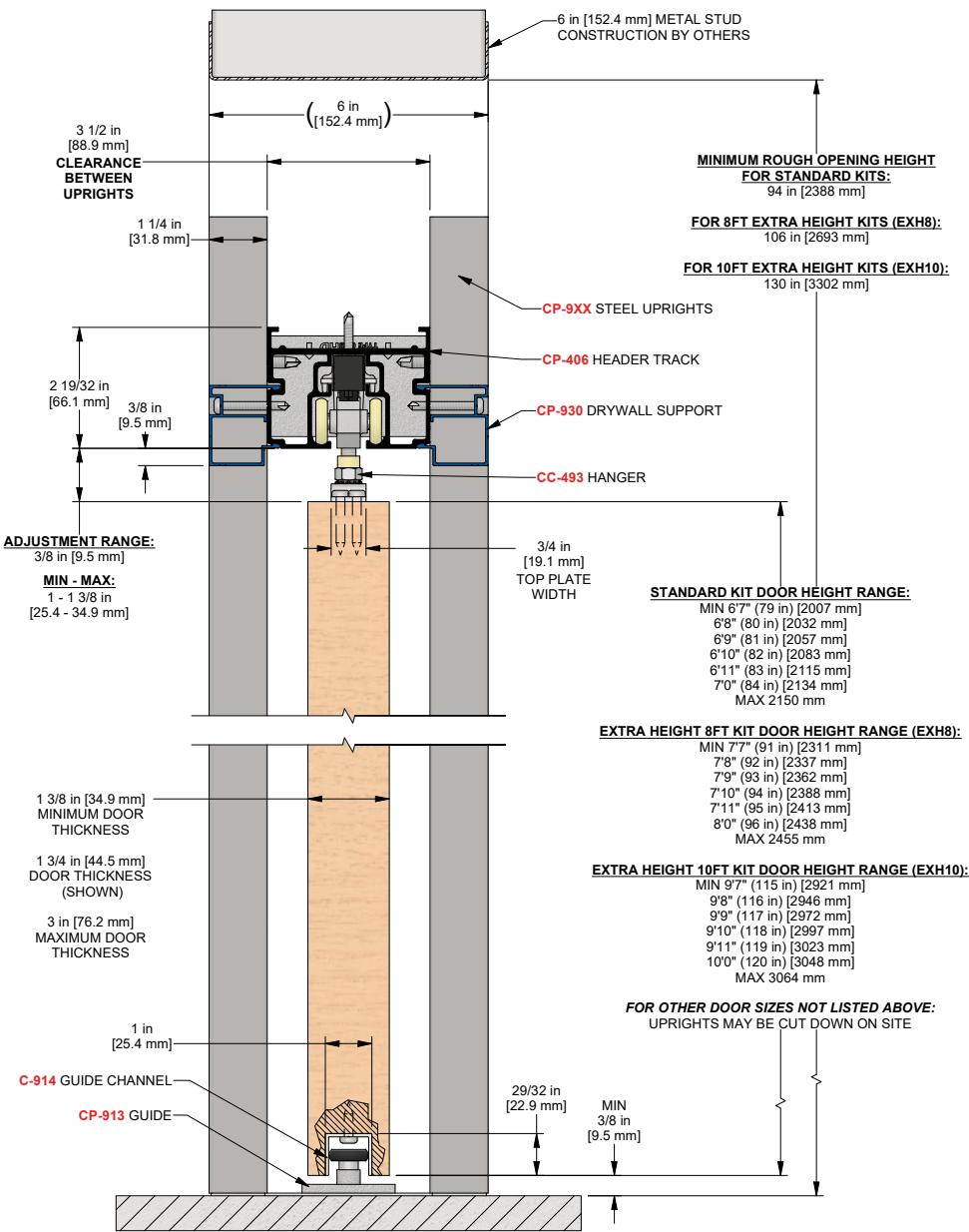
Customer Name	Job No./Name	Date	Provided By
_____	_____	_____	_____

Notes

# TYPE CC-NRW-6MS



## PRODUCT DIMENSIONS



Installation  
Instructions



Customer Name	Job No./Name	Date	Provided By

### Notes